

BX3 Side by Side Street Legal Kit Instructions. **V3**

KA2-INS

Kit # KA2-SLK-S

Kawasaki KRX1000 2019-up

Thank you for purchasing our product.

Please read all of the instructions before proceeding. This is a very easy kit to install for someone with mechanical skills. No special tools required. Inspect all parts for damage. Parts are packaged in smaller bags. Leave them packaged for now. **NOTE: MARKINGS FOR "RIGHT"= PASSENGER SIDE, "LEFT"= DRIVERS SIDE**

Warning: Disconnect battery cables before continuing

Warning: Do not connect other accessories to the street legal kit wiring. Damage can occur and the warranty will be void.

Recommended tools needed

Drill and drill bit set, screw drivers, small metric socket set or nut drivers, side cut pliers.

Start by removing covers

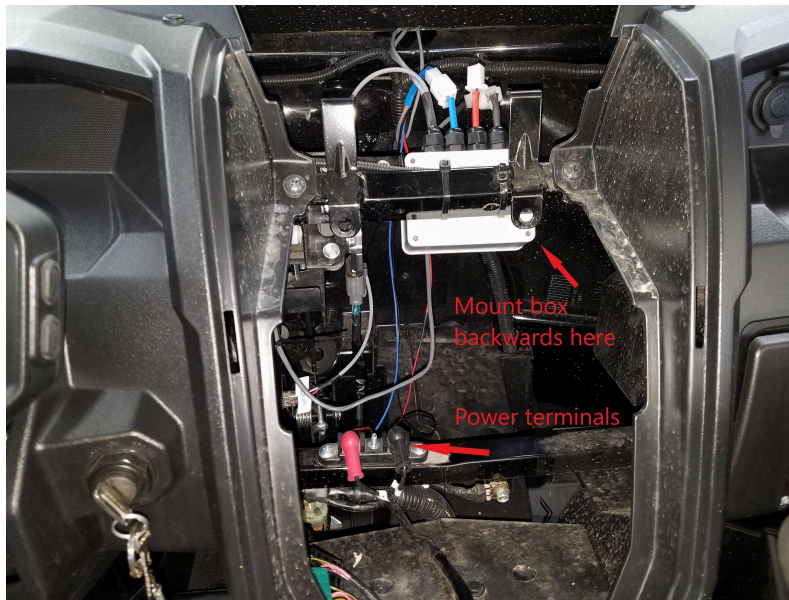
Remove the hood. Remove the center console. Remove the tunnel cover(s).



Control box mounting

Install the control box UNI-CBXv3 using two of the large cable ties, fasten it to the square bar backwards as shown.

Note: The control box may differ from the control box pictured.



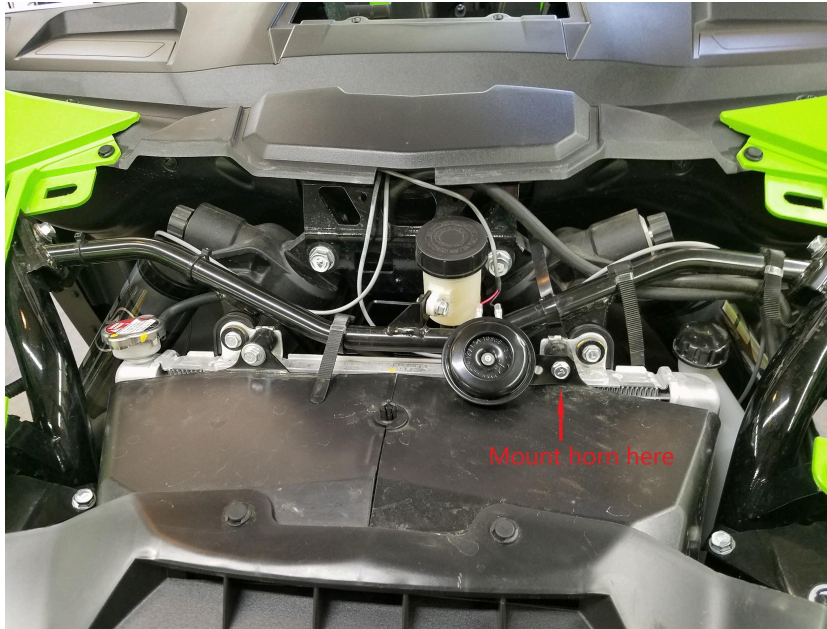
Front signal mounting and wiring

Plug in the cable with green heat shrink. Route the cables labeled "Right front signal" and "Left front signal" through the firewall. Locate a suitable place to mount the front signal lights. They should be able to be seen from the front and sides if possible. **Making sure the cables come out toward the grill**, drill a $\frac{3}{8}$ " hole for the cables. Mount with the double sided tape **AND** the small screws using a $\frac{1}{16}$ " drill bit. Carefully route the wires to the cables marked "Right front signal & Left front signal" and connect the small plugs.



Horn

Connect the cable with the blue heat shrink to the plug marked with blue heat shrink on the control box. **Wait until last to connect the red and black wires marked "ACC power"**. Install the horn (UNI-HNK) by mounting it under the hood using a mounting screw for the radiator shroud. Route and plug in the wires marked "Horn".



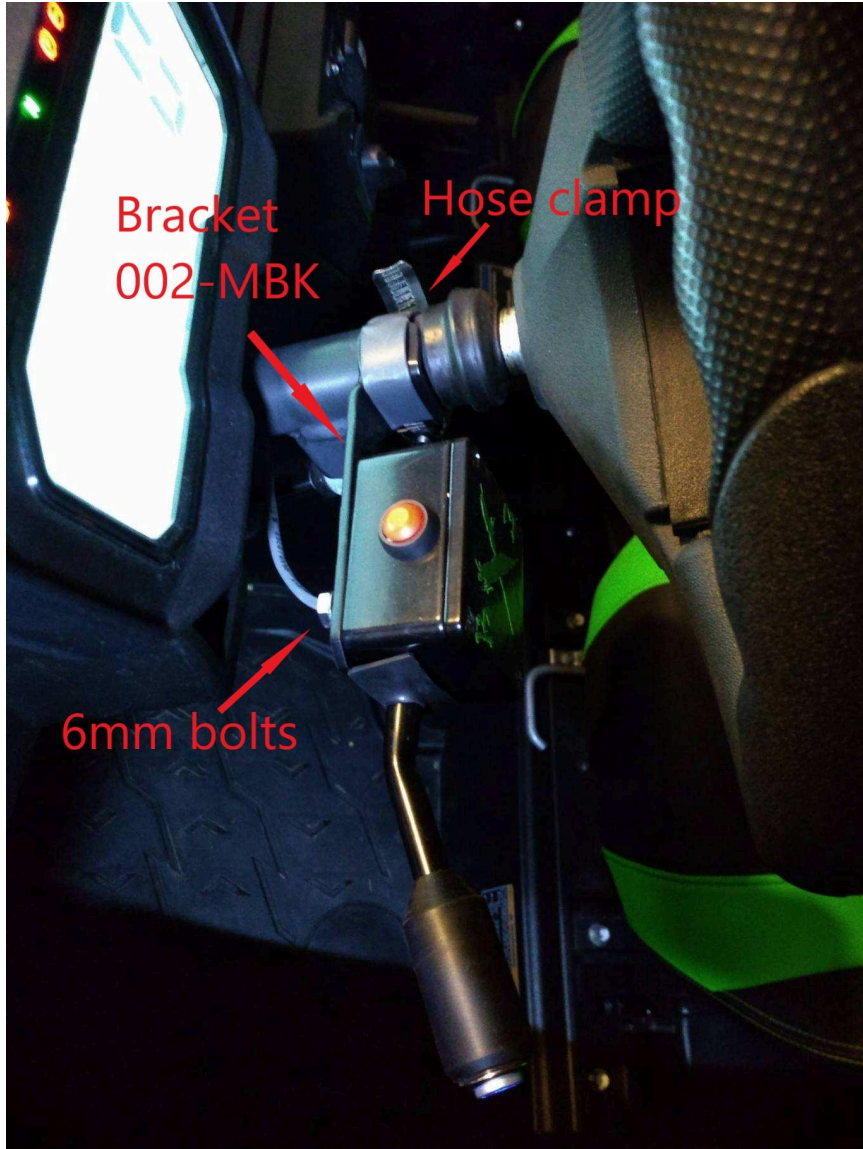
Dash indicator LED lights

Locate a suitable area on the dashboard for the dash indicator LED's UNI-INK. Make sure the wires reach. Drill two 5/16" holes and route the wires through. Pushing on the black trim, CAREFULLY push the indicators in. Plug the wires into the cable marked "Left indicator" and "Right indicator" black-black on both indicators, red-red on left red-white on right.



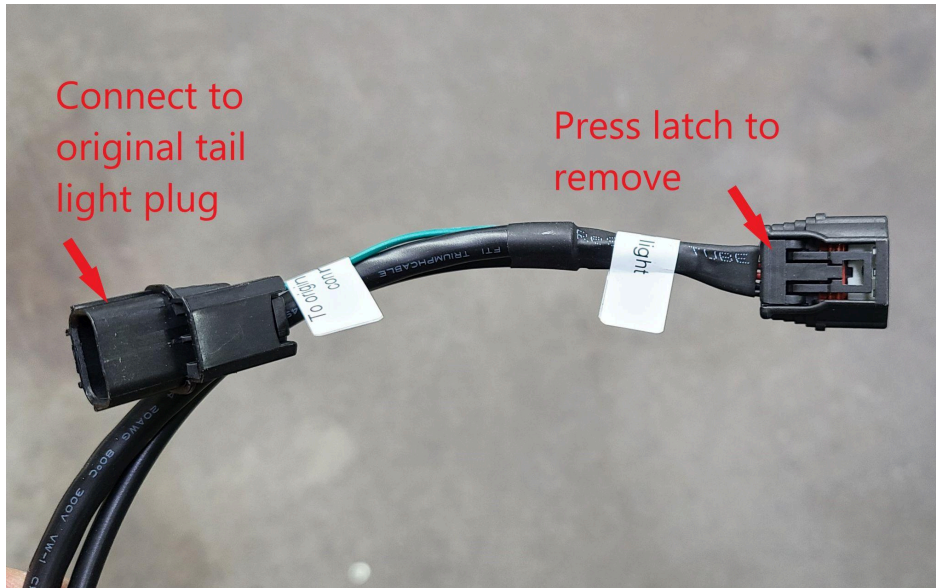
Turn signal switch mounting and wiring

Mount the turn signal switch UNI-TSS to the mounting bracket 002-MBK using the 6mm bolts and star washers. Use the hose clamp to mount it to the steering column. Make sure the steering tilt handle is still accessible. Route the cable along the steering column to the control box and plug it into the plug marked with black heat shrink. Make sure the tilt mechanism does not pinch the cable.



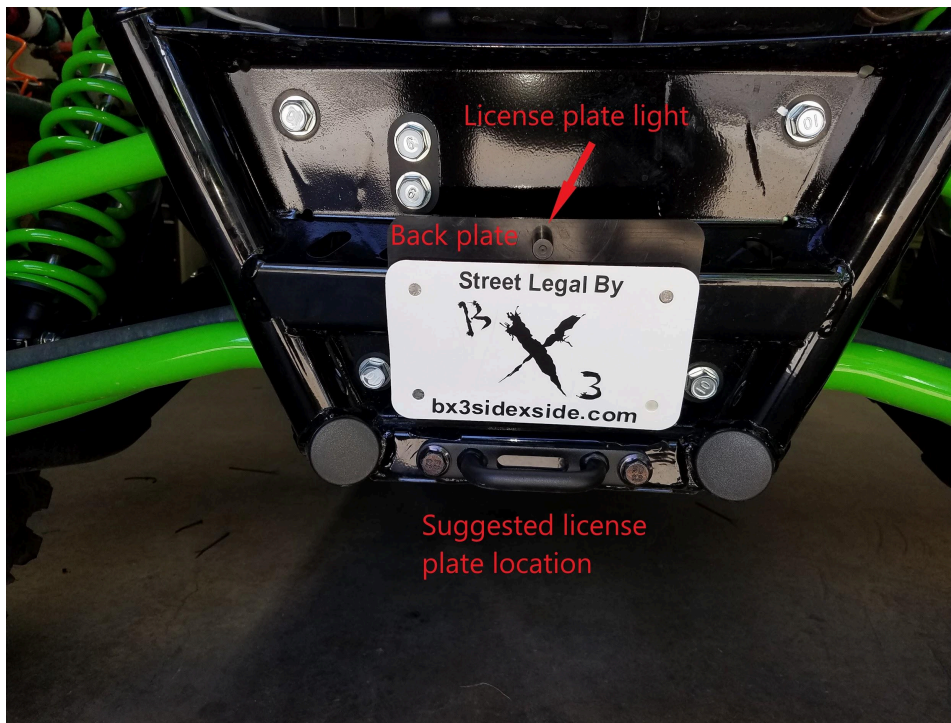
Rear tail/brake lights

Starting from the rear of the tunnel on the left side, route the cable with red heat shrink along the existing wire harness toward the front to the control box and connect it to the plug with red heat shrink. At the rear of the machine route the cable to the left tail light then across the rear to the right tail light following the existing wire harnesses. Press the latch on the tail light plugs to remove the OEM cable. Connect the new BX3 cable to the tail lights. On the left side, connect the plug marked "To original tail light connector" back to the original cable.



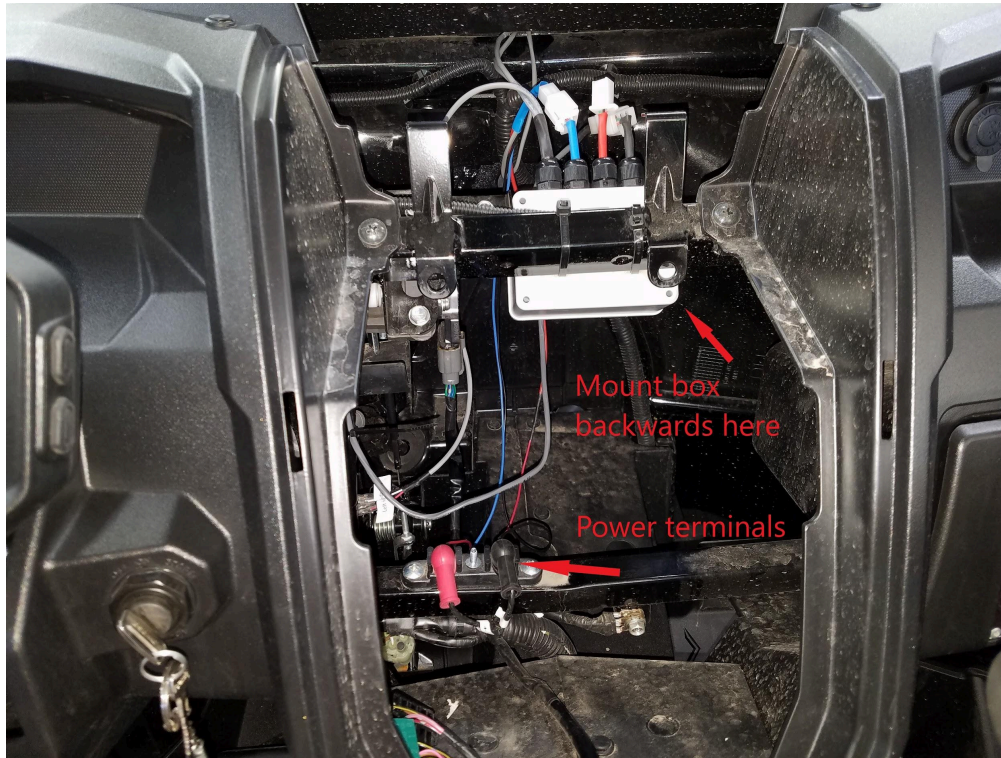
License plate light and back plate

Find a suitable location for the license plate UNI-LPK and use the back plate as a template to drill two 1/4" holes. Mount the license plate light on the back plate. (Caution: Do not over tighten license plate light nut). Route the cable from the left tail light marked "License plate light" to the light and connect black-black, red-red.



Accessory power hook up

Now you can route and attach the “ACC power” wires to the accessory power terminals. The red wire marked “ACC power” connects to the red (+) terminal, the black wire marked “ACC power” connects to the black (-) terminal. **The control box may be different than the one pictured.**



Use cable ties to secure all cables and connector plugs.

Operation

This is an electronically controlled kit.

The operation of the street legal kit is similar to your car but with some differences:

- 1- The lighted horn button is on the end of the turn signal switch handle.
- 2- The emergency flasher button is “push on-push off”.
- 3- If you accidentally leave the turn signal on left or right for more than 30 seconds it self cancels. If the brake pedal is held (at an intersection for example) it will not cancel. It will cancel 30 seconds after the brake pedal is released.
- 4- When the brakes are applied the brake lights will strobe rapidly then stay on.

Caution:

Always move the turn signal switch to the center position when washing to avoid water in the switch box.
Do not power wash any of the street legal kit components.

Warranty

BX3 Side X Side guarantees all of its street legal kits for a period of 1 year after purchase date. This warranty covers parts only caused by manufacturer defects. BX3 Side X Side will repair or replace defective parts with new or refurbished parts. Only installations done by BX3 Side X Side are covered under this warranty. This warranty includes ground shipping of replacement parts to the customer. The defective part(s) must be shipped to BX3 Side X Side for inspection before new or refurbished replacement parts will be shipped to the customer.



- UNI-LPK: Universal license plate kit: 1- bolt light w/1/8" male spade, 1- back plate, 2- 6mm x 16mm hex bolts, 4- 6mm flat washer, 2- 6mm nut, 2- 6mm lock washer, 2- #12 x 3/4" sheet metal screws
- UNI-FLC: Front signal/indicator cable assembly
- KA2-RLC: Rear light cable assembly
- KA2-PHC: Power/horn/brake cable assembly
- UNI-CBXv3: Control box assembly
- UNI-TSS: Universal turn signal switch assembly
- UNI-SSL: Standard flowing front lights
- 20- 8" cable ties
- UNI-HNK: Universal horn kit: 1- horn
- 002-MBK: 1- Mounting bracket, 2- 6mm x 12mm hex, 2- 6mm star washer 1- #24 hose clamp
- UNI-INK: Universal indicator kit: 2- green LEDs
- KA2-INS: Instructions

KEEP THIS PAGE FOR YOUR RECORDS. DATE OF PURCHASE _____