

BX3 Side by Side Street Legal Kit Instructions. v3 PO3-INS

Kit # PO3-SLK-S, PO3-SLK-H, PO3-SLK-A, PO3-SLK-F

2020-2024 Polaris

RZR Pro XP, Pro R, Turbo R. 2025+ Polaris RZR Pro XP, Pro R, Pro S

Thank you for purchasing our product.

Please read all of the instructions before proceeding. No special tools required. Inspect all parts for damage. Parts are packaged in smaller bags. Leave them packaged for now. **NOTE: MARKINGS FOR "RIGHT"= PASSENGER SIDE, "LEFT"= DRIVERS SIDE**

Recommended tools needed

Drill and drill bit set, screw drivers, small metric socket set or nut drivers, side cut pliers, Torx driver set.

Warning: Disconnect battery cables before continuing

Warning: Do not connect other accessories to the street legal kit wiring. Damage can occur and the warranty will be void.

Start by removing covers

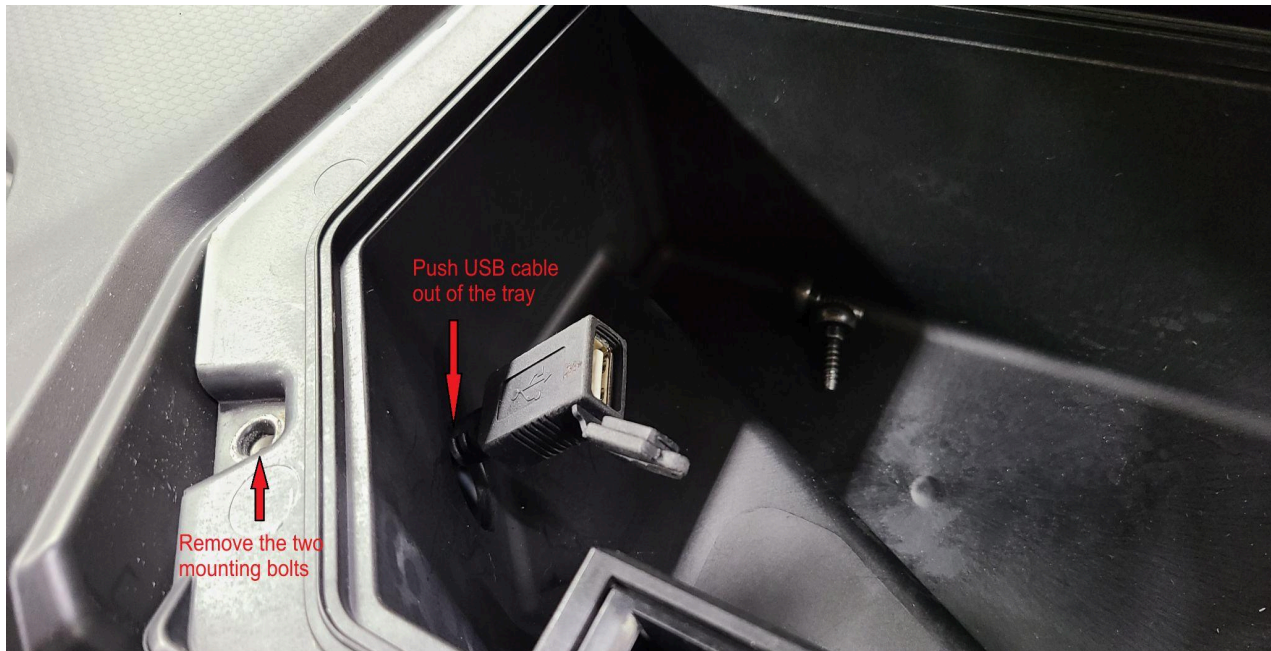
Remove the hood. Remove the upper dash storage tray. Remove the seats. Remove the tunnel (cup holder) cover(s) using the Torx driver and a small screwdriver for the push clips.

Control box mounting

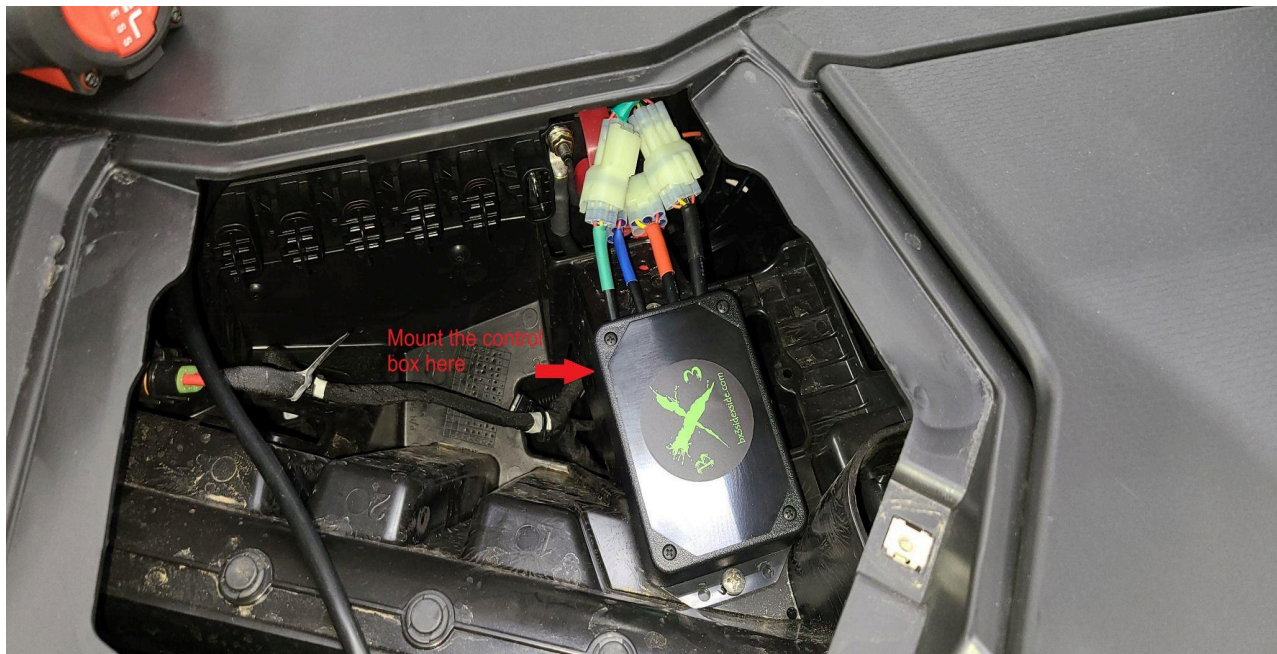
2020-2024



Remove the storage tray and lid. 2025+



Install the control box labeled UNI-CBXv3 under the upper dash storage tray using an 1/8" drill bit and the screws provided.



Front signal mounting and wiring 2020-2024

Connect the cable with green heat shrink to the control box plug with green heat shrink. Route the 2 cables labeled "Right front signal" and "Left front signal" through the lower grommet on the firewall towards their respective sides. Locate a suitable place to mount the front signal lights UNI-SSL. **Making sure the cables come out toward the grill**, drill a $\frac{3}{8}$ " hole for the cables. Mount with the double sided tape AND the small screws using a $\frac{5}{64}$ " drill bit. These wires are fragile. Carefully route the wires to the cables marked "Right front signal & Left front signal" and connect the small plugs.



Optional replacement headlights or accent lights with turn signals 2020-2024.

Unplug the original headlights or accent light and remove them. Install the new headlights or accent light. Plug in the original plug. Route the 2 cables labeled "Right front signal" and "Left front signal" towards their respective sides. Connect the small plugs.



Front signal mounting and wiring 2025+

Connect the cable with green heat shrink to the control box plug with green heat shrink. Route the 2 cables labeled "Right front signal" and "Left front signal" through the lower grommet on the firewall towards their respective sides. Locate a suitable place to mount the front signal lights UNI-SSL. **Making sure the cables come out toward the grill**, drill a $\frac{3}{8}$ " hole for the cables. Mount with the double sided tape AND the small screws using a $\frac{5}{64}$ " drill bit. These wires are fragile. Carefully route the wires to the cables marked "Right front signal & Left front signal" and connect the small plugs.



Optional replacement Fang lights with turn signals 2025+.

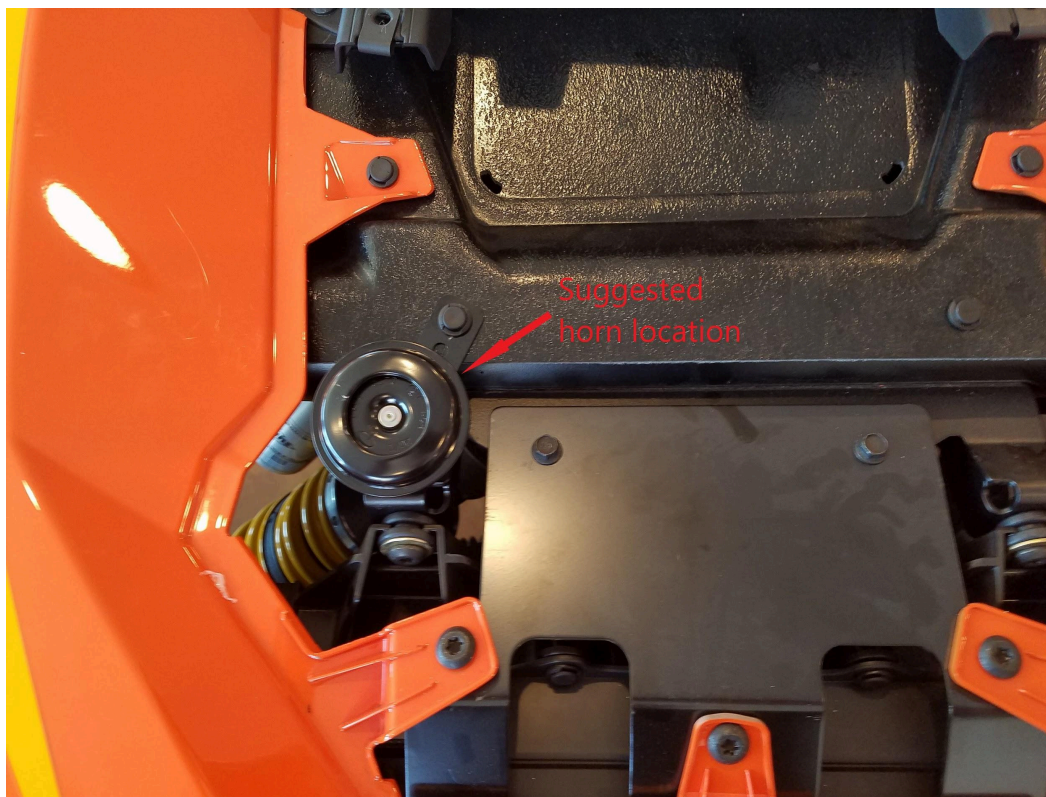


Remove the original fang lights and unplug them. Cut a slot about 1- $\frac{1}{4}$ " x $\frac{3}{4}$ " as shown below. Install the new fang lights using the existing nuts. Route the 2 cables labeled "Right front signal" and "Left front signal" to their respective sides. Connect the small plugs.



Horn

Connect the cable with the blue heat shrink to the plug marked with blue heat shrink on the control box. **Wait until last to connect the cable marked "ACC power"**. Mount the horn under the hood as shown. Plug in the wires marked "Horn". 2020-2024



2025+



Built in indicators on instrument cluster/speedometer

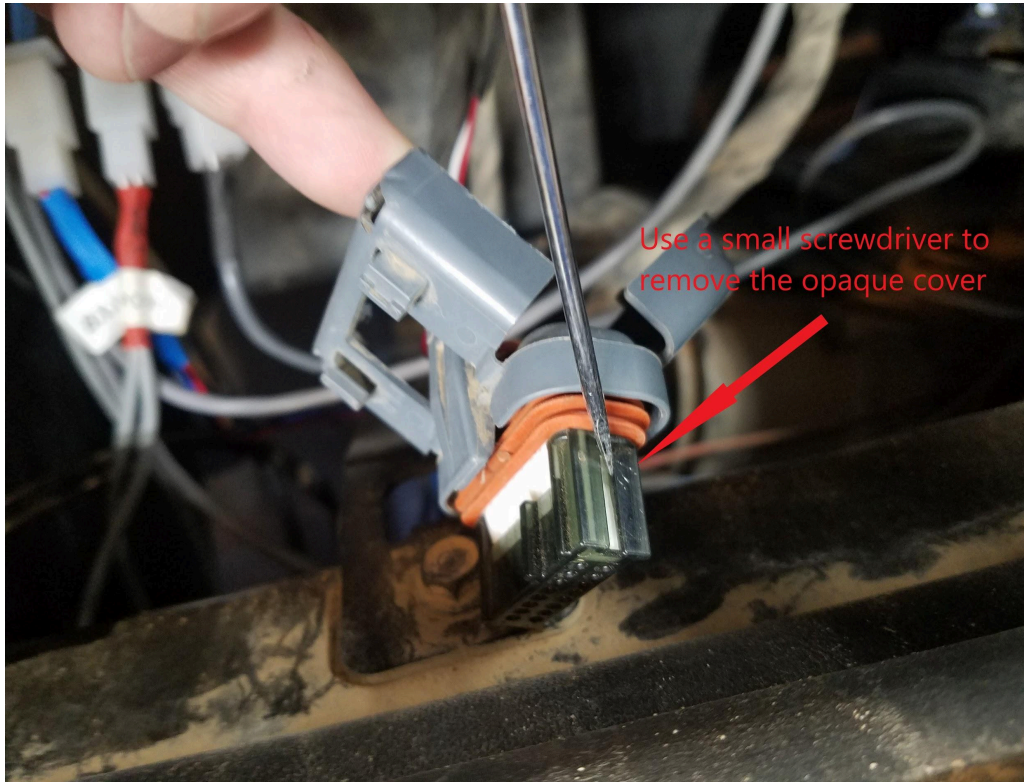
Tilt the steering wheel all the way down. 2025+ Remove the cover. See below.



Press latch on the bottom to carefully unplug the large plug from the back of the speedometer.

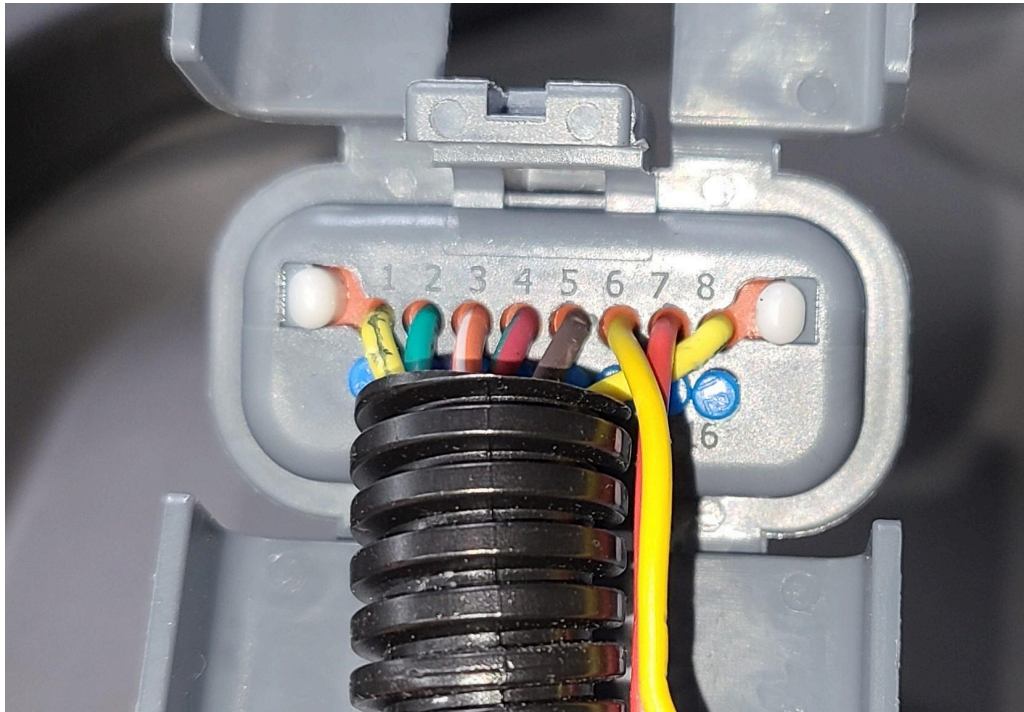


Open the back with a small screwdriver as shown. Remove the opaque cover.



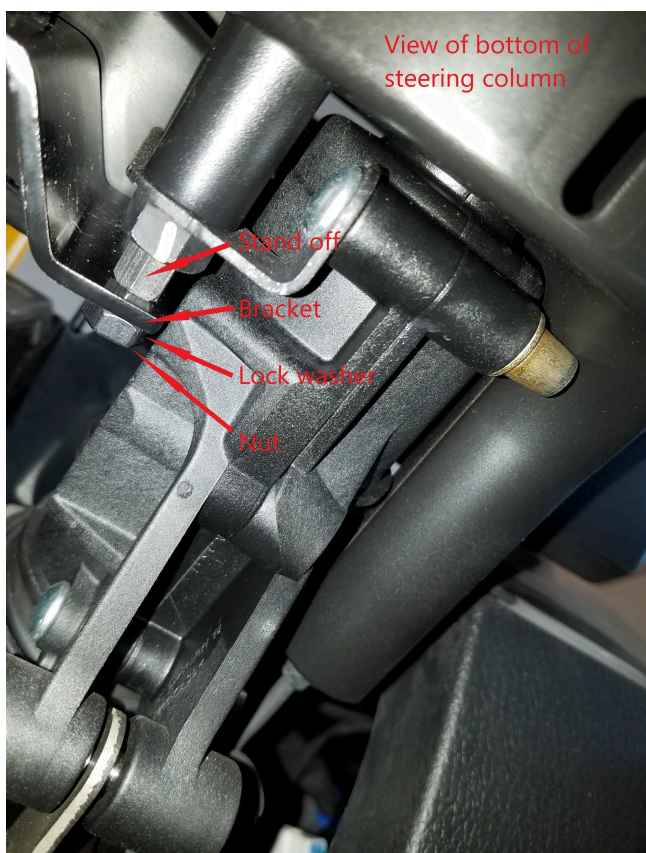
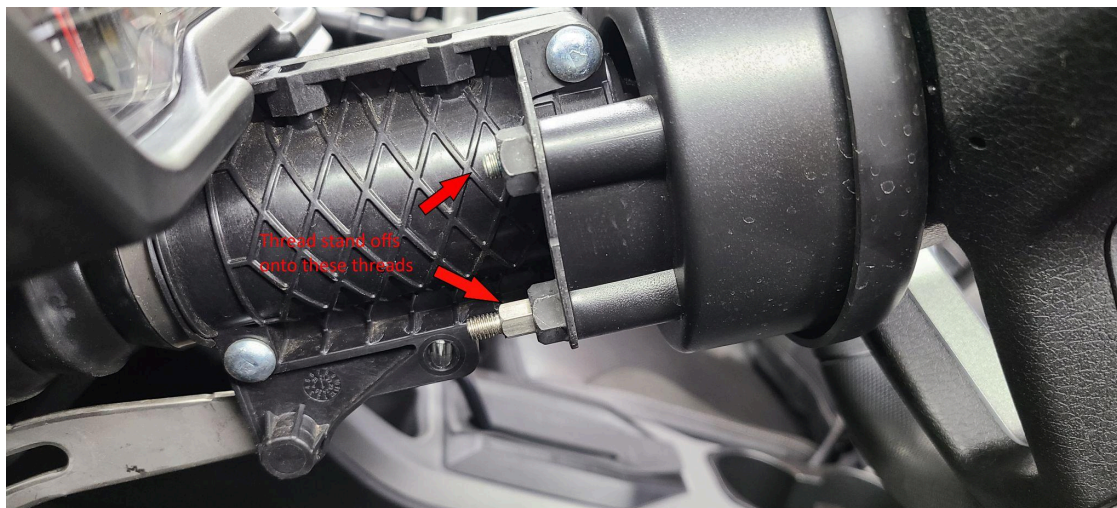
Remove the blue seal plugs from holes 6 & 7

Install the cable marked POA-CIC by inserting the yellow wire in hole 6 and the red wire in hole 7. Replace the opaque cover and close the back. Route the wires to the cable marked "Right and Left dash indicators". Connect color to color. Black is not used.



Turn signal switch mounting and wiring

Mount the turn signal switch UNI-TSSv2 to the mounting bracket 106-MBK using the 5mm hex bolts. (1) With steering wheel controls: Thread the stand off bolts onto the existing bolt ends as shown. Install the bracket with the lock washers and nuts. (2) Without steering controls: Use the stand off bolts and lock washers to mount the bracket to the rear of the existing steering wheel control mount. Leave enough slack in the cable for the steering wheel to telescope in and out. (3) For Sport models use the bracket with hose clamp marked 102-MBK. Route the cable to the control box and plug it into the plug marked with black heat shrink. Make sure the tilt mechanism does not pinch the cable. Some Premium and all Ultimate models below

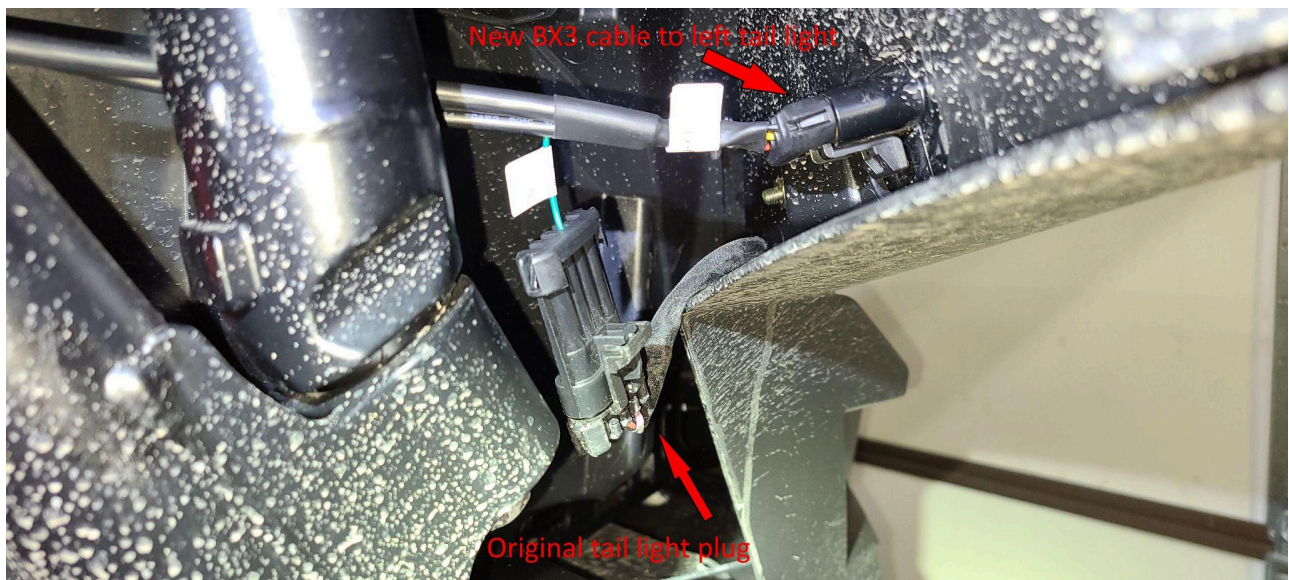


Sport models: Use 102-MBK bracket and mount with the hose clamp. (Picture not exact)



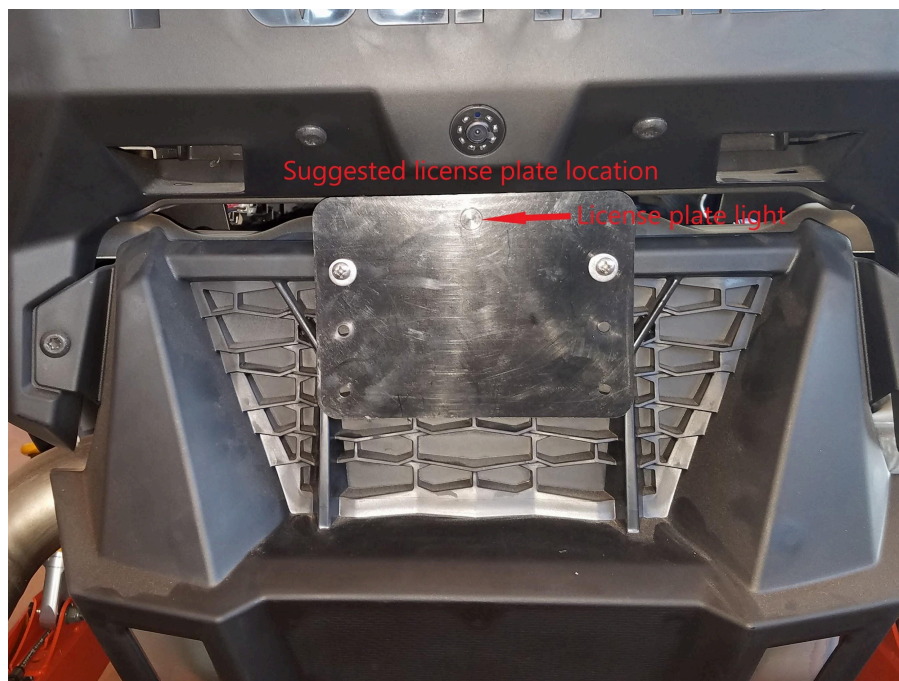
Rear signal lights

Starting from the rear of the tunnel, on the left side, route the cable with red heat shrink along the existing wiring toward the front to the control box and connect it to the plug with red heat shrink. At the rear of the machine, route the cable on the left side to the left tail light. Unplug the plug from the left tail light and plug in the BX3 plug marked "Left tail light". Plug the plug with the single wire into the original left tail light harness. Route the "Right tail light" cable across the rear to the right tail light and repeat. Tape and abandon the original harness plug.



License plate light and back plate for Pro XP, Pro S, Turbo R

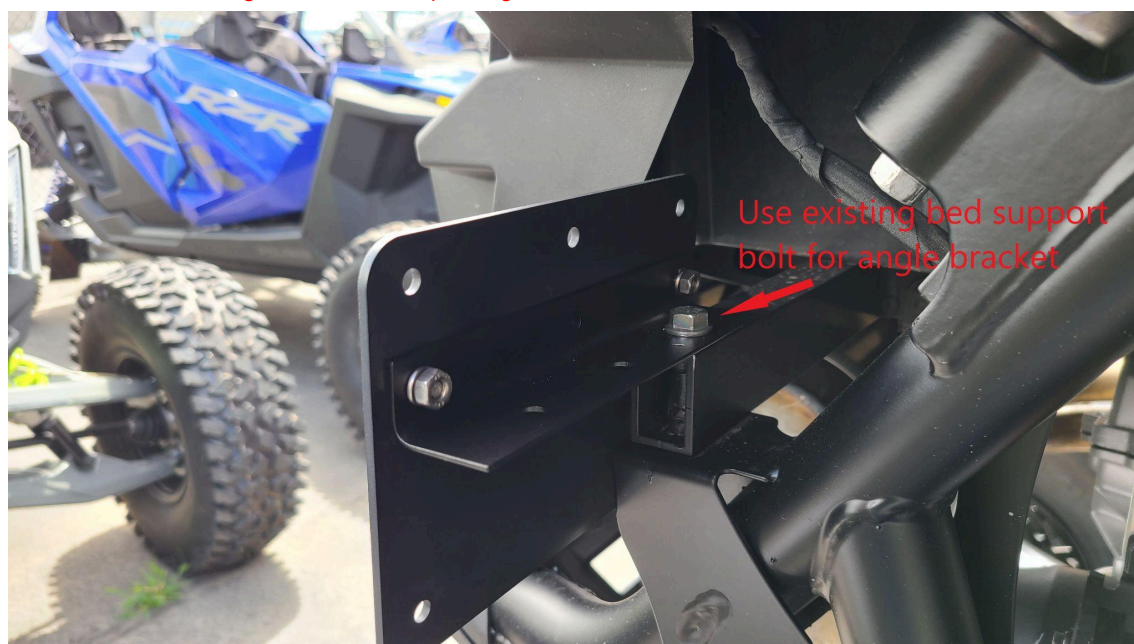
Find a suitable location for the license plate UNI-LPK and use the black plate as a template to drill two $\frac{1}{8}$ " holes for the sheet metal screws. Mount the license plate light so that it lights the plate. **Caution: Do not over tighten the license plate light nut.** Route the cable from the tail light marked "License plate light" to the light and connect black-black, red-red. Use cable ties to keep wires away from the hot exhaust.



License plate angle bracket UNI-LPA for Pro R

Remove the right side bed support bolt and install the UNI-LPA bracket. Reinstall the bolt. Attach the license plate back plate to the angle bracket using the supplied hardware. Install the license plate light in the top center hole.

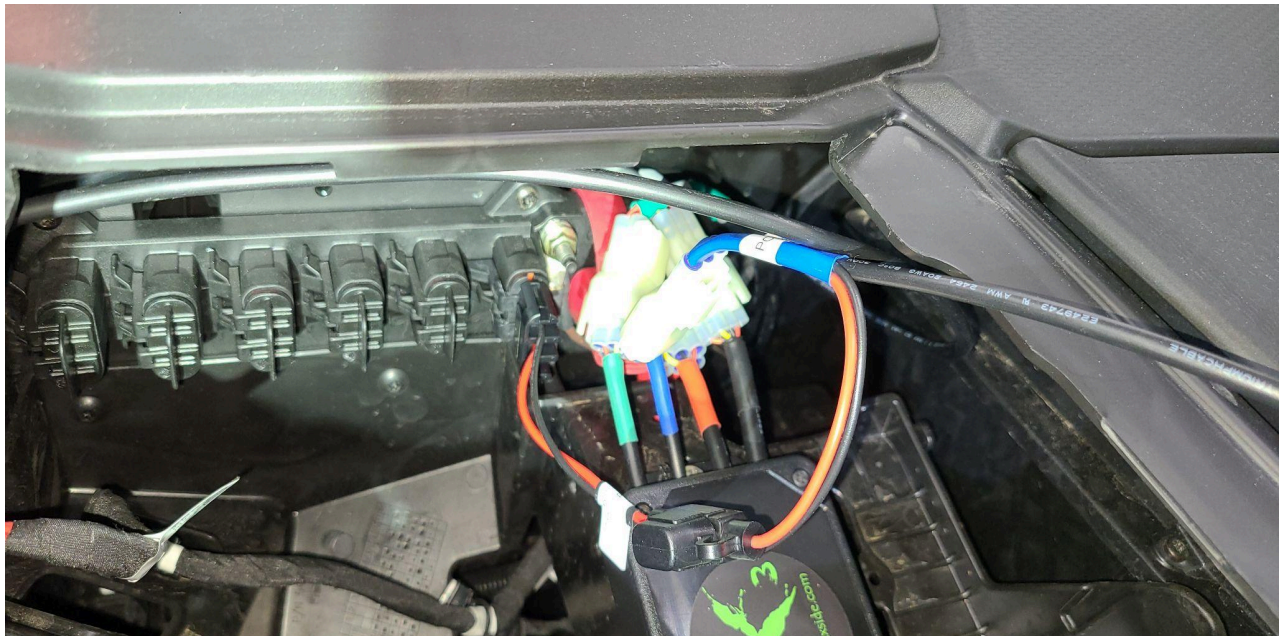
Caution: Do not over tighten the license plate light nut.





Accessory power hook up

Plug in the ACC power to a Pulse Power plug as shown below.



Use cable ties to secure all cables and connector plugs.

Operation

This is an electronically controlled kit.

The operation of the street legal kit is similar to your car but with some differences:

- 1- The lighted horn button is on the end of the turn signal switch handle.
- 2- The red emergency flasher button is "push on-push off".
- 3- If you accidentally leave the turn signal on left or right for more than 30 seconds it self cancels. If the brake pedal is held (at an intersection for example) it will not cancel. It will cancel 30 seconds after the brake pedal is released.
- 4- When the brakes are applied the brake lights will strobe rapidly then stay on.

Caution: Always move the turn signal switch to the center position when washing to avoid water in the switch box.
Do not power wash any of the street legal kit components.

Warranty

BX3 Side X Side guarantees all of its street legal kits for a period of 1 year after purchase date. This warranty covers parts only caused by manufacturer defects. BX3 Side X Side will repair or replace defective parts with new or refurbished parts. Only installations done by BX3 Side X Side are covered under this warranty. This warranty includes ground shipping of replacement parts to the customer. The defective part(s) must be shipped to BX3 Side X Side for inspection before new or refurbished replacement parts will be shipped to the customer.



- ☐ UNI-LPK: Universal license plate kit: 1- bolt light w/1/8" male spade, 1- back plate, 2- 6mm x 16mm hex bolts, 4- 6mm flat washer, 2- 6mm nut, 2- 6mm lock washer, 2- #12 sheet metal screws
- ☐ UNI-LPA: License plate angle bracket: 4- 6mm x 16mm hex bolts, 4- 6mm nuts, 4- 6mm lock washers, 4- 6mm flat washers
- ☐ UNI-FLC: Front signal/indicator cable assembly
- ☐ PO3-RLC: Rear light cable assembly
- ☐ PO3-PHC: Power/horn cable assembly
- ☐ UNI-CBXv3: Universal control box assembly
- ☐ UNI-TSSv2: Universal turn signal switch assembly
- ☐ UNI-SSL: Standard signal lights
- ☐ PO3-HSL: Optional replacement signal headlights (2020-2024)
- ☐ PO3-ASL: Optional replacement accent signal light (2020-2024)
- ☐ POU-FSL: Optional replacement Fang signal lights (2025+ only)
- ☐ 20- 8" cable ties
- ☐ Universal horn: 1- horn
- ☐ 106-MBK: Premium, Ultimate models: 1- Mounting bracket, 2- 5mm flange nuts, 4- 6mm star washer, 2- 6 x 8 x 8mm standoff, 2- 6mm nuts.
- ☐ 102-MBK: Sport model: 1- #24 hose clamp
- ☐ POA-CIC: 1- Cluster indicator cable assembly
- ☐ PO3-INS: 1- Instructions

KEEP THIS PAGE FOR YOUR RECORDS.

DATE OF PURCHASE _____