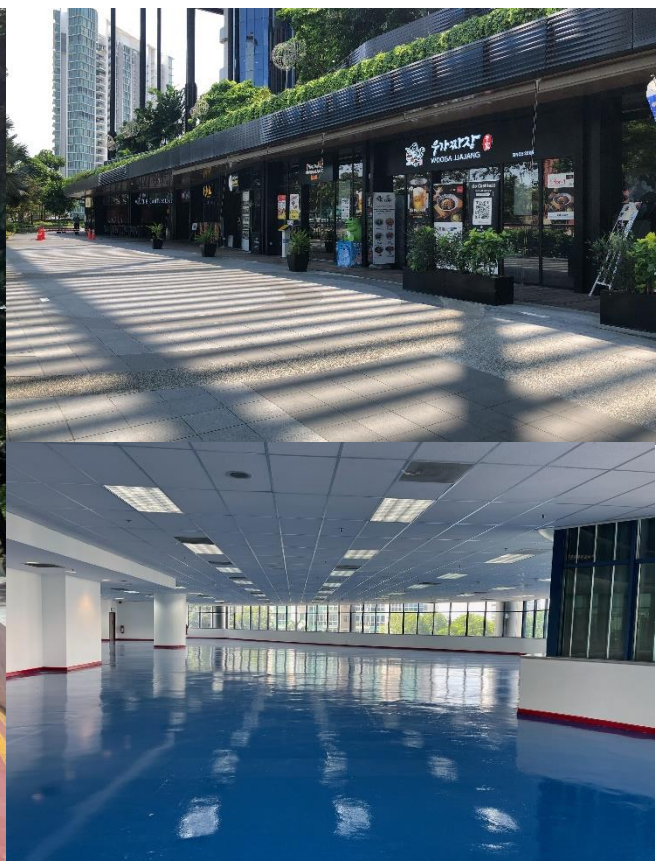
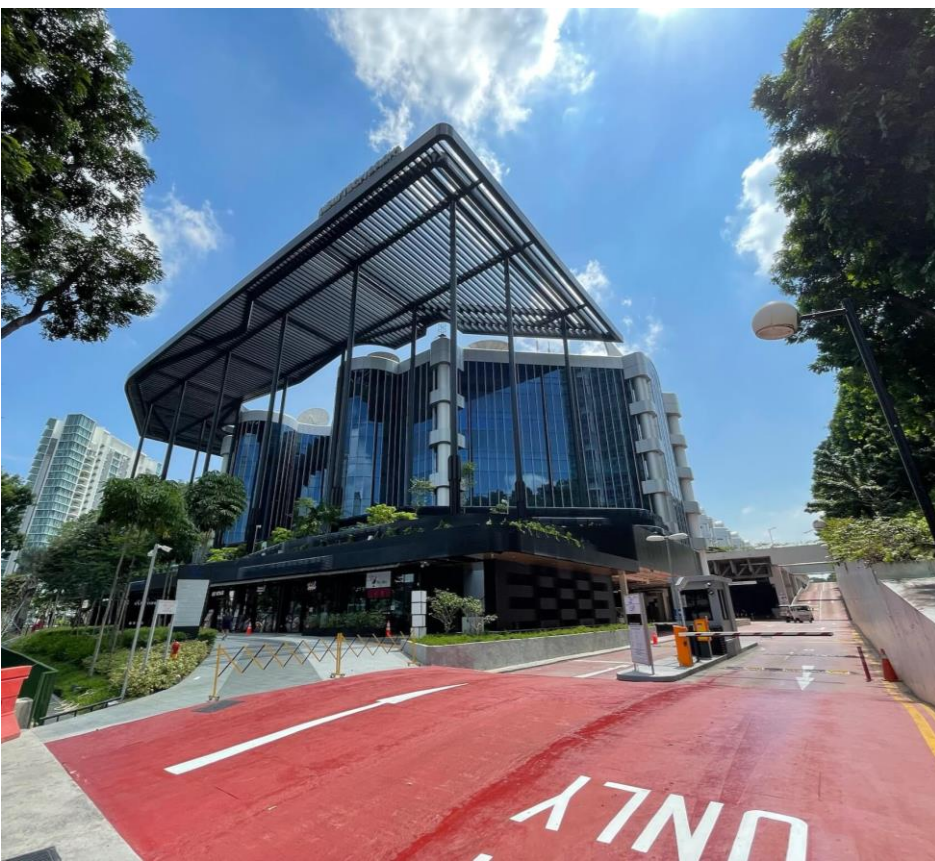


Prime Office with Outstanding Features



- Good corporate image with excellent layout
- Well tenanted by MNCs
- Lobby A to H
- New Lobby and Passenger Lift
- Direct access to cargo lifts
- 24/7 Access
- Regular and efficient floor plate
- Fully air-conditioned
- 1 min walk to Lorong Chuan MRT
- Well connected via CTE/PIE/KPE
- Childcare facility available
- Upgraded tennis courts for tenants

- New lifestyle mall with array of F&B
- Options, supermarket, gym and foodcourt
- Brand new 600+ seating capacity
- auditorium available for tenants booking
- With so many fantastic amenities, transportation links and convenient options..

Unit Size Available

Sizes	7,000/ 8,000/10,000 /20,000 sqft
Indicative Rental	\$4.00 psf

Corporate Visions Pte Ltd Estate Agent Licence No L3008887C Tel : 65 6733 2911 Fax : 65 6733 6786 <https://corporatevisions.sg>

The information contained hereby is subject to change and cannot form part of an offer or contract. While every reasonable care has been taken in providing this information, the owner or its agent cannot be held responsible for any damage or loss suffered as a result of any inaccuracies in this documents. All interested parties shall make enquiries to satisfy themselves of any the information. Copyright@2012 .All rights reserved

Estate Agent License No
L3008887C

Moving Ahead With
Corporate Visions