



2026

HORSE

SHOW



SERIES

**CANTER DOWN
FARMS**

Canter Down Farms is elated to announce the continuation of the Hunter portion of their show series at a new facility for the 2026 season. Many are familiar with this facility in

New Smyrna Beach, FL ...

Silver Sands Bridle Club located at **625 Tomoka Farms Road (C.R.415).**



HorseSpot.net is the go to website for entries, live results, and show info.

 www.canterdownfarms.com

 cdfentries@yahoo.com

HORSE SPOT

Canter Down Farms 2026 Spring Fling

Apr 26th 2026

Online Entries, Daily
Schedule & Start Times, and
Real Time Results
canterdown.horsespot.net

Search your name for quick views



   Follow us and Tag your #Wins @HorseSpotShows on IG and @Horse Spot on Facebook

To Enter into a Canter Down Farms horse show, go to www.HorseSpot.net and complete these 6 easy steps!

*At the home page, search for our show by name or date. To view the show, click "Dashboard". To enter into our show, you may click the "Add Entry" button from the main search results or in the dashboard view. If you are a first time user of Horse Spot, you will need to sign up and create an account.

*Once you verify your email to complete the account establishment, it will allow you to start the entry process. Click "+New" for each field of "Entry Info" page and enter the appropriate information followed by clicking "Save". This info will save to your profile so that any future entries through Horse Spot will be a more fast process beyond what it already is.

*By clicking "Continue", it will take you to the class selection portion of the entry process. You may either select the division which automatically enters you into all classes associated with that division, or you may scroll down and select each individual class. When finished selecting the classes you want to enter, click "Done" and if the list provided is correct, click "Continue".

*You will now be able to select the appropriate fees that may apply to your entry, such as a stall request, etc. Once you click "Continue", it will take you to the payment section of the entry process. This show supports saved payment methods to provide a secure and hassle free checkout experience. Please enter a credit card to be saved on your account. The card will not be processed for any payments until you give permission for payment at show checkout. If you choose to use a different form of payment, you may do so at that time.

*When finished with payment info, click "Continue" and it will allow you to enter any documents to save on file for you, such as coggins (which are required to enter show grounds). If you do not have them ready to upload at that moment, you may upload them at your convenience, or you may bring them with you on show day.

*At this point of your entry form, you may either add another entry or just click "Checkout" to finalize the entry submission. You will receive a email verification of your entry. The show secretary will review the entry submission and approve it. Once that happens, you can then see your entry in the live dashboard of the show. If you need to make any adds/scratches, you will do so through HorseSpot.net, select the entry you want to change, and submit it for review.

CDF Equitation Flat Challenge Sponsored by:

ANSORGE PLUMBING, INC

Commercial **CFC1426785** Residential

(386) 233-5287

FAMILY OWNED AND OPERATED

For over 20 years, we have had the same goal; customer satisfaction. We take pride in our work to achieve just that.

ABOUT US

Reliable Professionals

- Whether you need a simple faucet installation or complete sewer line replacement, we offer a wide range of residential and commercial plumbing services to meet your needs. We continually strive to exceed expectations by ensuring that each client receives the very best service.

Individualized Plumbing Options

- We strive to exceed expectations by ensuring that all plumbing work is completed to the highest standards. We will provide you with a free consultation to explain all of your available options so that you can choose the scope of work that's right for your home or business.

Customer Satisfaction Guaranteed

- We serve both residential and commercial clients and offer a variety of money-saving solutions. We combine our use of the highest quality parts and equipment, and our dedication to delivering exceptional work to provide you with satisfactory service.



Saturday, Sept.12th Schooling 6:30a-8a

Saturday, Sept.12th Show 8:30a

MHP. ModelHorse / Pony

*Tack Change... **Pleasure starts at 9a**

- 41. W/T/C PleasureU/S
- 42. W/T/C PleasureEqPattern
- 43. W/T/C PleasureHunterHack18"Verticals

- 51. Walk Hunter
- 52. Walk Eq
- 53. Walk Poles
- 54. Walk TrotLeadline1@atime

- 61. W/T All AgesHunterU/S
- 62. W/T All AgesEquitationonFlat
- 63. W/T All AgesPoles
- 64. W/T Canter 1@atime

WU1. Warm UpRed/Blue(opencard)

- 67. W/T Poles U/S
- 68. W/T Poles Course
- 69. W/T Poles Course

MMXCanter Down FarmsMini Medal Xrails W/T (open card when thisheight is set)**\$250 JACKPOT** (refer to rules)*second portion Equitation on Flat (call back). **Top 3 places pay out.**

- 11. Green as Grass Hunter W/T U/S
- 12. Green as Grass Hunter Trot or Canter Xrails 13.
- Green as Grass Hunter Trot or Canter Xrails

- 17. Optimistic Hunter U/S
- 18. Optimistic Hunter Xrails
- 19. Optimistic Hunter Xrails

- 71. Beginner Novice Hunter W/T U/S
- 72. Beginner Novice Hunter W/T/C U/S
- 73. Beginner Novice Hunter Trot or Canter Xrails
- 74. Beginner Novice Hunter Trot or Canter Xrails

DRAG

WU1. Warm Up Red/Blue (open card)

- 81. S/L Stirrup Hunter U/S
- 82. S/L Stirrup Hunter O/F 18"
- 83. S/L Stirrup Hunter O/F 18"
- 87. Steppin' Up Hunter W/T/C U/S
- 88. Steppin' Up Hunter T/C O/F 18"
- 89. Steppin' Up Hunter T/C O/F 18"

EFCCCanterDownFarmsEquitationFlat Challenge (NOT an open card)**\$350JACKPOT-Top3places payout.**

- 21. Open Schooling Hunter U/S 22.
- Open Schooling Hunter O/F 2' 23.
- Open Schooling Hunter O/F 2'
- 94. Modified Hunter U/S
- 95. Modified Hunter O/F 2'3"
- 96. Modified Hunter O/F 2'3"

HH23Canter Down Farms Handy Hunter Classic 2'3" (open card when this height is set) **\$250.JACKPOT**(refer to rules) *second portion U/S (call back). **Top 3 places pay out.**

- 31. Training Hunter U/S
- 32. Training Hunter O/F 2'6"
- 33. Training Hunter O/F 2'6"

OR9. One Round Pick Your Height 2'9" or Higher



"2026 Fall into Autumn"
at Silver Sands Bridle Club
625 Tomoka Farms Rd.
(C.R.415)
NSB, FL 32168

\$1,350 in PRIZE MONEY

\$350 CDF Equitation Flat Challenge
 sponsored by:
ANSORGE PLUMBING, INC
 Commercial CFC1426785 Residential
(386) 233-5287
 Pay Out
1st - \$200 / 2nd - \$100 / 3rd - \$50



2026 SHOW DATES

dbl pts April 26th - "Spring Fling" *dbl pts*

Sept. 12th, 13th - "Fall into Autumn" **some divisions dbl pts

dbl pts Oct. 10th, 11th - "Hallo-Fest" *dbl pts*



Sunday, Sept.13th Schooling 6:30a-8a

Sunday, Sept.13th Show 8:30a

MHP. ModelHorse / Pony

*Tack Change... **Training starts at 9a**

WU2. Warm Up Red/Blue (open card)

- 131. Training Hunter U/S
- 132. Training Hunter O/F 2'6"
- 133. Training Hunter O/F 2'6"
- 194. Modified Hunter U/S
- 195. Modified Hunter O/F 2'3"
- 196. Modified Hunter O/F 2'3"
- 91. Modified Equitation on Flat
- 92. Modified Equitation O/F 2'3"
- 93. Modified Equitation O/F 2'3"

MC23. Canter Down Farms Medal Challenge 2'3" (open card when this height is set) \$250 JACKPOT (refer to rules)*second portion Eq on Flat (call back). Top 3 places pay out.

- 24.
- 25. Open Schooling Eq U/S
- Open Schooling Eq O/F 2'

- 121. Open Schooling Hunter U/S
- 122. Open Schooling Hunter O/F 2'
- 123. Open Schooling Hunter O/F 2'
- 187. Steppin' Up Hunter W/T/C U/S
- 188. Steppin' Up Hunter T/C O/F 18"
- 189. Steppin' Up Hunter T/C O/F 18"

- 181. S/L Stirrup Hunter U/S
- 182. S/L Stirrup Hunter O/F 18"
- 183. S/L Stirrup Hunter O/F 18"

DRAG

WU2. Warm Up Red/Blue (open card)

MMXX. Canter Down Farms Mini Medal Xrails W/T (open card when this height is set) \$250 JACKPOT (refer to rules)*second portion Equitation on Flat (call back). Top 3 places payout.

- 171. Beginner Novice Hunter W/TU/S
- 172. Beginner Novice Hunter W/T/CU/S
- 173. Beginner Novice Hunter Trot or Canter Xrails
- 174. Beginner Novice Hunter Trot or Canter Xrails

- 111. Green as Grass Hunter W/TU/S
- 112. Green as Grass Hunter Trot or Canter Xrails
- 113. Green as Grass Hunter Trot or Canter Xrails

- 117. Optimistic Hunter U/S
- 118. Optimistic Hunter Xrails
- 119. Optimistic Hunter Xrails

- 141. W/T/C Pleasure U/S
- 142. W/T/C Pleasure Eq Pattern
- 143. W/T/C Pleasure Hunter Hack 18" Verticals

- 161. W/T All Ages Hunter U/S
- 162. W/T All Ages Eq on Flat
- 163. W/T All Ages Poles
- 164. W/T Canter 1 @atime

Friday Schooling: *Gate Opens at 2pm

Main Arena Open Schooling 2pm to 6pm

Saturday: *Gate Opens at 6am

Main Arena Open Schooling 6:30am to 8am

SHOW starts 8:30am

Sunday: *Gate Opens at 6am

Main Arena Open Schooling 6:30am to 8am

SHOW starts 8:30am

Grass and Sand Schooling Ring stay open





FRIDAY
SCHOOLING
SEPT. 11, 2026

at Silver Sands Bridle Club

Gate and Office Opens at 2pm

**MUST check in at Office to acquire back number
which MUST be worn while mounted**

Grass & Sand Schooling Rings
open 2pm to 6pm

Main Arena Open Schooling
2pm to 6pm

Office Closes at 5pm

MUST be checked in before mounting!

Gate Closes at 7pm



2026 Show Series

Photographer:

PINK FOX



photography

Official Photographer
Catriona (Cat) McBain-Fox

Ph:386-215-5045

www.pinkfoxphotography.com

info@pinkfoxphotography.com

Equine Sports - Portraits - Weddings





2026

Rules and Regulations

W/T/C Pleasure (classes 41, 42, 43) is open to all horses and/or riders. Hunter Hack will be judged 50/50 on two verticals and under saddle. Ribbons through 6th place. Points follow horses for year end awards and prizes.

Walk (classes 51, 52, 53, 54) is open to riders of all ages. No pros. Not to have trotted in their first two years of showing. May have on a line and trainer in the arena. Ribbons through 6th place. Points follow riders for year end awards and prizes.

W/T All Ages (classes 61, 62, 63, 64) is open to riders of all ages. No pros. Not to have fully competed at a canter in their first two years of showing. May cross enter into Beginner Novice Rider or Mini Medal Crossrails. Ribbons through 6th place. Points follow riders for year end awards and prizes.

Warm Up Red/Blue (classes WU1, WU2) is open to all horses and/or riders. Same horse/rider combination may NOT enter more than two times in one show day, if the entries permit. A first place blue ribbon is awarded for 80+ points. A second place red ribbon is awarded for 70-79 points.

Green as Grass Hunter Crossrails (classes 11, 12, 13) is open to all horses in their first two years of showing and NOT to have competed over 2'. U/S is W/T and Crossrails are trot or canter. Simple changes allowed. Ribbons through 6th place. Points follow horses for year end awards and prizes.

Optimistic Hunter Crossrails (classes 17, 18, 19) is open to all horses and riders in their first three years of showing and NOT to have competed over 2'. May cross enter from Xrails to 2'. Simple changes allowed. Ribbons through 6th place. Points follow horses for year end awards and prizes.

Beginner Novice Hunter W/T Crossrails (classes 71, 72, 73, 74) is open to all horses and riders in their first two years of showing. No pros. May cross enter into S/L Stirrup. Ribbons through 6th place. Points follow horses for year end awards and prizes.

Short/Long Stirrup Hunter 18" (classes 81, 82, 83) is open to all horses NOT to have competed over 2'6". No pros. Simple changes allowed. May cross enter into Beginner Novice Rider or Open Schooling Hunter. Ribbons through 6th place. Points follow horses for year end awards and prizes.

Steppin' Up Hunter 18" (classes 87, 88, 89) is open to all horses and riders in their first three years of showing and NOT to have competed over 2'. May cross enter from Xrails to 2'. Will be asked to canter U/S. Simple changes are allowed. Ribbons through 6th place. Points follow horses for year end awards and prizes.

Open Schooling Hunter 2' (classes 21, 22, 23, 24, 25, 26) is open to all horses NOT to have competed over 2'6". No oxers. Ribbons through 6th place. Points follow horses for year end awards and prizes.

Modified (Equitation and Hunter) 2'3" (classes 91, 92, 93, 94, 95, 96) is open to all horses NOT to have competed over 3'. No pros in Equitation. Ribbons through 6th place. Points follow horses in the hunter division (94, 95, 96) for year end awards and prizes, while the equitation division (91, 92, 93) follows the riders for year end awards and prizes.

Training Hunter 2'6" (classes 31, 32, 33, 34, 35, 36) is open to all horses/ponies and can be ridden by any rider (amateur or pro). NOT to have competed over 3'. Ribbons through 6th place. Points follow horses for year end awards and prizes.

One Round Pick Your Height (classes OR9, OR3) is open to all horses and/or riders. Can enter same horse/rider combination no more than three times. Lowest height starts first. Ribbons through 6th place. No championship.

CDF \$250 JACKPOTS (classes MC23, HH23, MMX, MC26, HH30) are open to all horses and/or riders. No pros in Mini Medal Crossrails. Must enter into at least one regular class to enter a jackpot class. Will be scored by over fences with all top scores being invited back for a flat portion. Must have three entries to pay out. First place pays \$150. Second place pays \$75. Third place pays \$25. Ribbons through 8th place. Points follow horses in the hunter jackpots (HH23, HH30) for year end awards and prizes, while the equitation jackpots (MC23, MMX, MC26) follow the riders for year end awards and prizes. If any jackpot classes are sponsored, the new pay out rate will be posted on that schedule.

CDF Equitation Flat Challenge (class EFC) is open to all horses and/or riders. Must enter into at least one regular class to enter a jackpot class. Must have three entries to pay out. First place pays \$200. Second place pays \$100. Third place pays \$50. Ribbons through 8th place. Points follow riders for year end awards and prizes.

Sponsored by:



***Grand and Reserve Championship** ribbons are awarded ONLY when there are three entries in each class of that division. Points follow this scale: 1st=7pts ; 2nd=5pts ; 3rd=4pts ; 4th=3pts ; 5th=2pts ; 6th=1pt. And don't forget to pick a prize!

***Year End Awards and Prizes** are distributed to the horses or riders that have competed in two of the three CDF shows to qualify for that division and/or specialty class.

**Enter into the show
AND
Follow the show live
at
www.HorseSpot.net**

CONTACT US



at cdfentries@yahoo.com
with any inquiries.



PLEASE NOTE:

*April 26th - "Spring Fling" is a shortened (one day) schedule and is entirely double pointed
Sept. 12th, 13th - "Fall into Autumn" is a full schedule (Friday and Saturday) and is only double pointed for what did not run in April.*

Oct. 10th, 11th - "Hallo-Fest" is a full schedule (Friday and Saturday) and the entire show is dbl pnts

**Must participate in two of the three shows to qualify for Year End Banquet*



Friday Schooling - \$15 per horse/rider combo *Main Arena Open Schooling Friday Noon to 5p ONLY*

Warm Up - \$7 per mount/per trip

!!!! OR get a \$25 Warm Up Bracelet !!!! (covers Fri. Sch., Warm Up 1 on Fri., and Warm Up 2 on Sat.)

Regular Classes - \$20 each

Jackpot Classes - \$45 each

Office Fee - \$35 per entry

Medic - \$25 per rider

Showing Ship In Only - \$25 per day

Non-showing Ship In Friday - \$60 (covers office, medic, Friday Schooling)

Non-Showing Ship In Saturday - \$50 (covers office, medic, and grounds use)

Stall (one day only) - \$65

Stall (weekend) - \$100

Tack Stall - same cost as horse stall, but must be included in entry

30amp or 50amp Water and Electric Hook Up - \$45 per day OR \$85 for weekend

\$10 CREDIT to show bill if entry received Sunday before show

\$20 LATE ENTRY Fee if received after Wednesday before show

Add/Scratch Fee - \$3 per class at office 3 classes prior / \$5 per class at gate

Convenience Fee - \$5 per show bill if paying with Venmo or Zelle

Open Balance Fee - \$25 per show bill if unpaid balance is remaining





VENDORS

The Rustick Road



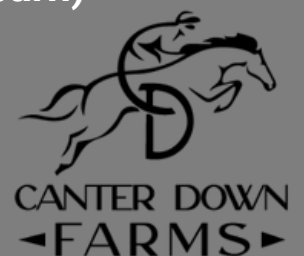
If you are interested in becoming a vendor at our shows, please contact us at cdfentries@yahoo.com or 386-410-0275.



Show Grounds Map

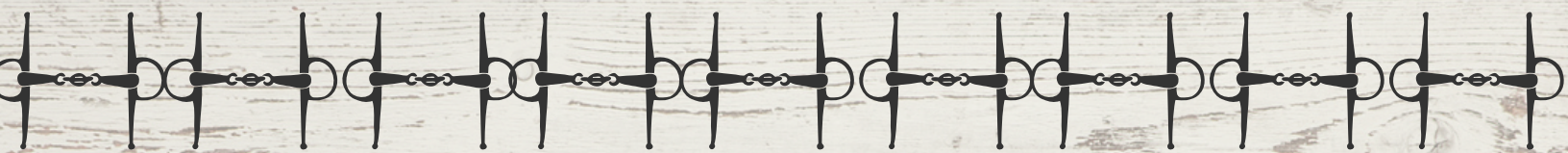


- 120' x 250' Covered Arena with nice footing
- 100 Stalls
- 26 Hook-Up Sites for Water and Electric (six-50amp / twenty-30amp)
- 12 Wash Racks total (located around outside ends of each barn)
- Large Schooling Ring
- Indoor Restrooms with a shower
- Plenty of Parking
- Easy Access from highways





JUMP SPONSORS



Madison Kondracki is a highly accomplished professional show jumper who represents the US in both national and international competitions. She owns and manages Kondracki LLC, which serves as the central hub for her equine training and horse breeding operations.



Equine Reproduction Center of Central Florida (ERCCF) is an elite veterinary reproduction clinic on the central east coast of Florida. We pride ourselves in providing a complete and detailed management of your equine partner to maximize breeding success!



JUMP SPONSORS



Dr. Leigha Heverly is the owner & operator of All Spines Chiropractic Inc. She graduated from the University of Florida with a Bachelors of Science. Following UF, she attended Palmer College of Chiropractic in Florida where she received her Doctorate in Chiropractic Medicine. In her final year of Chiropractic school she expanded her scope of practice by adding an animal chiropractic certification from Parker College of Chiropractic in Texas. Dr. Heverly is additionally accredited by the American Chiropractic Veterinarian Associated and works in conjunction with some of the best equine healthcare providers in the business. Dr. Heverly is passionate about the importance of full body functionality, longevity and mobility and the value of preventative care. She takes pride in providing quality, professional care, and takes a personal interest in each of her patient's individual needs from a total body health prospective.



Jump Sponsors



www.TheCabinetQueen.net

Lisa Marie 386-500-8558

thecabinetqueen1@gmail.com

The Cabinet Queen



Specializing in cabinet refinishing in Port Orange, Daytona Beach, Daytona Beach Shores, Ponce Inlet, Ormond Beach, Palm Coast, Holly Hill, South Daytona, New Smyrna, Edgewater, Deland, Flagler, Orlando and the surrounding areas. Let The Cabinet Queen professionally refinish your existing wood, laminate, and thermofoil cabinets with our high quality paint products! Why reface or replace your old cabinets when The Cabinet Queen can give you the new cabinet look for less?

ARROW

SITE SERVICES

386-588-9509

**specializes in Underground
Utilities and Civil
Construction.**



**(386)
410
0275**

**JUST JUMPS
BY KAREN KNIES**



**Sponsor a Jump at
our show to boost
your business!**



**Buy a Jump
to use in
your ring!**



**Hand built using
quality materials
and artistic
personalized
designs.**



Saturday, Oct.10th Schooling 6:30a-8a

Saturday, Oct.10th Show 8:30a

MHP. ModelHorse / Pony

*Tack Change... **Pleasure starts at 9a**

- 41. W/T/C PleasureU/S
- 42. W/T/C PleasureEqPattern
- 43. W/T/C PleasureHunterHack18"Verticals

- 51. Walk Hunter
- 52. Walk Eq
- 53. Walk Poles
- 54. Walk TrotLeadline1@atime

- 61. W/T All AgesHunterU/S
- 62. W/T All AgesEquitationonFlat
- 63. W/T All AgesPoles
- 64. W/T Canter 1@atime

WU1. Warm UpRed/Blue(opencard)

- 67. W/T Poles U/S
- 68. W/T Poles Course
- 69. W/T Poles Course

MMXCanter Down FarmsMini Medal Xrails W/T (open card when this height is set) **\$250 JACKPOT** (refer to rules)*second portion Equitation on Flat (call back). **Top 3 places pay out.**

- 11. Green as Grass Hunter W/T U/S
- 12. Green as Grass Hunter Trot or Canter Xrails
- 13. Green as Grass Hunter Trot or Canter Xrails

- 17. Optimistic Hunter U/S
- 18. Optimistic Hunter Xrails
- 19. Optimistic Hunter Xrails

- 71. Beginner Novice Hunter W/T U/S
- 72. Beginner Novice Hunter W/T/C U/S
- 73. Beginner Novice Hunter Trot or Canter Xrails
- 74. Beginner Novice Hunter Trot or Canter Xrails

DRAG

WU1. Warm Up Red/Blue (open card)

- 81. S/L Stirrup Hunter U/S
- 82. S/L Stirrup Hunter O/F 18"
- 83. S/L Stirrup Hunter O/F 18"
- 87. Steppin' Up Hunter W/T/C U/S
- 88. Steppin' Up Hunter T/C O/F 18"
- 89. Steppin' Up Hunter T/C O/F 18"

EFCCCanterDownFarmsEquitationFlat Challenge (NOT an open card) **\$350 JACKPOT**-Top3places payout.

- 21. Open Schooling Hunter U/S
- 22. Open Schooling Hunter O/F 2' 23.
- 23. Open Schooling Hunter O/F 2'
- 94. Modified Hunter U/S
- 95. Modified Hunter O/F 2'3"
- 96. Modified Hunter O/F 2'3"

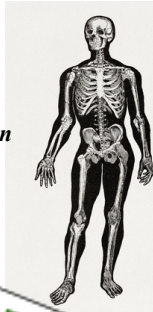
HH23Canter Down Farms Handy Hunter Classic 2'3" (open card when this height is set) **\$250 JACKPOT**(refer to rules) *second portion U/S (call back). **Top 3 places pay out.**

- 31. Training Hunter U/S
- 32. Training Hunter O/F 2'6"
- 33. Training Hunter O/F 2'6"

OR9. One Round Pick Your Height 2'9" or Higher



"2026 Hallo-Fest"
at Silver Sands Bridle Club
625 Tomoka Farms Rd.
(C.R.415)
NSB, FL 32168



\$1,350 in PRIZE MONEY

\$350 CDF Equitation Flat Challenge
sponsored by:
ANSORGE PLUMBING, INC
Commercial CFC1426785 Residential
(386) 233-5287
Pay Out
1st - \$200 / 2nd - \$100 / 3rd - \$50



Sunday, Oct.12th Schooling 6:30a-8a

Sunday, Oct.12th Show 8:30a

MHP. ModelHorse / Pony

*Tack Change... **Training starts at 9a**

WU2. Warm Up Red/Blue (open card)

- 131. Training Hunter U/S
- 132. Training Hunter O/F 2'6"
- 133. Training Hunter O/F 2'6"

- 194. Modified Hunter U/S
- 195. Modified Hunter O/F 2'3"
- 196. Modified Hunter O/F 2'3"

- 91. Modified Equitation on Flat
- 92. Modified Equitation O/F 2'3"
- 93. Modified Equitation O/F 2'3"

MC23. Canter Down Farms Medal Challenge 2'3" (open card when this height is set) **\$250 JACKPOT** (refer to rules)*second portion Eq on Flat (call back). **Top 3 places pay out.**

- 24.
- 25. Open Schooling Eq U/S
- Open Schooling Eq O/F 2'

- 121. Open Schooling Hunter U/S
- 122. Open Schooling Hunter O/F 2'
- 123. Open Schooling Hunter O/F 2'

- 187. Steppin' Up Hunter W/T/C U/S
- 188. Steppin' Up Hunter T/C O/F 18"
- 189. Steppin' Up Hunter T/C O/F 18"

- 181. S/L Stirrup Hunter U/S
- 182. S/L Stirrup Hunter O/F 18"
- 183. S/L Stirrup Hunter O/F 18"

DRAG

WU2. Warm Up Red/Blue (open card)

MMXX. Canter Down Farms Mini Medal Xrails W/T (open card when this height is set) **\$250 JACKPOT** (refer to rules)*second portion Equitation on Flat (call back)-**Top 3 places payout.**

- 171. Beginner Novice HunterW/TU/S
- 172. Beginner Novice HunterW/T/CU/S
- 173. Beginner Novice HunterTrotorCanterXrails
- 174. Beginner Novice HunterTrotorCanterXrails

- 111. Green as Grass HunterW/TU/S
- 112. Green as Grass HunterTrotorCanterXrails
- 113. Green as Grass HunterTrotorCanterXrails

- 117. Optimistic HunterU/S
- 118. Optimistic HunterXrails
- 119. Optimistic HunterXrails

- 141. W/T/C PleasureU/S
- 142. W/T/C PleasureEqPattern
- 143. W/T/C PleasureHunterHack18"Verticals

- 161. W/T All Ages HunterU/S
- 162. W/T All Ages EqonFlat
- 163. W/T All Ages Poles
- 164. W/T Canter 1 @atime



Friday Schooling: *Gate Opens at 2pm
Main Arena Open Schooling 2pm to 6pm
Saturday: *Gate Opens at 6am
Main Arena Open Schooling 6:30am to 8am
SHOW starts 8:30am
Sunday: *Gate Opens at 6am
Main Arena Open Schooling 6:30am to 8am
SHOW starts 8:30am
Grass and Sand Schooling Ring stay open

2026 SHOW DATES

- *dbl pts* April 26th - "Spring Fling" *dbl pts*
- Sept. 12th, 13th - "Fall into Autumn" **some divisions dbl pts
- *dbl pts* Oct. 10th, 11th - "Hallo-Fest" *dbl pts*

