



Port Phillip North Yacht Clubs

Incorporating

- Royal Melbourne Yacht Squadron
- Royal Yacht Club of Victoria
- Hobsons Bay Yacht Club

Standard Sailing Instruction - Attachment 1
Courses and Marks – v8.0

Courses may be selected from the following –

Contents

Windward Leeward (Laid) Courses	page 3
RYCV - Wednesday Afternoon, Sunday Morning Courses	page 4
Combined Wednesday Twilights	page 6
HBYC - Sunday Pursuit Courses	page 8
HBYC - Thursday Twilight Pursuit	page 9
HBYC/RYCV Brass Monkey - Divisions 2 and 3	page 10
HBYC/RYCV Brass Monkey - Division 1	page 11
HBYC Two-Handed and Club Courses	page 13
RYCV Club Courses	page 14
RMYS Fixed mark courses, Tower Start/Finish	page 15
RMYS Light Tower Instructions	page 21
Mark Positions	page 22

Note 1 If noted in the course description, Bounding Marks (Channel 71, 11 and 9) are not marks of the course, these are passing marks and therefore have a required side as indicated.

Note 2 For all courses, a laid mark may be specified as the first mark after the start.

This mark will be an orange inflatable buoy. The mark will be laid approximately to windward of the starting line at approximately 0.5 to 1.0 nm from the starting line. The direction of rounding the mark will be indicated by the display of a green or red flag from the Starting Vessel – green for starboard rounding and red for port rounding.

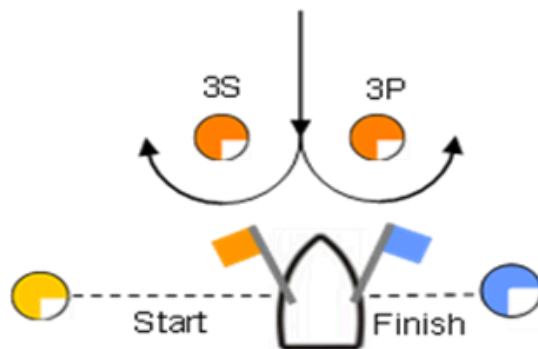
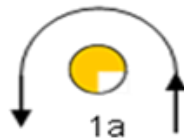
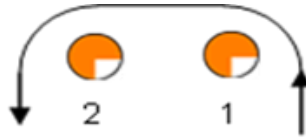
If no rounding signal flag is made, the mark is deleted from the course to sail.

Note 3 The positions of all marks of the course on the course diagrams are approximate and for illustrative purposes only. They should not be used for navigation and the positions may vary on the day.

Revisions –

version 8.0 - RMYS courses and additional Combined Wednesday Twilight courses added.

RYCV – Windward/Leeward (Laid) Courses



Course One - Start, 1, 2, 3 (Gate), 1 Finish

Course Two - Start, 1, 2, 3 (Gate), 1a Finish

Course Three Start, 1a, 3 (Gate), 1a Finish

At the warning signal the course to be sailed will be signaled by the display of the corresponding international numeral pennant

The approximate magnetic bearing of the first rounding mark in relation to the start mark may be displayed on a board on the Race Committee Vessel prior to the start.

In the event of 3S being missing 3P should be rounded to port.

- Start mark will be a yellow inflatable mark.
- Finish mark will be a blue inflatable mark
- 1, 2, 3P & 3S marks will be orange inflatable marks.
- Mark 1a will be a yellow inflatable mark.

Any change mark will be the same color as the mark it replaces, but with a black band.

RYCV - Wednesday Afternoon, Sunday Morning

Course 9 - Southerly

Distance 7.6nm

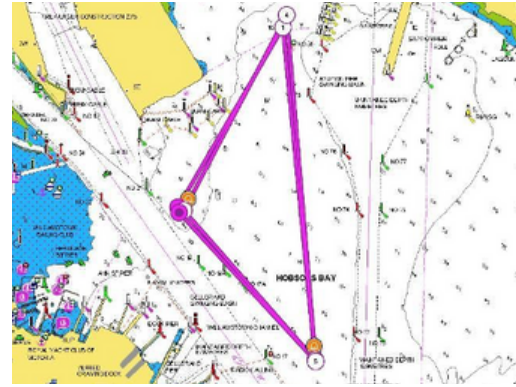


Start/Finish – Near Xray mark.

Start - V mark to port – R4 to port - Xray to port - V mark to port R4 to port - Xray to port - V mark to port - R4 to port – finish.

Course 10 - Northerly

Distance 7.6nm



Start/Finish – Near Xray mark.

Start – R4 to starboard – V mark to starboard – Xray to starboard – R4 to starboard – V mark to starboard - Xray to starboard - R4 to starboard - V mark to starboard - finish.

Course 11 - East/Westerly

Distance 7.0nm

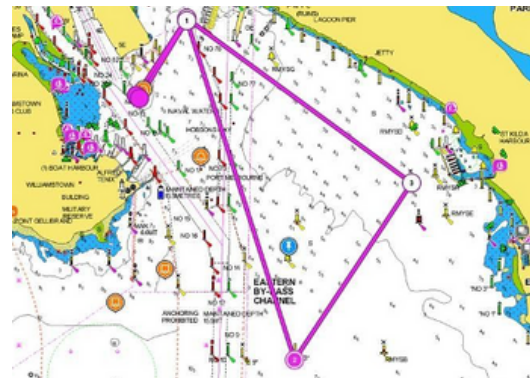


Start/Finish - Near Xray mark.

Start – V mark to starboard - Gellibrand Shoal mark to starboard – P3 to port – Gellibrand Shoal mark to port – V mark to port - finish.

Course 12 - Southerly

Distance 7.7nm



Start/Finish - Near Xray mark.

Start – R4 mark to starboard – R3 to port – RMYS A to port – R4 to port – finish.

Course 13 - East/Westerly

Distance 7.7nm



Start/Finish - Near Xray mark.

Start – R4 mark to starboard – RMYS A to starboard - R3 to starboard – R4 to port – finish.

Course 14 - South Easterly

Distance 7.4nm



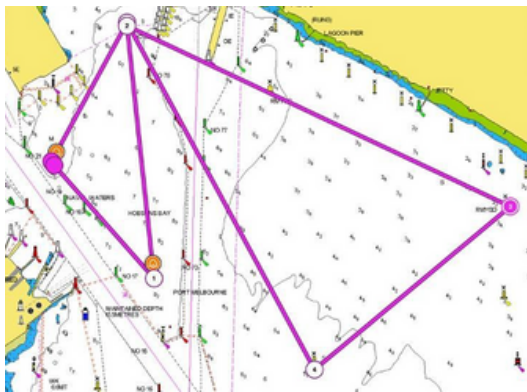
Start/Finish - Near Xray mark.

Start – R4 to starboard – RMYS C to port – RMYS D to port – R4 to port – V mark to starboard - finish.

RYCV - Wednesday Afternoon, Sunday Morning

Course 15 - South Westerly

Distance 7.4nm

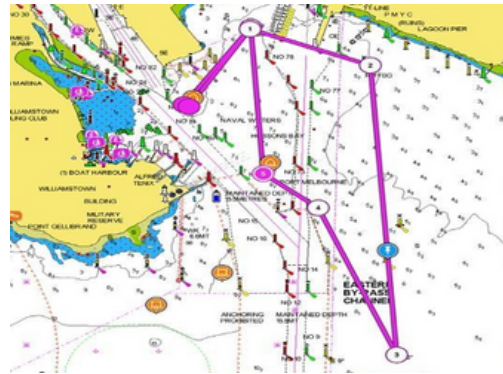


Start/Finish - Near Xray mark.

Start – V mark to port – R4 to starboard – RMYS D to starboard – RMYS C to starboard – R4 to port – finish.

Course 16 - North Easterly

Distance 7.1nm

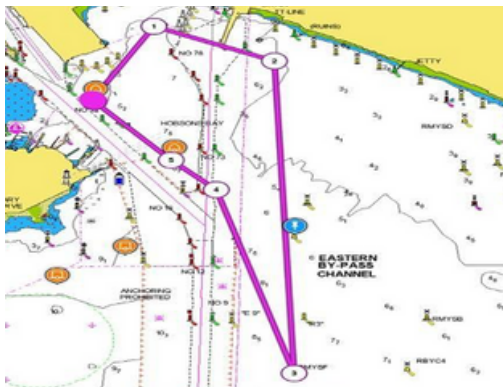


Start/Finish - Near Xray mark.

Start – R4 to starboard – RMYS G to starboard – R3 to starboard – passing Ch 71 to port – V mark to starboard – R4 to port – finish.

Course 17 - Southerly

Distance 6.7nm

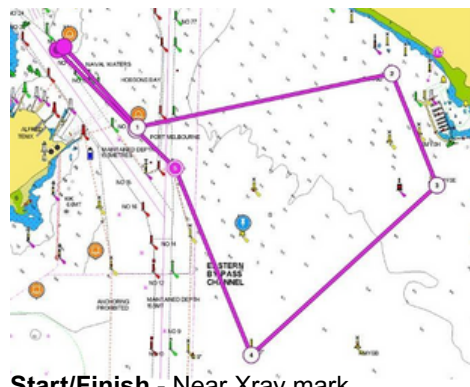


Start/Finish - Near Xray mark.

Start – R4 to starboard – RMYS G to starboard – RMYS F to starboard – passing Ch 71 to port – V mark to starboard – finish.

Course 18 - Southerly

Distance 6.9nm

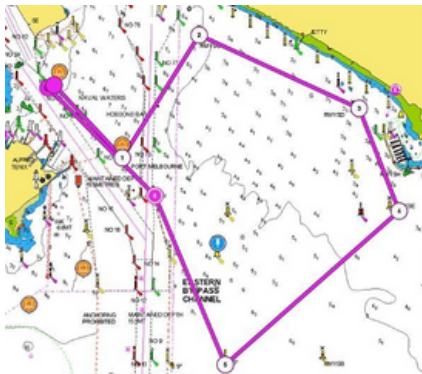


Start/Finish - Near Xray mark.

Start – V mark to port – RMYS D to starboard – RMYS E to starboard – R3 to starboard – passing Ch 71 to port – V mark to starboard – finish.

Course 19 - Southerly

Distance 7.5nm



Start/Finish - Near Xray mark.

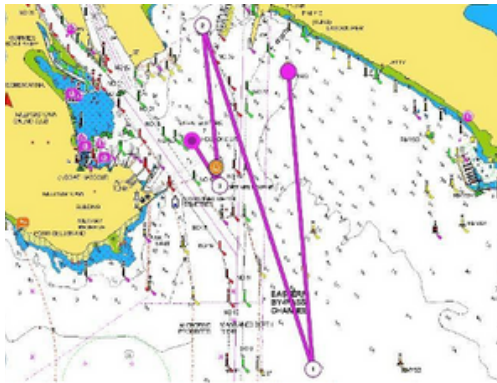
Start – V mark to port – RMYS G to starboard – RMYS D to starboard – RMYS E to starboard – R3 to starboard – passing Ch 71 to port – V mark to starboard – finish.

version 8.0

Combined Wednesday Twilights

Course 20 - Southerly

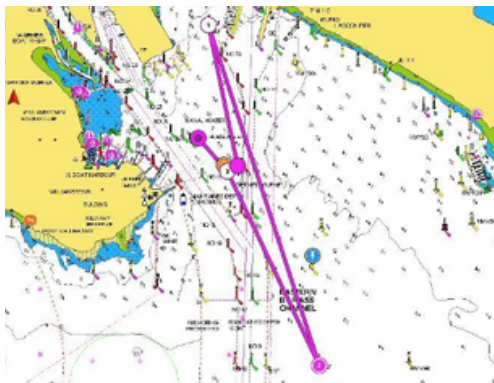
Distance 6.6nm



Start - Near RMYS G. **Finish** – X Ray mark
 Start – east of bounding mark Ch 71, Ch 11, Ch 9 - R3 to starboard - east of bounding mark Ch 9, Ch 11, Ch 71 – R4 to port – V mark to starboard – finish.

Course 22 - Northerly

Distance 5.2nm



Start – Near Ch 72. **Finish** – X Ray mark
 Start – R4 to starboard - east of bounding mark Ch 71, Ch 11, Ch 9 – R3 to starboard – east of bounding mark Ch 9, Ch 11, Ch 71 - V mark to port – finish.

Course 24 - Southerly

Distance 2.6nm



Start – Near RMYS G. **Finish** – X Ray mark
 Start - east of bounding mark Ch 71, Ch 11 – SB3 to starboard – east of bounding mark Ch 11, Ch 71 - V mark to port – finish.

Course 21 - Southerly

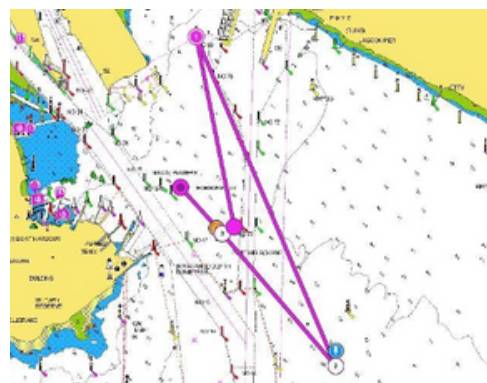
Distance 5.2nm



Start - Near RMYS G. **Finish** – X Ray mark
 Start – east of bounding mark Ch 71, Ch 11 – SB3 to starboard - east of bounding mark Ch 11, Ch 71 – R4 to port – V mark to starboard – finish.

Course 23 - Northerly

Distance 4.2nm



Start – Near Ch 72. **Finish** – X Ray mark
 Start – R4 to starboard - east of bounding mark Ch 71, Ch 11 – SB3 to starboard – east of bounding mark Ch 11, Ch 71 - V mark to port – finish.

Course 25 - Northerly

Distance 2.1nm

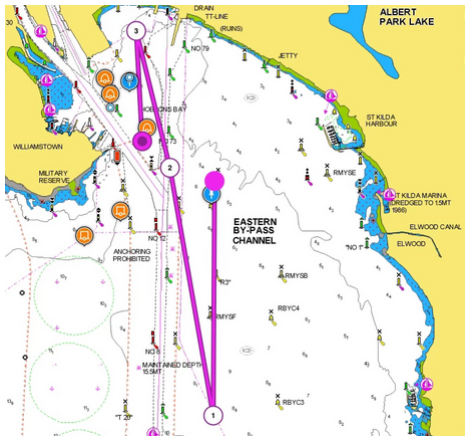


Start – Near Ch 72. **Finish** – X Ray mark
 Start – R4 to port - V mark to starboard – finish.

Combined Wednesday Twilights

Course 26 - Southerly

Distance 7.3nm

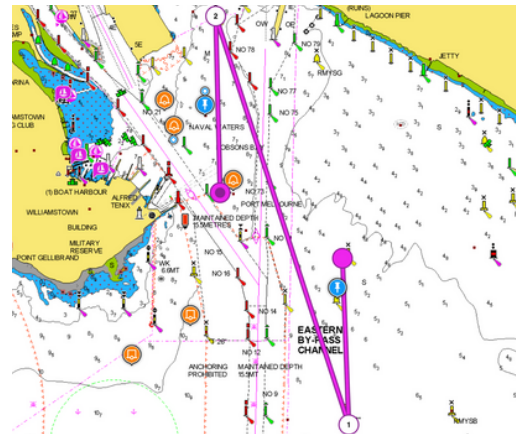


Start - Near RMYC C. **Finish** – V mark

Start - east of bounding marks Ch 11, Ch 9, Ch 7, Ch 5 - R2 to starboard - east of bounding marks Ch 5, Ch 7, Ch 9, Ch 11, Ch 71 - R4 to port - finish

Course 27 - Southerly

Distance 4.8nm

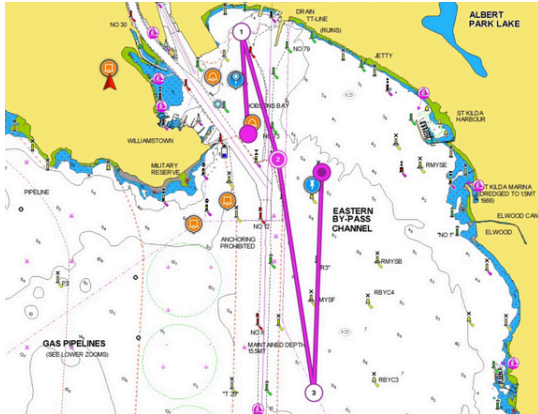


Start - Near RMYC C. **Finish** – V mark

Start - east of bounding marks Ch 11, Ch 9 - R3 to starboard - east of bounding marks Ch 9, Ch 11, Ch 71 - R4 to port - finish.

Course 28 - Northerly

Distance 7.2nm

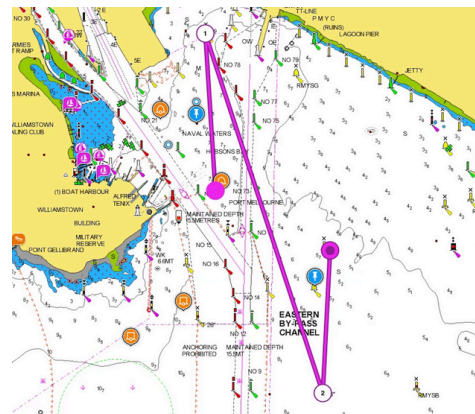


Start – near V mark. **Finish** – near RMYC C

Start - R4 to starboard - east of bounding marks Ch 71, Ch 11, Ch 9, Ch 7, Ch 5 - R2 to port - finish.

Course 29 - Northerly

Distance 4.7nm



Start – near V mark. **Finish** – near RMYC C

Start - R4 to starboard - east of bounding marks Ch 71, Ch 11, Ch 9 - R3 to port - finish.

HBYC - Sunday Pursuit

Course 30 - Southerly

Distance 7.0nm



Start/Finish - East of Ch 75.

Start - R4 to starboard - RMYS A to starboard - RMYS F to starboard, east of bounding marks Ch 7, Ch 9, Ch 11 and Ch 71 – finish.

Course 31 - South/South-East

Distance 7.0nm



Start/Finish - East of Ch 75.

Start - east of bounding marks Ch 71, Ch 11, Ch 9 and Ch 7 – RMYS F to port - RMYS A to port - R4 to port - finish

Course 32 - Westerly/Easterly

Distance 5.1nm

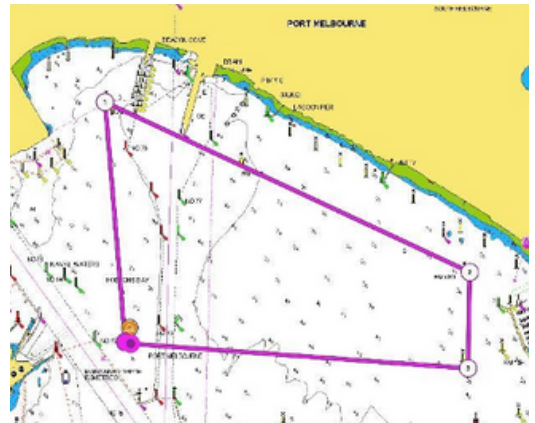


Start/Finish - Near V mark.

Start – RMYS A to port - RMYS D to port – R4 to port - finish

Course 33 - Northerly

Distance 5.1nm



Start/Finish - Near V mark.

Start - R4 to starboard - RMYS D to starboard - RMYS A to starboard – finish.

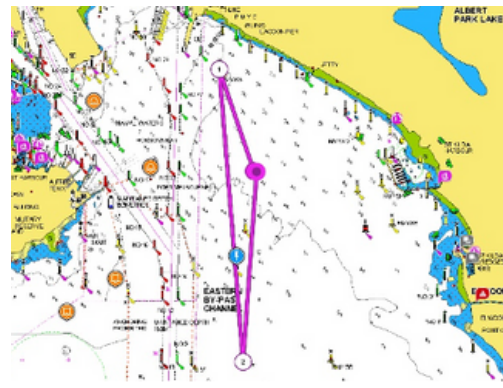
Distance 4.5nm



Start/Finish - Near V mark.

Start - R4 to port – V mark to port – R4 to port – finish.

Distance 4.0nm



Start/Finish – East of Ch 73.

Start – RMYG to port, east of bounding marks Ch 7, Ch 9, Ch 11 and Ch 71 – R3 to port - finish.

Distance 4.5nm



Start/Finish - Near R4.

Start – V mark to port – R4 to port – V mark to port – finish.

Distance 4.6nm



Start/Finish – East of Ch 73.

Start - east of bounding marks Ch 7, Ch 9, Ch 11 and Ch 71 – R3 to port - RMYG to port – finish.

Distance 5.2nm



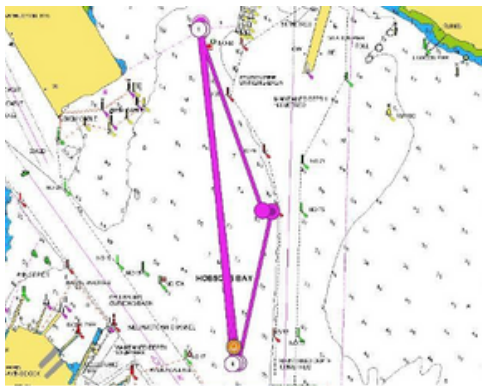
Start/Finish - East Ch 75.

Start – RMYG to port – through start/finish to port - RMYG to port – finish.

Brass Monkey - Divisions 2 and 3

Course 50 - Northerly

Distance 6.9nm



Start/Finish - West Ch 74.

Start - R4 to port - V mark to port - R4 to port - V mark to port - R4 to port - V mark to port - finish.

Course 52 - Westerly

Distance 6.6nm

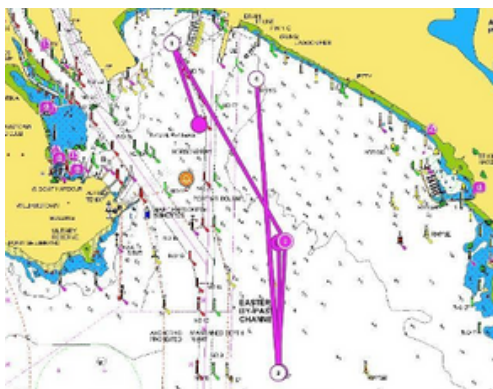


Start/Finish - 500m East of Ch 73.

Start - V mark to starboard - RMYS D to starboard - V mark to starboard - RMYS D to starboard - finish.

Course 54 - Northerly

Distance 8.8nm

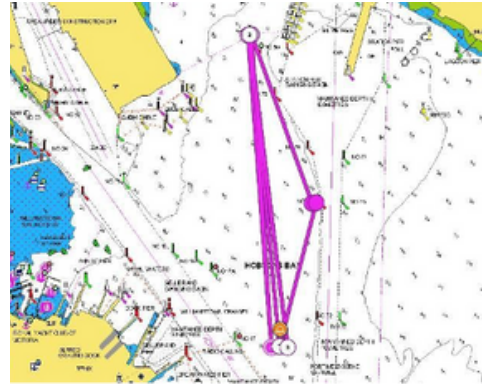


Start: West of Ch 74.

Finish: between RMYS C and Committee Vessel.
Start - R4 to starboard - RMYS C to starboard - R3 to port - east of bounding marks Ch 11, Ch 9 and Ch 71 - RMYS G to port - R3 to port - east of passing mark Ch. 11 - finish.

Course 51 - Southerly

Distance 6.9nm

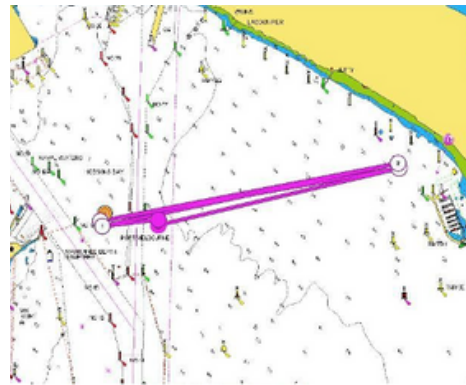


Start/Finish - West Ch 74.

Start - V mark to starboard - R4 to starboard - V mark to starboard - R4 mark to starboard - V mark to starboard - R4 to starboard - finish.

Course 53 - Easterly

Distance 6.6nm



Start/Finish - 500m East of Ch 73.

Start - RMYS D to starboard - V mark to starboard - RMYS D to starboard - V mark to starboard - finish

Course 55 - Northerly

Distance 11.5nm



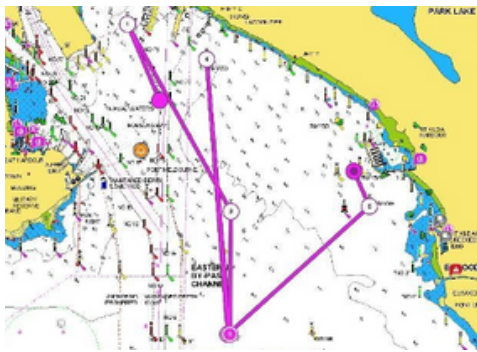
Start: West of Ch 74.

Finish: between RMYS C and Committee Vessel.
Start - R4 to starboard - RMYS C to starboard - R2 to port - east of bounding marks Ch 7, Ch 9, Ch 11 and Ch 71 - RMYS G to port - R3 to port - east of bounding mark Ch. 11 - finish.

Brass Monkey - Divisions 1

Course 60 - Northerly

Distance 9.5nm



Start: West of Ch 74.

Finish: between the RMYs tower and RMYs A.

Start – R4 to starboard – RMYs C to starboard – R3 to port – east of bounding marks Ch 11, Ch 9 and Ch 71 – RMYs G to port – R3 to port – RMYs E to port – finish

Course 62 - Southerly

Distance 8.3nm



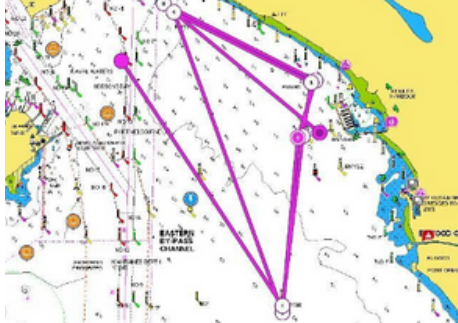
Start: West of Ch 74.

Finish: between the RMYs tower and RMYs A.

Start - east of bounding marks Ch 71, Ch11, Ch 9 and 7 – R3 to port - RMYs G to port - east of bounding marks Ch 71, Ch11, Ch 9 and Ch 7 - R3 to port – RMYs E to port – finish.

Course 64 - South-East

Distance 12.5nm



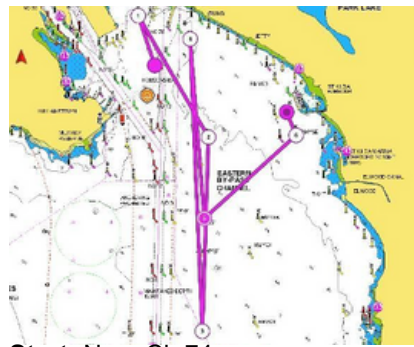
Start: West of Ch 74.

Finish: between the RMYs tower and RMYs A.

Start - east of bounding mark Ch.71 – RMYs B to port – RMYs A to starboard – RMYs D to port – RMYs G to port – RMYs B to port – RMYs A to starboard – RMYs D to port - RMYs G to port – finish.

Course 61 - Northerly

Distance 12.3nm



Start: Near Ch 74.

Finish: between the RMYs tower and RMYs A.

Start – R4 to starboard – RMYs C to starboard – R2 to port – east of bounding marks Ch 7, Ch 9, Ch 11 and Ch 71 – RMYs G to port – R3 to port – RMYs E to port – finish.

Course 63 - Southerly

Distance 13.6nm



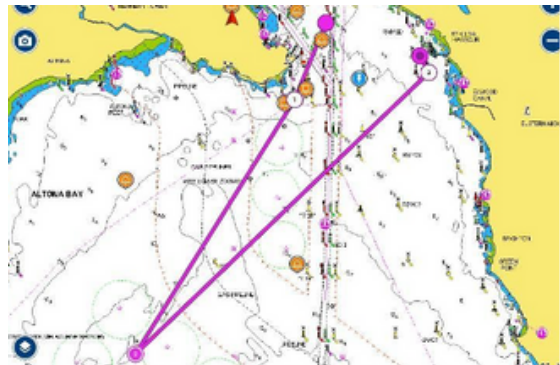
Start: West of Ch 74.

Finish: between the RMYs tower and RMYs A.

Start - east of bounding marks Ch 71, Ch 11, Ch 9 and Ch 7 – R2 to port – RMYs G to port – east of bounding marks Ch 71, Ch 11, Ch 9 and Ch 7 - R2 to port – RMYs E to port – finish

Course 65 - South-West

Distance 13.8nm



Start: West of Ch 74.

Finish: between the RMYs tower and RMYs A.

Start – Gellibrand Shoal mark to starboard – Outer Anchorage to port – RMYs E to port – finish.

Shorten Course Option – delete 'Outer Anchorage to port' and replace with 'P2 to port'.

Brass Monkey - Divisions 1

Course 66 - Westerly

Distance 10.8nm



Start: East of Ch 73.

Finish: between the RMYs tower and RMYs A.

Start – V mark to port – RMYs B to starboard – P3 to port – RMYs B to port - RMYs E to port – finish.

Course 66S – Distance 6.1nm

Shorten Course Option – a laid mark may be laid approx 1.0nm west of RMYs B replacing P3.

Course 67 - Easterly

Distance 11.7nm



Start: East of Ch 73.

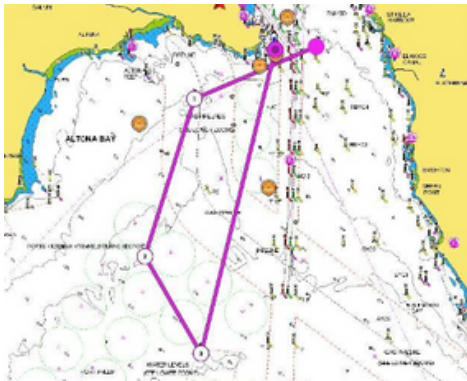
Finish: between the RMYs tower and RMYs A.

Start – RMYs A to starboard – RMYs B to starboard - P3 to port – RMYs B to port - RMYs E to port – finish.

Course 67S – Distance 6.4nm

Shorten Course Option – a laid mark may be laid 1nm west of RMYs B replacing P3.

Distance 16.3nm



Start: Near RMYC C.

Finish – line projected between the Williamstown Timeball Tower and T28 passing T28 to starboard.
 Start – P3 to port - Outer Anchorage to port – Spoil Ground to Port – Gellibrand Shoal Mark to port – finish.

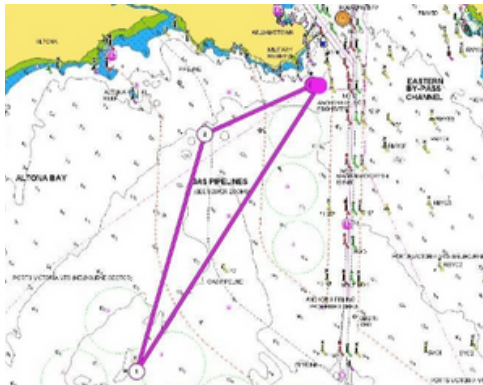
Distance 11.2nm



Start/Finish: South. of Gellibrand Shoal Mark.

Start - east of bounding mark Pt Cook East Cardinal Mark - Pt Cook South Pile to port - finish.

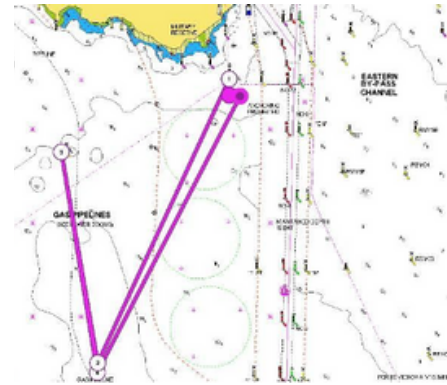
Distance 10.6nm



Start/Finish: South. of Gellibrand Shoal Mark

Start - Outer Anchorage to starboard - P3 to starboard – finish.

Distance 10.4nm



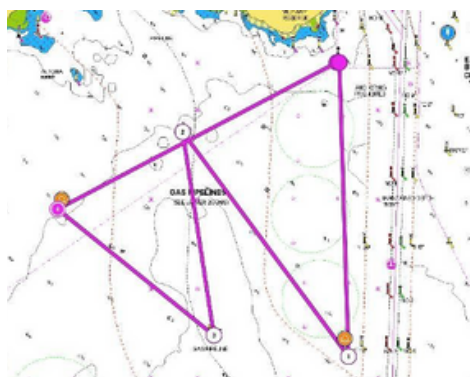
Start/Finish: 750m South of Gellibrand Shoal Mark

Start - A Mark to Port - P2 to starboard - P3 to starboard - P2 to port – finish.

RYCV Club Courses

Course 80 - Southerly

Distance 13.4nm



Start/Finish – South of Gellibrand Shoal Mark
Start – Uniform mark to starboard - P3 to port –
P2 to starboard – Zulu mark to starboard - finish.

Course 81 - Southerly

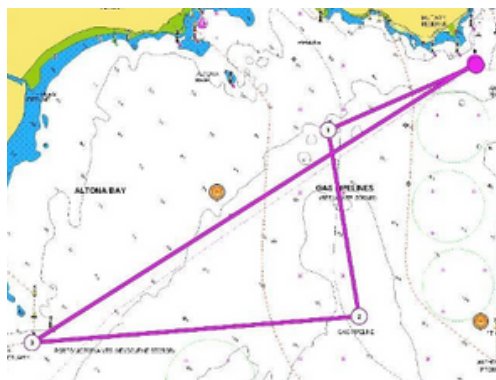
Distance 11.7nm



Start/Finish: South of Gellibrand Shoal Mark
Start – P2 to starboard – Zulu mark to starboard
– P3 to starboard – P2 to port - finish.

Course 82 - Westerly

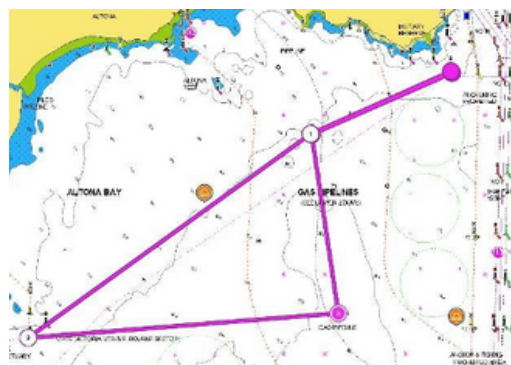
Distance 13.4nm



Start/Finish: South of Gellibrand Shoal Mark
Start – P3 to port – P2 to starboard – Pt Cook
Sanctuary Limit mark to starboard - finish

Course 83 - Westerly

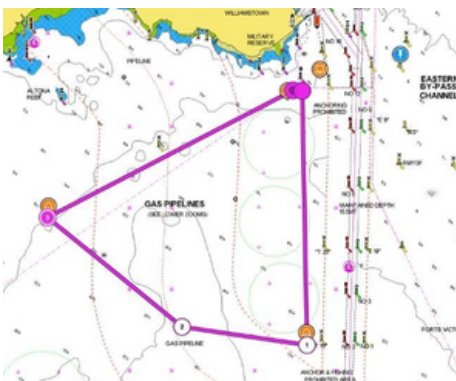
Distance 13.4nm



Start/Finish: South of Gellibrand Shoal Mark
Start – P3 to port - Pt Cook Sanctuary Limit mark to
port – P2 to port – P3 to starboard - finish.

Course 84 - Westerly

Distance 9.5nm



Start/Finish: South of Gellibrand Shoal Mark
Start – Uniform mark to starboard – P2 to
starboard – Zulu mark to starboard –finish.

Course 85 - Westerly

Distance 10.9nm



Start/Finish: South of Gellibrand Shoal Mark
Start – P2 to starboard – P3 to starboard – P2 to
port – finish

RMYS Club Courses - Tower start/finish

Course 56 + laps - Southerly

Distance 3.0nm



Start/Finish – RMYC Tower

Start – RMYC E to starboard – RMYC C to starboard – RMYC D to starboard – RMYC A to starboard - finish.

Course 57 + laps - Northerly

Distance 3.0nm

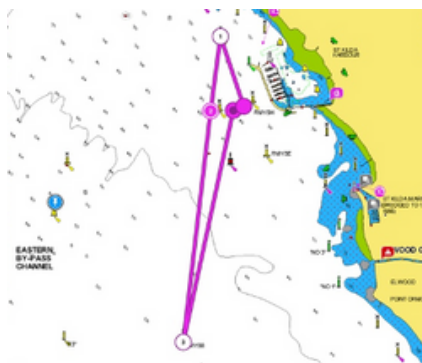


Start/Finish: RMYC Tower

Start – RMYC D to port – RMYC C to port – RMYC B to port – RMYC A to port - finish.

Course 58 + laps - Southerly

Distance 3.4nm



Start/Finish: RMYC Tower

Start – RMYC B to starboard – RMYC A to starboard – RMYC D to starboard – RMYC A to starboard - finish.

Course 59 + laps - Northerly

Distance 3.4nm



Start/Finish: RMYC Tower

Start – RMYC D to port – RMYC A to port – RMYC B to port – RMYC A to port - finish.

Course 60 - Northerly

Distance 6.9nm



Start/Finish: RMYC Tower

Start – RMYC D to port – RMYC C to port – RMYC B to port – RMYC A to port - RMYC B - finish.

Course 61 - Southerly

Distance 7.7nm



Start/Finish: Start/Finish – RMYC Tower

Start – RMYC B to starboard – RMYC C to starboard – RMYC D to starboard – RMYC A to starboard - RMYC B – RMYC A to starboard – RMYC D to starboard - finish.

RMYs Club Courses - Tower start/finish

Course 62 - Southerly

Distance 8.3nm



Start/Finish – RMYs Tower

Start – RMYs B to starboard – RMYs C to starboard – RMYs D to starboard – RMYs A to starboard - RMYs B to starboard – RMYs C to starboard – RMYs D to starboard - finish.

Course 63 - Northerly

Distance 8.3nm



Start/Finish: RMYs Tower

SSStart – RMYs D to port – RMYs C to port – RMYs B to port – RMYs A to port - RMYs D to port – RMYs C to port – RMYs B to port - finish.

Course 64 - Northerly

Distance 7.6nm



Start/Finish: RMYs Tower

Start – RMYs B to starboard – RMYs A to sStart – RMYs G to port – RMYs C to port – RMYs E to port – RMYs A to port - RMYs G to port – RMYs A to port – RMYs E to port - finish.

Course 65 - Southerly

Distance 10.3nm



Start/Finish: RMYs Tower

Start – RMYs R2 to starboard – RMYs C to starboard – RMYs D to starboard – RMYs A to starboard - RMYs B to starboard – RMYs A to starboard – RMYs D to starboard - finish.

Course 66 - Northerly

Distance 10.3nm



Start/Finish: RMYs Tower

Start – RMYs D to port – RMYs C to port – R2 to port – RMYs A to port - RMYs D to sport – RMYs A to port – RMYs B to port - finish.

Course 67 - Northerly

Distance 10.3nm



Start/Finish: Start/Finish – RMYs Tower

Start – RMYs D to port – Gellibrand Shoal Mk to starboard – P3 to port – R2 to port – R2 to port - finish.

RMYs Club Courses - Tower start/finish

Course 68 - Southerly

Distance 11.4nm



Start/Finish – RMYs Tower

Start – RMYs B to starboard – RMYs C to starboard – RMYs D to starboard – RMYs A to starboard – RMYs B to starboard – RMYs D to starboard – RMYs A to starboard – RMYs B to starboard – RMYs D to starboard – finish.

Course 69 - Northerly

Distance 11.4nm



Start/Finish: RMYs Tower

Start – RMYs D to port – RMYs C to port – RMYs B to port – RMYs A to port – RMYs D to port – RMYs B to port – RMYs A to port – RMYs D to port – RMYs B to port – finish.

Course 70 - Southerly

Distance 11.9nm

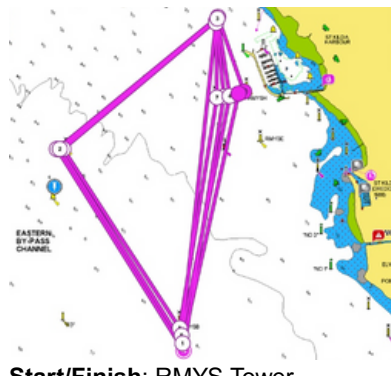


Start/Finish: RMYs Tower

Start – RMYs B to starboard – RMYs C to starboard – RMYs D to starboard – RMYs A to starboard – RMYs B to starboard – RMYs D to starboard – RMYs A to starboard – RMYs B to starboard – RMYs C to starboard – RMYC D to starboard – finish.

Course 71 - Northerly

Distance 11.9nm



Start/Finish: RMYs Tower

Start – RMYs D to port – RMYs C to port – RMYs B to port – RMYs A to port – RMYs D to port – RMYs B to port – RMYs A to port – RMYs D to port – RMYs C to port – RMYC B to port – finish.

Course 72 - Northerly

Distance 10.8nm

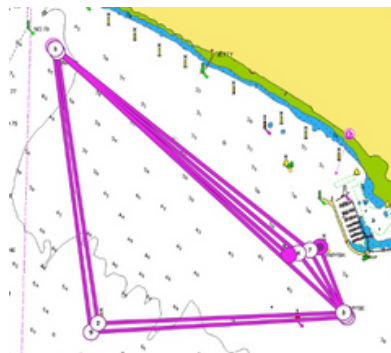


Start/Finish: RMYs Tower

Start – RMYs G to port – RMYs R2 to port – RMYs A to port – RMYs R3 to port – RMYs E to port – finish.
version 8.0

Course 73 - Northerly

Distance 11.6nm



Start/Finish: Start/Finish – RMYs Tower

Start – RMYs G to port – RMYs C to port – RMYs E to port – RMYs A to port – RMYs G to port – RMYs E to port – RMYs A to port – RMYs G to port – RMYs C to port – RMYs E to port – finish.

RMYS Club Courses - Tower start/finish

Course 74 - Southerly

Distance 13.0nm



Start/Finish – RMYs Tower

SStart – R3 to starboard – P3 to starboard –
Gellibrand Shoal Mk to port – RMYs D to starboard
- RMYs A to starboard – RMYs B to starboard –
RMYs C to starboard - RMYs D - finish.

Course 76 - Southerly

Distance 12.8nm

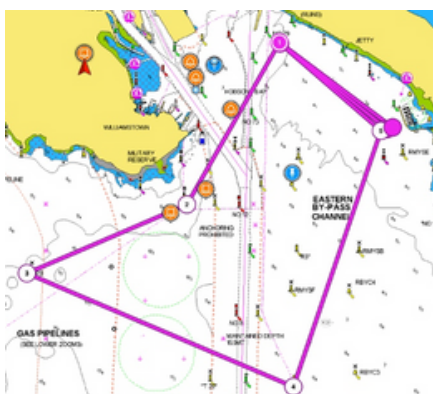


Start/Finish: RMYs Tower

Start – R2 to starboard – RMYs G to
starboard - RMYs A to starboard – R3 to
starboard - RMYs G to starboard - finish.

Course 78 - Northerly

Distance 13.7nm

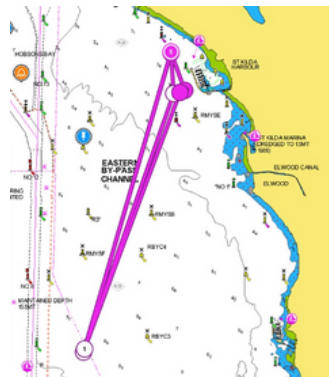


Start/Finish: RMYs Tower

Start – RMYs G to port – Gellibrand Shoal Mk
to starboard – P3 to port – R2 to port – RMYs
A to port – RMYs G to starboard - finish.

Course 75 - Southerly

Distance 11.4nm



Start/Finish: RMYs Tower

Start – R2 to starboard – RMYs D to starboard —
RMYs A to starboard – R2 to starboard - RMYs
D to starboard - finish.

Course 77 - Northerly

Distance 12.8nm



Start/Finish: RMYs Tower

Start – RMYs G to starboard - R2 to starboard -
RMYs A to starboard – RMYs G to starboard – R3
to starboard - finish.

Course 79 - Northerly

Distance 13.3nm



Start/Finish: Start/Finish – RMYs Tower

Start – RMYs G to port – R2 to port – RMYs A to
port – RMYs G to port – R3 to port - finish.

RMYs Club Courses - Tower start/finish

Course 80 - Southerly

Distance 13.3nm



Start/Finish – RMYs Tower

Start – R2 to starboard – RMYs A to starboard – R2 to starboard - RMYs G to starboard - finish.

Course 82 - Southerly

Distance 18.3nm



Start/Finish: RMYs Tower

Start – RMYs E to starboard – R2 to starboard – RMYs G to starboard - RMYs F to starboard - RMYs G to starboard – RMYs A to starboard – RMYs F to starboard - RMYs C to starboard – RMYs D to starboard - finish.

Course 88 - Southerly

Distance 20.6nm

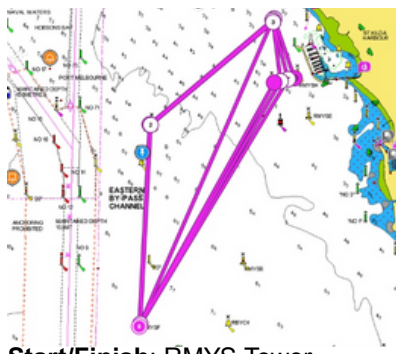


Start/Finish: RMYs Tower

Start – R2 to starboard – RMYs G to starboard – RMYs A to starboard – R2 to starboard - RMYs G to starboard – RMYs A to starboard – R3 to starboard - RMYs G to starboard - finish.
version 8.0

Course 81 - Southerly

Distance 15.0nm



Start/Finish: RMYs Tower

Start – RMYs F to starboard – RMYs C to starboard – RMYs D to starboard - RMYs A to starboard - RMYs F to starboard – RMYs D to starboard – RMYs A to starboard - RMYs F to starboard – RMYs C to starboard – RMYs D to starboard - finish.

Course 85 - Northerly

Distance 20.6nm

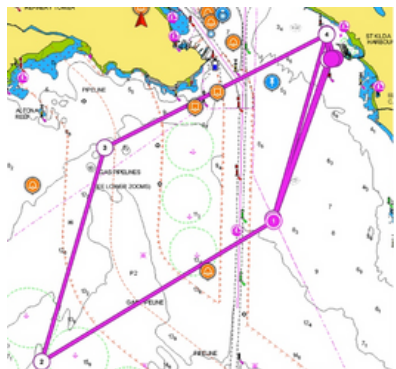


Start/Finish: RMYs Tower

Start – RMYs G to port – R2 to starboard – R2 to port - RMYs A to port - RMYs G to port R2 to port – RMYs A to port - RMYs G to port – R3 to port - finish.

Course 89 - Southerly

Distance 21.9nm



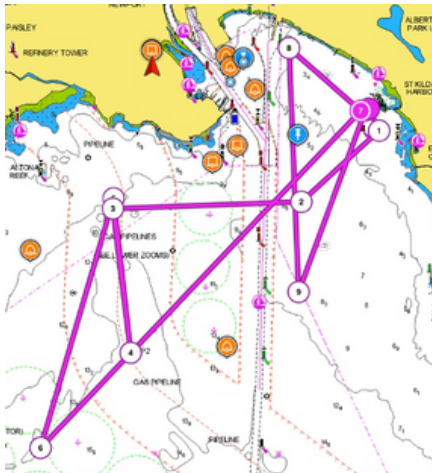
Start/Finish: Start/Finish – RMYs Tower

Start – R2 to starboard – Outer Anchorage to starboard – P3 to starboard – RMYs D to starboard - RMYs A to starboard – R2 to starboard – RMYs D to starboard - finish. .

RMYs Club Courses - Tower start/finish

Course 90 - Southerly

Distance 27.4nm

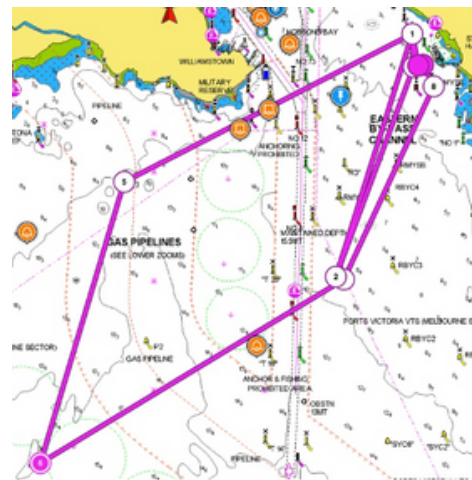


Start/Finish – RMYs Tower

Start – RMYs E to starboard – R3 to starboard – P3 to port – P2 to port – P3 to port – Outer Anchorage to port – RMYs A to port – RMYs G to port – R2 to port - finish.

Course 91 - Southerly

Distance 22.1nm



Start/Finish: RMYs Tower

Start – RMYs D to port – R2 to port – RMYs A to port – RMYs D to port – P3 to port – Outer Anchorage to port – R2 to port – RMYs E to port - finish.

Course 92 - Southerly

Distance nm














Start/Finish: RMYs Tower

Start – R2 to starboard – RMYs G to starboard – RMYs A to port – Outer Anchorage to port – P3 to port – P2 to port – P3 to port - R3 to port – RMYs E to port - finish.

RMYS Club Courses - Tower start/finish

Starting procedures for Squadron courses are outlined below, changing RRS26

The course number will be displayed in the Tower window or before the warning signal on the light tower.

signal	Lights	Number Display	sound
			
warning		-5	One signal
Preparatory		-4, -3, -2	One signal at 4 minutes only
One minute		60 (seconds countdown)	One long signal
Start		0	One signal
Individual Recall (pursuit)	FI.Y illuminated for 45 seconds max 		One signal
Individual Recall (combined)	FI.Y illuminated for 3 minutes max 		One signal
General Recall	FI.Y FI.R illuminated for 5 minutes 	rE	Two signals
Postpone ment		PO	Two signals
Abandoned		Ab	Three signals
Shorten course		SC	Two signals

Marks

The mark positions and descriptions are approximate and a guide only and must not be used for navigational purposes. Detailed locations of marks and features within Port Phillip are depicted on the relevant Charts AUS143, AUS154 and AUS155, as modified by Notices to Mariners.

A Mark

Laid mark set 250m south of Gellibrand Shoal Mark

Carrum #2		
Special Purpose Buoy	38 03.04S	145 04 52E
Centre Mark		
Special Purpose Buoy – X top mark	38 03.51S	144 52.21E
Channel 7 (Ch.7)		
Port of Melbourne Channel Pile	37 53.83S	144 55.72E
Channel 9 (Ch.9)		
Port of Melbourne Channel Pile	37 53.19S	144 55.75E
Channel 11 (Ch.11)		
Port of Melbourne Channel Pile	37 52.69S	144 55.76E
Channel 17a (Ch.17a)		
Port of Melbourne Channel Pile	37 51.54S	144 55.18E
Channel 19 (Ch.19)		
Port of Melbourne Channel Pile	37 51.48S	144 55.00E
Channel 71 (Ch.71)		
Port of Melbourne Channel Pile	37 52.06S	144 55.76E
Channel 72 (Ch.72)		
Port of Melbourne Channel Pile	37 51.72S	144 55.67E
Channel 73 (Ch.73)		
Port of Melbourne Channel Pile	37 51.72S	144 55.77E
Channel 74 (Ch.74)		
Port of Melbourne Channel Pile	37 51.30S	144 55.68E
Channel 75 (Ch.75)		
Port of Melbourne Channel Pile	37 51.29S	144 55.80E
Channel 76 (Ch.76)		
Port of Melbourne Channel Pile	37 51.09s	144 55.62E
Gellibrand Shoal Mark		
An East Cardinal Mark	37 52.56S,	144 54.90E
Outer Anchorage		
A pile with a light frame	37 56.91S	144 51.49E
P2		
A yellow buoy marked P2	37 55.46S	144 53.19E
P3		
A pile with light frame	37 53.38S	144 52.85E
Pt Cook East Cardinal Mark		
An East Cardinal Mark	37 55.58S	144 48.92E
Pt Cook Sanctuary Limit Mark		
Yellow special purpose beacon	37 55.74S	144 48.69E
Pt Cook South Pile		
Yellow Pile, top mark shape - X shape	37 55.74S	144 48.69E
R2		
Yellow light Buoy marked R2	37 54.54S	144 56.34E
R3		
Yellow light Buoy marked R3	37 53.10S	144 56.23E

R4		
Yellow Buoy located	37 50.70S,	144 55.36E
RMYS A		
A yellow Special Purpose Buoy	37 51.90S	144 57.47E
RMYS B		
A yellow Special Purpose Buoy	37 53.18S	144 57.20E
RMYS C		
A yellow Special Purpose Buoy	37 52.19S,	144 56.41E
RMYS D		
A yellow Special Purpose Buoy	37 51.48S,	144 57.47E
RMYS E		
A yellow Special Purpose Buoy	37 52.15S,	144 57.79E
RMYS F		
A yellow Special Purpose Buoy	37 53.59S	144 56.30E
RMYS G		
A yellow Special Purpose Buoy	37 51.000S	144 56.25E
SB3		
Special Purpose or General Buoy	37 52.48S	144 56.31E
Spoil Ground		
A yellow buoy	37 59.05S	144 53.05E
SYC 5		
Special Purpose Buoy – X top mark	37 58.81S	144 58.38E
T25		
Yellow Transit Lane Mark	37 52.48S	144 55.91E
T28		
Yellow Transit Lane Mark	37 52.31S	144 55.19E
Uniform		
RYCV laid mark	37 55.64S	144°54.97E
V Mark (Volvo Finish mark)		
Yellow Special Purpose Buoy	37 51.80S	144 55.50E
Xray		
RYCV laid mark	37 51.28S	144 54.97E
Zulu		
RYCV laid mark	37 54.20S	144 51.26E