



Sailing Information Presentation

21 September 2024

Agenda

- Eligibility
- Pre-Season preparation and TES
- Race Documents
- PPNYC (Port Phillip North YC)
- Independent Equipment Audits
- Calendar
- Race Series Information
- Crew Declaration and SailPass
- Weather, MOB, Solo Sailing Policies
- Race Officer/Land Officer Rosters
- Commercial Shipping
- Cruising
- Mentor Program
- Further Information



Eligibility

- Current insurance
- Completed an independent 'AS Equipment Audit'

Cat 6, 5 or 5N.

Cat 5 and 5N required for the long-distance series and N (if you intend to sail home post race)

- Practiced MOB procedure annually
- Submit MOB procedure annually
- Provide Race/Land Officer Assistance.



Pre-Season

To enable an easier path to submitting your pre-season documents

Use the following link

<https://hbyc.org.au/pre-season-declaration>

Under 'SAILING' on our website

- Insurance
- Equipment Audit
- MOB Practical
- MOB Procedure

Boat Owner's Declaration

This declaration is to ensure that all boat owners comply with the MOB and Safety audit requirements

* Required

Boat and Owner information

1

First Name *

Enter your answer

2

Last Name *

Enter your answer

3

Contact Number *

Enter your answer



A coalition of the Northern Clubs with an aim to promote great racing. As used in the recent HBYC Brass Monkey Series

Port Phillip North Yacht Clubs (PPNYC)

Aim

- build fleet numbers
- common handicaps across the three Clubs
- common race document clauses
- reduce Race Management loads
- free race entry to any event

PPNYC events

- John Neilson Long Distance
- Club Course Series (Saturday races)

enter via HBYC website

RYCV to do all PPNYC results with individual results generated from the consolidated results

Entry

Via the TopYacht Entry system (TES)

available via Racing/Results...

John Neilson Long Distance Series and Club Course Series will be hosted by the Port Phillip North Yacht Clubs (PPNYC)

If you enter -
Two-Handed. JN Long Distance and Club Course Series you will automatically be entered into the Club Aggregate

Club Course Series you are automatically entered into RYCV and RMYS Saturday Races



Hobsons Bay Yacht Club Season 2024/2025

October 2024 ~ August 2025

Create Entry / Update Entry / Add Crew....

STEP 1: Select Series

SERIES	
<input type="radio"/>	Chris Webb Two-Handed Series
<input type="radio"/>	Gunn & Co Thursday Twilight Pursuit Series
<input type="radio"/>	Club Course Series
<input type="radio"/>	John Neilson Long Distance Series
<input type="radio"/>	Next Generation Series
<input type="radio"/>	Shirley Freeman Trophy & Alice Varady Trophy
<input type="radio"/>	RM Smith Summer Pursuits
<input type="radio"/>	The Steam Packet Thursday Female Helm Pursuit
<input type="radio"/>	Weekend Female Helm Series

STEP 2: Select an Option

ENTRY OPTIONS	
<input type="radio"/>	Enter boat already in TopYacht Boat Register
<input type="radio"/>	Update existing entry details

Add a boat?

- I have purchased a boat; or
- I am now the co-owner of a boat; or
- I am now the manager of a boat.
- I am chartering a boat.

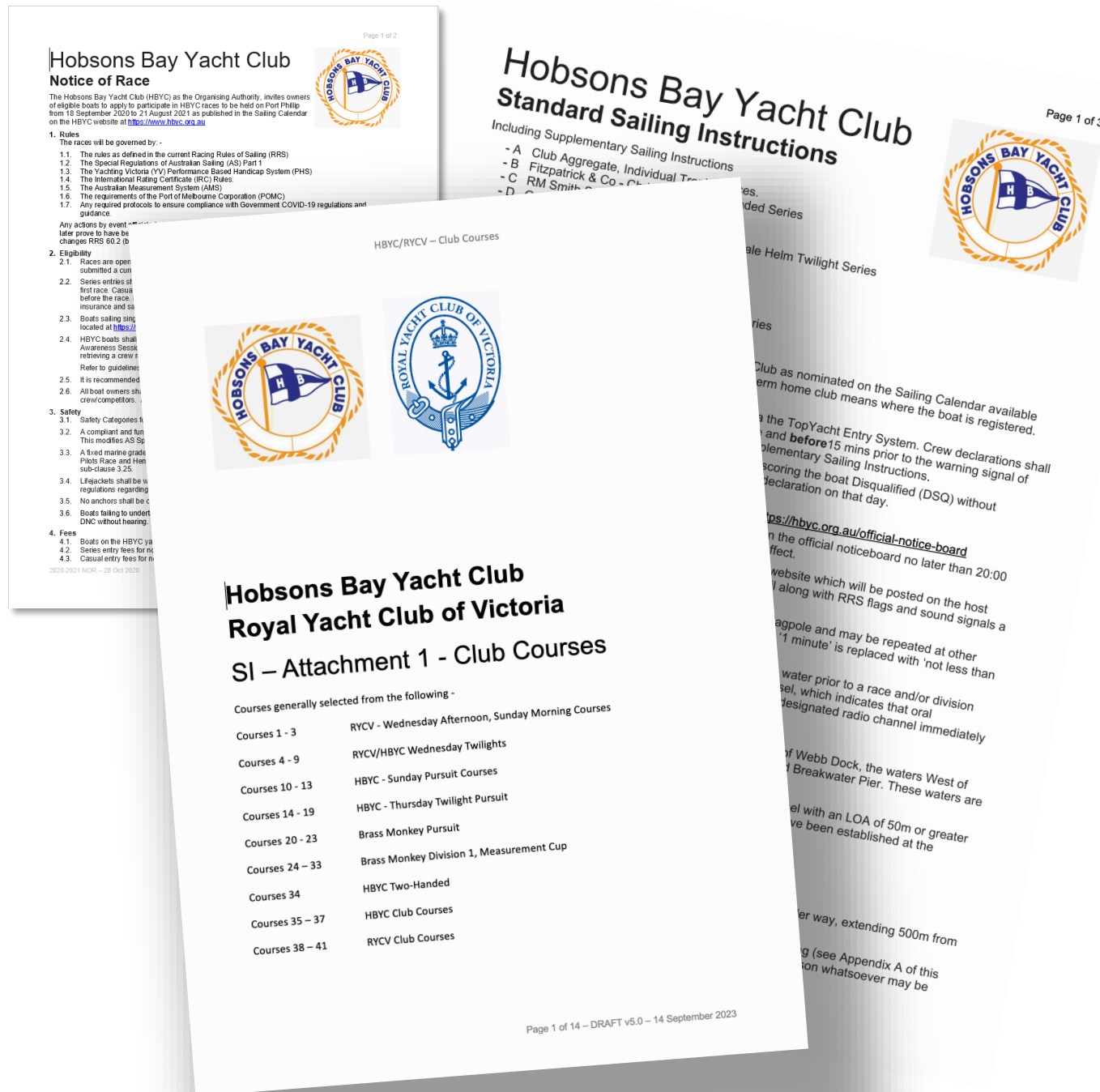
Add boat? [Click here.](#)

STEP 3: Press Submit

SUBMIT

Add/Update personal profile for THIS event (owners & offshore crew ONLY)

Find crew OR to register as crew available



Race Documents

Aligned with RYCV and RMYS.

Notice of Race

- Eligibility
- Event dates and times
- Policies

Standard Sailing Instructions (two pages)
specific Commercial Shipping notes

Supplementary SI's

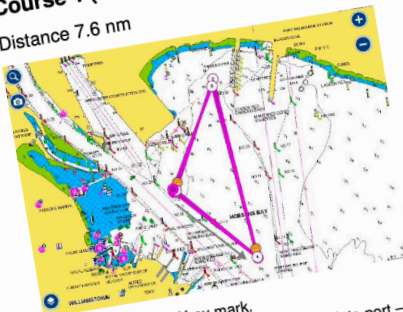
- race/series specific instructions
- trophies, prizes

SSI – Attachment 1 –
Combined Club Courses

Policies

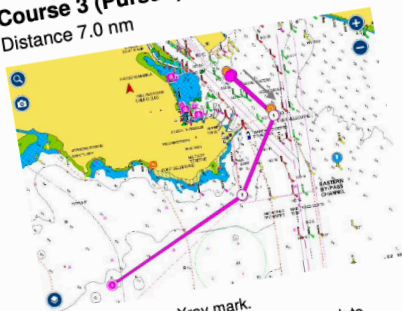
- Weather, MOB and Solo sailing

Course 1 (Pursuit) – Southerly
Distance 7.6 nm



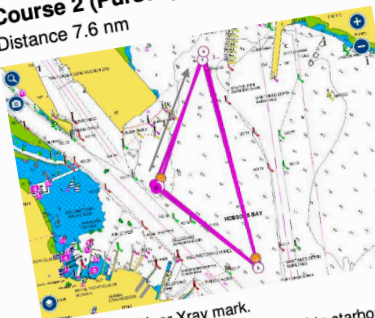
Start/Finish – Near Xray mark.
Start in a South-Easterly direction – V mark to port –
R4 to port – Xray to port – V mark to port – R4 to port –
Xray to port – V mark to port – R4 to port – finish.

Course 3 (Pursuit) – East/Westerly
Distance 7.0 nm



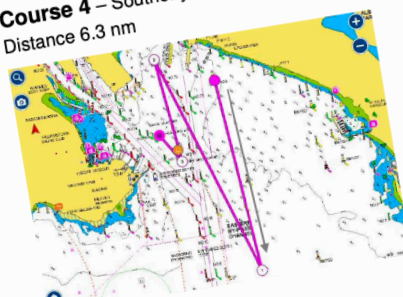
Start/Finish - Near Xray mark.
Start in a South-westerly direction – V mark to
starboard - Gellibrand Shoal mark to starboard – P3 to
starboard – Gellibrand Shoal mark to port – V mark to
port - finish.

Course 2 (Pursuit) – Northerly
Distance 7.6 nm



Start/Finish – Near Xray mark.
Start in a North-Easterly direction – R4 to starboard –
V mark to starboard – Xray to starboard – R4 to
starboard – V mark to starboard – Xray to starboard –
R4 to starboard – V mark to starboard - finish.

Course 4 – Southerly
Distance 6.3 nm



Start - Near RMYS G.
Finish – East Ch 17A
Start in a Southerly direction – east of passing marks
Ch 71, T25, T23 - R3 to starboard - east of bounding
marks T23, T25, Ch 71 – R4 to port – V mark to
starboard – finish.

SI Attachment 1 Club Courses

Shared document with RYCV

REVISED course numbers

- Chartlets
- Descriptions
- Approved by Ports Victoria

Calendar

First race The Inside Project – RM Smith
Summer Pursuit -1 October 2023

All our usual series races

Event hosts are shown with RYCV and RMYS hosting some events.

Available on the website and Club Calendar

pdf and excel versions

[illegible]



The Racing Rules of Sailing

2025-2028

sport / nature / technology



RRS Update

Will come into effect 1 January 2025

Published on our website

Changes not major

- Continuing Obstructions
- Sail the Course
- Avoiding Collisions
- Rounding Marks and Obstructions
- Protests

Independent Audit

Notice of Race requires that

It will be mandatory for an Independent Safety Audit to be undertaken prior to the boats first race for all Cat 5, 5N and 6 HBYC boats entering into HBYC events.

Any boat not undertaking/passing an independent audit will be disqualified from all previous results for the current season.



Club Aggregate

Seven Races for the Series:

- 3 x Long Distance Races
- 2 x Two Handed Races
- 2 x Club Courses

Be the best boat and crew in the Club...



RM Smith Summer Pursuit Series

Same format as last season

Six races for the Series

Bob Pilgrim Trophy (pursuit) - Race 4

Cock of Hobsons Bay (pursuit) - Race 5

Good series for novice crew/skipper,
uncrowded pursuit starts.

Non-Spinnaker

Safety Category 6



RYCV Wednesday Afternoon's

Same format as last season

26 races for the Summer Series

17 races for the Winter Series (RYCV Laura Gloria Trophy)

HBYC Endeavour Trophy (new winter and summer)

Safety Category 6



Two-Handed Series

Six races, two part of the Club Aggregate

- Bernie Kavanagh Trophy (PHS)
- Jessie Cup (AMS)
- Acrospire Trophy (PHS)

Traditional 18-mile course
Finish Line at Timeball Tower

Safety Category 5

PFD's must be worn – see NOR



Mech-n-Air/The Office, Frank Robinson Wednesday Twilights

Jointly hosted with Royal Yacht
Club Victoria.

Twenty-two race series.

Same as last year.

Safety Category 6

THE OFFICE
WILLIAMSTOWN

SPACES
THAT WORK
FOR YOU.

MECH-N-AIR
Construction & Access Equipment



‘Gunn & Co’ Thursday Twilights

Same format as last year

Pursuit races

Good series for novice
skippers and crew.

Uncrowded pursuit starts.

Non-Spinnaker

Safety Category 6

A photograph of several sailboats racing on the water during sunset. The sun is low on the horizon, creating a warm orange glow. The sailboats have white sails and dark hulls. Some sails have numbers and letters on them, such as '104H', 'H604', 'H365', and '4'. People are visible on the decks of the boats. In the background, there are some industrial structures and cranes.

GUNN&CO.
estate agents

‘The Steam Packet’ Thursday Twilights Female Helm

Pursuit races

The Steam Packet Twilight Trophy

Good series for novices, uncrowded
pursuit starts.

Non-Spinnaker

The background of the slide is a photograph of a white sailboat with a blue stripe along its hull. Two people are visible on the deck. The boat is on the water, and a city skyline is visible in the background under a cloudy sky.

 **Systems**

John Neilson Long-Distance Series

Five HBYC destination passage race series

Portarlington – Scotchmans Hill

Henry Press Trophy

Mornington

St Leonards

Wyndham Harbour

We will be joined by RYCV boats in their Livingston Cup Series

Cruiser are encouraged to follow the fleet and attend our traditional overnight stays.



Back to Base – SI requirement

It is MANDATORY to advise your intention to either stay overnight at the destination or return to a boats Home Club via a Text Message to the Race Mobile with an estimated ETA.

On arrival at your home Club advise via text message to the Race Mobile 0474 079 202.

Competitors are reminded returning to Hobsons Bay on the same day, that their boats must be adequately equipped to comply with night sailing as per the Australian Sailing Special Regulations.



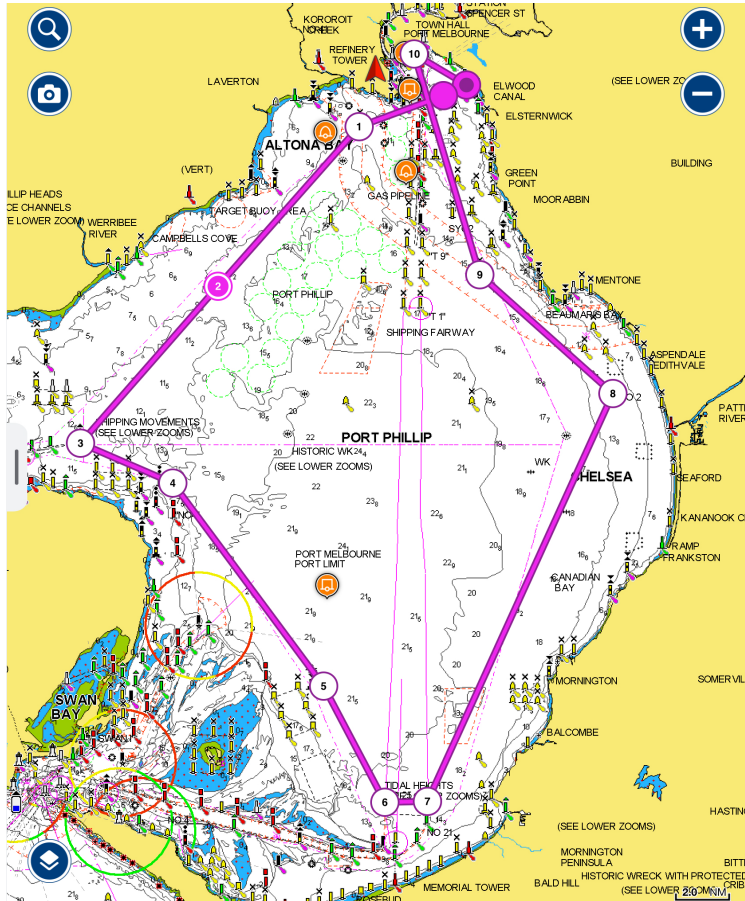
Port Phillip Sea Pilots

One race, around the Bay anti clockwise.

24 hour time limit

Starting late Saturday afternoon

All boats with 5N Safety Category encouraged



Association Cup

Keen to have a strong selection of boats to be able to represent HBYC at next years Association Cup

- two boats in AMS
- two boats in ORC

Encourage boats to enter and
practice, practice, practice.

- RYCV Windward – Leeward Series
- AS Range Series



Windward Leeward

RYCV are running four
windward/leeward race days.

Use this for getting you boat and
crew tuned up for the Association
Cup.

Together with the Australian
Sailing Range Series



Inter-Club Races

Plenty of 'Kindred Club' races with all levels of competition.

For example -

RYCV/RMYS - Trophy Races

ORCV Winter Bay Series

enter via the host clubs or email racing@hbyc.org.au.



Regatta's

Lipton Cup – RYCV – November

Cock of the Bay – ORCV - December

Petersville Regatta – BYS - December

Festival of Sail – RGYC - January

Sail Peninsula – SBYC - February



She Sails

Por Phillip Women's Championship Series

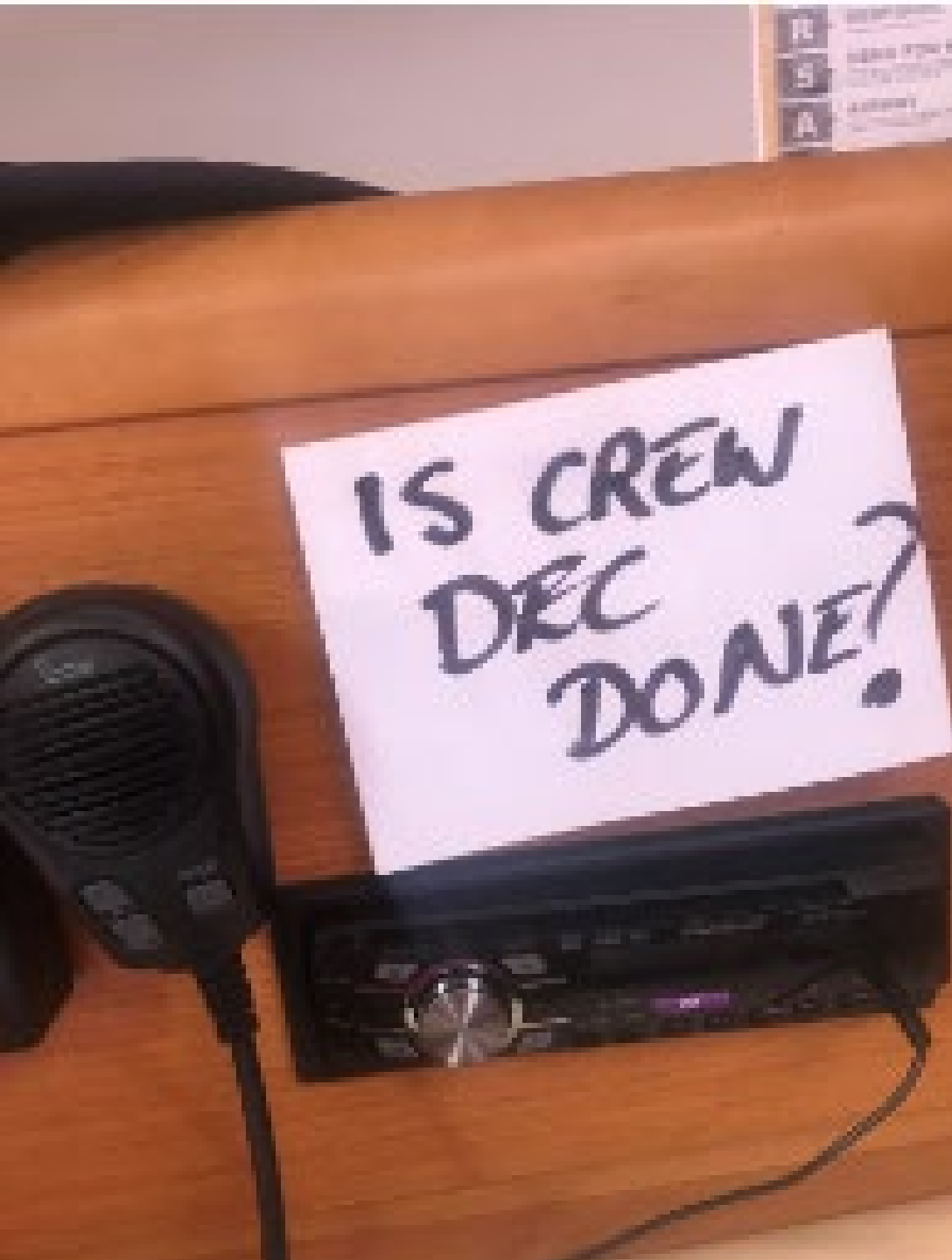
- HBYC Shirley Freeman Trophy
- RYCV Val Hodge Trophy
- SYC Women in sailing Challenge
- RMYS Jennifer Goldsmith Trophy
- RBYC Brighton Lady Skippers Series (BLISS)

Australian Women's Keelboat Regatta

Steampacket Hotel Thursday Twilight

Weekend Female Helm Series





Crew Declaration

TopYacht system

Register your Crew via phone

NEW SIGN ON

HBYC

<http://tymob.net.au/1826>

PPNYC

<http://tymob.net.au/1828>

Set up as a short cut on your phone

Crew declarations **MUST be completed** on the day of the race and **at least** 15 mins prior to the warning signal

Hobsons Bay Yacht Club – 2024/25 – QR Codes

HBYC Crew Declaration



PPNYC Crew Declaration



SailPass



HBYC Sailing Day Pass

- *Membership pathway*
- *Race Compliance*

A SailPass enables non-members to enjoy a day's sailing and utilise the club's facilities.

New Sailors - Australian Sailing Number, access to the clubhouse and a days' sailing

Skippers - Additional crew and compliance with Australian Sailing racing requirements.

The Benefits of SailPass Day Pass

- To go sailing and participate in keel boat racing at HBYC.
- To enjoy the after-race festivities and club facilities
- Personal Injury Insurance cover from Australian Sailing.
- Costs can be deducted from your HBYC membership fee.
- Ensures that the boat you are sailing on is meeting its race requirements

A Sail Pass link can be found on the website under SAILING.

Sail **PASS**





Man Overboard (MOB)

Mandatory as per Notice of Race

Complete and submit a written MOB procedure, **annually**.

Practice with the Club's floating dummy "Bob" at least once per season (Bob can be booked via the Club office).

All on the website

So, remember 'book Bob'

Solo Racing Policy

Advise race control of their intention to race.

VHF radio available **without leaving helm.**

Code flag Y flown from the backstay.

Shall **always wear a PDF** and be **tethered on via jack stays/jacklines.**

PLB will be required if single-handed night sailing ie back from a destination race.



Race, Land Officers

Assistance provided by each race boat as per the published roster.

Race Officer Assistant

The start boat will be mastered by the nominated Race Officer (RO) with assistance.

Land Officer

The Land Officer (LO) is responsible for monitoring both the race radio channel and emergency channel and to aid the 'on water' race officer if an incident takes place.



Cruising Rallies

New opportunities

- Family day Sails on a Sunday morning
- Organised Cruising to a destination

Guidelines, Instructions on the website

Note Weather, Solo Sailing and MOB Policies



Commercial Shipping

Standard Sailing Instructions are very specific regarding commercial shipping.

Local Rules require sail craft to keep out of the way of large ships.

Do not impede the safe passage of Commercial Vessel Shipping.
Pass at least 500m ahead of their bow.

If you think a conflict situation is possible maintain a diligent listening watch on the VTS working channel (Ch 12) and respond promptly as necessary to calls from large vessels or the VTS. If you're being hailed on the radio, there'll be a good reason for it, which will probably require your immediate attention.

One short blast – I am altering course to starboard (right).

Two short blasts – I am altering course to port (left).

Three short blasts – I am operating engines astern (stopping).

Five (or more) short blasts – I'm unsure of your intentions and I doubt whether you are taking enough avoiding action to avoid collision.

Ports Victoria can and will stop our events



Mentoring

- New program based upon learnings
- Increase participation
- Create Pathways for new sailors
- Connect aspiring sailors
- Share knowledge and resources





Volunteers

Come and help us, all welcome

- Race Officers
- Committee Boat,
- Drivers
- Race results
- Cooks and caterers
- Mentors



Further Information

Vice Commodore
David Gaylor

Stephen Cheney
racing@hbyc.org.au