

# Hobsons Bay Yacht Club

## Sailing Instructions



Including.

- Appendix A – Club Aggregate, Saturday Sprint Series, Individual Trophy Races
- Appendix B – Chris Webb Two-Handed Series
- Appendix C – RM Smith Summer Pursuit Series
- Appendix D – Raine and Horne Thursday Twilight Series
- Appendix E – John Neilson Long Distance Series
- Appendix F – Alaster Edwards Memorial Brass Monkey Series
- Appendix G – Sea Pilots Race

Attachment 1 - Marks

For Frank Robinson Wednesday Twilights, refer to Royal Yacht Club of Victoria for Notice of Race and Sailing Instructions.

### 1. Crew Declarations

- 1.1. It is mandatory that all boats register their Crew Declarations via the TopYacht Entry System. Crew declarations MUST be completed 15 mins prior to the warning signal of each race electronically via the following link - <http://tymob.net.au/1247>
- 1.2. Failure to do so may result in the Race Committee scoring the boat Disqualified (DSQ) without hearing. This changes RRS 63.1, A4 and A5.
- 1.3. For information on how to submit and utilize the above link refer to the 'How To' document located <https://www.hbyc.org.au/racing/general-info.html>

### 2. Notices to Competitors

- 2.1 Notices to competitors will be posted on the HBYC Website located at <https://www.hbyc.org.au/>
- 2.2 Competitors may be notified by SMS and/or email.

### 3. Changes to Sailing Instructions

- 3.1. Any change to the Sailing Instructions will be posted before 09:00 on the day it will take effect, except that any change to the schedule of races will be posted by 20:00 on the day before it will take effect.
- 3.2. Changes to the Sailing Instructions will be available at <https://www.hbyc.org.au/racing/general-info.html>

### 4. Signal Made Ashore

- 4.1. Signals made ashore will be displayed on the HBYC flagpole.
- 4.2. When flag AP is displayed ashore '1 minute' is replaced with 'not less than 45 minutes' in the race signal AP.

### 5. Racing Areas

Racing will be on Port Phillip.

### 6. The Start

- 6.1. Races will be started by using RRS 26 with the warning signal made five minutes before the starting signal.
- 6.2. The starting line may be a between a staff displaying an orange flag on the Race Committee Vessel at the starboard end and the course side of the 'port-end' starting mark, an orange cylindrical buoy or fixed mark.
- 6.3. A boat that does not start within 10 minutes after her starting signal will be scored Did Not Start (DNS) without a hearing. This changes RRS 63.1, A4 and A5.
- 6.4. Boats racing in 'Pursuit Races' shall not cross the start line between the Warning Signal and their start time. Boats that fail to comply may have three points added to her score without a hearing. This changes RRS 63.1, A4 and A5.

### 7. The Courses

- 1.1. All marks nominated other than passing marks are rounding marks
- 1.2. Courses shall be designated on the Race Committee Vessel by the corresponding numeral pennant.

## **8. Protests and Requests for Redress**

- 7.1. Protest forms are available from the HBYC website at <https://www.hbyc.org.au/racing/general-info.html>
- 7.2. Forms may be submitted in person or emailed to [racing@hbyc.org.au](mailto:racing@hbyc.org.au) by 12:00 on the next working day after the race.
- 7.3. Protests and Requests for Redress will generally be heard at HBYC at 19:00 on the Thursday following the race.

## **9. Safety Regulations**

- 8.1. Races will not be started if there is a current GALE warning for the waters of Port Phillip issued by the Bureau of Meteorology.
- 8.2. Racing will be abandoned if the Bureau of Meteorology issues a GALE warning for the waters of Port Phillip during the race.
- 8.3. A boat that retires from the race shall notify the Race Committee as soon as possible on the applicable VHF Channel (ref. Radio Communication).
- 8.4. A boat found to have interfered with commercial shipping shall be disqualified without a hearing. This changes RRS 63.1, A4 and A5.
- 8.5. A boat may use its engine to avoid commercial shipping but shall lodge details to the Race Committee at the finish line within one hour of finishing the race. A boat using its engine shall not benefit from the use of its engine. Any boat using its engine shall bring the boat to a complete stop before continuing the race. The Race Committee, as its discretion may allow such use with or without further penalty. This changes RRS 42.

## **10. Radio Communication**

- 9.1. Except in an emergency, a boat that is racing shall not make voice or data transmissions and shall not receive voice or data communication that is not available to all boats.
- 9.2. The Race Committee may make Race Management announcements on **VHF Channel 69** or as per appendices.

## **11. Further Information**

HBYC Sailing Administrator – Stephen Cheney: [racing@hbyc.org.au](mailto:racing@hbyc.org.au)

or

On Water Race Officer via **Race Mobile 0474 079 202**

## Appendix A:

---

### A1. Club Aggregate Series

#### A1.1. Format

Race 1, 3, 7, 8	HBYC John Neilson Long Distance Series Sailing Instructions (Appendix E)
Race 2, 4	HBYC Two-Handed Series Sailing Instructions (Appendix B)
Race 5	RYCV Harold Ward Trophy (HBYC Nick Mania Trophy). Refer to RYCV website for Sailing Instructions.
Race 6	RYCV Harold Ward Trophy (HBYC Commodore's Cup). Refer to RYCV website for Sailing Instructions.

HBYC registered Boats shall only be eligible for the Club Aggregate Series Trophy

#### A1.2. Class Flags

Division 1	Flag R
Division 2	Flag T

### A2. Saturday Sprint Series

#### A2.1. Format

Race 1	HBYC Saturday Race 1 (RYCV Lord Brassey Trophy) refer to SI Appendix A3 below.
Race 2	RYCV Awinya Cup. Refer to RYCV website for Sailing Instructions.
Race 3	RYCV Lord Forster Trophy. Refer to RYCV website for Sailing Instructions.
Race 4	RMYS Services Shield. Refer to RMYS website for Sailing Instructions.

### A3. Individual Trophy Races

- Commodore's Cup (Div 1)**
- Past Commodore's Cup (Div 2)**
- Nick Mania Trophy**
- Shirley Freeman Trophy (Div 1)**
- Division 2 Non-Spinnaker Trophy**

#### A3.1. Class Flags

HBYC Saturday Race 1	Division 1	Flag R
Commodore's Cup	Division 1	Flag R
Past Commodore's Cup	Division 2	Flag T
Shirley Freeman Trophy	Division 1	Flag R
La Mademoiselle Cup	Division 2	Flag T

#### A3.2. Starting Area

The starting line location is generally described below and in **Courses** below

HBYC Saturday Race 1, Commodores/Past Commodores Cup Shirley Freeman Trophy Division 2, non-spinnaker	Start location to East of Channel
Nick Mania Trophy	Start location adjacent to Gellibrand Shoal Mark.

#### A3.3. The Courses

- 3.3.1. Refer to the 'Marks' document attachment 1
- 3.3.2. Competitors should be aware of the shipping movements that can occur at any time and are reminded to keep clear of shipping within Hobsons Bay and the Williamstown and Port Melbourne Channels.
- 3.3.3. While Channel 71, 11, 9 and Transit Marks T20 to T26 are not marks of the course in terms of RRS 28.1, these are **passing** marks under RRS 28.2 and therefore have a required side as indicated in

the course descriptions below. These are intended to reduce the potential for competitors to interfere with shipping using the channels.

**Course 1** Southerly, Start/Finish: West of Ch 74.

Start in a southerly direction - pass east of bounding marks Ch 71, 11, 9 and 7 - R2 to port - pass east of bounding marks Ch 7, 9, 11 and 71 - RMYS G to port - pass east of bounding marks Ch 71, 11, and 9 - R3 to starboard - pass east of bounding marks Ch 11 and 71 - finish.

**Course 2** Southerly Short Course, Start/Finish: West of Channel 74.

Start in a southerly direction - pass to east of bounding marks Ch 71, 11 and 9 - R2 to port - RMYS B to port, pass to east of bounding marks Ch 11 and 71 - finish.

**Course 3** South Easterly, Start/Finish: West of Ch 78

Start in a south easterly direction - east of bounding mark Ch 71 - RMYS B to port - east of bounding mark Ch 71 - R4 to port, east of bounding mark 71 - RMYS C to port - R4 to port - finish.

**Course 4** South Easterly Short Course, Start/Finish: West of Channel 78

Start in a south easterly direction - east of bounding mark Ch 71 - RMYS C to port - east of bounding mark Ch 71 - R4 to port - east of bounding mark Ch 71 - RMYS C to port - R4 to port - finish.

**Course 5** Northerly, Start/Finish: West of Ch 72

Start in a northerly direction - R4 to starboard - east of bounding marks Ch 71 and 11, 9 and 7 - R2 to port - east of bounding mark Ch 7, 9, 11 and 71 - RMYS G to port - east of bounding marks Ch 71 and 11 - R3 to starboard - east of bounding marks Ch 11, and 71 - finish.

**Course 6** Northerly Short Course, Start/Finish: West of Channel 72

Start in a northerly direction - R4 to starboard - east of bounding marks Ch 71 and 11, 9 and 7 - R2 to port - east of bounding mark Ch 7 - through a gate between Ch 9 and R3 - east of bounding marks Ch 11, and 71 - finish.

**Course 7** South Westerly, Start/Finish: East of Ch 75

Start in a south westerly direction - Gellibrand Shoal Mark to starboard - P2 to port - RMYS G to port - finish.

**Course 8** South Westerly Short Course, Start/Finish: East of Ch 75

Start in a south westerly direction - Gellibrand Shoal Mark to starboard - P3 to port - RMYS G to port - finish.

**Course 9** Easterly, Start/Finish: East of Ch 73

Start in an easterly direction - RMYS A to starboard - R3 to starboard - P3 to port - R3 to port - east of bounding mark Ch 11 and Ch 71 - finish.

**Course 10** Easterly Short Course, Start/Finish: East of Ch 73

Start in an easterly direction - RMYS A to starboard - R3 to starboard - east of bounding Marks Ch 11 and 71 - Ch 73 to starboard - RMYS A to starboard - RMYS C to starboard - finish.

**Course 11** Westerly, Start/Finish: East of Ch 73

Start in a westerly direction - 17A to port - RMYS B to starboard - P3 to starboard - R3 to port - east of bounding marks Ch 11 and Ch 71 - finish.

**Course 12** Westerly Short Course, Start/Finish: East of Ch 73

Start in a westerly direction - 17A to port - RMYS A to port - Ch 17A to port - RMYS C to port - finish.

**Course 13** North Westerly, Start/ Finish: Vicinity of RMYS C Mark

Start in a North westerly direction - R4 to port - V mark to port - RMYS B to port - east of bounding mark Ch 71 - R4 to port - finish.

**Course 14** Long Southerly, Start: West of Ch 74.

Start in a southerly direction - east of bounding marks Ch 71, 11, 9 and 7 - R2 to starboard - Spoil Ground to starboard - east of bounding mark Gellibrand Shoal Mark - HBYC Club House finish.

**Course 15** Long South Easterly, Start: West of Channel 74

Start in a south easterly direction - east of bounding mark Ch 71, RMYS B to starboard - P3 to port - Transit Mark T16 to port - west of bounding marks Transit Marks T20 to T26 - east of bounding mark Gellibrand Shoal Mark - HBYC Club House finish.

**Course 16** Long Northerly, Start: Vicinity of V mark

Start in a northerly direction - R4 to starboard - east of bounding marks Ch 71 and 11 - R3 to starboard - Spoil Ground to starboard - east of bounding mark Gellibrand Shoal Mark - HBYC Club House finish.

**Course 17** Long South Westerly, Start: Vicinity of RMYS C mark

Start in a south westerly direction - Gellibrand Shoal Mark to starboard, - P2 to port - Gellibrand Shoal Mark to port - RMYS C to port - Gellibrand Shoal Mark to starboard - P3 to port - Gellibrand Shoal Mark to port - HBYC Club House finish.

**Course 18** Long Westerly, Start: East of Channel 75

Start in a westerly direction - Ch 19A to port, RMYS B to starboard, P3 to port, RMYS B to port, P3 to starboard, east of the bounding mark Gellibrand Shoal Mark, then to HBYC Club House.

**Course 19** Long Easterly, Start: South of RMYS C

Start in a westerly direction - east of passing mark Gellibrand Shoal Mark - P3 to port - RMYS B to port - P3 to starboard - east of Gellibrand Shoal Mark - HBYC Club House finish.

**Course 20** South Westerly, Start/Finish: Within 200 meters S.E. of Gellibrand Shoal Mark.

Start in a south westerly direction - east of bounding mark Pt Cook East Cardinal Mark - Pt Cook South Pile to port - finish.

**Course 21** Southerly, Start/Finish: Within 200 meters S.W. of Gellibrand Shoal Mark.

Start in a southerly direction - Outer Anchorage to starboard - P3 to starboard - finish.

**Course 22** South Easterly, Start/Finish: Within 200 meters S.W. of Gellibrand Shoal Mark.

Start in South Easterly direction - R2 to starboard - P3 to Port - P2 to port - finish.

**Course 23** Northerly, Start/Finish: Within 300 meters South of Gellibrand Shoal Mark.

Start in a northerly direction - A Mark to Port - Outer Anchorage to starboard - finish.

**Course 24** Northerly, Start/Finish: Within 300 meters South of Gellibrand Shoal Mark.

Start in a northerly direction - A Mark to Port - P2 to starboard - P3 to starboard - P2 to port - finish.

**Course 25** Easterly, Start/Finish: Within 700 meters S.W. of Gellibrand Shoal Mark.

Start in an Easterly direction - R3 to starboard - P3 to port - R3 to port - P3 to starboard - finish.

**Course 26** Westerly, Start/Finish: Within 800 meters S.E. of Gellibrand Shoal Mark.

Start in a Westerly direction - P3 to port - R3 to port - P3 to starboard – finish

**A3.4. The Finish**

The finishing line will be between the staff displaying a blue flag on the Race Committee Vessel at the starboard end and the course side of the 'port end' finishing mark an orange buoy or nearby fixed mark.

**A3.5. Time Limit**

The time limit for the first boat to sail the Course and Finish shall be 17:00. If no boat finishes within the time limit the race shall be abandoned. Boats still racing after 20:00 shall be scored Did Not Finish (DNF) without a hearing. This changes RRS 35, 63.1, A4 and A5.

**A3.6. Prizes**

**Commodore's/Past Commodore's Cup**

The first placed HBYC boat in Division 1 (PHS) shall be given the Commodore's Cup.

The first placed HBYC boat in Division 2 (PHS) shall be given the Past Commodore's Trophy.

**Nick Mania Trophy**

The first placed HBYC boat (PHS) shall be given the Nick Mania Trophy.

**Shirley Freeman Trophy, Division 2 Cup**

The first placed boat in PHS Division 1 (PHS) shall be given the Shirley Freeman Trophy.

The first placed HBYC boat in Division 1 (PHS) shall be given the Lady Skippers Trophy

The first placed boat in Division 2 shall be given the La Mademoiselle Cup

Additional prizes may be given at the discretion of Hobsons Bay Yacht Club.

## Appendix B:

---

### Chris Webb Two-Handed Series

#### B1. Rules

The use of self-steering is permitted. This changes RRS 52.

#### B2. Class Flags

Combined Fleet                      Flag R

#### B3. The Courses

Refer to the 'Marks' document attachment 1

##### Course 1. Start in the vicinity of Ch 71

Start in a Southerly direction - Gellibrand Shoal Mark to starboard - Outer Anchorage to port - Spoil Ground to Port - HBYC Club House finish.

##### Course 2. Start in the vicinity of Ch 71

Round windward yellow mark to starboard - Gellibrand Shoal Mark to starboard - Outer Anchorage to port - Spoil Ground to Port - HBYC Club House finish.

##### Course 3. Start in the vicinity of Ch 71

Round windward yellow mark to port - Gellibrand Shoal Mark to starboard - Outer Anchorage to port - Spoil Ground to Port - HBYC Club House finish.

#### B4. The Finish

**Competitors shall notify the Race Officer as they approach the Williamstown Breakwater on the applicable VHF Channel (ref. Radio Communication in Sailing Instructions 9.0)**

Competitors are advised to also record their own Finish Times

#### B5. Time Limit

The time limit for the first boat to sail the Course and Finish shall be 17:00. If no boat finishes within the time limit the race shall be abandoned. Boats still racing after 18:00 shall be scored Did Not Finish (DNF) without a hearing. This changes RRS 35, A4 and A5

#### B6. Safety

**It is compulsory for all crew to wear Life Jackets at all times during Two-Handed races.**

#### B7. Prizes

**The Bernie Kavanaugh Trophy and the Acrospire Trophy (refer Sailing Calendar for relevant races) shall be given to the first boat on PHS entered into the Two-Handed Series.**

A Two-Handed Series Trophy shall be given to the first boat in each PHS, AMS and IRC Divisions.

Additional prizes may be given at the discretion of Hobsons Bay Yacht Club

## Appendix C:

### RM Smith Summer Pursuit Series

#### C1. Class Flags.

Combined Fleet

Flag R

#### C2. The Courses

C2.1. Refer to the 'Marks' document attachment 1

C2.2. Competitors should be aware of the shipping movements that can occur at any time and are reminded to keep clear of shipping within Hobsons Bay and the Williamstown and Port Melbourne Channels.

C2.3. While Channel 71, 11, 9 and Transit Marks T20 to T26 are not marks of the course in terms of RRS 28.1, these are **passing** marks under RRS 28.2 and therefore have a required side as indicated in the course descriptions below. These are intended to reduce the potential for competitors to interfere with shipping using the channels.

**Course No. 1.** Southerly/South Easterly – approx 6.9 nautical miles.

Start/Finish - In the vicinity of Ch 74.

Start in a Southerly direction - east of bounding marks Ch. 71, 11, 9 and 7 - RMYS F to port - RMYS A to port - R4 to port - finish.

**Course No. 2.** South Westerly – approximately 7.2 nautical miles.

Start/Finish - In the vicinity of Ch 75.

Start in a S.W. direction - Ch.72 to Port - RMYS A to starboard - R3 to starboard - east of bounding marks Ch 9, 11 and 71 - R4 to starboard, finish.

**Course No 3** Northerly – approximately 7.1 nautical miles.

Start/Finish - In the vicinity of Ch 74.

Start in a Northerly direction - R4 to starboard - RMYS A to starboard - RMYS F to starboard, east of bounding marks Ch. 7, 9, 11 and 71 - finish.

**Course No. 4** Easterly – approximately 7.0 nautical miles.

Start/Finish - In the vicinity of Ch 74.

Start in an Easterly direction - RMYS A to starboard - RMYS F to starboard - east of bounding marks Ch. 7, 9, 11 and 71 - R4 to starboard - finish.

**Course No.5** Westerly – approximately 7.1 nautical miles.

Start/Finish - In the vicinity of Ch 74.

Start in a north westerly direction - R4 to Port - east of bounding marks Ch 71, 11, 9 and 7 - RMYS F to Port - RMYS A to port - finish.

**Course No 6** Southerly – approximately 7.5 nautical miles

Start/Finish between the Start Boat and the V mark.

Start in a Southerly direction - east of bounding Ch Marks 71, 11, 9, 7 and 5 - R2 to port - east of bounding marks Ch.7,9, 11 and 71 - RMYS G to port - finish.

**Course No. 7** Northerly – approximately 7.2 nautical miles

Start/Finish between the Start Boat and the V mark.

Start in a northerly direction - R4 to starboard, east of bounding marks Ch.71, 11,9 and Ch.7 - R2 to port, - east of bounding marks Channel 7.9, 11 and 71 - finish.

**Course No. 8** Easterly/Westerly – approximately 7.1 nautical miles

Start/Finish between the Start Boat and the V mark

Start in an Easterly direction - RMYS A to port - Ch 74 to starboard - RMYS G to port - R4 to port - finish.

#### C3. The Start

The start location is course dependent, generally to the east of the main Shipping Channel.

The start time for each group is an expression of time in minutes after the primary starting signal and shall be displayed at two-minute intervals. The start for the group indicated by the numeral is signaled by the removing of the numeral.

When 'Pursuit Race' starts apply a boat's preparatory signal is **deemed made** four minutes before the boat's starting time. **Note: Flag "P" will not be displayed.**

The starting procedure is as follows and continues through each group

Signal	Flag/Numeral Displayed	Sound	Minutes
Warning	Numeral Zero Displayed	1 Sound	-5
Primary Start	Numeral Zero Removed Numerical Two Displayed	1 Sound	0
	Numeral Two Removed Numerical Four Displayed	1 Sound	2
	Numeral Four Removed Numerical Six Displayed	1 Sound	4

**C4. The Finish**

The finishing line will be between the staff displaying a blue flag on the Race Committee Vessel at the starboard end and the course side of the 'port end' finishing mark an orange buoy or nearby fixed mark.

**C5. Time Limit**

The time limit is 16:30.

If no boat finishes within the time limit the race shall be abandoned. Boats still racing after 18:30 shall be scored Did Not Finish (DNF) without a hearing. This changes RRS 35, A4 and A5.

**C6. Prizes**

The RM Smith Series Trophy shall be given to the first boat (PHS) in the series.

The Bob Pilgrim Memorial Trophy (refer Sailing Calendar) shall be given to the first boat to finish in that race.

The Cock of Hobsons Bay Trophy (refer Sailing Calendar) shall be given to the first boat to finish in that race.

Additional prizes may be given at the discretion of Hobsons Bay Yacht Club.



## Appendix D:

# Raine & Horne®

## Thursday Twilight Series Pursuit Series

### D1. Class Flags

Combined Fleet                      Flag R

### D2. The Course

Refer to the 'Marks' document attachment 1

**Course No. 1.** Southerly – approx. 5.3 nautical miles. (No Cruise Boat)

Start/Finish - between the Committee Boat and R4.

Start in a Southerly direction - V to port - Ch.74 to port - R4 to port - V to port - Ch.74 to port - finish.

**Course No 2.** Northerly – approx. 5.3 nautical miles. (No Cruise Boat)

Start/Finish - between the Committee boat and V Mark.

Start in a Northerly direction, - R4 to starboard - Ch.74 to starboard - V to starboard - R4 to starboard - Ch.74 to starboard - finish.

**Course No. 3** Easterly – approx. 4.7 nautical miles.(No Cruise Boat)

Start/Finish – between Committee Boat and V mark.

Start in an Easterly direction - RMYS A to port - R4 to port - finish.

**Course No.4 Westerly** – approx. 4.6 nautical miles. (No Cruise Boat)

Start - between Committee boat and Ch.72.

Finish between Committee Boat and R4

Start in a westerly direction, 17A to port - RMYS A to port - finish.

**Course No.5** East/Westerly – approx. 5.5 nautical miles. (Cruise Boat dep

Start/Finish between orange mark and Committee boat 100 meters east of Ch. 75

Start in an Easterly direction - RMYS D to port - RMYS G to port, through start/finish line gate, RMYS D to port - RMYS G to port - finish.

**Course No. 6.** Southerly – approx. 4.9 nautical miles. (Cruise Boat dep)

Start - between the Committee Boat and R4

Finish- between the Committee Boat and V

Start in a Southerly direction - V to port - R4 to port - V to port - R4 to port - finish.

(Maybe shortened at R4)

**Course No 7. Northerly** – approx. 4.9 nautical miles. (Cruise Boat dep)

Start - between the Committee Boat and V

Finish- between the Committee boat and R4.

Start in a Northerly direction - R4 starboard - V to starboard - R4 to starboard - V to starboard - finish. (Maybe shortened at V)

**Course No. 8 South Westerly** – approx 5.4 nautical Miles (Cruise Boat dep)

Start/Finish – between the Committee Boat and R4

Start in a S.W. direction - Ch. 21 to port - Ch.78 to starboard - 17A to port - V to Port - Ch.78 to port - Ch.19A to starboard - finish.

**Course No. 9** South Westerly – approx 5.9 nautical miles (No Cruise Boat)

Start/Finish- between the Committee Boat and RMYS G

Start in a S.W. direction - V to starboard - Ch.74 to starboard-RMYS G to starboard - Ch.74 to starboard - finish.

### D3. The Start

The start line is course dependent, but generally to the east of the main Shipping Channel

The start time for each group is an expression of time in minutes after the primary starting signal and shall be displayed at two-minute intervals. The start for the group indicated by the numeral is signaled by the removing of the numeral.

When 'Pursuit Race' starts apply a boat's preparatory signal is **deemed made** four minutes before the boat's starting time. **Note: Flag "P" will not be displayed.**

The starting procedure is as follows and continues through each group:

Signal	Flag/Numeral Displayed	Sound	Minutes
Warning	Numeral Zero Displayed	1 Sound	-5
Primary Start	Numeral Zero Removed Numerals Two Displayed	1 Sound	0
	Numerals Two Removed Numerals Four Displayed	1 Sound	2
	Numerals Four Removed Numerals Six Displayed	1 Sound	4

**D4. The Finish**

The finishing line will be between the staff displaying a blue flag on the Race Committee Vessel at the starboard end and the course side of the 'port end' finishing mark an orange buoy or nearby fixed mark.

**D5. Time Limit**

The time limit for the first boat to sail the course and finish shall be Nautical Twilight. If no boat finishes within the time limit the race shall be abandoned. Boats still racing after Nautical Twilight shall be scored Did Not Finish (DNF) without a hearing. This changes RRS 35, A4 and A5.

**D6. Prizes**

The first placed boat (PHS) across the series shall be given the Raine & Horne Twilight Series Trophy.

The first placed boat in the Pre and Post-Christmas Series shall be given a Trophy.

Additional prizes may be given at the discretion of Hobsons Bay Yacht Club.

## Appendix E:

### John Neilson Long Distance Series

#### E1. Format

Race 1	Portarlington Passage Race
Race 2	Wyndham Harbour Passage Race (Vice Commodore's Cup)
Race 3	Mornington Passage Race
Race 4	St Leonards Passage Race

#### E2. Class Flags

Combined Fleet	Flag R
----------------	--------

#### E3. Sign On (Long Distance/Passage Races Only)

In addition to the mandatory TopYacht Crew Declaration the Race Committee shall call each boat in alphabetical order on the designated radio channel approx. one hour prior to start.

The Race Committee may protest boat's failing to respond to compulsory sign on.

When called, boats shall respond with boat name and number of persons on board

Vessel	Example
Race Committee	Esprit
Esprit	Esprit racing. 5 POB
Race Committee	Acknowledged Esprit

#### E4. The Courses

##### E4.1. Portarlington Passage Race

E4.1.1. Refer to the 'Marks' document attachment 1

E4.1.2. Start Vicinity of Ch Mark 71 or west of Ch Mark 76  
 Gellibrand Shoal Mark To starboard,  
 Finish Portarlington Pier

E4.1.3. Finish

The finishing line shall be between the staff displaying a blue flag on the Race Committee Vessel which may be situated approximately 100m from the north-west corner of the Portarlington pier.

Alternatively, Race Officials may finish the race from Portarlington Pier displaying a blue flag indicating a virtual line extending 100 metres from the north-western corner of the pier on a bearing of approximately 315 degrees. See Diagram 1 below

On approaching the jetty (200 metres) call on the applicable VHF Channel (ref. Radio Communication in Sailing Instructions 9.0) to confirm boat name and sail number.

After 19:00, or in the event there are no race officials are on station, boats must record their own time and SMS time to the Race mobile (ref. Sailing Instruction 10.0)

Competitors should standardise their watches using the local time displayed on a GPS.

**BE AWARE THERE IS A BOATING EXCLUSION ZONE TO THE SOUTH-WEST OF THE FINISHING LINE**

Diagram 1



## E4.2. Wyndham Harbour Passage Race (Vice Commodore's Cup)

E4.2.1. Refer to the 'Marks' document attachment 1

E4.2.2. Start location – vicinity of Ch 73

### Course 1 Northerly - approximately 24.8 nautical miles

Start in a northerly direction - RMYS G to starboard - R3 to starboard - Outer Anchorage to port - R2 to port - Outer Anchorage to starboard - finish.

### Course 2 Northerly - approximately 19.8 nautical miles

Start in a northerly direction - RMYS G to starboard - R3 to starboard - Outer Anchorage to starboard - P2 to starboard - Outer Anchorage to starboard - finish.

### Course 3 Southerly - approximately 23.2 nautical miles

Start in a southerly direction - Gellibrand Shoal Mark to starboard - P3 to port - P2 to starboard - Outer Anchorage to starboard - R2 to starboard - Outer Anchorage to starboard - finish.

### Course 4 Southerly - approximately 17.6 nautical miles

Start in a southerly direction - Gellibrand Shoal Mark to starboard - Outer Anchorage to port - P2 to starboard - Outer Anchorage to starboard - finish.

### Course 5 South Easterly - approximately 20.0 nautical miles

Start in a South Easterly direction - RMYS B to starboard - P3 to port - R2 to starboard - Outer Anchorage to starboard - finish.

### Course 6 East/West - approximately 20.7 nautical miles

Start: Start in an Easterly direction - RMYS A to starboard, - R3 to starboard - P3 to port - R2 to starboard - Outer Anchorage to starboard - finish.

### Finish

The finishing line shall be between the staff displaying a blue flag on the Race Committee Vessel which may be situated approximately 100m from the eastern corner of the Wyndham Harbour breakwater (a bearing of approximately 140 degrees).

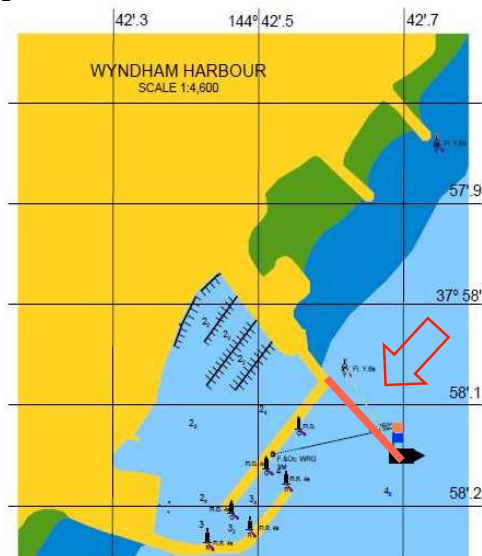
Alternatively, Race Officials may finish the race from the Wyndham Harbour breakwater, displaying a blue flag indicating a virtual line extending 100 metres from the eastern corner of the breakwater on a bearing of approximately 140 degrees. See Diagram 2 below

On approach (200 metres) call on the applicable VHF Channel (ref. Radio Communication in Sailing Instructions 9.0) to confirm boat name and sail number.

After 19:00, or in the event there are no race officials, boats must take record their own time and SMS time to the Race mobile (ref. Sailing Instruction 10.0)

Competitors should standardise their watches using the local time displayed on a GPS.

Diagram 2



### E4.3. Morningside Passage Race

- E4.3.1. Refer to the 'Marks' document attachment 1
- E4.3.2. Start Vicinity of Ch Mark 71  
Proceed in a Southerly direction
- Finish Morningside Pier

The finishing line shall be a line between a black line on a yellow disc on the north east face of the Morningside Yacht Club (MYC) Tower and the MYC finish mark, an orange barrel buoy which is outside the harbour limits and located approximately 275 metres east north - east of the Morningside Pier Light.

See Diagram 3 attached

Boats crossing an extension of the finish line inside the Harbour Limit Clearance Buoy (Orange) shall be scored Did Not Finish (DNF) without hearing. This changes RRS 63.1, A4 and A5.

The Harbour Limit Clearance Buoy must be left to starboard.

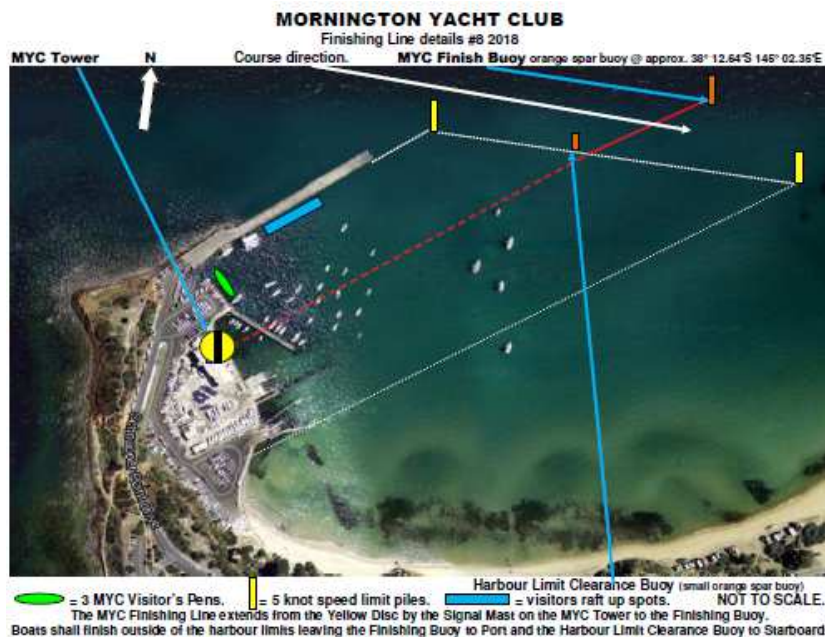
Boats shall finish in a south easterly direction between the Finish mark (leave to port) and the race control tower.

Boats are requested to record their own times when finishing then check with officials of the Morningside Yacht Club. The Tower at Morningside Yacht Club will be manned until 19:00 hours.

Boats finishing after this time shall record their own times and SMS their finishing times to the Race Mobile (ref. Sailing Instruction 10.0)

Competitors should standardise their watches using the local time displayed on a GPS.

Diagram 3



**E4.4. St Leonards Passage Race**

E4.4.1. Refer to the 'Marks' document attachment 1

E4.4.2. Start Vicinity of Ch Mark 71  
 Gellibrand Shoal Mark To starboard  
 Finish St Leonards Pier

The finishing line shall be between the staff displaying a blue flag on the Race Committee Vessel which may be situated approximately 200m from the eastern corner of the St Leonards Pier on a bearing of approximately 90 degrees.

Alternatively, Race Officials may finish the race from the St Leonards Pier, displaying a blue flag with a virtual line extending 200 metres from the north-eastern corner of the Pier on a bearing of approximately 90 degrees.

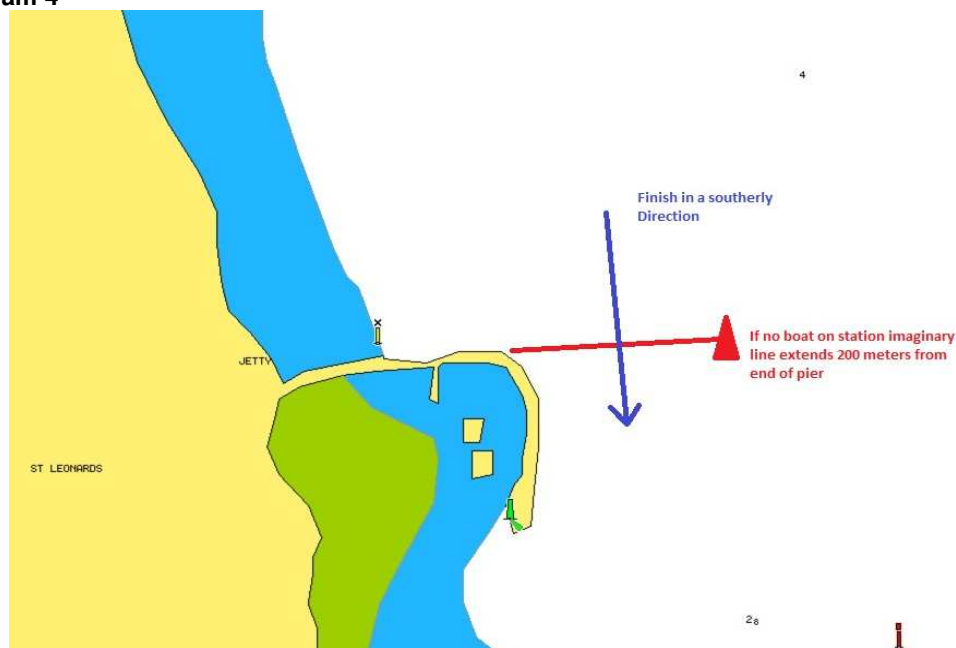
See Diagram 4 below

On approach (200 metres) call on the applicable VHF Channel (ref. Radio Communication in Sailing Instructions 9.0) to confirm boat name and sail number.

After 19:00, or in the event there are no race officials, boats must record their own time and SMS time to the Race Mobile (ref. Sailing Instruction 10.0)

Competitors should standardise their watches using the local time displayed on a GPS.

**Diagram 4**



**E1. Time Limit**

- E1.1. The time limit for the first boat to sail her course and finish shall be 17:00 for Portarlinton, Wyndham Harbour and St Leonards Passage races.
- E1.2. The time limit for the first boat to sail the Mornington Passage course and finish shall be 18:00
- E1.3. If no boat finishes within the time limit the race shall be abandoned.
- E1.4. Boats failing to finish within 3 hours after the first boat sails her course and finishes shall be scored Did Not Finish (DNF) without hearing. This changes RRS 35, A4 and A5

**E2. Night Sailing**

Competitors are reminded if considering returning to Hobsons Bay on the same day, that their boats must be adequately equipped to comply with night sailing.

**E3. Prizes**

The first HBYC placed boat on PHS shall be given the relevant Trophy  
The first HBYC placed boat on AMS shall be given the relevant Trophy  
Additional prizes shall be given at the discretion of Hobsons Bay Yacht Club.

## Appendix F:

# Alaster Edwards Memorial Brass Monkey Series

- F1. Class Flags**
- |  |        |
|--|--------|
| <b>Division 1</b>                                | Flag R |
| <b>Division 2</b>                                | Flag T |
| <b>Division 3</b> (Pursuit races, non-spinnaker) | Flag E |
- F2. Measurement Cup.**  
Races in the Measurement Cup will be run concurrently with Division 1.
- Boats with a valid AMS or IRC certificate that enter Division 1 or the RMYS Club Marine Spinnaker Series, will be automatically entered in the Measurement Cup
- Boats that enter the RMYS Club Marine Spinnaker Series will only be eligible for the Measurement Cup and will not be eligible for HBYC Brass Monkeys Division 1 Race or Series Championship results.**
- F3. The Courses**
- F3.1. Refer to the 'Marks' document attachment 1
- F3.2. Competitors should be aware of the shipping movements that can occur at any time and are reminded to keep clear of shipping within Hobsons Bay and the Williamstown and Port Melbourne Channels.
- F3.3. While Channel 71, 11, 9 and Transit Marks T20 to T26 are not marks of the course in terms of RRS 28.1, these are **passing** marks under RRS 28.2 and therefore have a required side as indicated in the course descriptions below. These are intended to reduce the potential for competitors to interfere with shipping using the channels.
- F3.4. A boat shall not pass through any finish line except when finishing her race. Any boat doing so will be scored DSQ without hearing. This changes RRS 63.1, A4 and A5.
- F3.5. All Divisions Start at the same Start Line. Pursuit Courses have the same Start and Finish location.
- F3.6. Division 1 (inc. Measurement Cup) may have a separate finish line as nominated.

### DIVISION 2 (S80 & Diamonds) and DIVISION 3 (Pursuit)

- Course No. 1** (Southerly) Approximately 7.1 nautical miles  
Start/Finish: Vicinity of Ch.74  
Start - Mark V to port - Ch.74 to port - R4 to port - Mark V to port - Ch.74 to port - R4 to port - Mark V to port - R4 to port - finish.
- Course No. 2** (Northerly) Approximately 7.1 nautical miles  
Start/Finish: Vicinity of Ch.74  
Start - R4 to starboard, Ch.74 to starboard - Mark V to starboard - R4 to starboard - Ch.74 to starboard - Mark V to starboard - R4 to starboard - Mark V to starboard - finish.
- Course No. 3** (Easterly) Approximately 7.2 nautical miles  
Start/Finish: approximately 100m south of Ch.74  
Start - Mark Y to port - Ch.74 to port - Ch.17a to port - Mark Y to port - Ch.74 to port - Ch.17a to port - Mark Y to port - Ch.17a to port - finish.
- Course No. 4** (Westerly) Approximately 7.2 nautical miles  
Start/Finish: approximately 100m south of Ch.74  
Start - Ch.17a to starboard - Ch.74 to starboard - Mark Y to starboard - Ch.17a to starboard - Ch.74 to starboard - Mark Y to starboard - Ch.17a to starboard - Mark Y to starboard - finish.

### DIVISION 2 (S80 & Diamonds) and DIVISION 3 (Pursuit) Short Courses

- Course No. 5** (Southerly short) Approximately 4.8 nautical miles  
Start/Finish: Vicinity of Ch.74  
Start - Mark V to port - Ch.74 to port - R4 to port - Mark V to port - Ch.74 to port - R4 to port - finish.
- Course No. 6** (Northerly short) Approximately 4.8 nautical miles  
Start/Finish: Approximately 100m S.W. of Ch.74  
Start - R4 to starboard - Ch.74 to starboard - Mark V to starboard - R4 to starboard - Ch.74 to starboard - Mark V to starboard - finish.



**Course No. 7** (Easterly short) Approximately 4.8 nautical miles  
 Start/Finish: approximately 100m south of Ch.74  
 Start - Mark Y to port - Ch.74 to port - Ch.17a to port - Mark Y to port - Ch.74 to port - Ch.17a to port - finish.

**Course No. 8** (Westerly short) Approximately 4.8 nautical miles  
 Start/Finish: approximately 100m south of Ch.74  
 Start - Ch.17a to starboard - Ch.74 to starboard - Mark Y to starboard - Ch.17a to starboard - Ch.74 to starboard - Mark Y to starboard - finish.

**Course No. 9** (Southerly with Start Line gate) Approximately 4.8 nautical miles  
 Start/Finish: Vicinity of Ch.74  
 Start - Mark V to port - Ch.74 to port - R4 to port - through Start Line - Mark V to port - Ch.74 to port - R4 to port - finish.

**Course No. 10, 11, 12** Not in use

### **DIVISION 1 (incl. Measurement Cup), DIVISION 2 (S80 & Diamonds)**

**Course No. 13** (Southerly) Approximately 11.6 nautical miles  
 Start: Vicinity of CH.74  
 Finish: between R3 and the Race Committee Vessel  
 Start in a southerly direction, east of bounding marks Ch.71, 11, 9 and 7 - R2 to port - RMYS G to port - finish.

**Course No. 14** (Southerly) Approximately 9.4 nautical miles  
 Start: Vicinity of CH.74  
 Finish: between RMYS C and the Race Committee Vessel  
 Start in a southerly direction - east of bounding marks Ch.71, 11, and 9 - R3 to port - RMYS G to port - east of bounding marks Ch.71, 11, and 9 - R3 to port - east of bounding mark Ch.71- finish.

**Course No. 15** (South Easterly) Approximately 9.8 nautical miles  
 Start: Vicinity of CH.74  
 Finish: between RMYS A and the Race Committee Vessel  
 Start in a south Easterly direction - east of bounding mark Ch.71 - RMYS B to port - RMYS A to port - RMYS G to Port - RMYS B to port - RMYS A to port - RMYS G to port - finish.

**Course No. 16** (South Westerly) Approximately 9.5 nautical miles  
 Start: Vicinity of Ch.74  
 Finish: between RMYS C and the Race Committee Vessel  
 Start in a south westerly direction - Gellibrand Shoal Mark to starboard - P2 to port - RMYS A to port - finish.

**Course No. 17** (South Westerly short) Approximately 8.1 nautical miles  
 Start: Vicinity of CH.74  
 Finish: between RMYS C and the Race Committee Vessel  
 Start in a south westerly direction - Gellibrand Shoal Mark to starboard - P3 to port - RMYS G to port - finish.

**Course No. 18** (Westerly) Approximately 10.1 nautical miles  
 Start: approximately 100m east of Ch.74  
 Finish: between RMYS B and the Race Committee Vessel  
 Start in a westerly direction – Ch. 17a to port - RMYS B to starboard - P3 to port - finish.

**Course No. 19** (Easterly) Approximately 9.5 nautical miles  
 Start: approximately 100m east of Ch.74  
 Finish: between RMYS B and the Race Committee Vessel  
 Start in an easterly direction - RMYS A to starboard - P3 to starboard - finish.

**Course No. 20** (Northerly) short Approximately 9.5 nautical miles  
 Start: Approximately 100m S.W. of Ch.74  
 Finish: between RMYS C and the Race Committee Vessel  
 Start in a Northerly direction - R4 to starboard - RMYS C to starboard - R3 to port - east of passing marks Ch.11, 9 and 71 - RMYS G to port - R3 to port - east of passing mark Ch. 11 - finish.

**Course 21** (Northerly) long Approximately 11.5 nautical miles  
 Start: Approximately 100m S.W. of Ch.74  
 Finish: between RMYS C and the Race Committee Vessel

Start in a Northerly direction - R4 to starboard - RMYS C to starboard - R2 to port - east of passing marks Ch. 7, 9, 11 and 71 - RMYS G to port - R3 to port - east of passing mark Ch. 11 - finish.

**Course No. 22** (Westerly Long) Approximately 12.1 nautical miles

Start: approximately 100m east of Ch.74

Finish: between RMYS C and the Race Committee Vessel

Start in a westerly direction - Ch. 17a to port - RMYS B to starboard - P3 to port - RMYS A to port - finish.

#### F4. The Start

##### F4.1. Divisions 1 and 2

Refer Sailing Instructions 6.0

##### F4.2. Division 3 (Pursuit Races, Non-Spinnaker).

The start line is course dependent, but generally to the east of the main Shipping Channel.

The starting line shall be a line between the staff displaying an orange flag on the Race Committee Vessel and a fixed mark or orange buoy.

The appropriate start time for each group is an expression of time in minutes after the primary starting signal and shall be displayed at two-minute intervals. The start for the group indicated by the numeral is signaled by the removing the numeral.

When 'Pursuit Race' starts apply a boat's preparatory signal is **deemed made** four minutes before the boat's starting time. **Note: Flag "P" will not be displayed.**

The starting procedure is as follows and continues through each group:

Signal	Flag/Numeral Displayed	Sound	Minutes
Warning	Numeral Zero Displayed	1 Sound	-5
Primary Start	Numeral Zero Removed Numerals Two Displayed	1 Sound	0
	Numerals Two Removed Numerals Four Displayed	1 Sound	2
	Numerals Four Removed Numerals Six Displayed	1 Sound	4

#### F5. The Finish

F5.1. The finishing line will be between the staff displaying a blue flag on the Race Committee Vessel at the starboard end and the course side of the 'port end' finishing mark an orange buoy or nearby fixed mark.

F5.2. Division 1 Finish location is course dependent.

#### F6. Time Limit

F6.1. For Division 1 the time limit for all boats to sail the course and finish is 16:15.

F6.2. For Divisions 2 and 3 the time limit for all boats to sail the course and finish is 16:30.

F6.3. Any boats still racing when her time limit expires will be scored Did Not Finish (DNF) without a hearing. This changes RRS 35, 63.1, A4 and A5.

#### F7. Prizes

The Brass Monkey Series Trophy will be given to the first placed boat on PHS in Division 1.

The Measurement Cup Trophy will be given to the first placed boat in AMS and IRC in Division 1.

Brass Monkey Series S80 Trophy will be given to the first placed S80.

Brass Monkey Series Diamond Trophy will be given to the first placed Diamond.

Brass Monkey Series Pursuit Trophy will be given to the first pursuit boat.

Additional prizes may be given at the discretion of Hobsons Bay Yacht Club.

## Appendix G:

---

# Port Phillip Sea Pilots Trophy Race Henry Press Short-Course Trophy Race

This event shall be run in conjunction with Royal Melbourne Yacht Squadron's (RMYS) Big Bay Challenge.

### G1. Class Flags

Port Phillip Sea Pilots Trophy Race	Flag R
Big Bay Challenge	Flag R
Henry Press Short Course Trophy Race	Flag T

### G2. Courses

#### G2.1. Port Phillip Sea Pilot & Big Bay Challenge – Long Courses

##### Course 1 - Approximate distance 65 nautical miles

Start in a south-easterly direction - Carrum Bight No 2 to starboard - R1 to starboard - Pile Beacon No. 25 to starboard - Prince George to starboard - Gellibrand Shoal Mark to port - finish.

##### Course 2 - Approximate distance 54 nautical miles.

Start in a south-easterly direction - Mornington Yacht Club Mark B to starboard, Prince George to starboard, Gellibrand Shoal Mark to port, finish.

##### Course 3 - Approximate distance 46 nautical miles

Start in a south-easterly direction - Mornington Yacht Club Mark B to starboard - Centre Mark to starboard - Gellibrand Shoal Mark to port - finish.

#### G2.2. Henry Press Trophy - Short Courses

##### Course 4 Approximate distance 29.5 nautical miles

Start in a south-easterly direction - RMYS B to starboard - Gellibrand Light to starboard - Centre Mark to starboard - P3 to starboard - P2 to port - Gellibrand Shoal Mark to port - finish.

##### Course 5 Approximate distance 32.6 nautical miles

Start in a south-easterly direction - Carrum Bight No 2 to starboard - Outer Anchorage to starboard - P3 to starboard - Gellibrand Shoal Mark to port - finish.

### G3. Starting Area

The start line is course dependent, but generally to the east of the main Shipping Channel.

### G4. The Finish

G4.1. The finishing line will be between the south-east end of HBYC Club House and Ch. 20, leaving Ch. 20 to starboard and finishing in a northerly direction.

G4.2. **All boats finishing shall report to Race Control by radio before they reach the breakwater at Williamstown on Channel 72.**

G4.3. All boats which retire shall report to Race Control by radio or the Race Director by Channel 82 or Channel 72, telephone or SMS Race Mobile (ref. Sailing Instruction 10.0) upon making the decision to retire, and again within one (1) hour of reaching its home club or berth.

### G5. Time Limit

G5.1. Henry Press Trophy Race - The time limit for the race shall be 20:00hrs.

Boats still racing after this time shall be scored Did Not Finish (DNF) without hearing. This changes RRS 35, 63.1, A4 and A5.

G5.2. Port Phillip Sea Pilot Trophy Race – The time limit shall be 22:00.

Boats still racing after this time shall be scored Did Not Finish (DNF) without hearing. This changes RRS 35, 63.1, A4 and A5.

### G6. Safety Regulations

G6.1. All boats shall carry a fixed VHF radio with a permanent antenna. All boats shall keep a listening watch on VHF channels 16 and 72 and 82.

G6.2. Approven PFD's shall be worn when required by the Marine Safety Victoria Regulations and shall be worn at all times by crew on deck if sailing two-handed and whilst on deck when conditions include:

- a) When sails are reefed and/or there is significant wind effect on the water or wave heights that might jeopardize the safety of the vessel or its occupants.
- b) Inexperienced persons on board and when sailing at night.

G6.3. A boat with movable ballast or variable ballast (within the meaning of those terms in the special regulations) may move that ballast for the purpose of changing trim or stability.

G6.4. RRS 52 Manual Power shall be modified to allow self-steering if sailing two-handed.

### G7. Radio Sign on and Position Reporting Schedule

G7.1. The primary radio channel for race communications shall be **VHF Channel 72**.

G7.2. In addition to the mandatory TopYacht Crew Declaration, HBYC Race Control shall call each boat in alphabetical order on Channel 72, starting at approx. 09:03 and ask to confirm their intention to race. Please wait to be called.

G7.3. HBYC Race Control shall say the boats name. Please respond with boat name and number of people on board (POB) eg.

Vessel	Example
Race Committee	Esprit
Esprit	Esprit racing. 5 POB
Race Committee	Acknowledged Esprit

G7.4. Boats failing to comply with the compulsory radio report shall be deemed to be non-starters.

G7.5. Radio Schedule for the race shall be as follows: Please wait to be called

Time	Activity	Channel
09:05	Prestart sign on - Long Course	Ch72, SMS if no contact
09:10	Prestart sign on - Short Course	Ch72, SMS if no contact
12:05	Position Report – All Boats	Ch82, SMS if no contact
13:05	Position Report - Long Course	Ch82, SMS if no contact
15:05	Position Report – All Boats	Ch82, SMS if no contact
16:05	Position Report - Long Course	Ch82, SMS if no contact
19:05	Position Report - Long Course	Ch82, SMS if no contact
22:05	Position Report - Long Course	Ch82, SMS if no contact

G7.6. At each radio schedule, HBYC Race Control will call each boat by their sail number/boat name. Each boat shall reply with their sail number, name, position, number of boats in the vicinity and identity if known.

G7.7. If a boat is not able to be contacted for a position report on Channel 72 or 82 at the times indicated on the radio schedule above, she shall SMS her sail number and position to HBYC Race Control (ref. Sailing Instruction 10.0) at the scheduled times.

G7.8. See Sailing Instruction G4.2 For radio reporting requirements as boats are approaching their finish.

### G8. Logs

G8.1. Logs are required for competitors in the Port Phillip Sea Pilots and Big Bay Challenge races.

G8.2. The log shall reach the HBYC/RMYS Office via email to by 12:00 the following Wednesday and shall include:

- a) Name of each crew member and the yacht club of which they are a member.
- b) The time of rounding marks and finishing time and any boats in the vicinity.
- c) Time of radio scheds and at 2 hourly intervals, the wind strength/direction, together with other boats in the vicinity
- d) Any other relevant information that might be included in a log.

G8.3. Boats failing to return her log sheet with all required details will be scored Disqualification (DSQ) without hearing. This changes RRS 63.1, A4 and A5.

### G9. Prizes

The Port Phillip Sea Pilots Trophy will be given to the first placed boat on PHS.  
Trophies will also be given to the first placed yachts on AMS and IRC in Division 1.  
The Squadron Cup will be given to the first placed RMYS boat on PHS in the Big Bay Challenge.  
Henry Press Trophy will be given to the first placed HBYC boat on PHS.  
Sea Pilot Best Log as voted by the HBYC Sailing Committee.  
Big Bay Challenge Best Log as voted by the RMYS Sailing Committee.  
Additional prizes may be given at the discretion of the Race Committees.

# Hobsons Bay Yacht Club

## Sailing Instructions: Attachment 1, Marks

The mark positions and descriptions are approximate and a guide only and must not be used for navigational purposes.

Detailed locations of marks and features within Port Phillip are depicted on the relevant Charts AUS143, AUS154 and AUS155, as modified by Notices to Mariners.

### A Mark

Yellow Buoy, approx. 50 meters South of Gellibrand Shoal Mark used for Courses 23 and 24

### Carrum Bight 2

Yellow Buoy	38 03.20S	145 04.53E
-------------	-----------	------------

### Centre

Yellow Special Purpose Buoy	38 03.49S	144 52.20E
-----------------------------	-----------	------------

### Channel 5 (Ch.5)

Port of Melbourne Channel Pile	37 54.54S	144 55.70E
--------------------------------	-----------	------------

### Channel 7 (Ch.7)

Port of Melbourne Channel Pile	37 53.83S	144 55.72E
--------------------------------	-----------	------------

### Channel 9 (Ch.9)

Port of Melbourne Channel Pile	37 53.19S	144 55.75E
--------------------------------	-----------	------------

### Channel 11 (Ch.11)

Port of Melbourne Channel Pile	37 52.69S	144 55.76E
--------------------------------	-----------	------------

### Channel 17a (Ch.17a)

Port of Melbourne Channel Pile	37 51.54S	144 55.18E
--------------------------------	-----------	------------

### Channel 19a (Ch.19a)

Port of Melbourne Channel Pile	37 51.49S	144 55.12E
--------------------------------	-----------	------------

### Channel 20 (Ch.20)

Port of Melbourne Channel Pile	37 51.49S	144 54.79E
--------------------------------	-----------	------------

### Channel 21 (Ch.21)

Port of Melbourne Channel Pile	37 51.21S	144 54.78E
--------------------------------	-----------	------------

### Channel 71 (Ch.71)

Port of Melbourne Channel Pile	37 52.06S	144 55.76E
--------------------------------	-----------	------------

### Channel 72 (Ch.72)

Port of Melbourne Channel Pile	37 51.72S	144 55.67E
--------------------------------	-----------	------------

### Channel 73 (Ch.73)

Port of Melbourne Channel Pile	37 51.72S	144 55.77E
--------------------------------	-----------	------------

### Channel 74 (Ch.74)

Port of Melbourne Channel Pile	37 51.30S	144 55.68E
--------------------------------	-----------	------------

### Channel 75 (Ch.75)

Port of Melbourne Channel Pile	37 51.29S	144 55.80E
--------------------------------	-----------	------------

### Channel 76 (Ch.76)

Port of Melbourne Channel Pile	37 51.09s	144 55.62E
--------------------------------	-----------	------------

### Channel 78 (Ch.78)

Port of Melbourne Channel Pile	37 50.90S	144 55.49E
--------------------------------	-----------	------------

### Gellibrand Shoal Mark

An East Cardinal Mark	37 52.56S,	144 54.90E
-----------------------	------------	------------

### HBVC Club House Finish

Shall be a line between the south eastern corner of the HBVC Clubhouse and Ch. 20

### MYC B Mark

Yellow buoy	38 10.53S,	144 01` .59E
-------------	------------	--------------

<b>Outer Anchorage</b>		
A pile with a light frame	37 56.91S	144 51.49E
<b>P2</b>		
A yellow buoy marked P2	37 55.46S	144 53.19E
<b>P3</b>		
A pile with light frame	37 53.38S	144 52.85E
<b>Pile Beacon 25</b>		
A pile with a light frame	38 17.56S	144 55.57E
<b>Prince George</b>		
A pile with a light frame	38 06.40S	144 44.20E
<b>Pt Cook East Cardinal Mark</b>		
An East Cardinal Mark	37 55.58S	144 48.92E
<b>Pt Cook South Pile</b>		
Yellow Pile, top mark shape - X shape	37 55.74S	144 48.69E
<b>R1</b>		
Yellow light Buoy marked R	38 16.40S	144 58.38E
<b>R2</b>		
Yellow light Buoy marked R2	37 54.54S	144 56.34E
<b>R3</b>		
Yellow light Buoy marked R3	37 53.20S	144 56.40E
<b>R4</b>		
Yellow Buoy located	37 50.70S,	144 55.36E
<b>RBYC 5</b>		
Yellow Spar located	37 53.80S	144 58.46E
<b>RMYS A</b>		
An orange truncated pyramid	37 51.90S	144 57.47E
<b>RMYS B</b>		
An orange truncated pyramid	37 53.18S	144 57.20E
<b>RMYS C</b>		
An orange truncated pyramid	37 52.19S,	144 56.41E
<b>RMYS F</b>		
An orange truncated pyramid	37 53.59S	144 56.30E
<b>RMYS G</b>		
An orange truncated pyramid	37 51.000S	144 56.250E
<b>RYCV Orange Buoy</b>		
Orange Beehive Mark	37 51.52S	144 54.52E
<b>Spoil Ground</b>		
A yellow buoy	37 59.05S	144 53.05E
<b>T16</b>		
Yellow Transit Lane Mark	37 55.58S	144 55.18E
<b>T20</b>		
Yellow Transit Lane Mark	37 54.52S	144 55.23E
<b>T26</b>		
Yellow Transit Lane Mark	37 52.66S	144 55.29E
<b>V Mark (Volvo Finish mark)</b>		
Yellow Special Purpose Buoy	37 51.47S	144 55.31E
<b>Y Mark</b>		
Yellow conical inflatable mark approximately 200 meters west of RMYS A		
<b>YB Mark</b>		
Yellow conical inflatable with black band approximately 200 meters west of RBYC 5		

# Indicative Locations

