

Appendix E:

John Neilson Long Distance Series

E1. Format

Race 1	Portarlington Passage Race
Race 2	Wyndham Harbour Passage Race (Vice Commodore's Cup)
Race 3	Mornington Passage Race
Race 4	St Leonards Passage Race

E2. Class Flags

Combined Fleet	Flag R
----------------	--------

E3. Sign On (Long Distance/Passage Races Only)

In addition to the mandatory TopYacht Crew Declaration the Race Committee shall call each boat in alphabetical order on the designated radio channel approx. one hour prior to start.

The Race Committee may protest boat's failing to respond to compulsory sign on.

When called, boats shall respond with boat name and number of persons on board

Vessel	Example
Race Committee	Esprit
Esprit	Esprit racing. 5 POB
Race Committee	Acknowledged Esprit

E4. The Courses

E4.1. Portarlington Passage Race

E4.1.1. Refer to the 'Marks' document attachment 1

E4.1.2. Start Vicinity of Ch Mark 71 or west of Ch Mark 76
 Gellibrand Shoal Mark To starboard,
 Finish Portarlington Pier

E4.1.3. Finish

The finishing line shall be between the staff displaying a blue flag on the Race Committee Vessel which may be situated approximately 100m from the north-west corner of the Portarlington pier.

Alternatively, Race Officials may finish the race from Portarlington Pier displaying a blue flag indicating a virtual line extending 100 metres from the north-western corner of the pier on a bearing of approximately 315 degrees. See Diagram 1 below

On approaching the jetty (200 metres) call on the applicable VHF Channel ([ref. Radio Communication in Sailing Instructions 10.0](#)) to confirm boat name and sail number.

After 19:00, or in the event there are no race officials are on station, boats must record their own time and SMS time to the Race mobile ([ref. Sailing Instruction 10.0](#))

Competitors should standardise their watches using the local time displayed on a GPS.

BE AWARE THERE IS A BOATING EXCLUSION ZONE TO THE SOUTH-WEST OF THE FINISHING LINE

Diagram 1



E4.2. Wyndham Harbour Passage Race (Vice Commodore's Cup)

E4.2.1. Refer to the 'Marks' document attachment 1

E4.2.2. Start location – vicinity of Ch 73

Course 1 Northerly - approximately 24.8 nautical miles

Start in a northerly direction - RMYS G to starboard - R3 to starboard - Outer Anchorage to port - R2 to port - Outer Anchorage to starboard - finish.

Course 2 Northerly - approximately 19.8 nautical miles

Start in a northerly direction - RMYS G to starboard - R3 to starboard - Outer Anchorage to starboard - P2 to starboard - Outer Anchorage to starboard - finish.

Course 3 Southerly - approximately 23.2 nautical miles

Start in a southerly direction - Gellibrand Shoal Mark to starboard - P3 to port - P2 to starboard - Outer Anchorage to starboard - R2 to starboard - Outer Anchorage to starboard - finish.

Course 4 Southerly - approximately 17.6 nautical miles

Start in a southerly direction - Gellibrand Shoal Mark to starboard - Outer Anchorage to port - P2 to starboard - Outer Anchorage to starboard - finish.

Course 5 South Easterly - approximately 20.0 nautical miles

Start in a South Easterly direction - RMYS B to starboard - P3 to port - R2 to starboard - Outer Anchorage to starboard - finish.

Course 6 East/West - approximately 20.7 nautical miles

Start: Start in an Easterly direction - RMYS A to starboard, - R3 to starboard - P3 to port - R2 to starboard - Outer Anchorage to starboard - finish.

Finish

The finishing line shall be between the staff displaying a blue flag on the Race Committee Vessel which may be situated approximately 100m from the eastern corner of the Wyndham Harbour breakwater (a bearing of approximately 140 degrees).

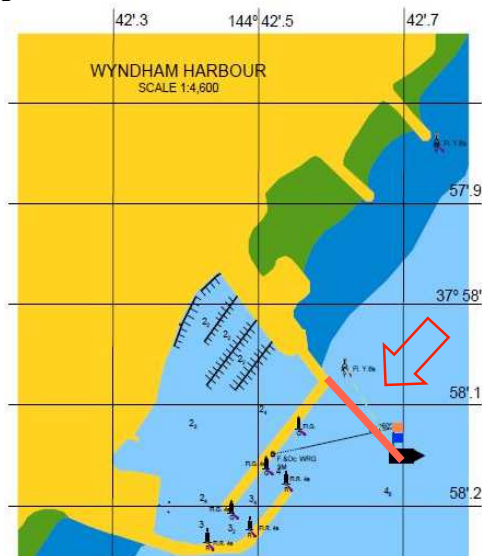
Alternatively, Race Officials may finish the race from the Wyndham Harbour breakwater, displaying a blue flag indicating a virtual line extending 100 metres from the eastern corner of the breakwater on a bearing of approximately 140 degrees. See Diagram 2 below

On approach (200 metres) call on the applicable VHF Channel ([ref. Radio Communication in Sailing Instructions 10.0](#)) to confirm boat name and sail number.

After 19:00, or in the event there are no race officials, boats must take record their own time and SMS time to the Race mobile ([ref. Sailing Instruction 11.0](#))

Competitors should standardise their watches using the local time displayed on a GPS.

Diagram 2



E4.4. St Leonards Passage Race

E4.4.1. Refer to the 'Marks' document attachment 1

E4.4.2. Start Vicinity of Ch Mark 71
 Gellibrand Shoal Mark To starboard
 Finish St Leonards Pier

The finishing line shall be between the staff displaying a blue flag on the Race Committee Vessel which may be situated approximately 200m from the eastern corner of the St Leonards Pier on a bearing of approximately 90 degrees.

Alternatively, Race Officials may finish the race from the St Leonards Pier, displaying a blue flag with a virtual line extending 200 metres from the north-eastern corner of the Pier on a bearing of approximately 90 degrees.

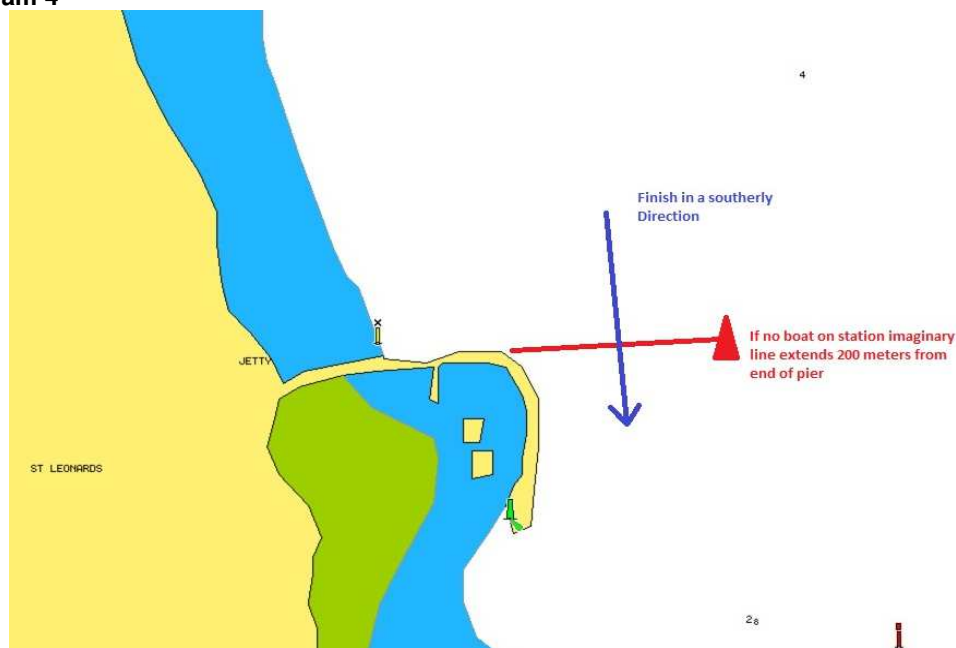
See Diagram 4 below

On approach (200 metres) call on the applicable VHF Channel (ref. Radio Communication in Sailing Instructions 9.0) to confirm boat name and sail number.

After 19:00, or in the event there are no race officials, boats must record their own time and SMS time to the Race Mobile (ref. Sailing Instruction 10.0)

Competitors should standardise their watches using the local time displayed on a GPS.

Diagram 4



E1. Time Limit

- E1.1. The time limit for the first boat to sail her course and finish shall be 17:00 for Portarlinton, Wyndham Harbour and St Leonards Passage races.
- E1.2. The time limit for the first boat to sail the Mornington Passage course and finish shall be 18:00
- E1.3. If no boat finishes within the time limit the race shall be abandoned.
- E1.4. Boats failing to finish within 3 hours after the first boat sails her course and finishes shall be scored Did Not Finish (DNF) without hearing. This changes RRS 35, A4 and A5

E2. Night Sailing

Competitors are reminded if considering returning to Hobsons Bay on the same day, that their boats must be adequately equipped to comply with night sailing.

E3. Prizes

The first HBYC placed boat on PHS shall be given the relevant Trophy
The first HBYC placed boat on AMS shall be given the relevant Trophy
Additional prizes shall be given at the discretion of Hobsons Bay Yacht Club.