

# Appendix J:

## Fish and Chip Race

### H1 Class Flags.

Combined Fleet

No flag

### H2 The Start

Between the Orange mark and the RYCV Start Box. Skippers may start the event any time between 17.30hrs and 18.00hrs

### The Courses

Competitors should be aware of the shipping movements that can occur at any time and are reminded to keep clear of shipping within Hobsons Bay and the Williamstown and Port Melbourne Channels.

### Course

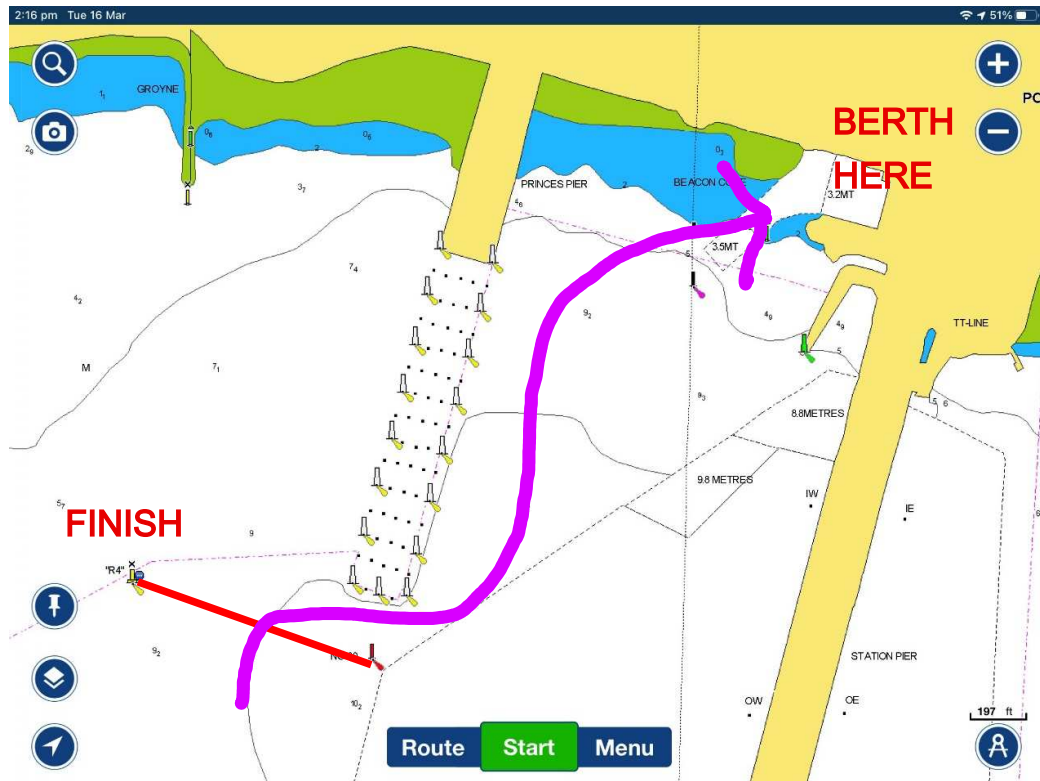
Start in a South Easterly direction, cross main shipping channel and avoid contact or interference with all commercial shipping, round channel mark 19 (port) then finish.



### H3 The Finish

Between R4 and Channel Mark 80

After crossing the finish line proceed to the Fish and Chip shop at the start of Station Pier. Berth adjacent to pier, raft up if required. Fish and Chips available from adjacent shop 'D'lish Fish'.



#### H4 Prizes

Prizes may be given at the discretion of Hobsons Bay Yacht Club.

**Important** Record the time taken in minutes and seconds and text result to the Race Phone 0474 079 202 as times are trophy dependent.

**Trophies** The Manager has donated two trophies.

They shall be awarded to the boats that complete the Course in a time calculated by a complex formula known only by the Race Co-Ordinator Mark Sheahan.

**Note** This is an official Club organized event so skippers please.

Enter the Race on Top Yacht. Race 11 Thursday Twilight

Ensure you complete a Crew Declaration, so the Race Co-ordinator is aware of the boats who are competing.

Check the HBYC website at 15.00hrs to confirm the race is proceeding, in the event of poor weather conditions.