



Hobsons Bay Yacht Club Royal Yacht Club of Victoria

Standard Sailing Instruction - Attachment 1 Courses and Marks – v7.1

Courses may be selected from the following –

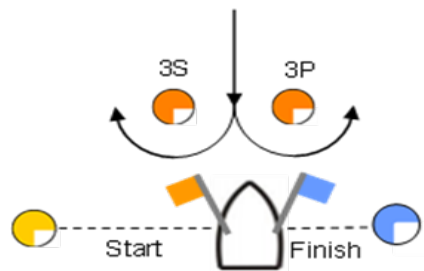
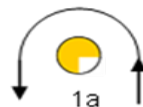
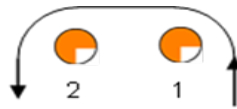
W/L Courses	1 to 3	Windward Leeward
Club Courses	4 onwards	RYCV - Wednesday Afternoon, Sunday Morning Courses
	20 onwards	RYCV/HBYC Wednesday Twilights
	30 onwards	HBYC - Sunday Pursuit Courses
	40 onwards	HBYC - Thursday Twilight Pursuit
	50 onwards	HBYC/RVCV Brass Monkey - Divisions 2 and 3
	60 onwards	HBYC/RVCV Brass Monkey - Division 1
	70 onwards	HBYC Two-Handed and HBYC Club Courses
	80 onwards	RYCV Club Courses

Note If noted in course description, Bounding Marks (Channel 71, 11, 9 and Transit Marks T20 to T26) are not marks of the course, these are **passing** marks and therefore have a required side as indicated. These are intended to reduce the potential for competitors to interfere with shipping using the channels.

Revisions – Lat/Long of Carrum #2 amended

4 November 2024

RVCV – Windward/Leeward Courses



Course One	Start, 1, 2, 3 (Gate), 1	Finish
Course Two	Start, 1, 2, 3 (Gate), 1a	Finish
Course Three	Start, 1a, 3 (Gate), 1a	Finish

At the warning signal the course to be sailed will be signaled by the display of the corresponding international numeral pennant

The approximate magnetic bearing of the first rounding mark in relation to the start mark may be displayed on a board on the Race Committee Vessel prior to the start.

In the event of 3S being missing 3P should be rounded to port.

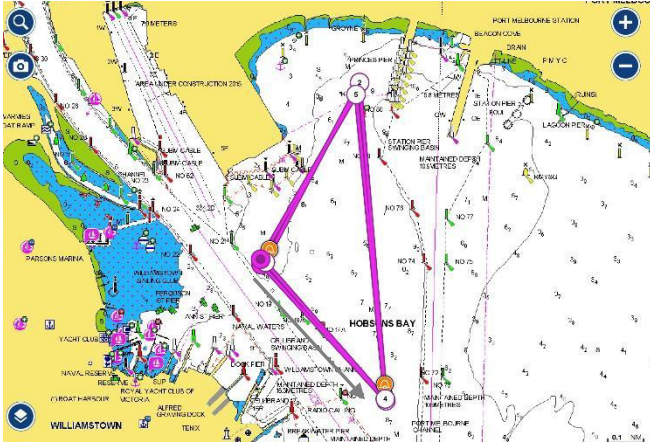
- Start mark will be a yellow inflatable mark.
- Finish mark will be a blue inflatable mark
- 1, 2, 3P & 3S marks will be orange inflatable marks.
- Mark 1a will be a yellow inflatable mark.

Any change mark will be the same color as the mark it replaces, but with a black band.

RYCV - Wednesday Afternoon, Sunday Morning

Course 4 – Southerly

Distance 7.6 nm

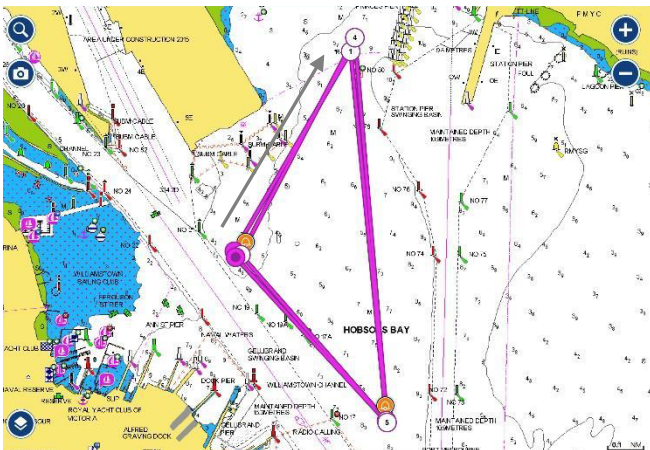


Start/Finish – Near Xray mark.

Start in a South-Easterly direction – V mark to port – R4 to port – Xray to port – V mark to port – R4 to port – Xray to port – V mark to port – R4 to port – finish.

Course 5 – Northerly

Distance 7.6 nm

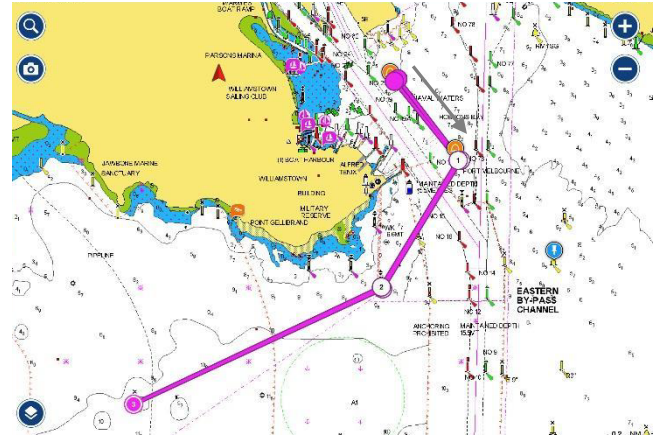


Start/Finish – Near Xray mark.

Start in a North-Easterly direction – R4 to starboard – V mark to starboard – Xray to starboard – R4 to starboard – V mark to starboard – Xray to starboard – R4 to starboard – V mark to starboard – finish.

Course 6 – East/Westerly

Distance 7.0 nm

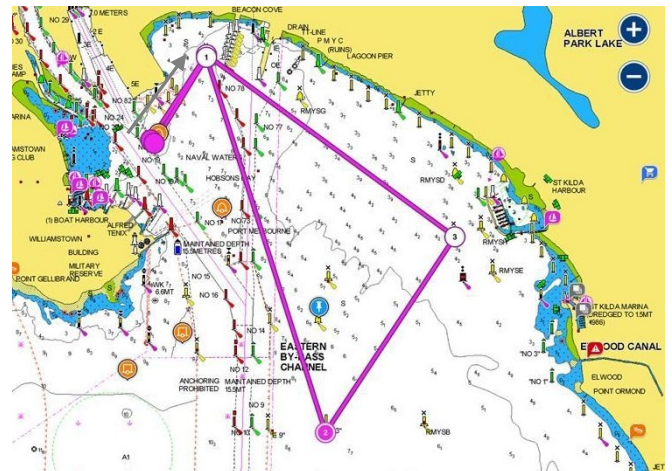


Start/Finish - Near Xray mark.

Start in a South-westerly direction – V mark to starboard - Gellibrand Shoal mark to starboard – P3 to port – Gellibrand Shoal mark to port – V mark to port - finish.

Course 7 – Southerly

Distance 7.7 nm

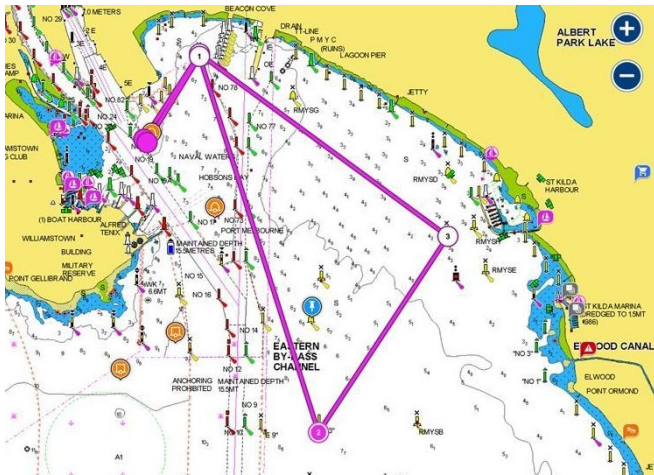


Start/Finish - Near Xray mark.

Start in a Northerly direction – R4 mark to starboard – R3 to port – RMYS A to port – R4 to port – finish.

Course 8 – East/Westerly

Distance 7.7 nm

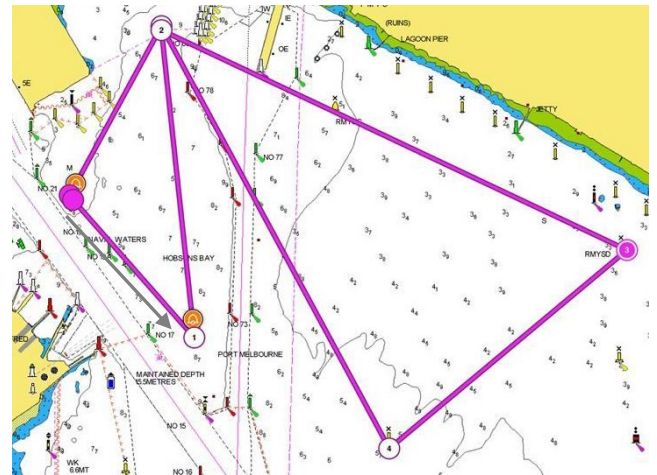


Start/Finish - Near Xray mark.

Start in a Northerly direction – R4 mark to starboard – RMYS A to starboard - R3 to starboard – R4 to port – finish.

Course 10 – South Westerly

Distance 7.4 nm

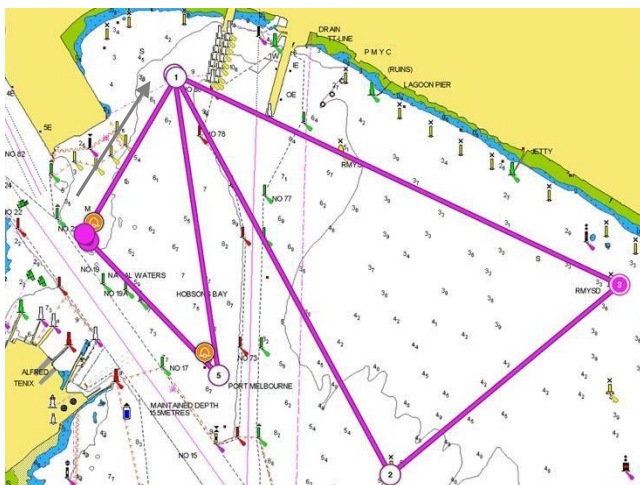


Start/Finish - Near Xray mark.

Start in a Southerly direction – V mark to port – R4 to starboard – RMYS D to starboard – RMYS C to starboard – R4 to port – finish.

Course 9 – South Easterly

Distance 7.4 nm



Start/Finish - Near Xray mark.

Start in a Northerly direction – R4 to starboard – RMYS C to port – RMYS D to port – R4 to port – V mark to starboard - finish.

Course 11 – North Easterly

Distance 7.1 nm

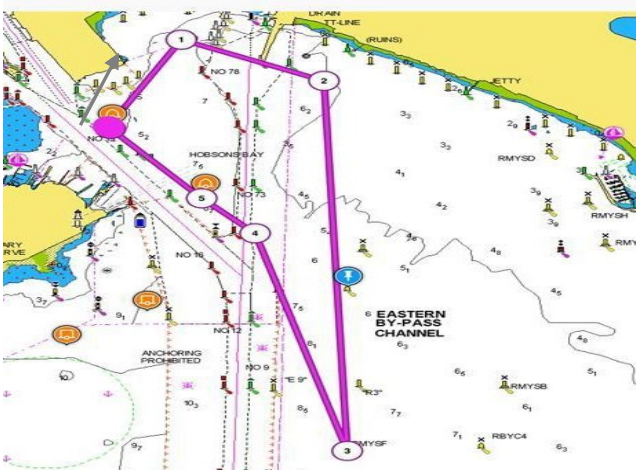


Start/Finish - Near Xray mark.

Start in a Northerly direction – R4 to starboard – RMYS G to starboard – R3 to starboard – passing Ch pile 71 to port – V mark to starboard – R4 to port – finish.

Course 12 – Southerly

Distance 6.7 nm

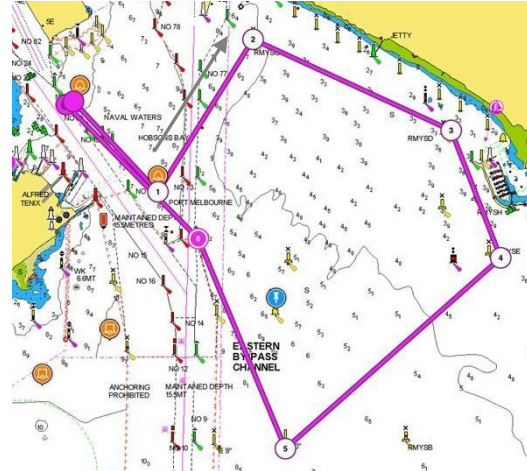


Start/Finish - Near Xray mark.

Start in a Northerly direction – R4 to starboard – RMYS G to starboard – RMYS F to starboard – passing Ch pile 71 to port – V mark to starboard – finish.

Course 14 – Southerly

Distance 7.5 nm

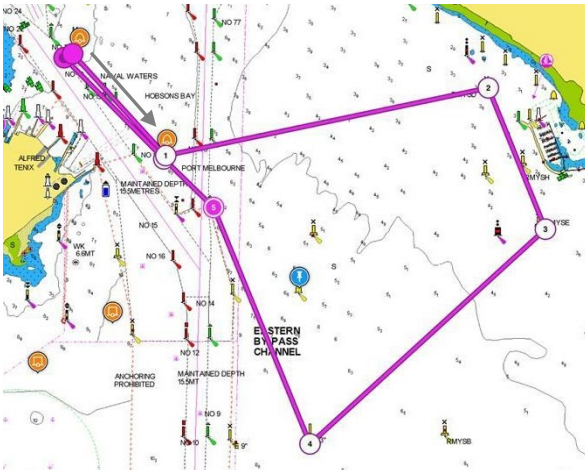


Start/Finish - Near Xray mark.

Start in a Southerly direction – V mark to port – RMYS G to starboard – RMYS D to starboard – RMYS E to starboard – R3 to starboard – passing Ch pile 71 to port – V mark to starboard – finish.

Course 13 – Southerly

Distance 6.9 nm



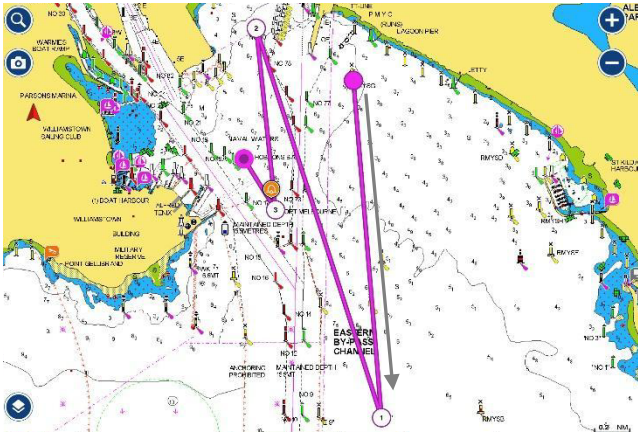
Start/Finish - Near Xray mark.

Start in a Southerly direction – V mark to port – RMYS D to starboard – RMYS E to starboard – R3 to starboard – passing Ch pile 71 to port – V mark to starboard – finish.

RYCV/HBYC Wednesday Twilights

Course 20 – Southerly

Distance 6.3 nm



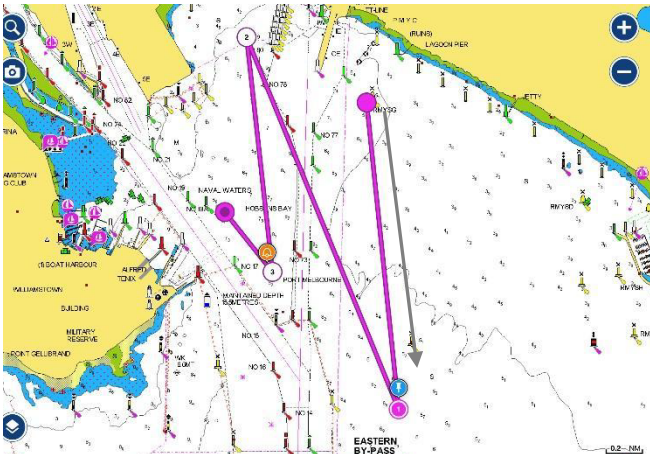
Start - Near RMYG G.

Finish – X Ray mark

Start in a Southerly direction – east of passing marks Ch 71, T25, T23 - R3 to starboard - east of bounding marks T23, T25, Ch 71 – R4 to port – V mark to starboard – finish.

Course 21 – Southerly

Distance 5.1 nm



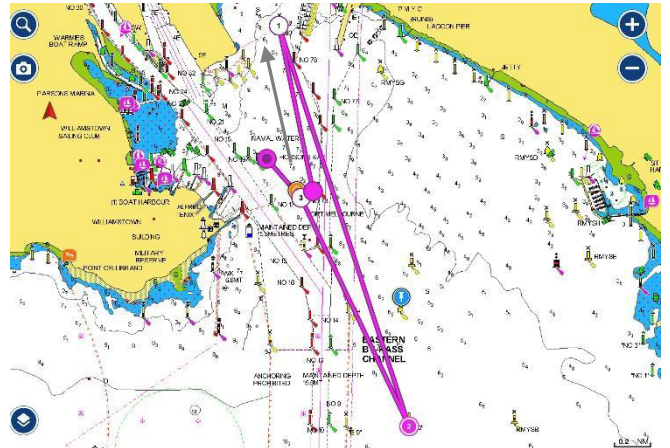
Start - Near RMYG G.

Finish – X Ray mark

Start in a Southerly direction – east of passing marks Ch 71, T25 – SB3 to starboard - east of bounding marks T25, Ch 71 – R4 to port – V mark to starboard – finish.

Course 22 – Northerly

Distance 5.2 nm



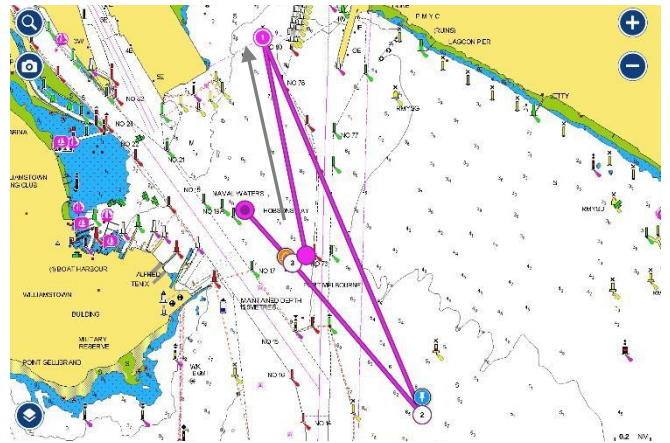
Start – Near Ch 72.

Finish – X Ray mark

Start in a Northerly direction – R4 to starboard - east of bounding marks Ch 71, T25 – R3 to starboard – east of Ch 71 - V mark to port – finish.

Course 23 – Northerly

Distance 4.2 nm



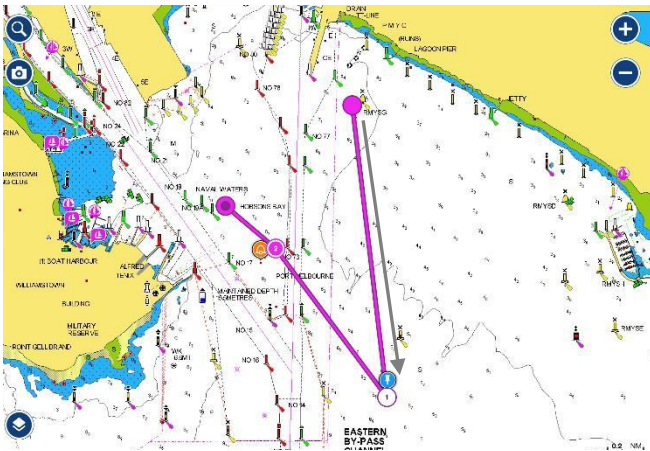
Start – Near Ch 72.

Finish – X Ray mark

Start in a Northerly direction – R4 to starboard - east of bounding marks Ch 71, T25 – SB3 to starboard – east of Ch 71 - V mark to port – finish.

Course 24 – Southerly

Distance 2.6 nm



Start – Near RMYS G.

Finish – X Ray mark

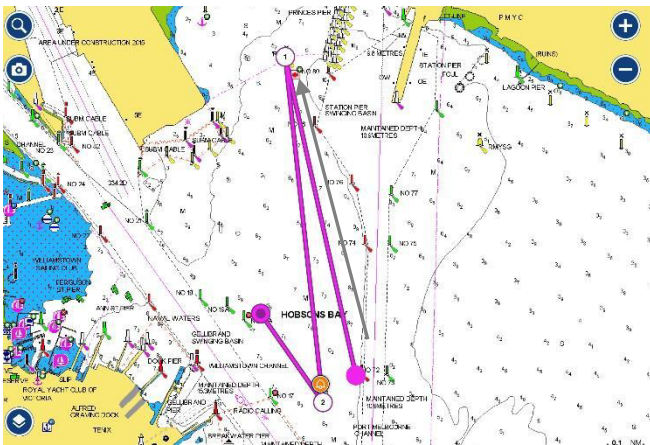
Start in a Southerly direction - east of bounding marks

Ch 71, T23, T25 – SB3 to starboard – east of T25,

T23, Ch 71 - V mark to port – finish.

Course 25 – Northerly

Distance 2.1 nm



Start – Near Ch 72.

Finish – X Ray mark

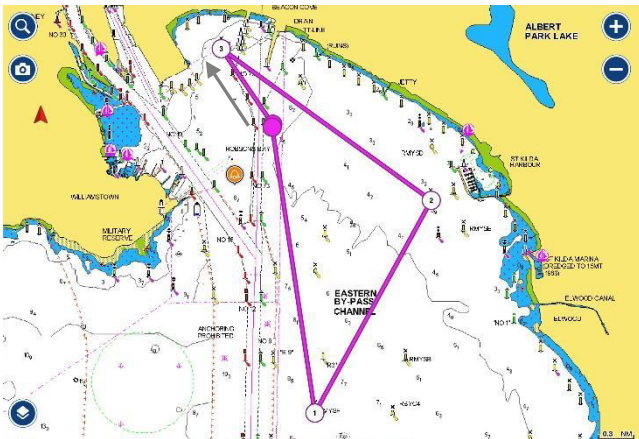
Start in a Northerly direction – R4 to port - V mark to

starboard – finish.

HBYC – Sunday Pursuit

Course 30 – Northerly

Distance 7.0 nm

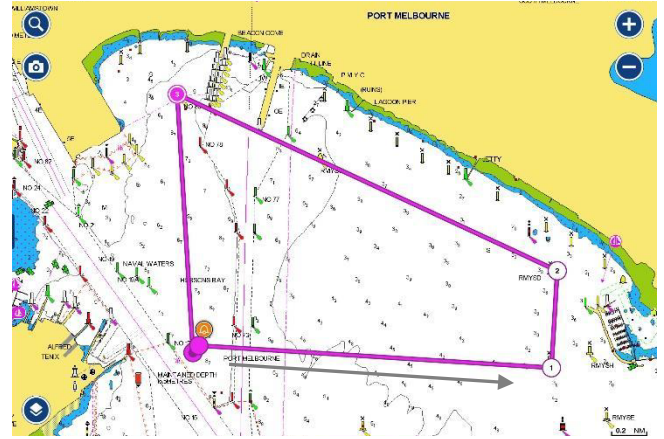


Start/Finish - East of Ch 75.

Start in a North-Westerly direction - R4 to starboard - RMYS A to starboard - RMYS F to starboard, east of bounding marks Ch. 7, 9, 11 and 71 – finish.

Course 32 – Westerly/Easterly

Distance 5.1 nm

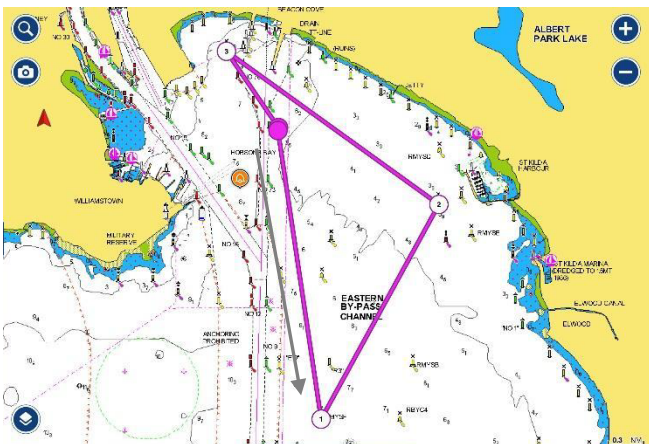


Start/Finish - Near V mark.

Start in an Easterly direction – RMYS A to port - RMYS D to port – R4 to port - finish.

Course 31 – South/South-East

Distance 7.0 nm

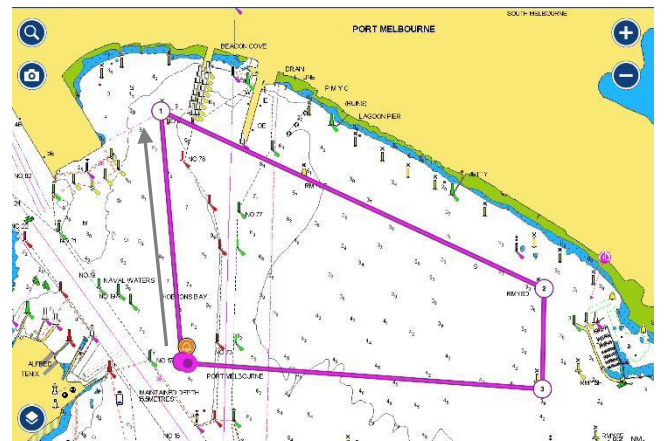


Start/Finish - East of Ch 75.

Start in a Southerly direction - east of bounding marks Ch. 71, 11, 9 and 7 – RMYS F to port - RMYS A to port - R4 to port - finish.

Course 33 – Northerly

Distance 5.1 nm



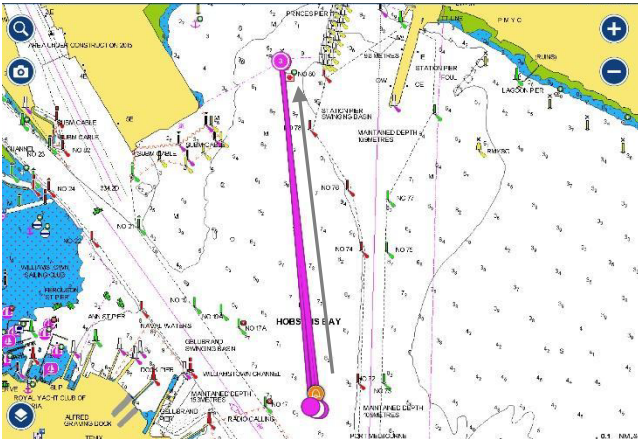
Start/Finish - Near V mark.

Start in a Northerly direction - R4 to starboard - RMYS D to starboard - RMYS A to starboard, east of – finish.

HBVC – Thursday Twilight Pursuit

Course 40 – Northerly

Distance 4.5 nm

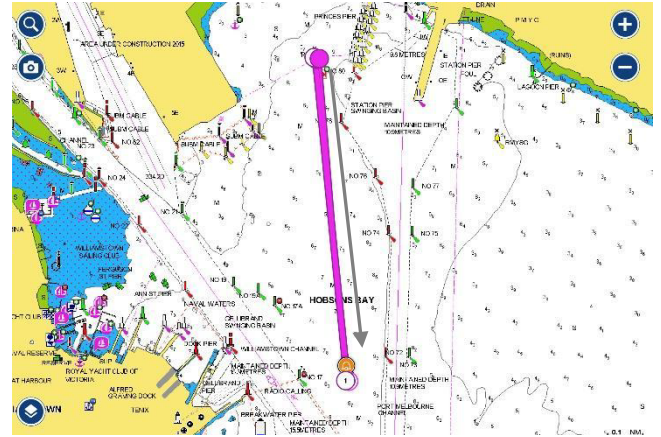


Start/Finish - Near V mark.

Start in a Northerly direction - R4 to port – V mark to port – R4 to port – finish.

Course 42 – Southerly

Distance 4.5 nm

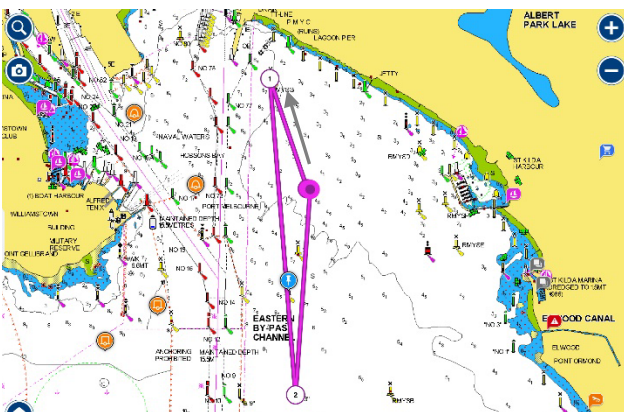


Start/Finish - Near R4.

Start in a Southerly direction – V mark to port – R4 to port – V mark to port – finish.

Course 41 – Northerly

Distance 4. nm

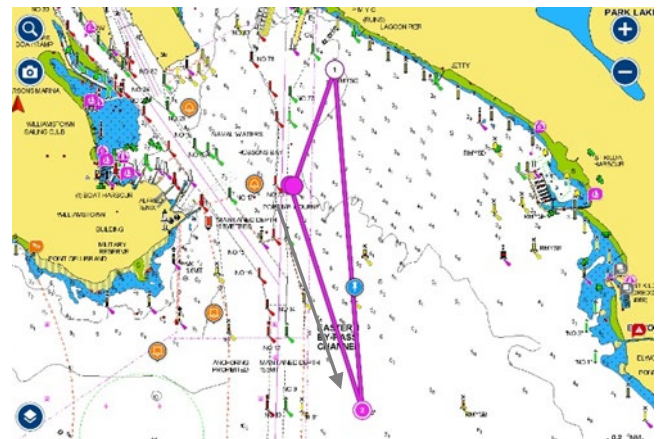


Start/Finish – East of Ch 73.

Start in a Northerly direction – RMYS G to port, east of bounding marks Ch. 7, 9, 11 and 71 – R3 to port - finish.

Course 43 – Southerly

Distance 4.6 nm

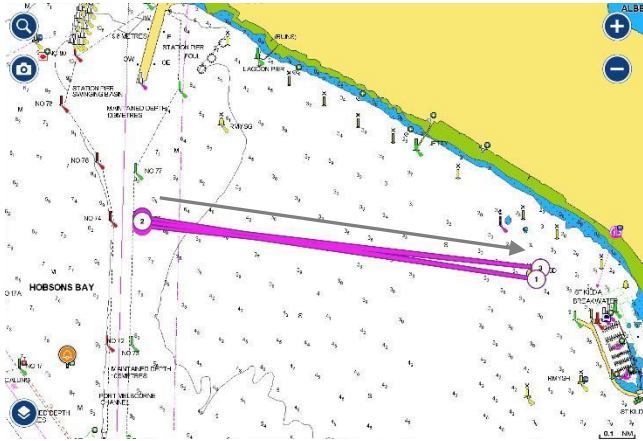


Start/Finish – East of Ch 73.

Start in a Southerly direction, east of bounding marks Ch. 7, 9, 11 and 71 – R3 to port - RMYS G to port – finish.

Course 44 – Westerly/Easterly

Distance 5.2 nm



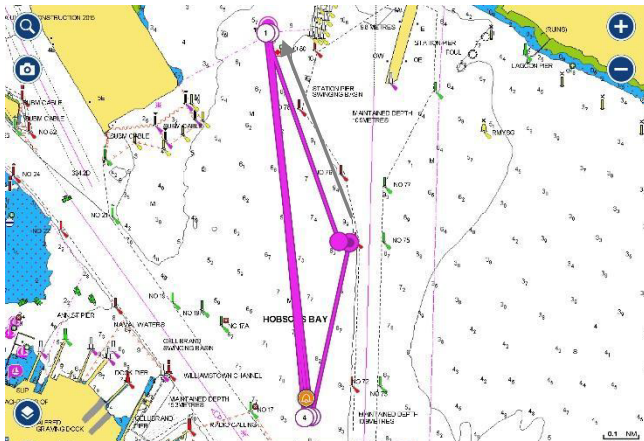
Start/Finish - East Ch 75.

Start in an Easterly direction – RMYS D to port –
through start/finish to port - RMYS D to port – finish.

Brass Monkey Division 2 and 3

Course 50 – Northerly

Distance 6.9 nm

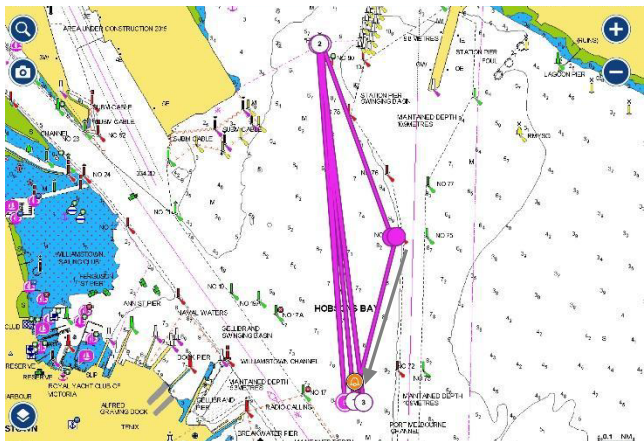


Start/Finish - West Ch 74.

Start in a Northerly direction - R4 to port - V mark to port - R4 to port - V mark to port - finish.

Course 51 – Southerly

Distance 6.9 nm

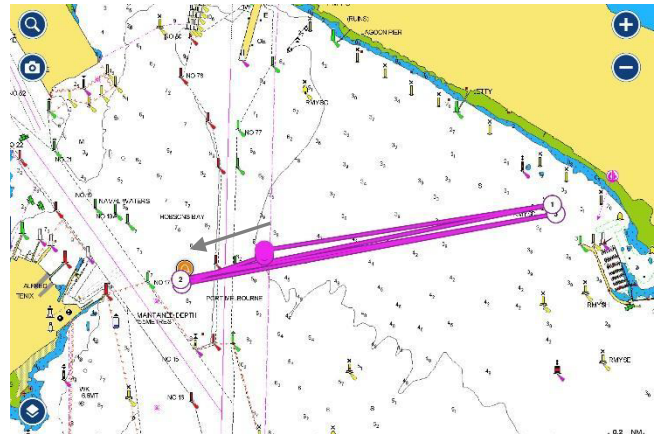


Start/Finish - West Ch 74.

Start in a Southerly direction – V mark to starboard – R4 to starboard – V mark to starboard – R4 mark to starboard – V mark to starboard – R4 to starboard – finish.

Course 52 – Westerly

Distance 6.6 nm

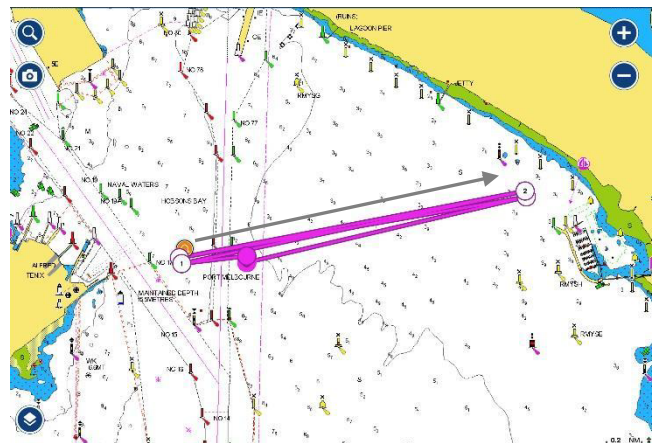


Start/Finish – 500m East of Ch 73.

Start in a Westerly direction – V mark to starboard –
RMYS D to starboard – V mark to starboard – RMYS
D to starboard - finish.

Course 53 – Easterly

Distance 6.6 nm

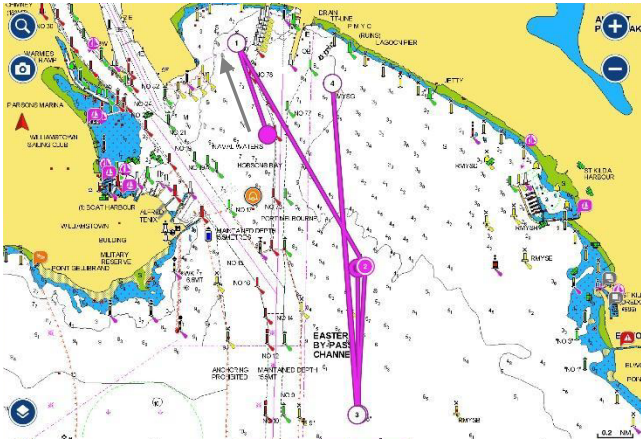


Start/Finish – 500m East of Ch 73.

Start in an Easterly direction – RMYS D to starboard – V mark to starboard – RMYS D to starboard – V mark to starboard - finish.

Course 54 – Northerly

Distance 8.8 nm



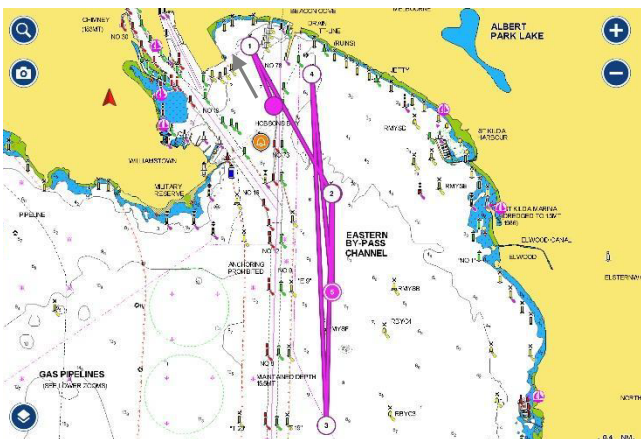
Start: West of Ch 74.

Finish: between RMYC C and Committee Vessel.

Start in a Northerly direction – R4 to starboard – RMYC C to starboard – R3 to port – east of passing marks Ch. 11, 9 and 71 – RMYC G to port – R3 to port – east of passing mark Ch. 11 – finish.

Course 55 – Northerly

Distance 11.5 nm



Start: West of Ch 74.

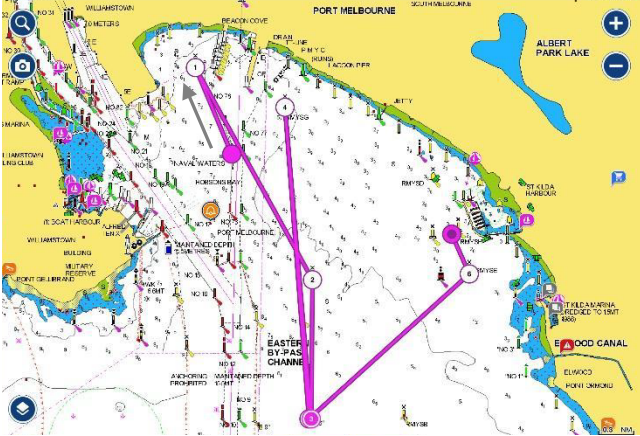
Finish: between RMYC C and Committee Vessel.

Start in a Northerly direction – R4 to starboard – RMYC C to starboard – R2 to port – east of passing marks Ch. 7, 9, 11 and 71 – RMYC G to port – R3 to port – east of passing mark Ch. 11 – finish.

Brass Monkey Division 1

Course 60 – Northerly

Distance 9.5 nm



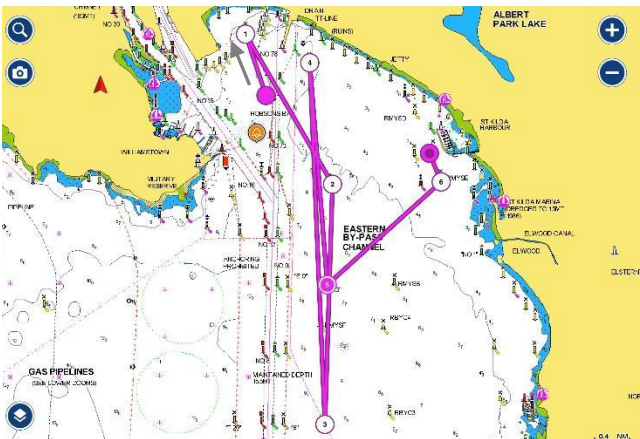
Start: West of Ch 74.

Finish: between the RMY tower and RMY A.

Start in a Northerly direction – R4 to starboard – RMY C to starboard – R3 to port – east of passing marks Ch.11, 9 and 71 – RMY G to port – R3 to port – RMY E to port – finish.

Course 61 – Northerly

Distance 12.3 nm



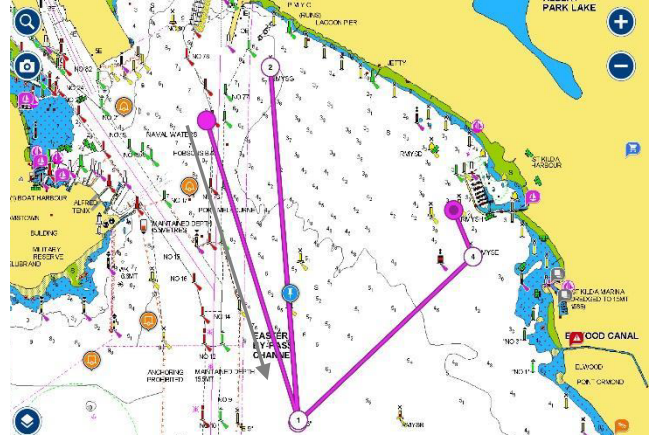
Start: Near Ch 74.

Finish: between the RMY tower and RMY A.

Start in a Northerly direction – R4 to starboard – RMY C to starboard – R2 to port – east of passing marks Ch. 7, 9, 11 and 71 – RMY G to port – R3 to port – RMY E to port – finish.

Course 62 – Southerly

Distance 8.3 nm



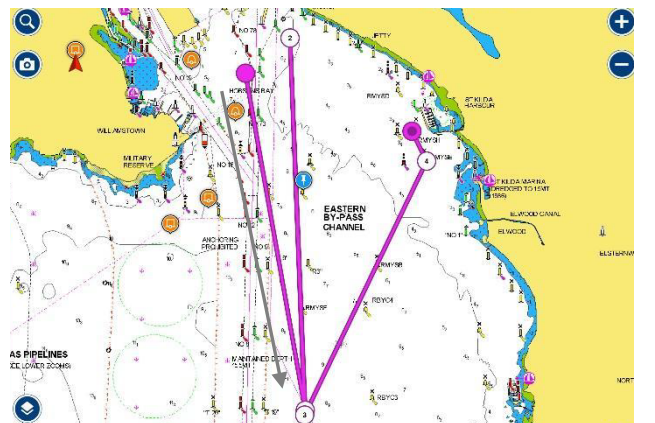
Start: West of Ch 74.

Finish: between the RMY tower and RMY A.

Start in a southerly direction, east of bounding marks Ch 71, 11, 9 and 7 – R3 to port - RMY G to port - east of bounding marks Ch 71, 11, 9 and 7 - R3 to port – RMY E to port – finish.

Course 63 – Southerly

Distance 13.6 nm



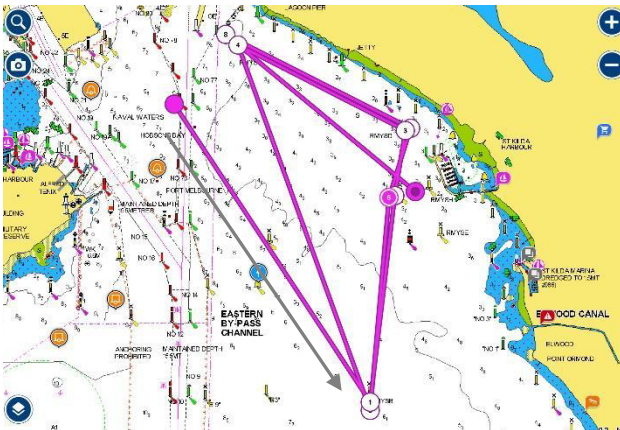
Start: West of Ch 74.

Finish: between the RMY tower and RMY A.

Start in a southerly direction, east of bounding marks Ch 71, 11, 9 and 7 – R2 to port – RMY G to port – east of bounding marks Ch 71, 11, 9 and 7 - R2 to port – RMY E to port – finish

Course 64 – South-East

Distance 12.5 nm



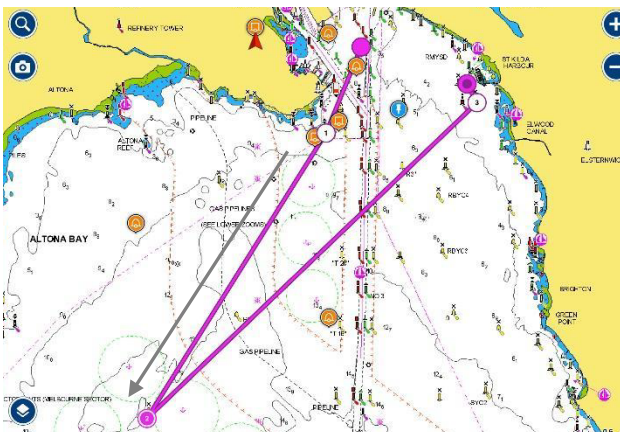
Start: West of Ch 74.

Finish: between the RMYS tower and RMYS A.

Start in a south-easterly direction - east of bounding mark Ch.71 – RMYS B to port – RMYS A to starboard – RMYS D to port – RMYS G to port – RMYS B to port – RMYS A to starboard – RMYS D to port - RMYS G to port – finish.

Course 65 – South-West

Distance 13.8 nm



Start: West of Ch 74.

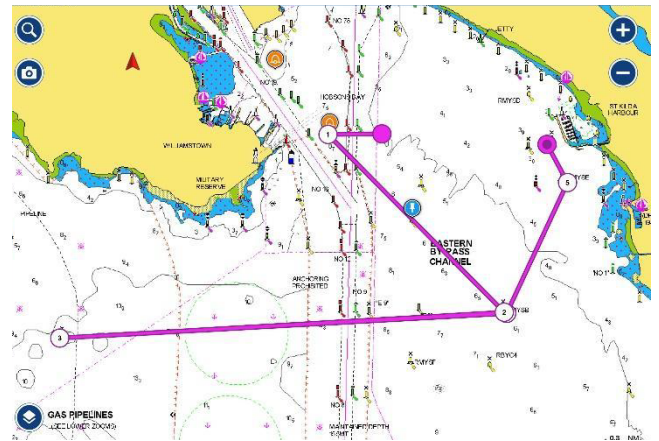
Finish: between the RMYS tower and RMYS A.

Start in a south westerly direction – Gellibrand Shoal mark to starboard – Outer Anchorage to port – RMYS E to port – finish.

Shorten Course Option – delete 'Outer Anchorage to port' and replace with 'P2 to port'.

Course 66 – Westerly

Distance 10.8 nm



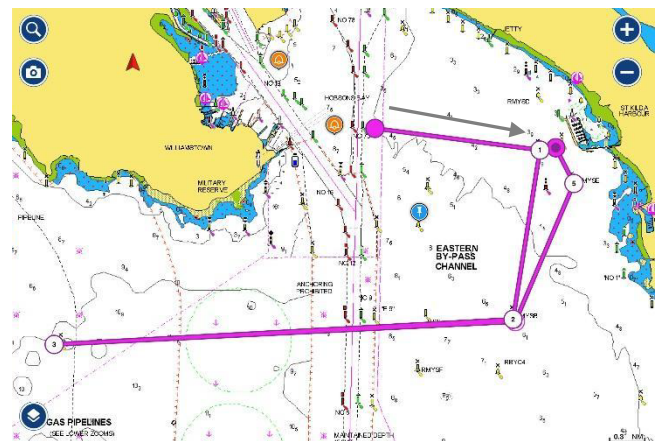
Start: East of Ch 73.

Finish: between the RMYS tower and RMYS A.

Start in a westerly direction – V mark to port – RMYS B to starboard – P3 to port – RMYS B to port - RMYS E to port – finish.

Course 67 – Easterly

Distance 11.7 nm



Start: East of Ch 73.

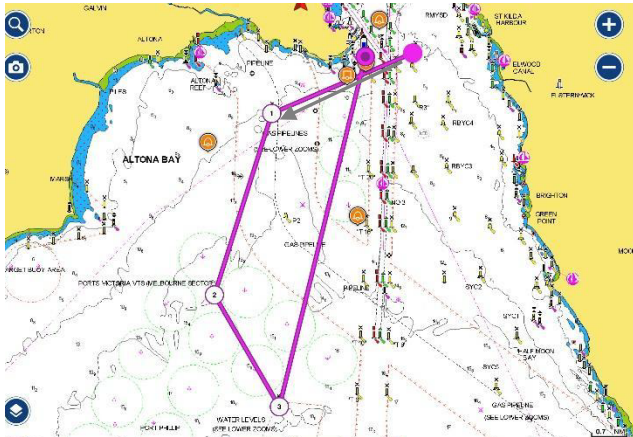
Finish: between the RMYS tower and RMYS A.

Start in an easterly direction – RMYS A to starboard – RMYS B to starboard - P3 to port – RMYS B to port - RMYS E to port – finish.

HBYC Two-Handed, Club Courses

Course 70 – South-Westerly

Distance 16.3 nm



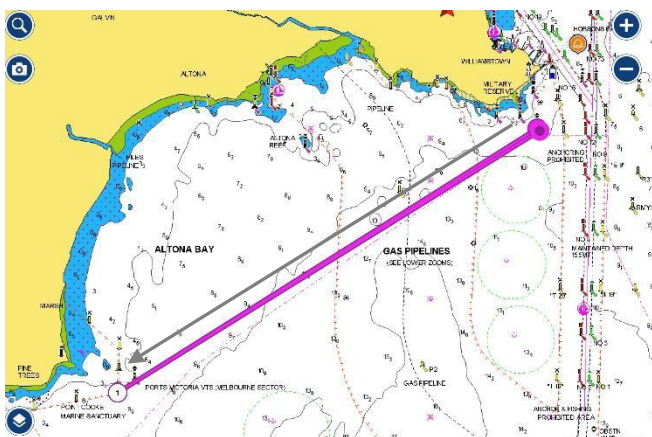
Start: Near RMYS C.

Finish – line projected between the Williamstown Timeball Tower and T28 passing T28 to starboard.

Start in a South Westerly direction – P3 to port - Outer Anchorage to port – Spoil Ground to Port – Gellibrand Shoal Mark to port – finish.

Course 71 – South Westerly

Distance 11.2 nm

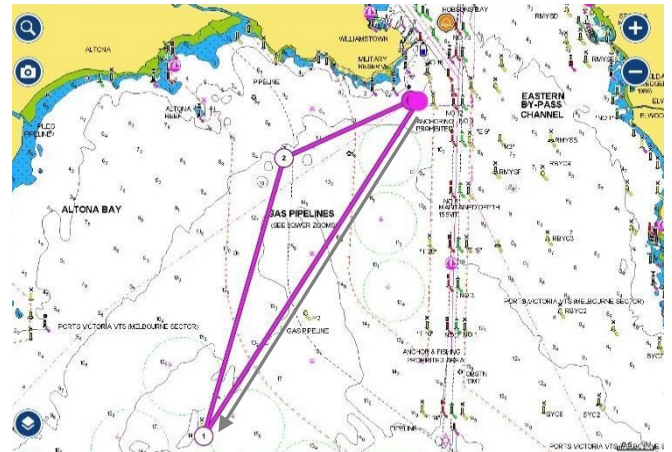


Start/Finish: South. of Gellibrand Shoal Mark.

Start in a south westerly direction - east of bounding mark Pt Cook East Cardinal Mark - Pt Cook South Pile to port - finish.

Course 72 – Southerly

Distance 10.6 nm

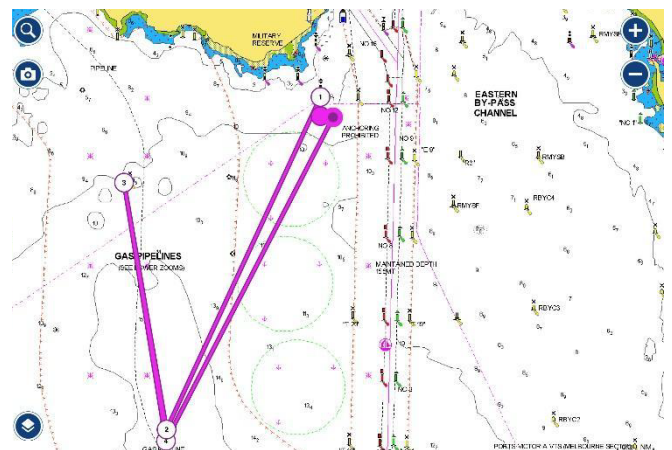


Start/Finish: South. of Gellibrand Shoal Mark

Start in a southerly direction - Outer Anchorage to starboard - P3 to starboard – finish.

Course 73 – Northerly

Distance 10.4 nm



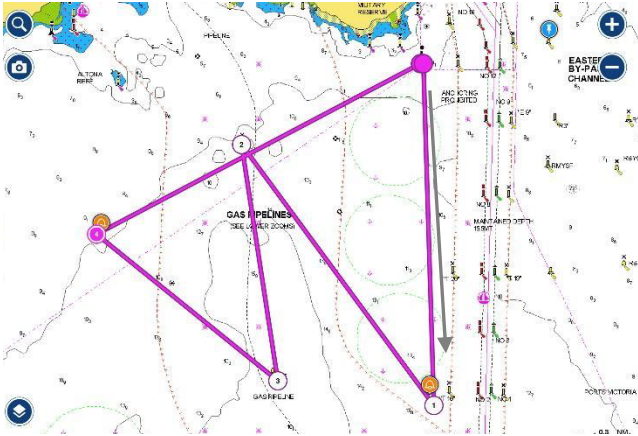
Start/Finish: 750m South of Gellibrand Shoal Mark

Start in a northerly direction - A Mark to Port - P2 to starboard - P3 to starboard - P2 to port – finish.

RYCV Club Courses

Course 80 – Southerly

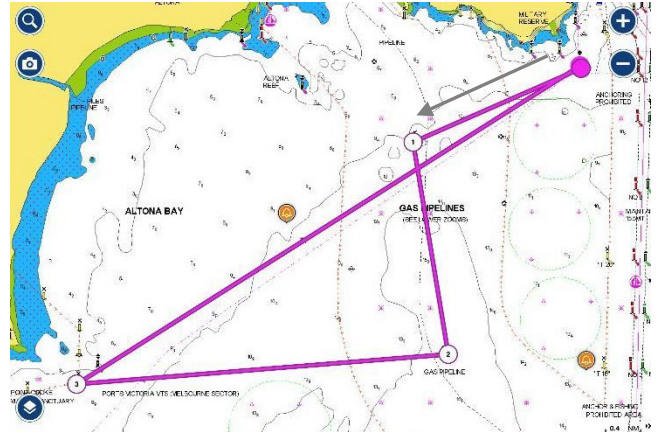
Distance 13.4 nm



Start/Finish – South of Gellibrand Shoal Mark
Start in a Southerly direction – Uniform mark to starboard - P3 to port – P2 to starboard – Zulu mark to starboard - finish.

Course 82 – Westerly

Distance 13.4 nm



Start/Finish - South of Gellibrand Shoal Mark
Start in a Westerly direction – P3 to port – P2 to starboard – Pt Cook Sanctuary Limit mark to starboard - finish.

Course 81 – Southerly

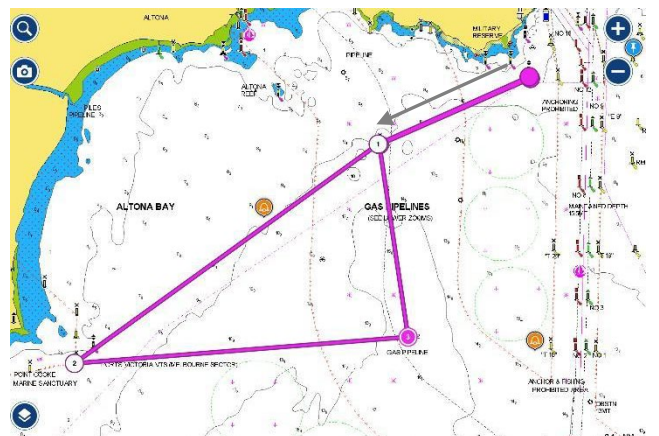
Distance 11.7 nm



Start/Finish - South of Gellibrand Shoal Mark
Start in a Southerly direction – P2 to starboard – Zulu mark to starboard – P3 to starboard – P2 to port - finish.

Course 83 – Westerly

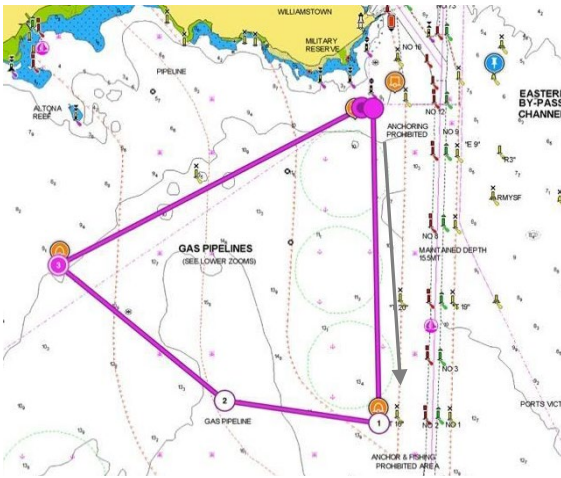
Distance 13.4 nm



Start/Finish - South of Gellibrand Shoal Mark
Start in a Westerly direction – P3 to port - Pt Cook Sanctuary Limit mark to port – P2 to port – P3 to starboard - finish.

Course 84 – Westerly

Distance 9.5 nm

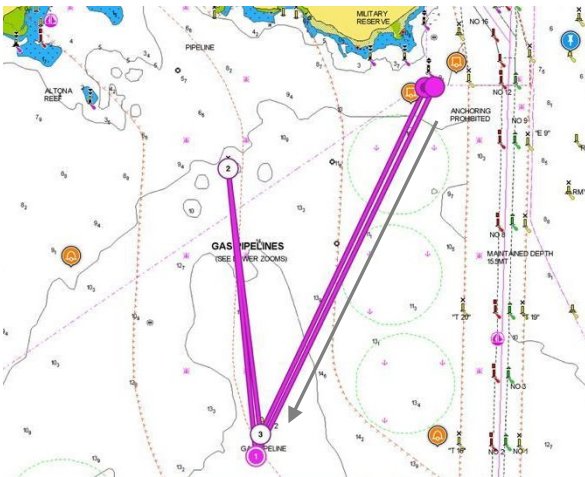


Start/Finish - South of Gellibrand Shoal Mark

Start in a Southerly direction – Uniform mark to starboard – P2 to starboard – Zulu mark to starboard – finish.

Course 85 – Westerly

Distance 10.9 nm



Start/Finish - South of Gellibrand Shoal Mark

Start in a Southerly direction – P2 to starboard – P3 to starboard – P2 to port – finish.

Marks

The mark positions and descriptions are approximate and a guide only and must not be used for navigational purposes.

Detailed locations of marks and features within Port Phillip are depicted on the relevant Charts AUS143, AUS154 and AUS155, as modified by Notices to Mariners.

A Mark

Laid mark set 250m south of Gellibrand Shoal Mark

Carrum #2		
Special Purpose Buoy	38 03.04S	145 04 52E
Centre Mark		
Special Purpose Buoy – X top mark	38 03.51S	144 52.21E
Channel 7 (Ch.7)		
Port of Melbourne Channel Pile	37 53.83S	144 55.72E
Channel 9 (Ch.9)		
Port of Melbourne Channel Pile	37 53.19S	144 55.75E
Channel 11 (Ch.11)		
Port of Melbourne Channel Pile	37 52.69S	144 55.76E
Channel 17a (Ch.17a)		
Port of Melbourne Channel Pile	37 51.54S	144 55.18E
Channel 19 (Ch.19)		
Port of Melbourne Channel Pile	37 51.48S	144 55.00E
Channel 71 (Ch.71)		
Port of Melbourne Channel Pile	37 52.06S	144 55.76E
Channel 72 (Ch.72)		
Port of Melbourne Channel Pile	37 51.72S	144 55.67E
Channel 73 (Ch.73)		
Port of Melbourne Channel Pile	37 51.72S	144 55.77E
Channel 74 (Ch740)		
Port of Melbourne Channel Pile	37 51.30S	144 55.68E
Channel 75 (Ch.75)		
Port of Melbourne Channel Pile	37 51.29S	144 55.80E
Channel 76 (Ch.76)		
Port of Melbourne Channel Pile	37 51.09s	144 55.62E
Gellibrand Shoal Mark		
An East Cardinal Mark	37 52.56S,	144 54.90E
Outer Anchorage		
A pile with a light frame	37 56.91S	144 51.49E
P2		
A yellow buoy marked P2	37 55.46S	144 53.19E
P3		
A pile with light frame	37 53.38S	144 52.85E
Pt Cook East Cardinal Mark		
An East Cardinal Mark	37 55.58S	144 48.92E
Pt Cook Sanctuary Limit Mark		
Yellow special purpose beacon	37 55.74S	144 48.69E
Pt Cook South Pile		
Yellow Pile, top mark shape - X shape	37 55.74S	144 48.69E
R2		
Yellow light Buoy marked R2	37 54.54S	144 56.34E
R3		
Yellow light Buoy marked R3	37 53.10S	144 56.23E

R4		
Yellow Buoy located	37 50.70S,	144 55.36E
RMYS A		
A yellow Special Purpose Buoy	37 51.90S	144 57.47E
RMYS B		
A yellow Special Purpose Buoy	37 53.18S	144 57.20E
RMYS C		
A yellow Special Purpose Buoy	37 52.19S,	144 56.41E
RMYS D		
A yellow Special Purpose Buoy	37 51.48S,	144 57.47E
RMYS E		
A yellow Special Purpose Buoy	37 52.15S,	144 57.79E
RMYS F		
A yellow Special Purpose Buoy	37 53.59S	144 56.30E
RMYS G		
A yellow Special Purpose Buoy	37 51.000S	144 56.25E
SB3		
Special Purpose or General Buoy	37 52.48S	144 56.31E
Spoil Ground		
A yellow buoy	37 59.05S	144 53.05E
SYC 5		
Special Purpose Buoy – X top mark	37 58.81S	144 58.38E
T25		
Yellow Transit Lane Mark	37 52.48S	144 55.91E
T28		
Yellow Transit Lane Mark	37 52.31S	144 55.19E
Uniform		
RYCV laid mark	37 55.64S	144°54.97E
V Mark (Volvo Finish mark)		
Yellow Special Purpose Buoy	37 51.80S	144 55.50E
Xray		
RYCV laid mark	37 51.28S	144 54.97E
Zulu		
RYCV laid mark	37 54.20S	144 51.26E