

Supplementary Sailing Instruction:

Fish and Chip Cruise

H1 Class Flags.

Combined Fleet

No flag

H2 The Start

Between the Orange mark and the RYCV Start Box. Skippers may start the event any time between 17.30hrs and 18.00hrs

The Courses

Competitors should be aware of the shipping movements that can occur at any time and are reminded to keep clear of shipping within Hobsons Bay and the Williamstown and Port Melbourne Channels.

All boats are referred to Clause 9 (Safety Regulations) of the Primary Sailing Instructions (Harbour Master Directions, Melbourne – Section 5)

Motors may be utilized for this event.

Course

Cross the main shipping channel in a perpendicular manner and be aware and avoid contact and interference with all commercial shipping, pass ch 19, ch 19a and ch 17A to starboard, pass V mark (port) then to finish.

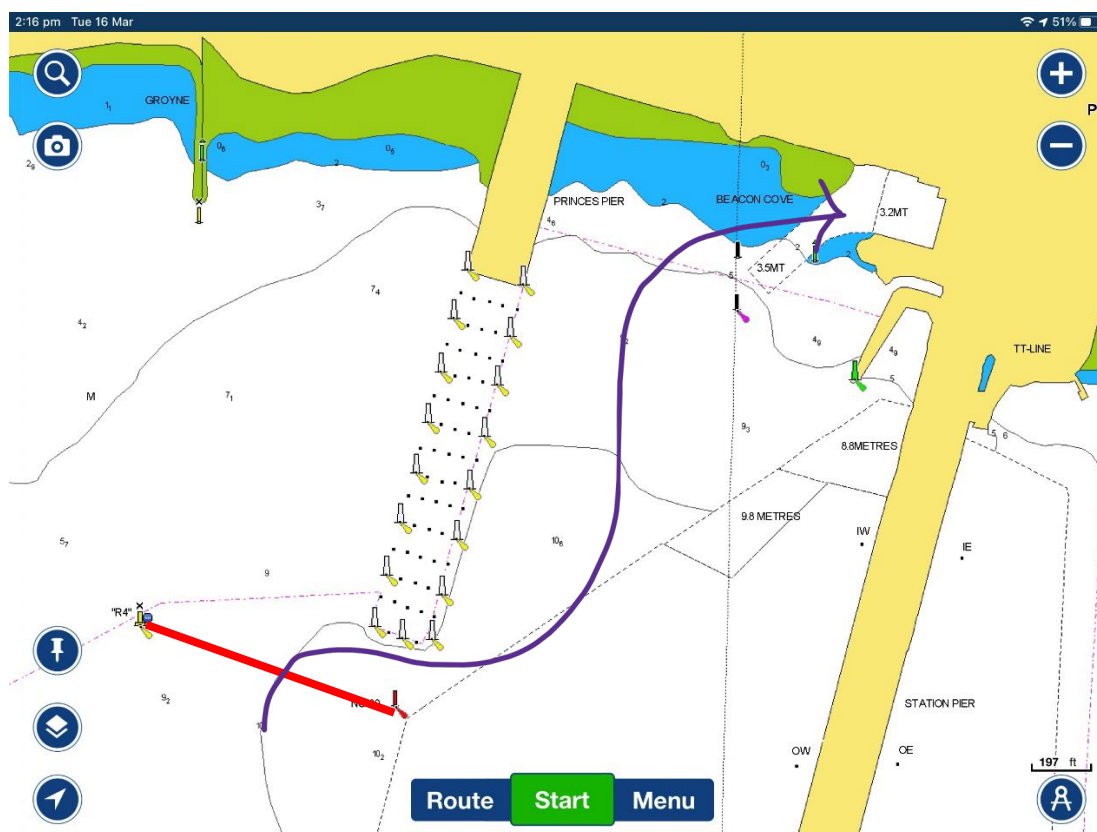


H3 The Finish

Between R4 and Channel Mark 80

After crossing the finish line proceed to the Fish and Chip shop at the start of Station Pier. Berth adjacent to pier, raft up is MANDATORY. Fish and Chips are available from adjacent shop 'D'lish Fish'.

<https://dlishfish.com/>



H4 Prizes

Prizes may be given at the discretion of Hobsons Bay Yacht Club.

Important

Record the time taken in minutes and seconds and shout them to the Event Coordinator as times are trophy dependent, however these might be totally ignored...

Trophies

The Manager has donated trophies.

They shall be awarded to the boats that complete the Course in a time calculated by a complex formula known only by the Handicappers assistant or by some other means...

Note

This is an official Club organized event so skippers please.

Enter the Race on TopYacht Jellis Craig Thursday Twilight

Ensure you complete a Crew Declaration, so the Race Co-Ordinator is aware of the boats who are competing.

Check the HBYC website at 15.00hrs to confirm the race is proceeding, in the event of poor weather conditions.