

Supplementary Sailing Instructions - F

John Neilson Long Distance Series (PPNYC Long Distance)

| | | | |
|-----------|---------------|-------------------------------------|------------|
| F1 | Format | Race 1 Portarlington Passage Race | Appendix A |
| | | Race 2 Henry Press Trophy Race | Appendix B |
| | | Race 3 Mornington Passage Race | Appendix C |
| | | Race 4 St Leonards Passage Race | Appendix D |
| | | Race 5 Wyndham Harbour Passage Race | Appendix E |



F2 **Class Flags** Combined Fleet - Flag R

F3 **Crew Declaration link** <http://tymob.net.au/1828>

F4 **Return Sail Post Race (Destination/Passage races only)**

Boats failing to undertake the following will be Disqualified (DSQ) from the race without hearing.

| | |
|---|--|
| 1 - within one hour of finishing/retiring Advise your intention to either stay overnight at the destination or return to a boats home port or safe harbour. | SMS the Race Mobile - 0474 079 202 <u>Information Required</u> - Boat Name / Sail Number - Staying overnight / Returning to "destination" - ETA |
| 2 - upon arrival at home port or safe harbour Confirm your safe arrival. | SMS the Race Mobile - 0474 079 202 <u>Information Required</u> - Boat Name / Sail Number - Confirmation of arrival |

This shall include boats that do not finish a race or have retired.

If considering returning to home port on the same day, boats must be adequately equipped to comply with night sailing. AS Safety Category 5N highly recommended.

Single hander night returns are an increased risk and are discouraged.

F5 **The Start**

Races will be started by using RRS 26 with the warning signal five minutes before the starting signal.

The starting line may be between a staff displaying an orange flag on the Race Committee Vessel at the starboard end and the course side of the 'port-end' starting mark, an orange cylindrical buoy or fixed mark.

A boat that does not start within 10 minutes after her starting signal will be scored Did Not Start (DNS) without a hearing. This changes RRS 63.1, A4 and A5.

In addition to the mandatory TopYacht Crew Declaration, all boats shall 'sign on' by sailing on a starboard tack past the stern of its Race Committee Vessel prior to the first warning signal, hail her sail number and receive an acknowledgement from the Race Committee Vessel.

F6 **The Courses**

Competitors should be aware of the shipping movements that can occur at any time and are reminded to keep clear of shipping within Hobsons Bay and the Williamstown and Port Melbourne Channels.

All boats are referred to App. A (Commercial Shipping) of the HBYC Standard Sailing Instructions

Refer to Appendices below for all courses

F7 **Time Limit**

The time limit for the first boat to sail her course and finish shall be 17:00. If no boat finishes within the time limit the race shall be abandoned. Boats still racing after 20:00 shall be scored Did Not Finish (DNF) without hearing. This changes RRS 35, A4 and A5

F8 Prizes

The John Neilson Series Trophy shall be given to the first placed PHS HBYC boat in the series.

The first HBYC placed boat shall be given the relevant Trophy as follows.

| | |
|---------------------------------------|---|
| Race 1 – Portarlington Passage Race | Walter Paton Memorial Trophy (PHS) Alec Nelson Trophy (AMS) |
| Race 2 – Henry Press Trophy Race | Henry Press Trophy (PHS) Stan Gibson Trophy (AMS) |
| Race 3 – Mornington Passage Race | Mornington Cup (PHS) Club Race Trophy (AMS) |
| Race 4 – St Leonards Passage Race | Don Thompson Trophy (PHS) Michael Wilson Trophy (AMS) |
| Race 5 – Wyndham Harbour Passage Race | Vice Commodores Cup (PHS) Club Member of the Year Trophy (AMS) |

Additional prizes shall be given at the discretion of Hobsons Bay Yacht Club.

Appendix A - Scotchmans Hill Portarlington Passage Race

SCOTCHMANS HILL

BELLARINE PENINSULA
VICTORIA
ESTABLISHED 1982

A1 Marks Refer to Sailing Instruction - Attachment 1 – Courses and Marks

A2 Course Start Vicinity of Ch Mark 71
Gellibrand Shoal Mark To starboard,
Finish Portarlington Pier

A3 Finish

The finishing line shall be between the staff displaying a blue flag on the Race Committee Vessel which may be situated approximately 100m from the north-west corner of Portarlington Pier.

Boats shall finish in a south-westerly direction.

Alternatively, Race Officials may finish the race from Portarlington Pier displaying a blue flag indicating a virtual line extending 100 metres from the north-western corner of the pier on a bearing of approximately 315 degrees. See Diagram 1 below.

After 19:00, or in the event there are no race officials on station, boats must record their own time and SMS time to the Race mobile 0474 079 202.

Competitors should standardise their watches using the local time displayed on a GPS.

BE AWARE THERE IS A BOATING EXCLUSION ZONE TO THE SOUTH-WEST OF THE FINISHING LINE



A4 Radio Position Reporting Schedule

The primary radio channel for race communications shall be **VHF Channel 69**.

Radio Schedules for the race shall be as follows.

- **On approaching the finish (200 metres) call VHF Channel 69 to confirm the boat's name and sail number.**

If a boat is not able to make contact for a position report on Channel 69 at the times indicated on the radio schedule above, she shall SMS her sail number and position to HBYC Race Control (0474 079 202) at the scheduled times.

All boats which retire shall report to Race Control by radio Ch 69 or SMS Race Mobile (0474 079 202) upon making the decision to retire, and within one (1) hour of reaching its home club

Appendix B - Henry Press Trophy Race

B1 Marks Refer to Sailing Instruction - Attachment 1 – Courses and Marks

B2 Course **Course 1** – approx. distance 25.2 nm

| | |
|-----------------------|--------------------|
| Start | Vicinity of RMYS C |
| Outer Anchorage | to port |
| Centre mark | to port |
| P2 | to starboard |
| Gellibrand Shoal mark | to port |
| Finish | |

Course 2 – approx. distance 28nm

| | |
|-----------|--------------------|
| Start | Vicinity of RMYS C |
| SYC 5 | to port |
| Carrum #2 | to port |
| SYC 5 | to starboard |
| RMYS C | to port |
| Finish | |

B3 The Finish

Course 1 - The finish shall be a line projected from the Williamstown 'Timeball Tower' to Transit Mark T28, passing T28 to starboard.

Boats shall finish in a north-easterly direction.

Course 2 - The finish line will be between Ch Mk 19 and the Committee Boat.

Boats shall finish in a northerly direction.

B4 Radio Position Reporting Schedule

The primary radio channel for race communications shall be **VHF Channel 69**.

Radio Schedules for the race shall be as follows.

All boats shall radio HBYC Race Control on the appropriate radio channel at the following marks, dependent upon Course being raced.

Course 1 - Centre Mark Gellibrand Shoal Mark.

Course 2 - Carrum #2 RMYS C

Radio Channel shall be 69 for all reports.

At each radio schedule boats shall call HBYC Race Control advising their sail number, boat name, position, number of boats in the vicinity and identity if known.

If a boat is not able to make contact for a position report on Channel 69 at the times indicated on the radio schedule above, she shall SMS her sail number and position to HBYC Race Control (0474 079 202) at the scheduled times.

All boats which retire shall report to Race Control by radio Ch 69 or SMS Race Mobile (0474 079 202) upon making the decision to retire, and within one (1) hour of reaching its home club

Appendix C - Wyndham Harbour Passage Race

| | | | |
|-----------|---------------|---|----------------------------|
| C1 | Marks | Refer to Sailing Instruction - Attachment 1 – Courses and Marks | |
| C2 | Course | Start | Vicinity of Ch Mark 73 |
| | | Gellibrand Shoal Mark | to starboard |
| | | P3 | to port |
| | | Spoil Ground | to starboard |
| | | Outer anchorage | to port |
| | | Finish | Wyndham Harbour breakwater |

C3 Finish

The finishing line shall be an imaginary line between the staff displaying a blue flag on the committee vessel and the western corner of the Wyndham Harbour breakwater or an imaginary line extending from that corner to the Southeast.

Boats shall finish in a south-westerly direction.

A boat may be on station, flying a blue finish flag.

In the event there are no race officials on station, boats must record their own time and SMS time to the Race mobile 0474 079 202

Competitors should standardise their watches using the local time displayed on a GPS.



C4 Radio Position Reporting Schedule

The primary radio channel for race communications shall be **VHF Channel 69**.

Radio Schedules for the race shall be as follows.

- **On approaching the finish (200 metres) call VHF Channel 69 to confirm the boat's name and sail number.**

If a boat is not able to make contact for a position report on Channel 69 at the times indicated on the radio schedule above, she shall SMS her sail number and position to HBYC Race Control (0474 079 202) at the scheduled times.

All boats which retire shall report to Race Control by radio Ch 69 or SMS Race Mobile (0474 079 202) upon making the decision to retire, and within one (1) hour of reaching its home club

Appendix D - Mornington Passage Race

D1 Marks Refer to Sailing Instruction - Attachment 1 – Courses and Marks

D2 Course Start Vicinity of Ch Mark 71
 Proceed in a Southerly direction.
 Finish Mornington Pier

D3 Finish

The finishing line shall be a line between a black line on a yellow disc on the north-east face of the Mornington Yacht Club (MYC) Tower and the MYC finish mark, an orange barrel buoy which is outside the harbour limits and located approximately 275 metres east north - east of the Mornington Pier Light.

Boats crossing an extension of the finish line inside the Harbour Limit Clearance Buoy (Orange) shall be scored Did Not Finish (DNF) without hearing. This changes RRS 63.1, A4 and A5.

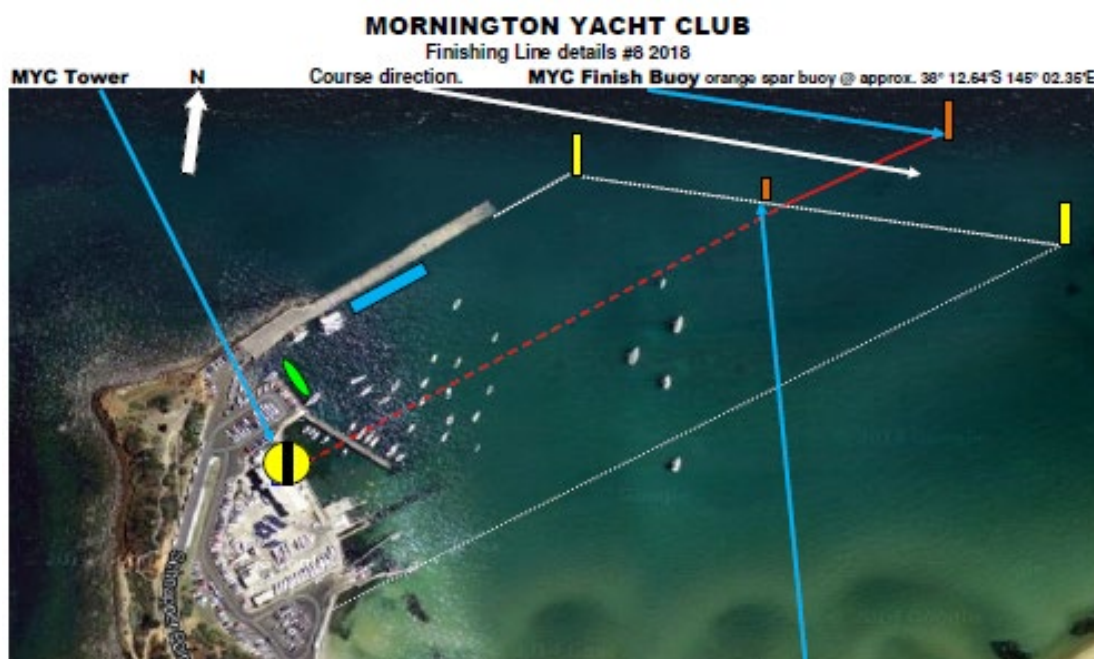
The Harbour Limit Clearance Buoy must be left to starboard.

Boats shall finish in a south easterly direction between the Finish mark (leave to port) and the race control tower.

Boats are requested to record their own times when finishing then check with officials of the Mornington Yacht Club. The Tower at Mornington Yacht Club will be manned until 19:00 hours.

Boats finishing after this time shall record their own times and SMS their finishing times to the Race mobile 0474 079 202.

Competitors should standardise their watches using the local time displayed on a GPS.



D4 Radio Position Reporting Schedule

The primary radio channel for race communications shall be **VHF Channel 69**.

Radio Schedules for the race shall be as follows.

- **On approaching the finish (200 metres) call VHF Channel 69 to confirm the boat's name and sail number.**

If a boat is not able to make contact for a position report on Channel 69 at the times indicated on the radio schedule above, she shall SMS her sail number and position to HBYC Race Control (0474 079 202) at the scheduled times.

All boats which retire shall report to Race Control by radio Ch 69 or SMS Race Mobile (0474 079 202) upon making the decision to retire, and within one (1) hour of reaching its home club

Appendix E - St Leonards Passage Race

E1 Marks Refer to Sailing Instruction - Attachment 1 – Courses and Marks

E2 Course

| | |
|-----------------------|------------------------|
| Start | Vicinity of Ch Mark 71 |
| Gellibrand Shoal Mark | To starboard |
| Finish | St Leonards Pier |

E3 Finish

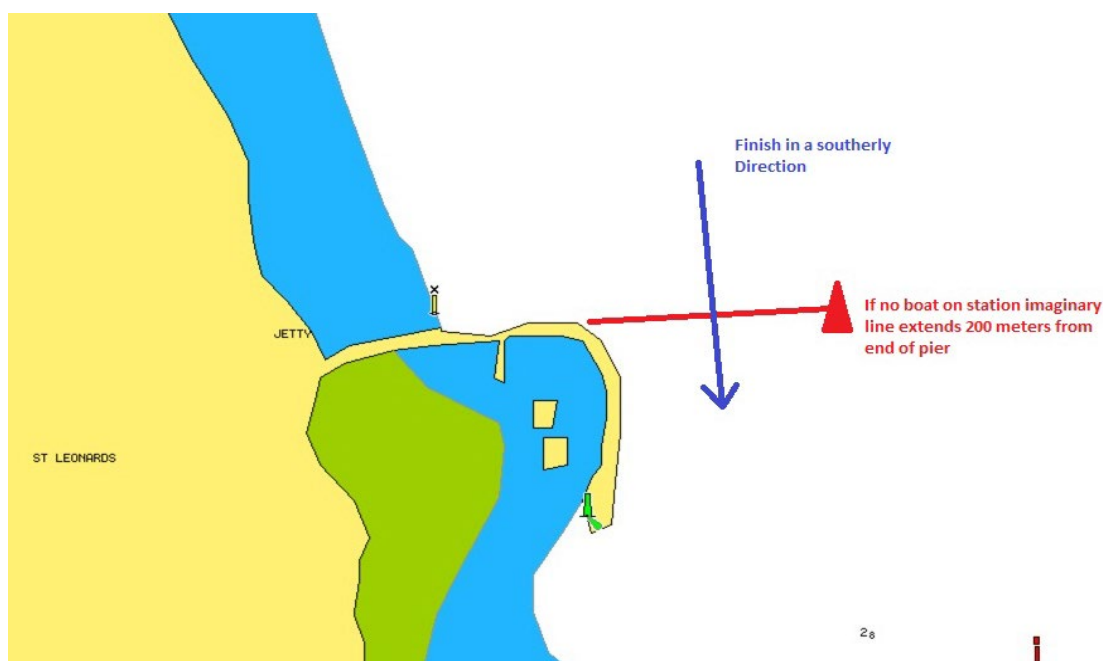
The finishing line shall be between the staff displaying a blue flag on the Race Committee Vessel which may be situated approximately 200m from the eastern corner of the St Leonards Pier on a bearing of approximately 90 degrees.

Boats shall finish in a southerly direction.

Alternatively, Race Officials may finish the race from the St Leonards Pier, displaying a blue flag with a virtual line extending 200 metres from the north-eastern corner of the Pier on a bearing of approx. 90 degrees.

In the event there are no race officials, boats must record their own time and SMS time to the Race mobile 0474 079 202.

Competitors should standardise their watches using the local time displayed on a GPS.



E4 Radio Position Reporting Schedule

The primary radio channel for race communications shall be **VHF Channel 69**.

Radio Schedules for the race shall be as follows.

- **On approaching the finish (200 metres) call VHF Channel 69 to confirm the boat's name and sail number.**

If a boat is not able to make contact for a position report on Channel 69 at the times indicated on the radio schedule above, she shall SMS her sail number and position to HBYC Race Control (0474 079 202) at the scheduled times.

All boats which retire shall report to Race Control by radio Ch 69 or SMS Race Mobile (0474 079 202) upon making the decision to retire, and within one (1) hour of reaching its home club