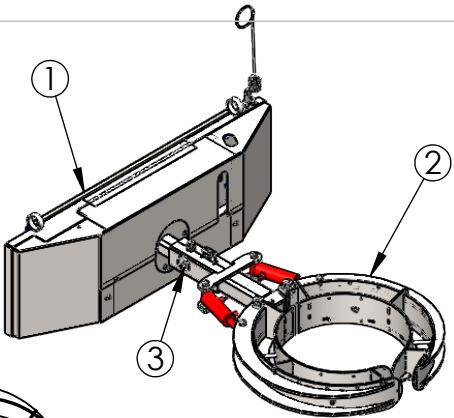
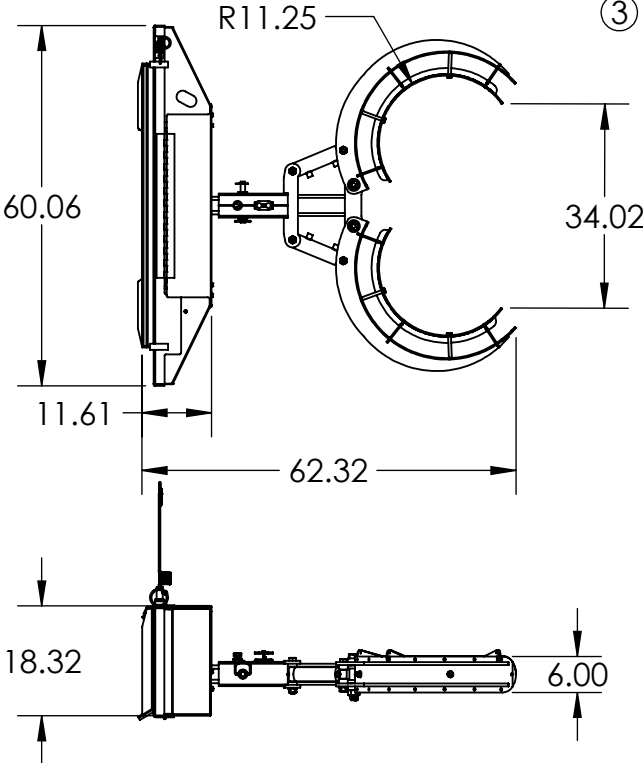
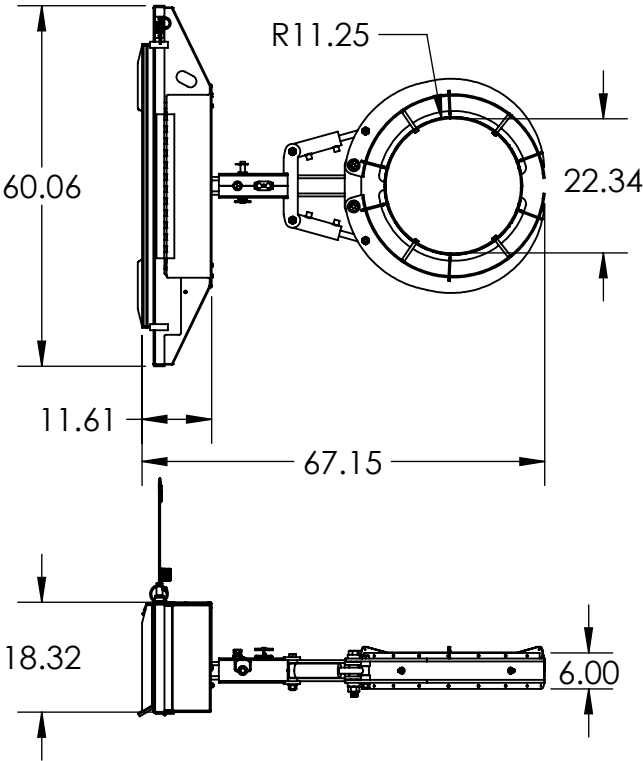


ITEM NO.	PART NUMBER	DESCRIPTION	QTY.
1	CDB-01-0010	ASSY, CHAIN BASE	1
2	CS-01-0023	ASSY, 110 GAL BARREL HANDLER W/ 55 GAL INSERTS	1
3	FA11197-01206	3/4" DIA 6-1/4"L STEEL HITCH PIN	1
4	HDW-00-0035	COTTER PIN	1



<div>PROPRIETARY AND CONFIDENTIAL</div> <div>THE INFORMATION CONTAINED IN THIS DRAWING IS THE SOLE PROPERTY OF EZ-SPOT-UR. ANY REPRODUCTION IN PART OR AS A WHOLE WITHOUT THE WRITTEN PERMISSION OF EZ-SPOT-UR IS PROHIBITED.</div>				UNLESS OTHERWISE SPECIFIED:	NAME	DATE	<div>EZ-SPOT-UR</div> <div>TITLE:</div> <div>110 GALLON BARREL HANDLER WITH CHAIN BASE</div> <div><div>SIZEA</div><div>DWG. NO. CS-01-0042-C - 110 GAL BH & CHAIN BASE WITH 55 GAL INSERTS</div><div>REV</div></div> <div><div>SCALE: 1:32</div><div>WEIGHT: 590.91 LBS</div><div>SHEET 1 OF 1</div></div>		
				DIMENSIONS ARE IN INCHES TOLERANCES: FRACTIONAL ± ANGULAR: MACH ± BEND ± TWO PLACE DECIMAL ± THREE PLACE DECIMAL ±	DRAWN	BEVAN			3/15/2017
					CHECKED				
					ENG APPR.				
					MFG APPR.				
					Q.A.				
			COMMENTS:						
			INTERPRET GEOMETRIC TOLERANCING PER:						
			MATERIAL						
		NEXT ASSY	USED ON	FINISH					
		APPLICATION		DO NOT SCALE DRAWING					