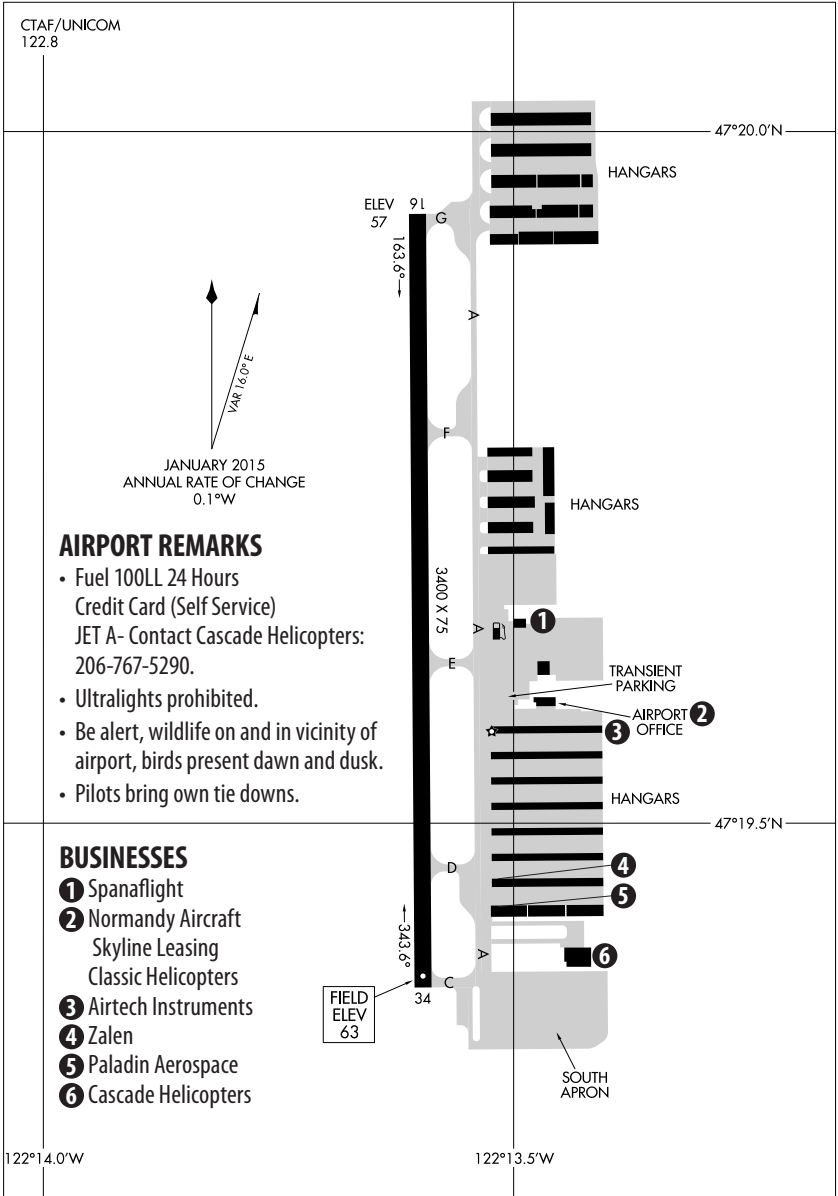


# AUBURN MUNICIPAL AIRPORT (S50)



## AIRPORT DATA

**CTAF & SayWeather:** 122.8

(3 Clicks for SayWeather Report)

**Seattle TRACON:** 206-214-4722

**On the Ground at S50:** 123.85

**Air (SEA South Flow):** 119.2

**Air (SEA North Flow):** 125.9

**Runway Length/Width:** 3,400' x 75'

**Asphalt Strength:** 12,500 lbs single wheel axle

**Navigation Aids:**

RWY 16: REIL, VASI GLIDE ANGLE 4.5°

RWY 34: REIL, VASI GLIDE ANGLE 4.0°

**Instrument Approach:** RNAV (GPS)-A

**Runway Lights:** Medium Intensity

**Taxiway Lights:** Medium Intensity