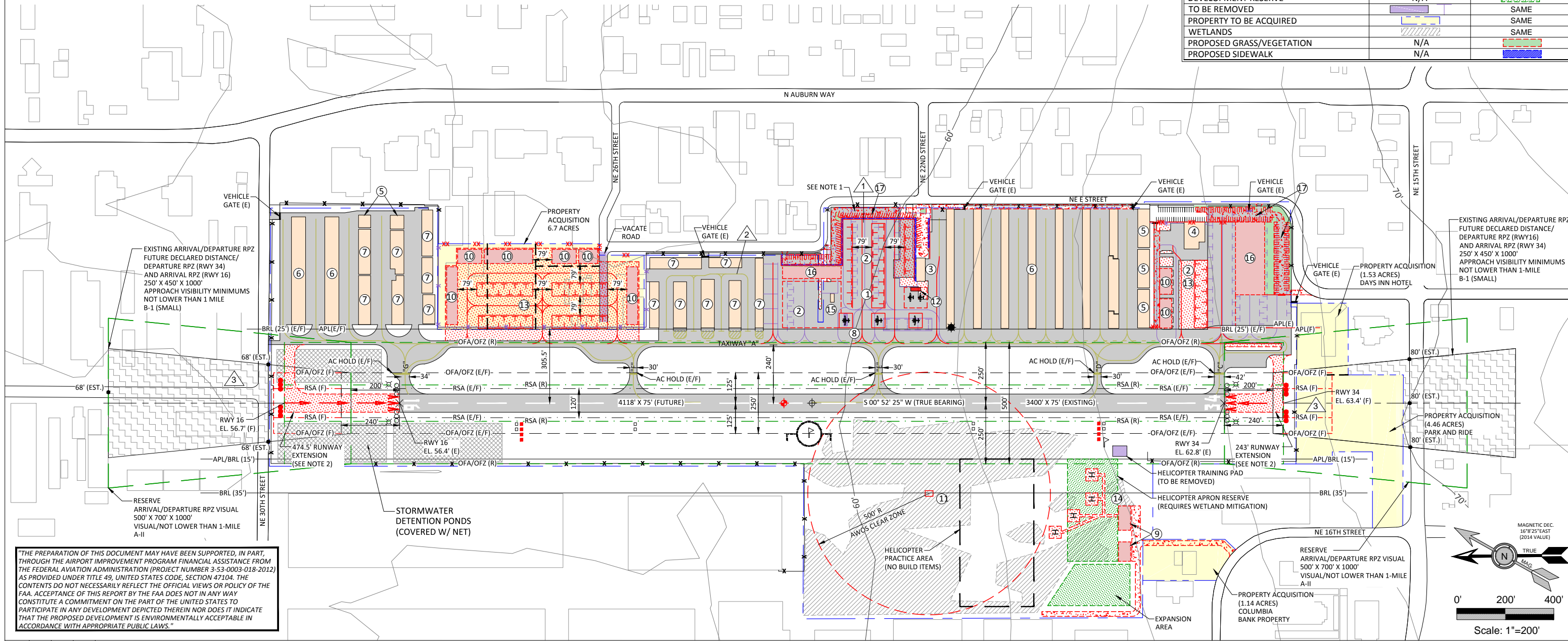


BUILDING/FACILITY KEY	
NO.	DESCRIPTION
1	TERMINAL / FBO APRON
2	SMALL AIRCRAFT TIEDOWN APRON (EXISTING)
3	BUILDING "506" AIRPORT MANAGER OFFICE (CITY OWNED)
4	AUBURN FLIGHT SERVICE FBO HANGAR (EXISTING)
5	TENANT OWNED CONVENTIONAL HANGAR (EXISTING)
6	CITY OWNED T-HANGAR (EXISTING)
7	TENANT OWNED T-HANGAR/EXECUTIVE HANGAR (EXISTING)
8	AVIATION FUEL STORAGE/ SELF FUELING AREA (EXISTING)
9	AVIATION USE BUILDINGS (FUTURE)
10	CONVENTIONAL HANGAR (FUTURE)
11	AWOS (FUTURE)
12	AIRCRAFT FUEL APRON (FUTURE)
13	AIRCRAFT PARKING APRON (FUTURE)
14	HELICOPTER PARKING POSITION (FUTURE)
15	OFFICE (EXISTING)
16	AIRPORT FBO/COMMERCIAL BUILDING (FUTURE)
17	VEHICLE PARKING (FUTURE)

- NOTES:**
- SEE TERMINAL AREA PLAN DRAWINGS (SHEETS 4 AND 5) FOR DETAILS ON FUTURE APRON CONFIGURATIONS.
  - FUTURE RUNWAY LENGTHS AVAILABLE FOR TAKEOFF AND LANDING WILL BE LIMITED BY DECLARED DISTANCES (TO BE PUBLISHED A/F/D). ADDITIONAL USEABLE RUNWAY PROVIDED BY BOTH ENDS TO BE CONFIGURED WITH DISPLACED THRESHOLDS.
  - THE EXISTING ARRIVAL/DEPARTURE RUNWAY PROTECTION ZONES (RPZ) FOR RUNWAY 16 AND 34 WILL BE MAINTAINED IN THEIR CURRENT LOCATIONS. THE END OF USEABLE RUNWAY FOR TAKEOFF WILL BE DETERMINED BY THE LOCATIONS OF THE EXISTING DEPARTURE RPZ FOR EACH RUNWAY END. DEPARTURE RPZ CONFIGURATIONS DETERMINED BY USE OF DECLARED DISTANCES TO MITIGATE UNACCEPTABLE INCOMPATIBLE LAND USES (PER AC 150/5300-13A).
  - ARC A-II RSA & OFA RESERVES DEPICTED FOR REFERENCE.
  - A-II RESERVE RPZ (500' X 700' X 1000') DEPICTED FOR REFERENCE. CONTINUED USE OF "SMALL AIRPLANES EXCLUSIVELY" RPZ (250' X 450' X 1000') SHOULD BE CONSIDERED FOR TYPICAL A-II SINGLE ENGINE TURBOPROPS (<12,000).
  - PROPERTY ACQUISITION APPROXIMATELY 13.83 ACRES TO BE PURSUED AS PARCELS AND FUNDING BECOME AVAILABLE.

NON STANDARD CONDITIONS			
NO.	ITEM	DESCRIPTION	DISPOSITION
1	TAXILANE OFA	CLEARANCE TO PARKED AIRCRAFT LESS THAN STANDARD	RECONFIGURE APRON
2	TAXILANE OFA	CLEARANCE TO ADJACENT HANGAR LESS THAN STANDARD	USE FAA ALTERNATIVE TAXILANE OFA CLEARANCE STANDARD BASED ON MAX AC WINGSPAN
3	OFA / OFZ / RSA	AREA PROVIDED BEYOND RUNWAY ENDS LESS THAN ADG I STANDARD	DISPLACED THRESHOLDS AND DECLARED DISTANCES USED TO PROVIDE STANDARD DIMENSIONS BEYOND RUNWAY ENDS FOR SPECIFIC OPERATIONS

LEGEND		
	EXISTING	FUTURE
BUILDINGS		
AIRFIELD PAVEMENT		
BUILDING RESTRICTION LINE (BRL)		
AIRCRAFT PARKING LINE (APL)		
AIRPORT PROPERTY LINE		
RUNWAY SAFETY AREA (RSA)		
OBJECT FREE AREA (OFA)		
OBSTACLE FREE ZONE (OFZ)		
TAXIWAY OBJECT FREE AREA (TOFA)		
RUNWAY PROTECTION ZONE (RPZ)		SAME
GROUND CONTOURS		SAME
AIRPORT REFERENCE POINT (ARP)		
RUNWAY END IDENTIFIER LIGHTS (REIL)		SAME
VISUAL GUIDANCE INDICATORS		
WIND INDICATOR		SAME
SEGMENTED CIRCLE WIND INDICATOR		SAME
FENCE		
BEACON		SAME
THRESHOLD LIGHTS		
ACCESS ROAD/VEHICLE PARKING	N/A	
AVIGATION EASEMENT		SAME
DEVELOPMENT RESERVE	N/A	
TO BE REMOVED		SAME
PROPERTY TO BE ACQUIRED		SAME
WETLANDS		SAME
PROPOSED GRASS/VEGETATION	N/A	
PROPOSED SIDEWALK	N/A	



"THE PREPARATION OF THIS DOCUMENT MAY HAVE BEEN SUPPORTED, IN PART, THROUGH THE AIRPORT IMPROVEMENT PROGRAM FINANCIAL ASSISTANCE FROM THE FEDERAL AVIATION ADMINISTRATION (PROJECT NUMBER 3-53-0003-018-2012) AS PROVIDED UNDER TITLE 49, UNITED STATES CODE, SECTION 47104. THE CONTENTS DO NOT NECESSARILY REFLECT THE OFFICIAL VIEWS OR POLICY OF THE FAA. ACCEPTANCE OF THIS REPORT BY THE FAA DOES NOT IN ANY WAY CONSTITUTE A COMMITMENT ON THE PART OF THE UNITED STATES TO PARTICIPATE IN ANY DEVELOPMENT DEPICTED THEREIN NOR DOES IT INDICATE THAT THE PROPOSED DEVELOPMENT IS ENVIRONMENTALLY ACCEPTABLE IN ACCORDANCE WITH APPROPRIATE PUBLIC LAWS."

NO.	DATE	BY	APPR	REVISIONS

**VERIFY SCALES**  
 BAR IS ONE INCH ON ORIGINAL DRAWING. 0" = 1" IF NOT ONE INCH ON THIS SHEET, ADJUST SCALES ACCORDINGLY.

**FEDERAL AVIATION ADMINISTRATION APPROVAL**  
 APPROVAL DATE: \_\_\_\_\_  
 SIGNATURE \_\_\_\_\_

**CITY OF AUBURN APPROVAL**  
 APPROVAL DATE: \_\_\_\_\_  
 SIGNATURE \_\_\_\_\_

**CENTURY WEST ENGINEERING CORPORATION**

BEND OFFICE  
 1020 SW ENKAY DRIVE #100  
 BEND, OR 97702  
 541.322.8962  
 541.382.2423 (FAX)  
 WWW.CENTURYWEST.COM

DESIGNED BY: DM  
 DRAWN BY: JLS  
 CHECKED BY: WMR  
 SCALE: AS SHOWN  
 DATE: MAY 2015  
 PROJECT NO: 12446001.01

**AUBURN MUNICIPAL AIRPORT**  
**AIRPORT LAYOUT PLAN**

FIGURE NO. -  
 SHEET NO. 3 OF 12