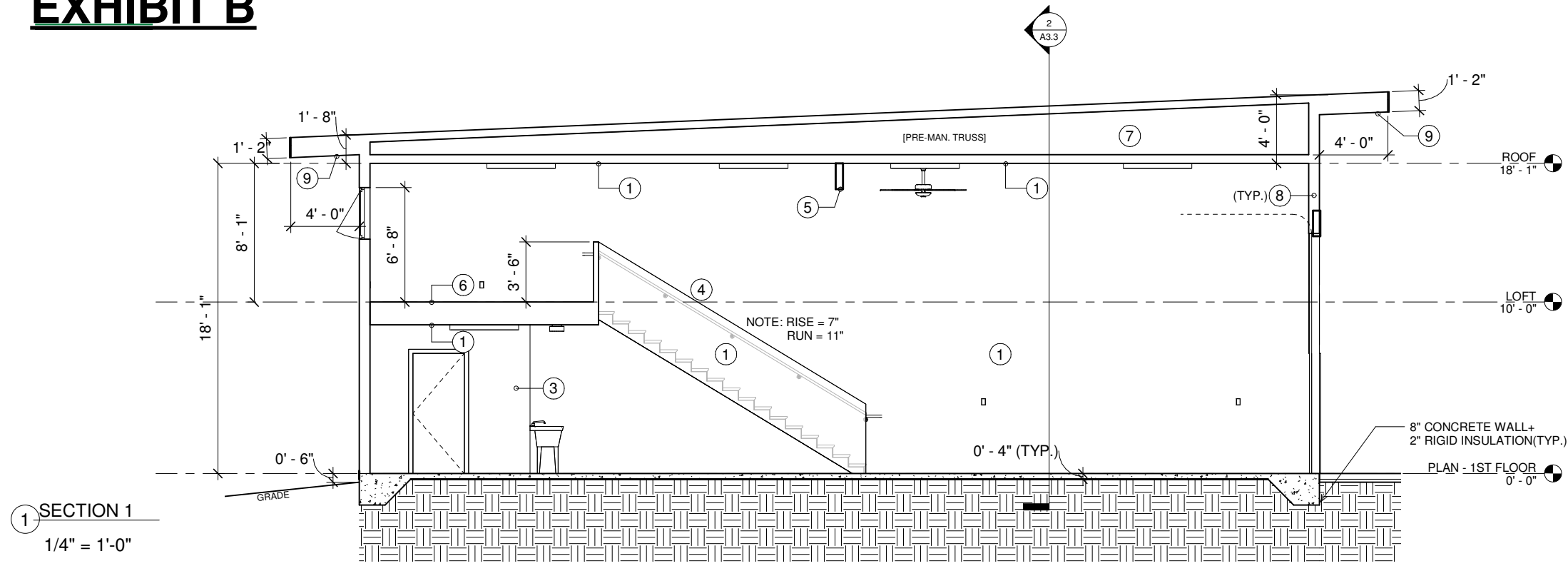


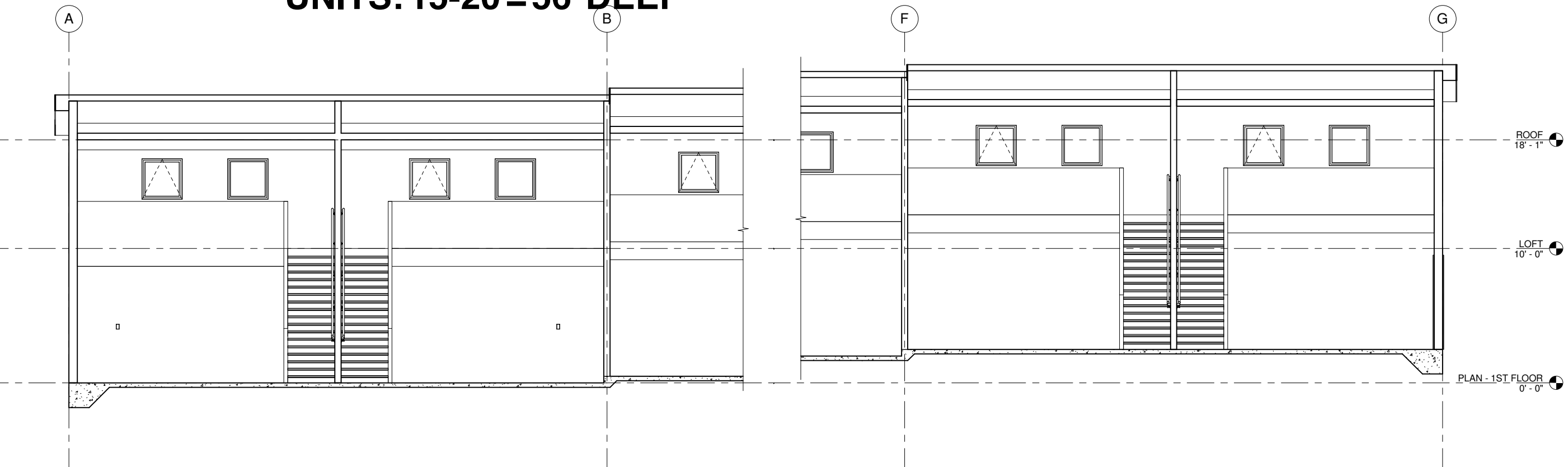
EXHIBIT B



SECTION 1
1/4" = 1'-0"

- SHEET NOTES:**
- (A) NOT USED
 - (B) BEAM
 - (1) 5/8" TYPE "X" GWB - PAINT
 - (2) NOT USED
 - (3) NOT USED
 - (4) STAIRS
 - (5) BEAM - (SEE STRUCTURAL)
 - (6) 3/4" OSB (T&G)
 - (7) R-38
 - (8) R-21
 - (9) 1 1/2" AIRSPACE w/ CONTINUOUS 1 1/2" VENT & BUG SCREEN AT 1/4" EAVES - TYP. (OR SMART PANEL)
- NOTE: SEE STRUCTURAL FOR FOUNDATION

UNITS: 1-14 = 50' DEEP
UNITS: 15-20 = 56' DEEP



SECTION 2
1/4" = 1'-0"

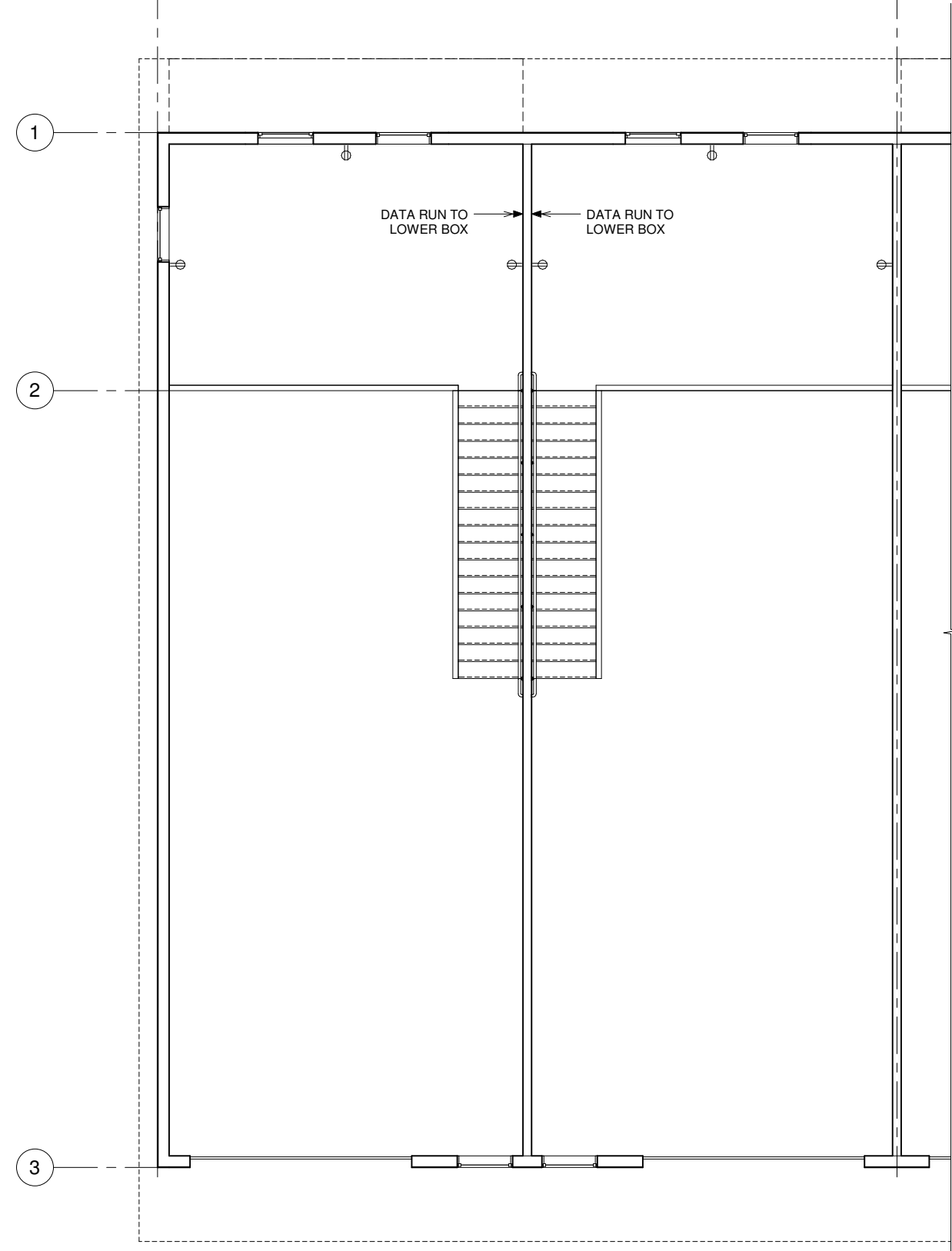
REV NO: XX DATE

SAJJ ARCHITECTURE, LLC
 SCOTT A. JONES 6375 KULIS DRIVE, ANCHORAGE, ALASKA 99502

EAGLE RIVER GARAGE CONDO
 EAGLE RIVER, ALASKA

DR: KBK
 CK: SAJ
 DT: 29 NOVEMBER 2018
 JB: PRISM
 DWG: SECTION

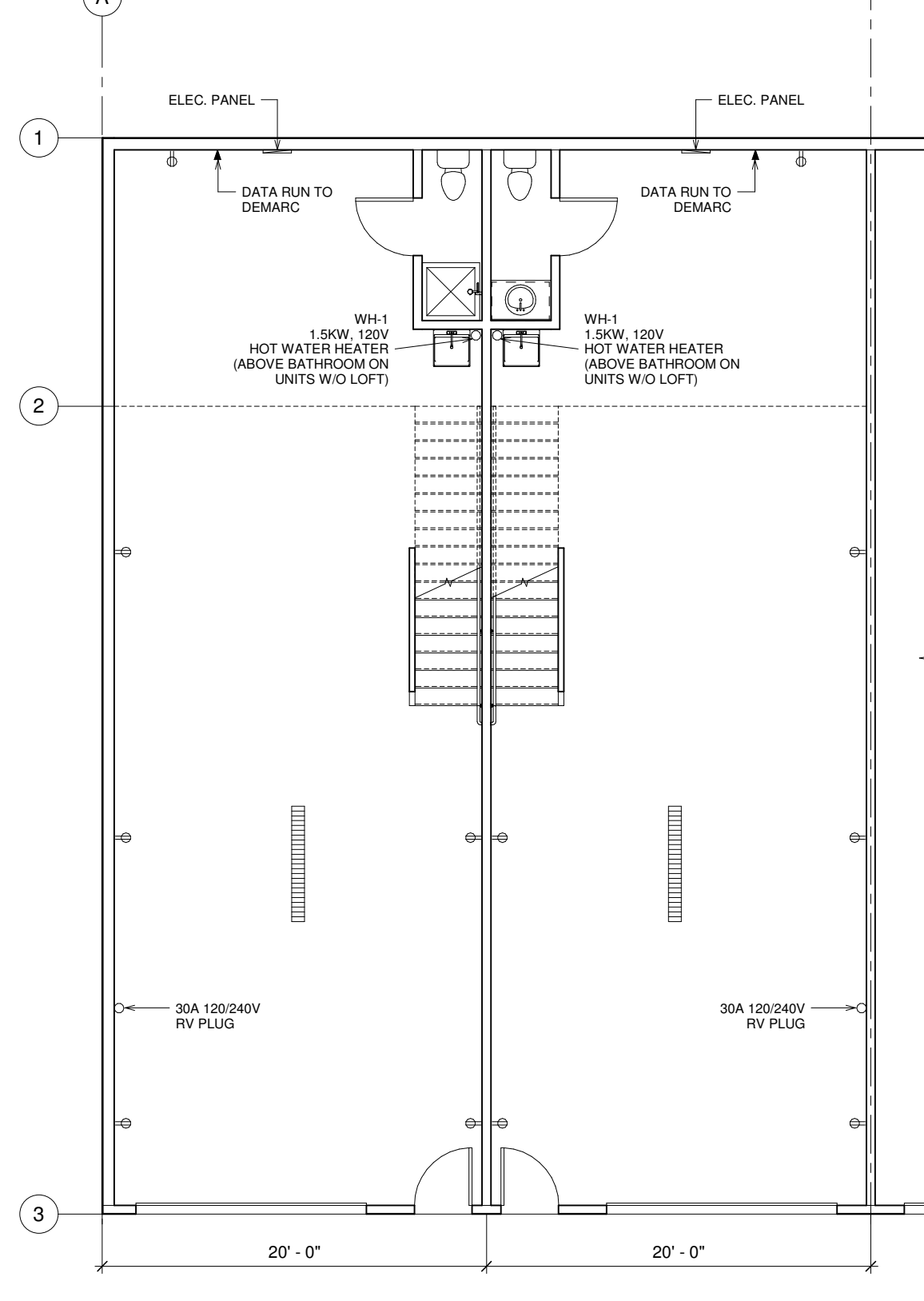
EXHIBIT - B



2 POWER & DATA - REFERENCE PLAN

1/4" = 1'-0"

"IIX17 DRAWINGS ARE HALF THE INDICATED SCALE"



1 POWER & DATA - REFERENCE PLAN 2

1/4" = 1'-0"

REV NO: XX DATE

SAJJ ARCHITECTURE, LLC
 SCOTT A. JONES 6375 KULIS DRIVE, ANCHORAGE, ALASKA 99502

**EAGLE RIVER
 GARAGE CONDO**
 EAGLE RIVER, ALASKA

DR: KBK
 CK: SAJ
 DT: 29 NOVEMBER 2018
 JB: PRISM
 DWG: POWER&DATA