

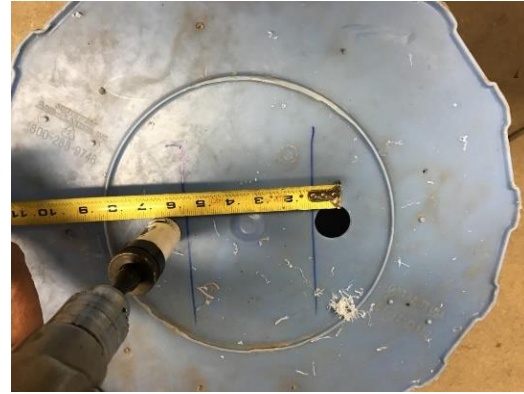
Lick Tube Bin Anchors



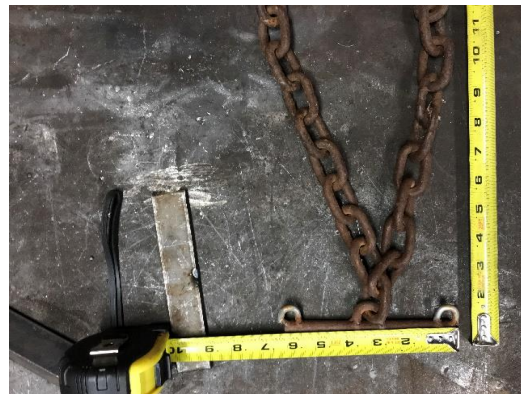
1. You will Need 4 Lick Tubs



2. Turn the tub upside down, Use a 4"X4" block to mark your hole spacing.



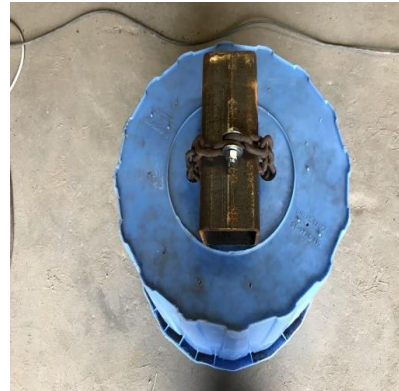
3. Using a 1 1/8" hole saw drill a hole on each side of your spacer mark.
This will place your Holes approximately 6 inches apart center to center.



4. You will need a chain anchor for each tub. (We have these anchors for sale, cost \$13.00 per tub.) Anchors are a 6 inch piece of Rod with 3 welded eyes, one on each end of the rod and one on the center of the rod, and 22 inches of 5/16" chain.



5. Turn your tub right side up again. Set it on Blocks or pallet. Place a chain through each hole with your bar inside the tub. You will then need to drill 2 small holes in the rim of the tub to be able to suspend your anchor with wire to each side of your tub. The bar should be suspended about 4 inches above the bottom of the tub.



6. Check your anchor placement turn your tub back upside-down, place a 4 X 4 between the hole and Bring your chains up around the 4X4 and secure the two ends of the chain with a nut and bolt.



7. Once you have checked your chain placement. Remove your bolt and wire you two chains together where the chains come through the tub



8. Place on blocks or pallet. Fill to within about 2 inches the top of the tub with wet concrete. This will take approximately .13 yards of concrete. Let the concrete cure!



9. Once the concrete has cured in the tubs, remove the concrete from the tubs.



10. Dig holes and bury one concrete block, chain side up, where each leg of your bin will rest on them and your chains will join at the top of the runner.

Part list:

4 lick tubs, 4 chain anchors

4" X 4" block (for spacing) concrete miscellaneous wire