



Team Spotlight

We are excited to announce that SignalHealth is joining MultiCare Health System's established portfolio of clinically integrated networks including [MultiCare Connected Care](#) (MCC) and [PSW](#). MultiCare has a long history of supporting population health and is serious about their commitment to value based contracts, quality outcomes, and supporting the communities they serve.

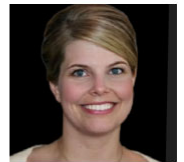
SignalHealth's Board of Directors has named Melanie Matthews as SignalHealth's new President and CEO. Melanie brings more than twenty years of experience in health care and population health to this role. She has a passion for public policy that helps drive reform in the population health and value based care space. Melanie is also President of MultiCare Connected Care, and CEO of PSW which she has led since 2016.

Anna Taylor, MCC's AVP of Population Health and Value Based Care, has been appointed as the SignalHealth Board Secretary. Anna has been with the MultiCare Health system for over fifteen years. She leads the portfolio team in executing value based products and strategic initiatives and oversees the Digital Health Ecosystem that enables the work of population health and value based care.

Melanie and Anna look forward to working with our network providers and community partners as we continue to grow and improve population health initiatives in the Yakima community.



Melanie Matthews



Anna Taylor



Dr. Tanny Davenport



Rachel Ruppel



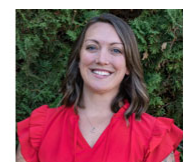
MaryAnne Heath



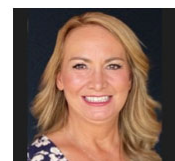
Jasmine Guzman



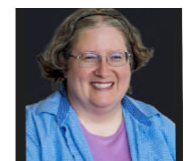
Ryan McNatt



Whitney Kyger



Joy Bender



Judy Gerstenberger



SignalHealth Today

SignalHealth’s clinically integrated network brings providers together to improve the health and wellness of Yakima County residents. By participating in value based contracts and investing in innovative systems, we help our network providers to focus on care that encompasses the whole patient experience, with an emphasis on the promotion of health and wellness.

SignalHealth’s network is comprised of 928 Yakima County providers and 126 clinics. SignalHealth currently has 3 value based contracts with around 17,000 lives.

Our contracts include Health Alliance Medicare Advantage, Molina Medicaid, and the Puget Sound High Value Network’s UMP Plus+ plans that cover Washington State public and school districts employees and their dependents.

[Click here to see a list of our Provider Partners](#)

Since 2012 we have helped providers in the Yakima Valley improve patient care through innovative systems and population health driven initiatives that focus on patient-centered care to achieve better healthcare for our patients and the Yakima community.



MEDICARE SHARED SAVINGS PROGRAM FOR 2024



Memorial Physicians has teamed up with [MultiCare Connected Care](#) and [PSW](#) to establish an Accountable Care Organization (ACO) for Yakima County healthcare providers. This ACO is expected to join the [Medicare Shared Savings Program \(MSSP\)](#).

The opportunity for other local clinics to join Memorial Physicians in this ACO will be available in future years. As we grow participation, Memorial Physicians and its partners will be able to provide even more support to Medicare beneficiaries in Yakima County as they join the movement to support value based care.

MSSP helps practices provide coordinated care to their Traditional Medicare beneficiaries, focusing on delivering the right care at the right time, while avoiding preventable or unnecessary services. The program also seeks to find a way to generate savings for the Medicare Trust Fund while maintaining high quality care.

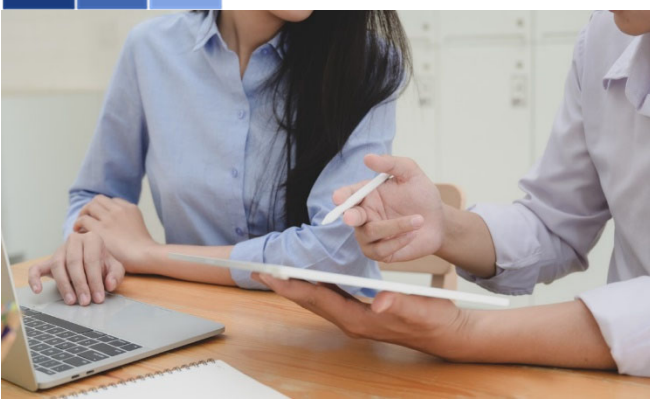
The program offers benefits to participating practices, such as an exemption from MIPS Reporting, and provides additional programs for beneficiaries to enhance their healthcare experience. MSSP participation has grown across the country with ACO participating practices providing care to 10.9 million beneficiaries.

This effort has already helped generate savings to the Medicare Trust Fund as recent projections now show that “assets in the Part A trust fund will be depleted in 2028, six years from now. This is a modest improvement from the projection in the 2021 Medicare Trustees report, when the depletion date was projected to be 2026.” ([FAQs on Medicare Financing and Trust Fund Solvency](#))

This new Yakima-based ACO is set to begin participation in MSSP on January 1st, 2024. MultiCare Connected Care, PSW, and Signal Health will come together to provide support and resources to participants in the program. More information will continue to be shared with the network about MSSP, the ACO’s performance, and participation opportunities, as the year goes on.



MultiCare Employee Health Plan



Be on the lookout for communication from SignalHealth with updated information about network participation in the MultiCare Yakima Memorial employee health plan product “My Connected Care.”

If you are interested in learning more about this, please contact either:

Rachel.Ruppel@signalhealth.com or Ramon.Guel@multicare.org



2023 QUALITY MEASURES FOR SIGNALHEALTH PLANS

Improving quality and clinical outcomes is an important part of being a successful clinically integrated network and improving patient care.

SignalHealth works with our provider partners throughout the year to ensure that we are closing the gaps in care for patients in our value based contracts.

2023 Quality Measure	PSHVN	Molina Medicaid	HA Medicare Advantage
Breast Cancer Screening	x	x	x
A1c Control for Patients with Diabetes	x	x	x
Antidepressant Medication Management	x	x	
Colon Cancer Screening	x		x
Cervical Cancer Screening	x		
Childhood Immunizations: Combo 10	x		
Kidney Health Evaluation for Patients with Diabetes	x		
Asthma Medication Ratio: Ages 5-64 >50%		x	
Child and Adolescent Well Care Visit: 3-11 Years		x	
Prenatal and Postpartum Care: Postpartum Care		x	
Prenatal and Postpartum Care: Timeliness of Prenatal Care		x	
Annual Wellness Screening Completion			x
Comprehensive Diabetes Care: Eye Exam			x
Controlling High Blood Pressure (<140/90)			x
Osteoporosis Management in Women who had a Fracture			x
Statin Therapy for Patients with Cardiovascular Disease			x

Thank you for your partnership!

For more information about SignalHealth, visit signalhealthwa.com or contact us at info@signalhealthwa.com

