

## LED Linear Suspended Light - LD Series



**Application:** Offices, Retail, Schools, Institutions, Galleries, Government Agencies, Grocery Stores, and other Hospitality and Commercial Applications.

### Accessories

Image	Description
	Suspension Kit and Canopy (Included)
OR	Connection Plate (Included)
	Wall Mount Clip (Sold Separately)
	Surface Mount Clip (Sold Separately)

### Feature

- Working temperature: - 4°F ~+104°F / -20°C ~+40°C
- Suitable for damp location
- Lumen Maintenance over 70% @ 50,000+ Hours
- CRI: 80+; PF>0.95
- Beam Angle: 100°
- 0-10V Dimmable: 6.5ft 5wire power feed cable included
- 6.5' adjustable hanging cables included
- Body: White Finish. Aluminum Heatsink for Efficient Heat Dissipation
- Linkable: with wire harness connection kit included for connecting power between fixtures
- CCT adjustable: by dip switch for different color needs

### Specification

Model	Length	Watt	CCT	Lumens	Finish	Dimmable	Voltage	DLC #
HY-2FT-LD-25W-30K/40K/50K	2ft	25W	3000K/4000K/5000K	3250 lm	White	0-10V	120-277V	S-JJSCX2
HY-4FT-LD-50W-30K/40K/50K	4ft	50W	3000K/4000K/5000K	6500 lm	White	0-10V	120-277V	S-V0W5Z3

### Joint Guide

Name	LUD Accessories: L Shape Joint	LUD Accessories: T Shape Joint	LUD Accessories: X Shape Joint
Model No.	HY-LUD-ACC-L-12W-CCT	HY-LUD-ACC-T-12W-CCT	HY-LUD-ACC-C-15W-CCT
Watt	12W	12W	15W
CCT	3000K/4000K/5000K	3000K/4000K/5000K	3000K/4000K/5000K
Finish	White	White	White

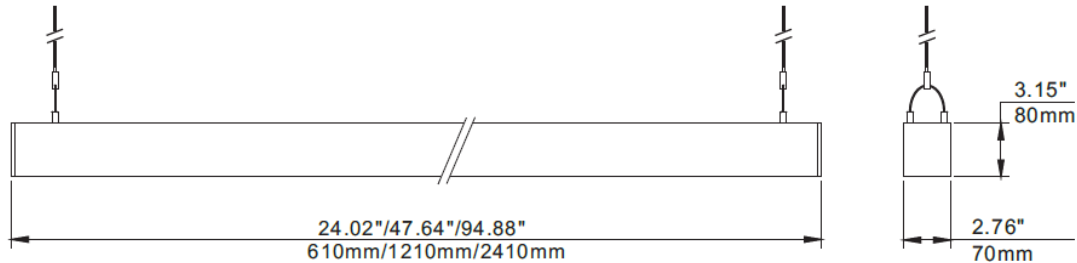
## LED Linear Suspended Light - LD Series

### Dimensions

Linear

2ft/4ft/8ft Front View

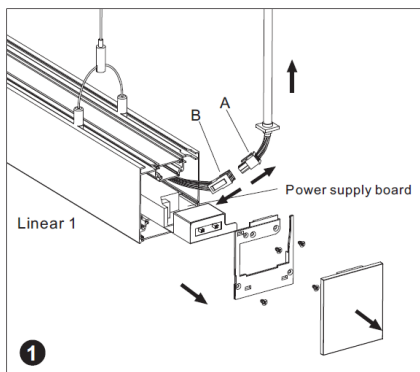
Side View



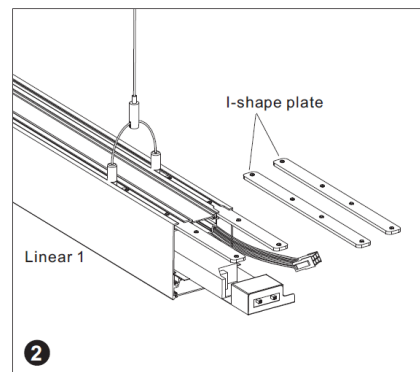
### Package Information

Model. No.	HY-2FT-LD-25W-30K/40K/50K	HY-4FT-LD-50W-30K/40K/50K
Size	2FT	4FT
QTY/PACK	4PCS/PACK	
Package Size	655X258X258mm 25.79\"X10.16\"X10.16"	1255X258X258mm 49.41\"X10.16\"X10.16"
Package Weight	8.51 kg/18.74 lbs	17.95 kg/39.57 lbs
Package CBM	0.043599	0.083538
40GP Capacity	-	~2770PCS
40HQ Capacity	-	~3250PCS
45HQ Capacity	-	~3730PCS

### Connection Installation

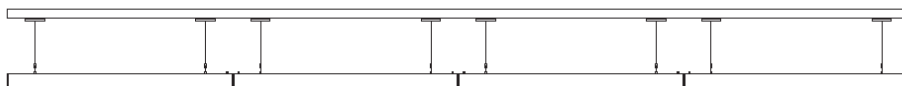


Install the Linear 1 to the ceiling as instruction of Suspension Installation.  
Open the end cap as the picture shows.  
Pull out 1/2 Power supply board of Linear1, and move out the AC wires.  
Disconnect the A and B parts.



Insert the I-shape plate to the track as the picture shows.

Install the Linear Light as above method, keep one main input cord on one side.

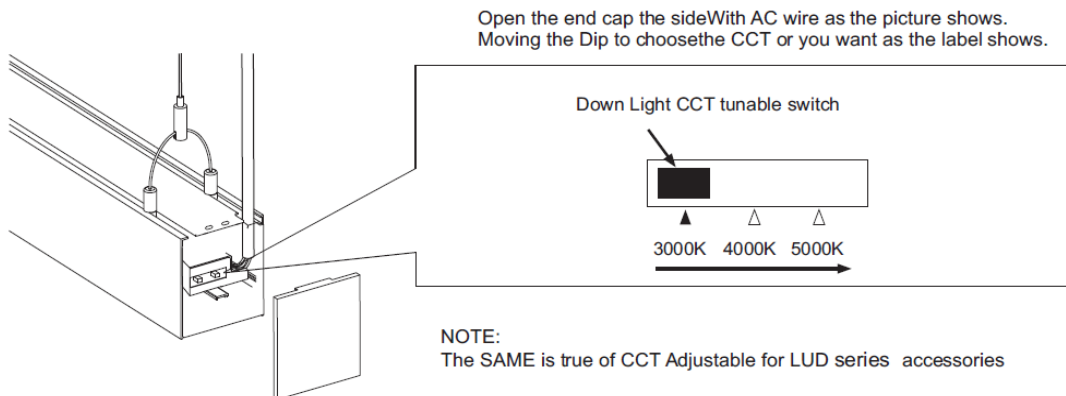


**NOTE: LED LINEAR CAN BE JOINTED TOGETHER AS NEEDED, BUT THE TOTAL NUMBER OF FIXTURES SHOULD BE NOT MORE THAN 7PCS (INCLUDING 7PCS) If you order to use 18# cord, More Links can be Customized.**

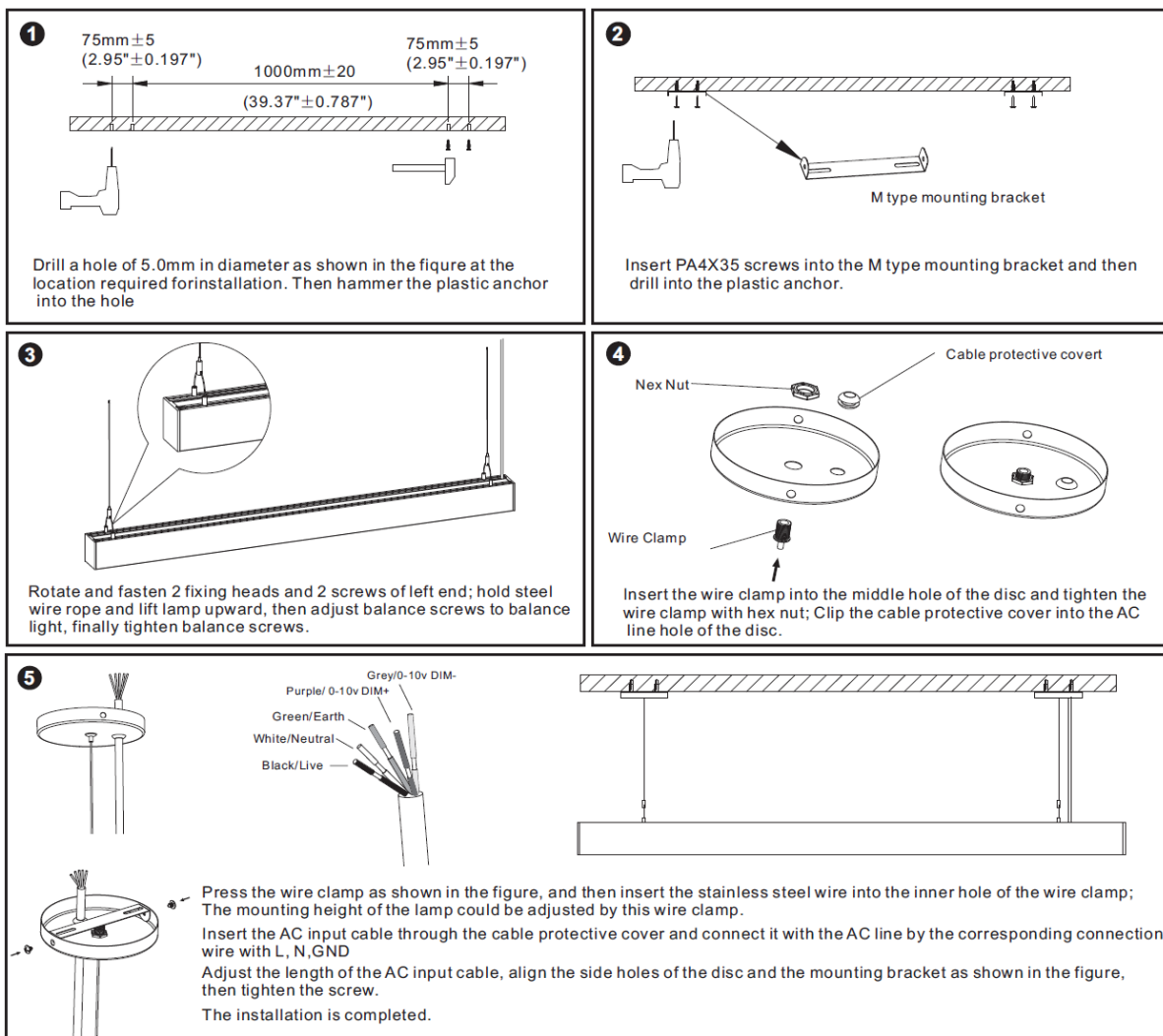
## LED Linear Suspended Light - LD Series

### Installation

#### CCT Adjustable



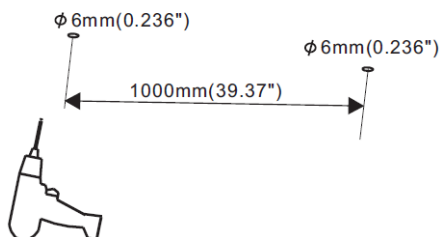
#### Suspension Installation



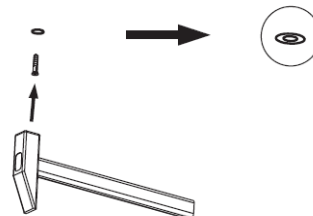
## LED Linear Suspended Light - LD Series

### Installation

#### Surface Mount Installation



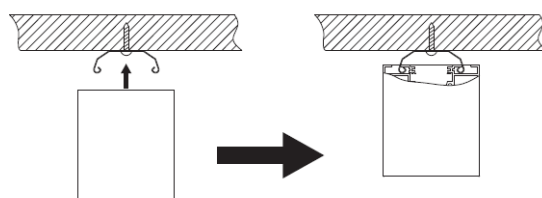
1. Drill the hole on the ceiling (The size is shown in the picture)



2. Drill the anchoring into the opened hole with a nail hammer

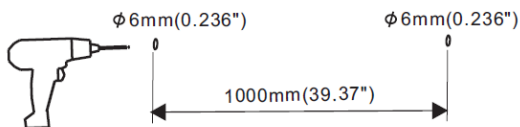


3. Secure the mounting clips on the ceiling

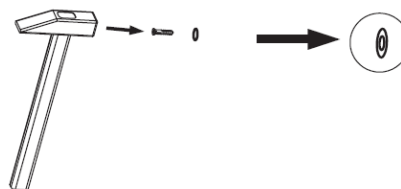


4. Align the back of the lamp with the clips on the ceiling and install the fixture to the mounting clips

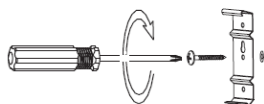
#### Wall Mount Installation



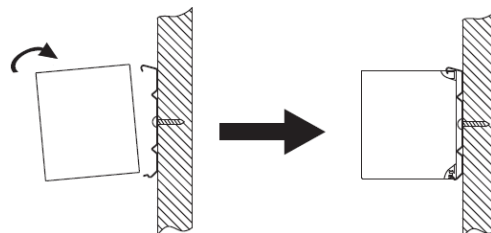
1. Drill the hole on the wall (The size is shown in the picture)



2. Drill the anchoring into the opened hole with a nail hammer



3. Secure the mounting clips on the wall



4. Align the side of the lamp with the clips on the wall and install the fixture to the mounting clips