

 **TAMIYA** PLA MODEL

61121 1/48 McDonnell Douglas™ F-4B Phantom II™



Here is a triumphant entrance into the extensive 1/48 Aircraft Series for the Phantom II with this model, which depicts the F-4B variant. The Phantom II first entered service in 1961, and offers excellent adaptability to a range of purposes. F-4Bs were the first Phantom II aircraft to see active service; powered by twin jet engines, they could carry significant ordnance and were used by the Air Force, Navy and Marine Corps through the Vietnam War, and into the 1970s and 1980s before they were phased out in favour of later designs and left U.S. service in 1996.



*Images show prototype with panel lines accented.

*Transparent canopy parts are partly painted.

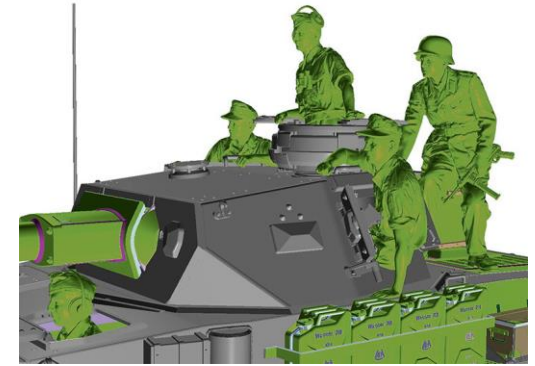
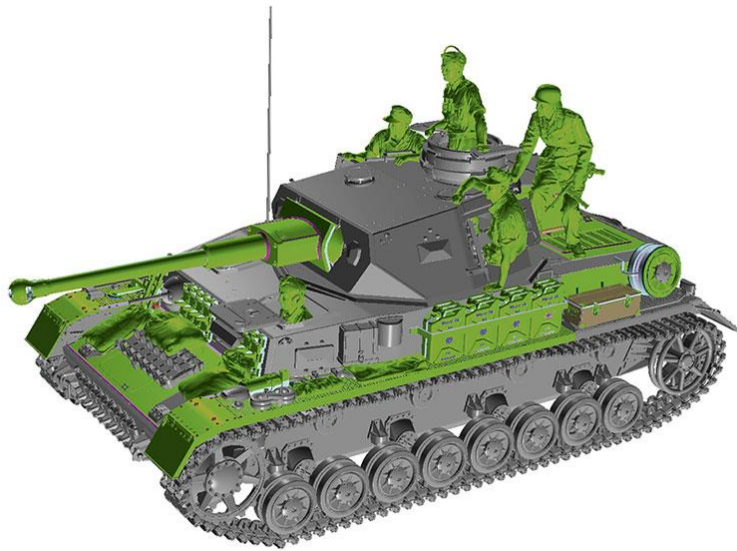
- This is a 1/48 scale plastic model assembly kit. Fuselage length: 370mm, height: 104mm, wingspan: 243.9mm.
- Accurate depiction of the complex form is based on research of the actual aircraft, with parts breakdown and unit assembly designed for a highly robust and realistic finish with minimal hassle.
- Outer wings can be assembled folded or extended, and right and left tail plane move in concert.
- Choose between open and closed canopy, and expanded or stored re fueling probe and boarding ladder.
- Air intake and dust box are combined together for easy setup.
- Parts are included to depict missiles (the same as Item 61114) and drop tank on fuselage underside.
- Comes with decals for multiple marking options including VF-51 during the Vietnam War.
- Includes a full colour painting guide and four-language background story.





TAMIYA

35378 1/35 German Tank Panzerkampfwagen IV Ausf. G



The latest release in our legendary 1/35 Military Miniature Series depicts the Ausf.G variant of the long-serving Pz.Kpfw.IV. Ausf.G tanks were equipped with long-barreled KwK 40 L/43 guns after fighting with Soviet armour demonstrated the obsolescence of the Wehrmacht's short-barreled weapons. Produced between March 1942 and June 1943, they also featured a new mantlet and cradle, and further upgrades during production included extra armour. They would fight on all fronts in the ultimately unsuccessful German war effort.

- This is a 1/35 scale plastic model assembly kit.
- Reproduces long gun barrel successor to the Ausf.F tank depicted in Item 35374 earlier this year.
- In-depth research at the German Tank Museum in Munster contributed to this highly accurate kit.
- Features many accessories such as jerry cans and sand bags depicting designs employed by units in the North African theatre of WWII.
- Comes with three figures with rolled up sleeves and one figure with standard clothes.
- Choose between two types of decals: North African and Eastern Front.
- Includes a full colour painting guide and four-language background story.



35377 1/35 German Sd.Kfz.2 Kettenkraftrad (Mid-Production)



Tamiya announces the appearance of an all-new version of the Kettenkraftrad, which was previously released in the 1/35 Military Miniature Series as Item 35029 back in 1973. This product depicts a mid-production version, as opposed to the the early-production Item 35029 one. The model gives you more realistic scenery with three infantry figures and a cart also included. The Kettenkraftrad was originally developed for commando units but was found to be highly useful on the poor terrain in Russian territory. Of its numerous versions, the mid production was the most prolifically manufactured, and was used to transport materials and even guns in the latter half of WWII.

- This is a 1/35 scale plastic model assembly kit. Length: 140mm, width: 30mm.
- Features realistic depiction of suspension and the complex wheel positions based on research of the real vehicle.
- Assembly type tracks have one-piece straight sections, and the separate pad parts, engine and transmission give a more realistic image.
- Engine hatch can be assembled open or closed, and it uses photo-etched parts for grille. Jigs are also included to bend the photo-etched parts.
- This kit includes a trailer with depiction of canvas cover, driver and infantry figures (three total) which have multipurpose poses, and were created by the latest 3D scanning techniques.
- Decals for instrument panel meters are included.
- Two types of colour scheme - dark yellow and three-coloured camouflage – are introduced in the manual



24360 1/24 Nissan Fairlady 240ZG



Tamiya is delighted to announce this all-new addition to the long-running 1/24 Sports Car Series. Its subject is the Fairlady 240ZG, the top-grade variant of the 240Z – an export version of the Fairlady that had a 2.4-liter engine. Released in 1970 around the world, the 240ZG was accented with the longer “G nose,” FRP over fenders and headlamp covers. The drag coefficient was an astounding 0.390, helping the car achieve an eye watering top speed of 210km/h

- This is a 1/24 scale plastic model assembly kit. Length: 180mm, width: 71mm, height: 53mm.
- Realistically depicted body based on intensive research of the real car. All parts designs were made anew for this model.
- Features a realistic depiction of the engine and movable engine hood with hinge.
- Includes separate metal-plated parts for window frame sections, headlight cover frames and plated trim of wheel covers for a super realistic finish, and a hassle-free paint job.
- Depicts the spartan interior with realism.
- Chassis underside and suspension are accurately depicted with an ergonomic parts breakdown.



24359 1/24 1989 Sauber-Mercedes C9



Tamiya is delighted to welcome back a classic model to the 1/24 Sports Car Series! This kit takes the original Item 24091 and soups it up with some additional parts for a detailed and rewarding build. It depicts the Sauber-Mercedes C9 that was originally developed for the 1987 World Sportscar Championship, and in 1989 the Sauber-Mercedes team won seven of eight races in the championship including a glorious triumph in the biggest 24-hour race.





- This is a 1/24 scale plastic model assembly kit. Length: 197mm.
- The sleek, refined form of the car is recreated in style, including a detailed rendering of the 5-liter V8 twin engine under the detachable rear cowl.
- Features realistic recreations of the suspension, cockpit, and even the undercowl.
- New additions to this kit are as follows: photo-etched parts for intercooler, oil cooler, engine bay heat shield, wingtips and belt buckles (originally used in Item 24310), and seatbelt stickers.
- Decals (made by Cartograf) and masking stickers have also been updated.
- Comes with decals to depict any of the 61, 62 and 63 cars which competed in the 1989 race

