



# Welcome to Rotherfield Village Pre-School

## Pre-School In Pictures





**This is the gate where you will come into preschool.**

**Your grown-up will bring you here in the morning, and we'll be ready to say hello and start a fun day together!**



**You can leave your coat and bag on your peg.**

**At the start, your peg will have your name and a picture of your face on it, so you'll always know which one is yours!**



**Your lunchbox will go on the shelf, and your water bottle will go on a special shelf in the room.**



**This is what your pre-school  
looks like inside.**

**There are lots of toys and fun things  
to play with, like puzzles, games, and  
dinosaurs. It's a place where you can  
laugh, learn, and make new friends.**







**What do you like to play with?**

**We have a big construction area where you can build tall towers, and move bricks around with the trucks!**

**We have so many fun toys that can help you learn amazing new things! If you tell us what you love to do, like drawing, building, or pretending, we can pick out the perfect toys and play together**



**We have a lovely home corner where you can feed the babies and pretend to be anything you like!**

**You can be a police officer keeping everyone safe, a pirate sailing the seas, or even a mermaid swimming underwater**





**This is your forest school area.**

**We have a mud kitchen where you can mix magical recipes, have lots of space to run, jump, and explore, and guess what? We have some very exciting new toys coming soon!**





**What's outside?**

**We've moved our outside kitchen here so we can have more space to get creative.**



**Our balcony is full of exciting things to explore! We've got messy tuff trays, giant blocks, sand and lots of water play equipment.**

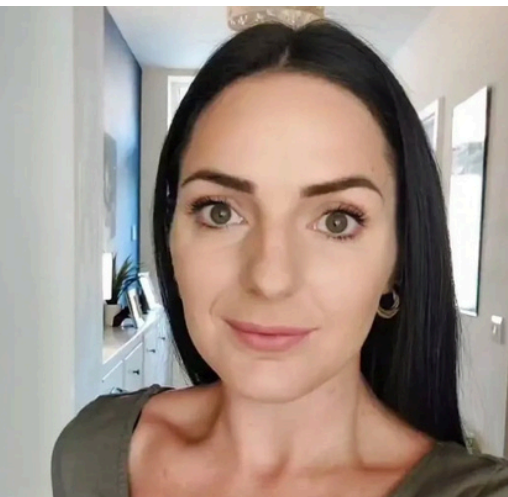


**Our diddicars will be outside the front door ready for us to explore Rotherfield Park.**



**Here are some pictures of the lovely people who will be looking after you while you're at pre-school!**

**They love to bake yummy cakes, paint colourful pictures, play fun games, and do lots of exciting things with you. They can't wait to see you and have lots of fun together!**



**Katie P**

**Deputy Manager (Acting Manager)**



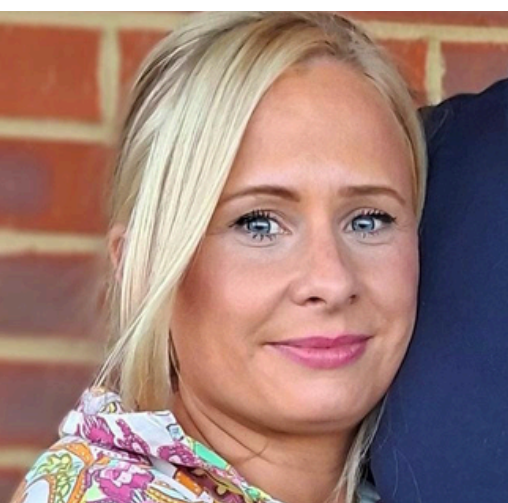
**Katie S**

**Early Years Practitioner & SENCO Support**



**Laura**

**Early Years Practitioner & SENCO**



**Mel**

**Early Years Practitioner**



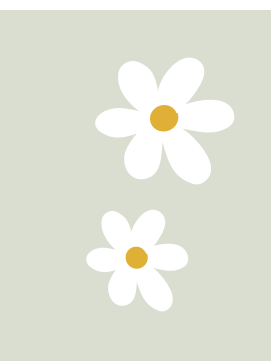
**Shelley**

**Early Years Practitioner**



**Natalie**

**Early Years Practitioner**



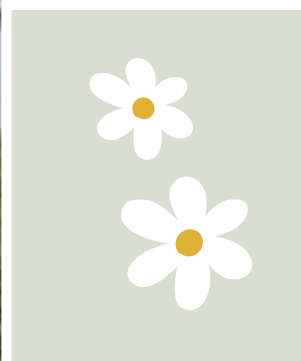
**Susan**

**Early Years Practitioner**



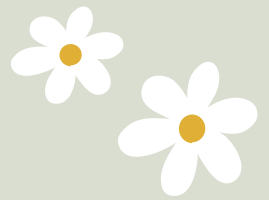
**Louise**

**Early Years Practitioner**





# Daily Essentials



We appreciate there may be a lot to remember ahead of your child's first day at our pre-school, so we have drawn up a handy checklist to help! We have limited space so bags will need to go home with your child at the end of each session.

Your child will have a named peg for their coat and bag, wellies can be stored underneath. Suitable clothing for all weathers would be handy to have. It's important to ensure that everything is **clearly labelled** with your child's name, especially shoes, coats, bottles, lunchboxes/food containers, and any items of value. Any medication or prescriptions must be in the original containers and labelled (please see our medicine policy)

- ☐ Spare clothes (please note clothes may get messy so please only pack items of clothing you don't mind getting untidy!)
- ☐ Suitable clothing for all weathers (for example a jumper on cold days and a rain coat is always handy)
- ☐ Wellies or you can borrow some of ours
- ☐ Sun hat or winter hat when required
- ☐ Healthy packed lunch
- ☐ Water bottle (please only provide water and not juice!)

**Need labels? Nametags4u will donate 25% of the order to our preschool if you order using the [link here](#)**





# Daily Essentials

**(if you have opted out of the consumable fee)**

If you have opted out of the consumable fee, then you will need to provide your child with a healthy snack (we have children who have allergies, so we have a list of snacks you are ok to provide). You will also need to provide nappies, creams, wipes, and nappy bags if your child requires them.

- ☐ Spare clothes (please note clothes may get messy so please only pack items of clothing you don't mind getting untidy!)
- ☐ Suitable clothing for all weathers (for example a jumper on cold days and a rain coat)
- ☐ Wellies in winter
- ☐ Sun hat or winter hat when required
- ☐ Healthy packed lunch
- ☐ Water bottle (please only provide water and not juice!)
- ☐ Healthy snack for the morning (in a separate bag)
- ☐ Nappies, creams, wipes and nappy bags (in a separate small bag)

**Need labels? Nametags4u will donate 25% of the order to our preschool if you order using the [link here](#)**





# Don't forget to book your child in...

## Early Bird Club

Our Early Bird Club runs from 8:30 to 9:00am, and is the perfect option for early drop-offs. The cost is £3.50 per session. Please note: Breakfast is **not** included.

## After School Club (located at pre-school)

Our After School Club runs from 3:00pm to 5:00pm, and provides a safe, relaxed environment for children to unwind and play after the school day. A light tea is included, and there's plenty of fun with games, activities, and time with friends. The cost is £6.00 per hour

## Holiday Club

We're planning to run Holiday Clubs during some of the school breaks (dates to be confirmed). If this is something you'd be interested in, please let us know!

Expressing your interest helps us plan ahead, and ensure we can offer the best possible offering for our families.

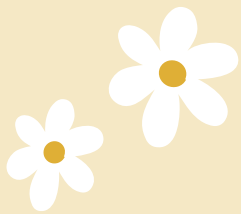
## Email us to book your club place



01892 853207

[office@rotherfieldpre-school.co.uk](mailto:office@rotherfieldpre-school.co.uk)





# Settling in Sessions

We understand that starting your child at pre-school might be an emotional time for everyone. We want to work closely with parents and carers to ensure that there is a strong relationship from the outset.

At your first settling in session you and your child will meet with either your Key Person, who will be your main point of contact at pre-school, or a qualified member of the team. This is the opportunity for you to discuss your child's needs and preferences. This will help us ensure your little one receives the best care and support at Rotherfield Pre-School.

## Our External Classes

We are very lucky to be able to offer an external club for our children. This is run in session time, by a professional person in the Scout Hut (accompanied by our team). We arrange everything for you and add the fees to your monthly invoice. The cost for the class is £5 per session. Those not taking part continue their normal planned activities in pre-school.



**Lana's Musical Adventures - Wednesday Afternoon**



# Ways to keep in the loop

We're excited to let you know that we now use a clever app called Famly to stay connected with our families.



This is our main platform for sharing observations of your child's learning and development, sending invoices, and keeping you updated with important pre-school news, and community information. You will receive a special link that enables you to download the app on your chosen device.



We also have our pre-school **WhatsApp Group**, where you can connect with other families, and stay updated on upcoming social events. We will add a link in our Famly app news feed, so you can join.

## Add our details to your contacts

01892 853207

[office@rotherfieldpre-school.co.uk](mailto:office@rotherfieldpre-school.co.uk)

[www.rotherfieldpre-school.co.uk](http://www.rotherfieldpre-school.co.uk)

Recreation Ground, North Street, Rotherfield  
East Sussex, TN6 3LX

