



Welcome to Rotherfield Village Pre-School

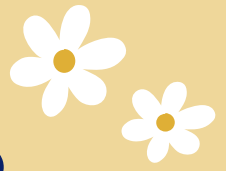
September 2025



Save our
contact
details

01892 853207
office@rotherfieldpre-school.co.uk
www.rotherfieldpre-school.co.uk

Hello and Welcome



As we look ahead to reopening in September, we wanted to take a moment to reflect on the journey we've been on together as a pre-school community.

The past months have brought challenges, but also opportunities for change. Behind the scenes, the team and the Board of Trustees have been working closely to ensure a strong and sustainable future for Rotherfield Pre-school. From reviewing our daily routines and refreshing the learning environment, to strengthening policies and welcoming new faces to the team, every step we've taken has been with the children's wellbeing and development at heart.

We know this time hasn't been easy for families, and we want to sincerely thank you for your patience, understanding, and continued support. Your belief in the pre-school has meant the world to us, and it's helped carry us through this period of transition.

Now, we're turning a new page, and we're genuinely excited for what's ahead. The room is being lovingly reorganised this summer, with the whole team involved in shaping a space that's warm, welcoming, and inspiring for all our children.

Together, we're building a bright future for Rotherfield Pre-school, and we can't wait to open the doors in September and begin this next chapter with you and your children.



Clair, Erin and Matt
The Board of Trustees

One Room & One Team

After careful thought, we've decided to bring all of our children back into one shared room rather than having them split into two separate areas. Being one space helps build a real sense of community and togetherness.

Younger children benefit from seeing and learning alongside older children, picking up routines, language, and confidence just by being around them. In turn, the older children love taking on little helping roles, which builds their independence and sense of responsibility.

Having everyone in one shared space also makes it easier for staff to work as a team and respond to the individual needs of each child more quickly, consistent and run smoothly. The space itself has been thoughtfully arranged to suit a wide range of ages and stages of learning, with areas for quiet time, active play, creativity, and everything in between.



The team are really excited to be in over the summer holidays, getting stuck in and helping shape the new changes to the room. It's a lovely chance for us to work together, bring fresh ideas to life, and make the space the very best it can be for the children come September.

Drop-off/Pick-up

In response to feedback from families, we'll be returning to using the main front door for both drop-off and collection for all ages from September.

Our Resources

You'll still find the same familiar educational toys, books, and learning areas, but we've just thoughtfully updated and rearranged them to allow our children to explore, question, and grow.

Whether it's role play, building, messy play, or quiet time with a story, everything is now even more closely linked to the skills and ideas we're nurturing through our new approach. It's all about making sure the children are engaged, inspired, and learning through the kind of play that feels just right for them.





Our Team



At Rotherfield Preschool, we're proud to have a passionate and dedicated team of practitioners who are committed to creating a safe, nurturing, and inspiring learning environment for every child.

Each member of our team holds a current DBS check, and is fully trained in paediatric first aid, in line with the latest EYFS Government requirements. With a shared love for early years education, our practitioners work closely with the children to support their individual growth, curiosity, and confidence every step of the way.

Matt

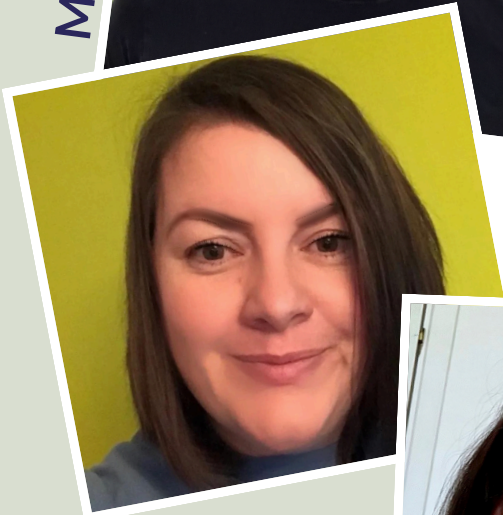


The Board of Trustees

Trustees are not outsiders, we are fellow parents, just like you. We volunteer our time, energy, and care because we want the same things for our own children that you want for yours: a safe, supportive, and inspiring place to grow and learn.

We are always at the end of an email to answer any questions.
board@rotherfieldpre-school.co.uk

Clair



Erin



Our Team



Picture
Coming Soon



Katie S

Qualified Practitioner & SENCO Support



Laura

Qualified Practitioner & SENCO



Mel

Qualified Practitioner



Shelley

Qualified Practitioner



Ruth

Qualified Practitioner



Natalie

Training Practitioner



Susan

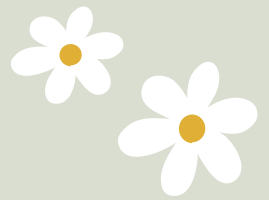
Qualified Practitioner



Louise

Qualified Practitioner

Daily Essentials



We appreciate there may be a lot to remember ahead of your child's first day at our pre-school, so we have drawn up a handy checklist to help! We have limited space so bags will need to go home with your child at the end of each session.

Your child will have a named peg for their coat and bag, wellies can be stored underneath. Suitable clothing for all weathers would be handy to have. It's important to ensure that everything is **clearly labelled** with your child's name, especially shoes, coats, bottles, lunchboxes/food containers, and any items of value. Any medication or prescriptions must be in the original containers and labelled (please see our medicine policy)

- ☐ Spare clothes (please note clothes may get messy so please only pack items of clothing you don't mind getting untidy!)
- ☐ Suitable clothing for all weathers (for example a jumper on cold days and a rain coat is always handy)
- ☐ Wellies or you can borrow some of ours
- ☐ Sun hat (April through to September) or Winter hat when required
- ☐ Healthy packed lunch
- ☐ Water bottle (please only provide water and not juice!)

Need labels? Nametags4u will donate 25% of the order to our preschool if you order using the [link here](#)

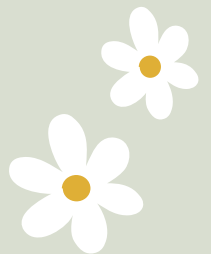


Daily Essentials

(if you have opted out of the consumable fee)

If you have opted out of the consumable fee, then you will need to provide your child with a healthy snack (we have children who have allergies, so we have a list of snacks you are ok to provide). You will also need to provide nappies, creams, wipes, and nappy bags if your child requires them.

- ☐ Spare clothes (please note clothes may get messy so please only pack items of clothing you don't mind getting untidy!)
- ☐ Suitable clothing for all weathers (for example a jumper on cold days and a rain coat)
- ☐ Wellies in winter
- ☐ Sun hat (April through to September) or Winter hat when required
- ☐ Healthy packed lunch
- ☐ Water bottle (please only provide water and not juice!)
- ☐ Healthy snack for the morning
- ☐ Nappies, creams, wipes and nappy bags



Need labels? Nametags4u will donate 25% of the order to our preschool if you order using the [link here](#)



name tags 4u

Our Clubs

Early Bird Club

Our Early Bird Club runs from 8:30 to 9:00am, and is the perfect option for early drop-offs. The cost is £3.50 per session. Please note: Breakfast is **not** included.

After School Club

Our After School Club runs from 3:00pm to 5:00pm, and provides a safe, relaxed environment for children to unwind and play after the school day. A light tea is included, and there's plenty of fun with games, activities, and time with friends. The cost is £12.00 per session

Holiday Club

We're planning to run Holiday Clubs during some of the school breaks (dates to be confirmed). If this is something you'd be interested in, please let us know!

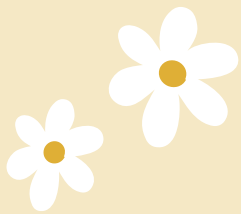
Expressing your interest helps us plan ahead, and ensure we can offer the best possible service for our families.

Email us to book your club place



01892 853207

office@rotherfieldpre-school.co.uk



Settling in Sessions

We understand that starting your child at pre-school might be an emotional time for everyone. We want to work closely with parents and carers to ensure that there is a strong relationship from the outset.

At your first settling in session you and your child will meet with either your Key Person, who will be your main point of contact at pre-school, or a qualified member of the team. This is the opportunity for you to discuss your child's needs and preferences, this will help us ensure they receive the best care at Rotherfield. You will also meet Katie our deputy manager who can also go through any questions you might have.

Our External Classes

We are very lucky to be able to offer an external club for our children. This is run in session time, by a professional person in the Scout Hut (accompanied by our team). We arrange everything for you and add the fees to your monthly invoice. The cost for the class is £5 per session. Those not taking part continue their normal planned activities in pre-school.



Lana's Musical Adventures - Wednesday Afternoon

Ways to keep in the loop

We're excited to let you know that we'll soon be using a clever app called Famly to stay connected with our families.



This will be our main platform for sharing observations of your child's learning and development, sending invoices, and keeping you updated with important pre-school news, and community information. All families will receive a link next week to download and set up the app on your devices. We're looking forward to making communication smoother, and more engaging for everyone through the Famly app.



← We also have our pre-school **WhatsApp Group**, where you can arrange playdates with other families, and stay updated on upcoming social events. Pop us over an email to be added to the group.

Add our details to your contacts

01892 853207

office@rotherfieldpre-school.co.uk

www.rotherfieldpre-school.co.uk

Recreation Ground, North Street, Rotherfield
East Sussex, TN6 3LX



Open Morning

Sunday 31st August 2025

10am - 11am

(not quite the whole morning!)

Join us for some cake and a friendly chat.
Come along to see what we've been up to over
the summer holidays as we get everything ready
for our September opening!

Some of our lovely team will be on hand to
answer any questions you may have, and there'll
be plenty of toys for your little ones to enjoy.

RSVP via office@rotherfieldpre-school.co.uk

