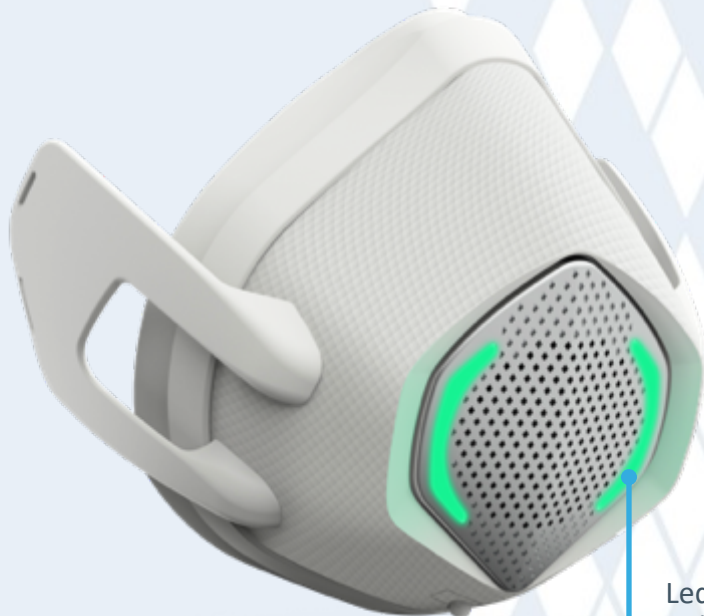




New concept air cleaning mask



Personal Care



Led functionalities indicator

Fan for expelling exhaled CO₂

NPCO + KtV filter



Upcoming features

- Bluetooth module for easier device connection
- Integrated speaker for future sound sharing
- Compact microphone to allow cellphone calls
- Sensors with light indicator VDC, temperature, alcohol, filter status...
- Integrated phone translator for flexible worldwide communication
- Different types of mechanical filters
- Flexible integrated PCB for upcoming SLIM mask version



- Transparent version for less aesthetic impact
- Complete face with glass implementation, and a "total face" version
- Integrated torch for security reasons, help night walkers and runners
- Wireless charge for a "plug and play" aspect
- Dedicated App for a 360° device control
- UV sanitizing case for a total cleaning of mask body
- Integrated GPS module for a upcoming complete user experience

original FUEL designed and patented product



is a special multipurpose sanitation mask for professional use. It employs the NPCO - WO₃ + KtV sanitation technology to instantly destroy viruses, bacteria and other pathogens flowing inward during the inhaling respiratory phase. At the same time the 1 m³/h fan extracts the residual CO₂ exhaled during the breathing. The battery will assure a life of 8 hours rechargeable with micro USB. The mask is designed to become a smart platform integrating the above upcoming features.

