

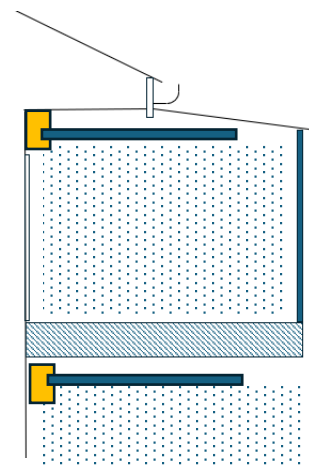
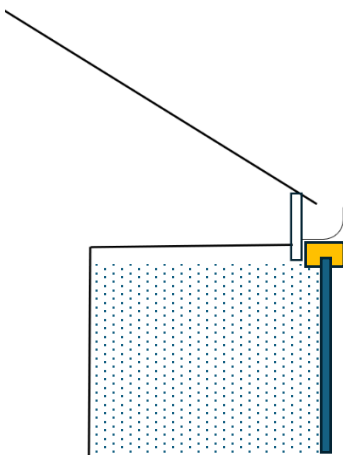
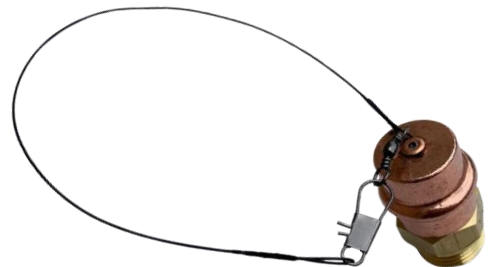
Half Circle Nozzle Information

The Half Circle Nozzle has a ½” BSP Male thread and is designed for higher pressure systems, we recommend a system pressure of 350Kpa for these nozzles. We recommend installing an inline suction filter and a pressure regulating valve in your water supply pipework.

Our solid-state ember defence nozzle can be mounted at any angle and continue to operate as designed. The spray stream is 1.0mm thick at an angle of 90° to the thread, the 6 Metre diameter 180° coverage making it suitable for fascia installation, under deck and pergolas.

This type of nozzle has been developed with AS5414 as a guide and is available with a blow off cap to meet requirements. Our head is 100% Australian made and can be fully disassembled for maintenance.

Half Circle Nozzle Specifications			
Recommended Pressure	Litres Per Minute	Diameter Coverage	Recommended Spacing
350 KPA	8	6M	5M
Tube Sizing			
No. of Heads on Tube Diameter			
Branch	≤5 on 20NB	≤10 on 25NB	≤15 on 32NB
Ring Main	≤10 on 20NB	≤20 on 25NB	≤30 on 32NB



Facia and Covered Area Installation Guidelines

Facia Sprays - A suitably sized ring main is attached to the fascia or inside the eaves. A Tee with a 15mm branch is install at a maximum of 5M apart at 90° to the exterior wall.
 Pergola and Veranda Sprays – A suitable sized tube should be installed on exterior wall, A Tee with a 15mm branch is install at a maximum of 5M apart parallel to the wall to fix the nozzle in place.

Ensure fall towards main line to allow water to drain to winterise the system.