



RIVHAR

ENGINEERING SOLUTIONS  
CONSTRUCTION MANAGEMENT

# Aerial UAS (drone) LiDAR

A new approach for  
improved terrain.

# Unmanned Aircraft LiDAR

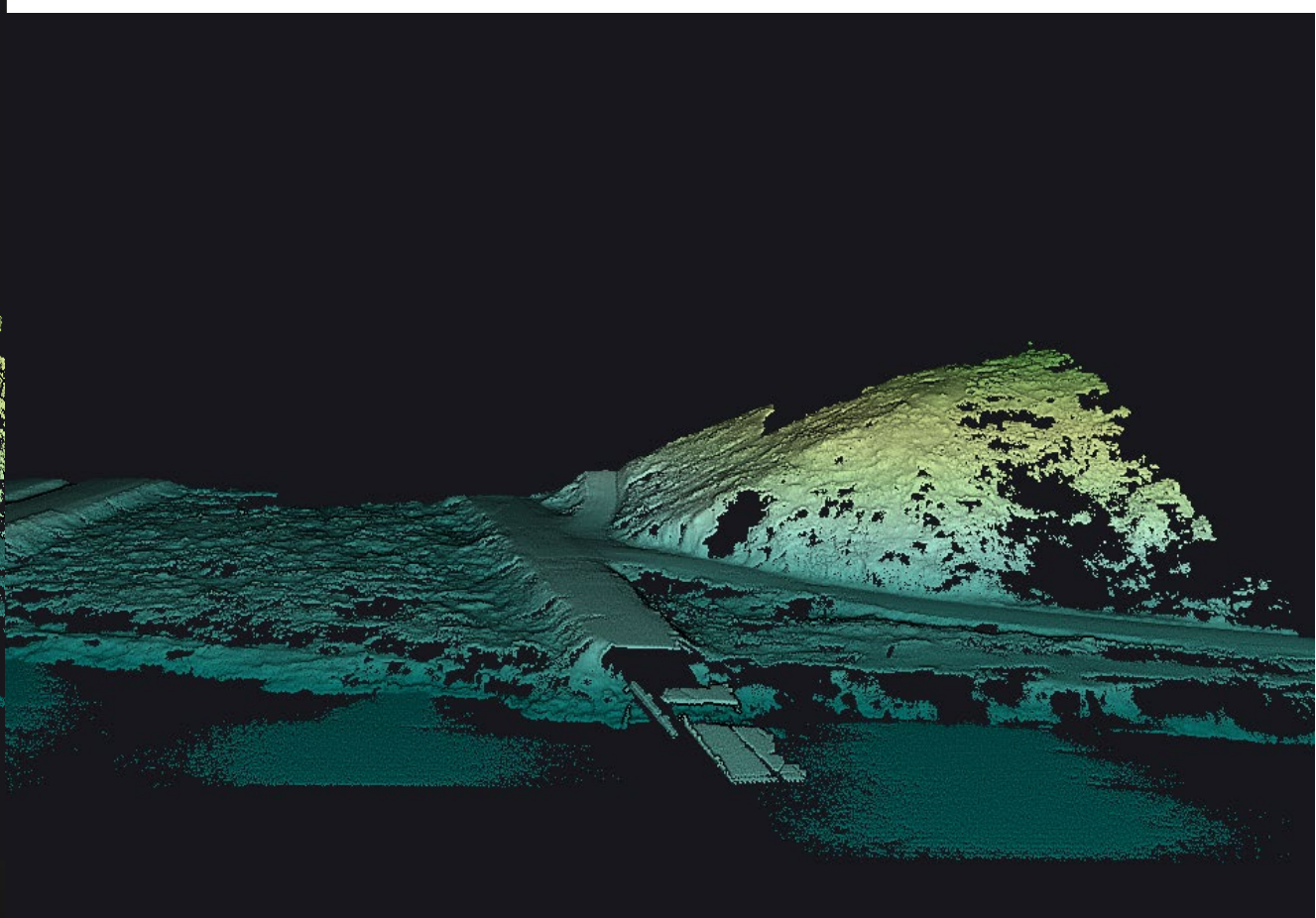
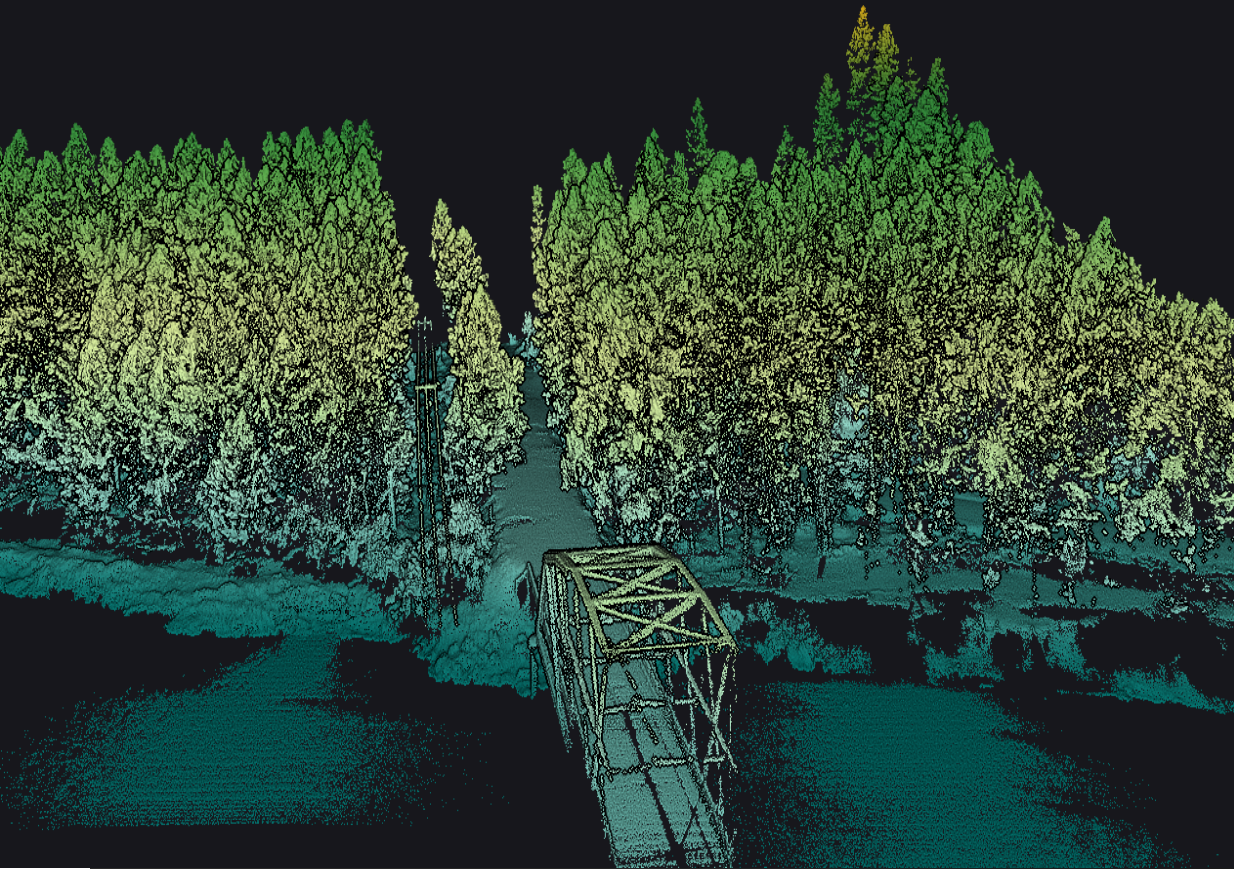
- Precision 2.5 cm
- Accuracy 3.0 cm
- Shots per second: 240,000
- Operating Temperature: -4 to 104°F



## About Us

---

Science-based engineering design company focused on terrain modeling, hydraulic modeling, and habitat design.




# Terrain Solution

UAV captured LiDAR showing high density of trees (before processing) and terrain definition of bare earth (post processing).

A wide landscape at sunset with a river and mountains. The sky is a mix of orange, yellow, and pink, with the sun low on the horizon. The foreground shows a river with some ice or snow, and a wooden fence. The middle ground has some bushes and trees, and the background shows rolling hills and mountains under the sunset sky.

# Contact Us

---

 Jeanne McFall, Owner/President

 +208-401-6129

 [jeanne@rivhab.net](mailto:jeanne@rivhab.net)

 <http://www.rivhab.com/>