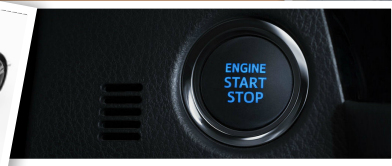


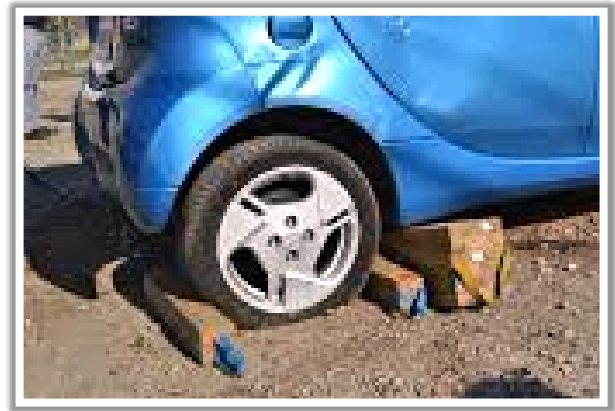
# HYBRID VEHICLE SHUTDOWN

[rescuereDEFINED.com](http://rescuereDEFINED.com)



## Stabilize and Chock Wheels

It is important to chock the wheels on all incidents to prevent unintended movement of the vehicle. With Hybrid and Electric vehicles, it is more important as simply stepping on the accelerator can cause them to move without any noise from the motor. We often overlook this step because of the lack of engine noise.



## Apply the Emergency Brake

If possible and practical apply the vehicles emergency brake. This will also help prevent movement if the occupant lifts their foot off of the brake pedal or inadvertently steps on the accelerator during patient removal or extrication.



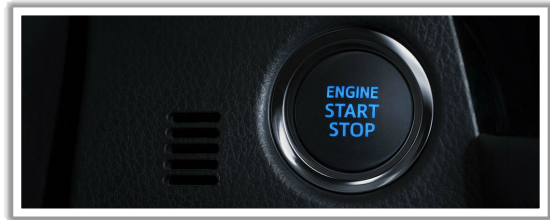


## Roll down windows/move seats

Before shutting off the ignition remember to roll down windows as needed and move electric seats backwards to aid in extrication and patient removal.

## Turn Vehicle Power Off

Remove the key, press the start/stop button.



## First Responder Cut Loop

Cut a section out of the first responder cut loop to prevent accidental reconnection of the circuit.

## High Voltage Battery Shut Down

When possible shut down the high voltage battery by using the factory disconnect.

For additional information and training contact us at [rescuereDEFINED@gmail.com](mailto:rescuereDEFINED@gmail.com)

