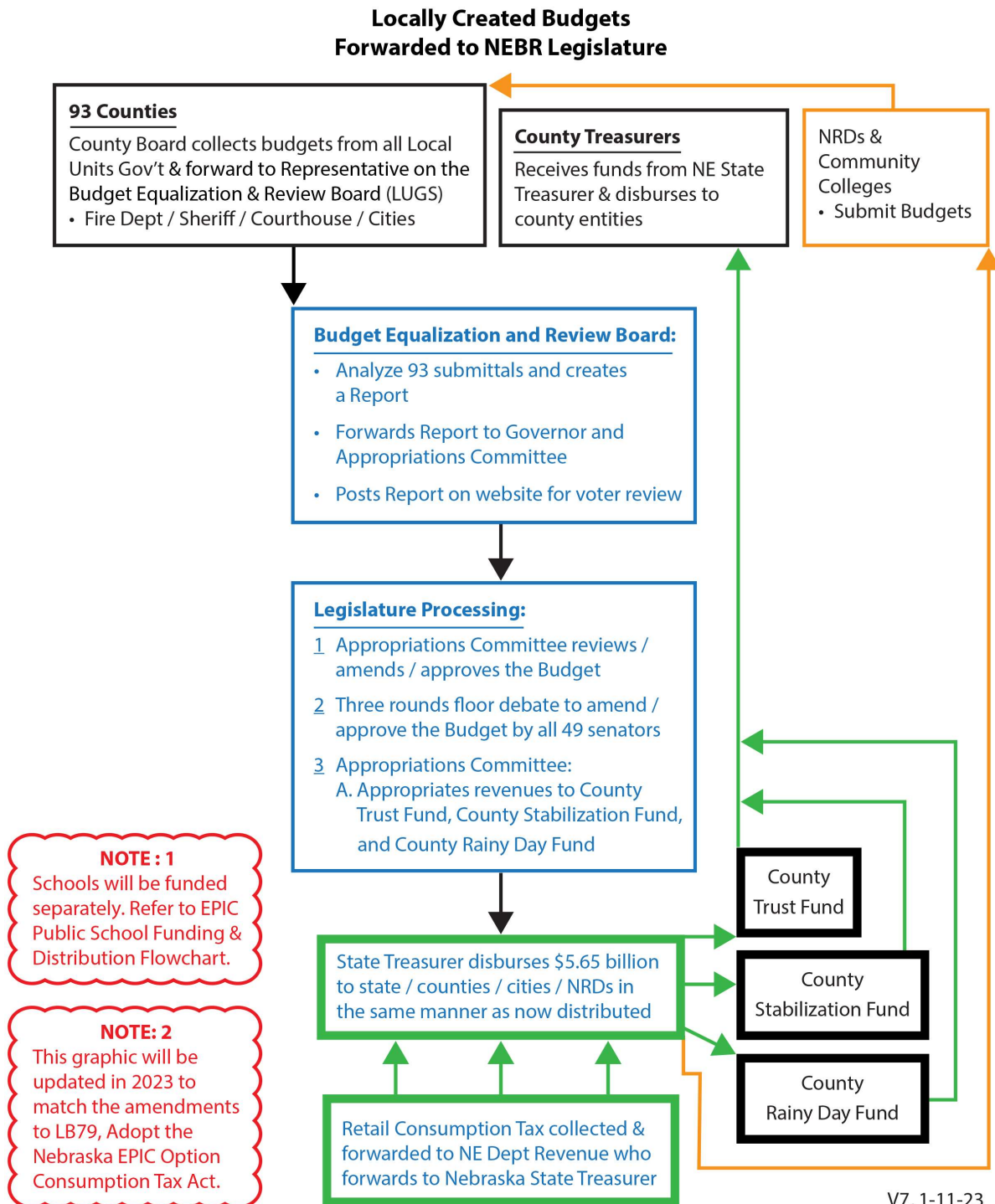


EPIC Option Distributions

The proposed process for collecting and distributing the consumption tax is in Legislative Bill LB79. LB79 can be read in its entirety at www.nebraskalegislature.gov or www.EPICoption.org.

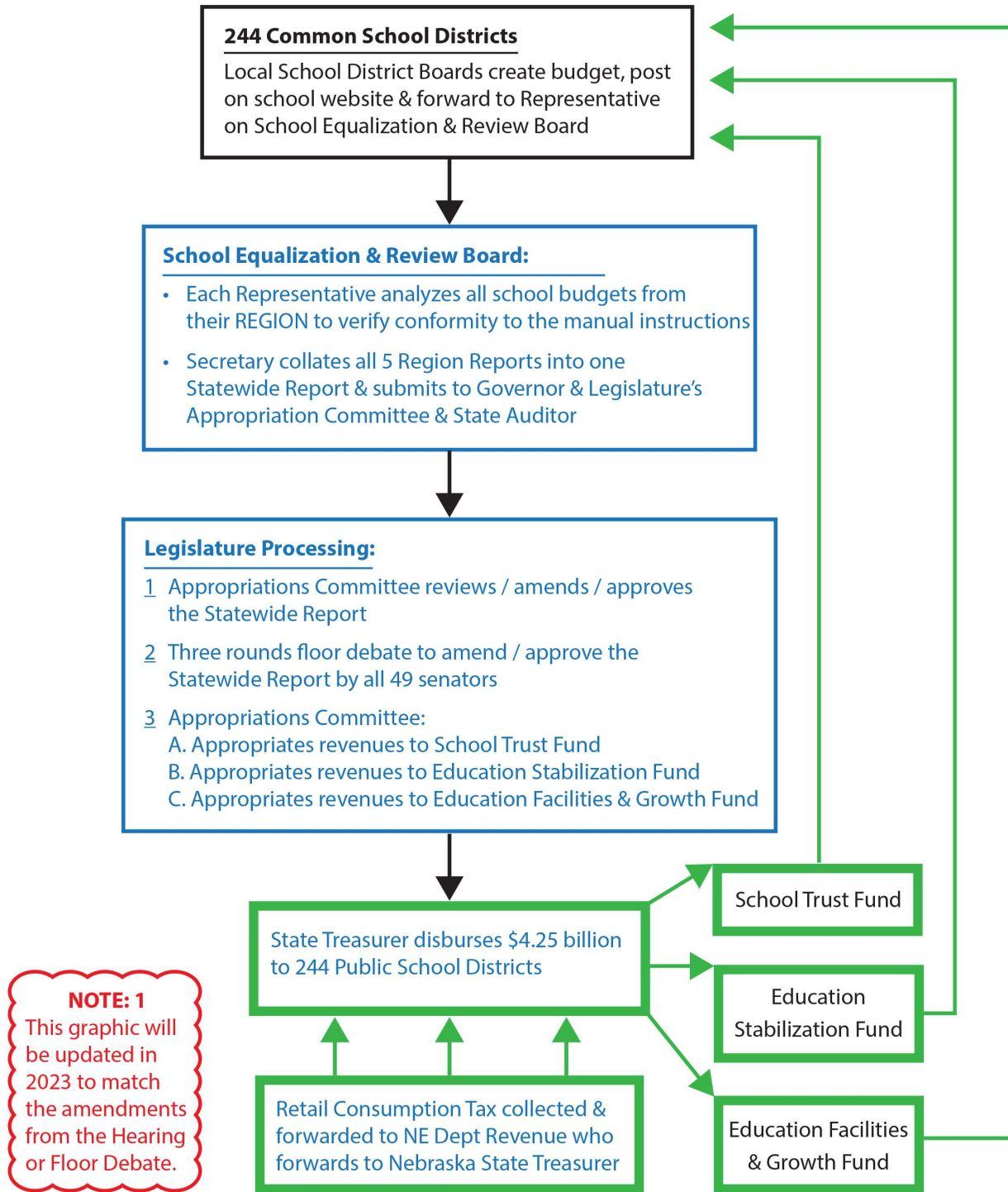
Below are two diagrams to help explain this process.

The EPIC County Funding & Distribution Flowchart



The EPIC Public School Funding & Distribution Flowchart

Locally Created School Budgets Forwarded to NEBR Legislature



V4, 1-11-23