



# BigLedger's B2B Procurement

*Streamline procurement, reduce costs, and enhance compliance.*

# Transforming Procurement through composability

*Procurement teams today face challenges such as data fragmentation, manual approvals, and regulatory complexities, which inflate costs and limit operational agility. BigLedger addresses these with a **composable, modular system** that adapts to unique procurement needs, providing a streamlined, efficient solution.*

## Scalability

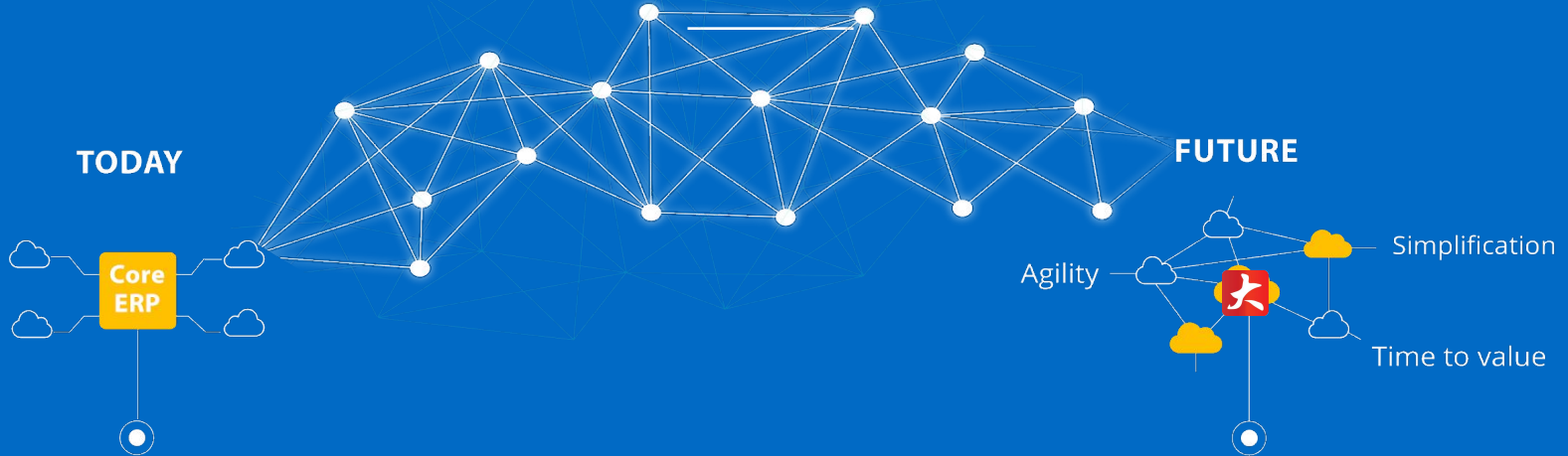
Whether you are a small startup or a large enterprise. Our architecture grows with your business, ensuring seamless procurement management for companies of any size.



## Adaptability

BigLedger's adaptable framework meets evolving regulatory demands, enhancing compliance while maintaining competitive agility.

# Customer challenges are driving us forward



## Hybrid landscape

- Monolithic core
- Selected capabilities in the cloud

## Customer challenges

- Fragmented IT landscapes
- Customer-specific modifications
- Complexity of business transformation
- Rapidly changing business environment
- High total cost of ownership

## Modular suite apps around clean core

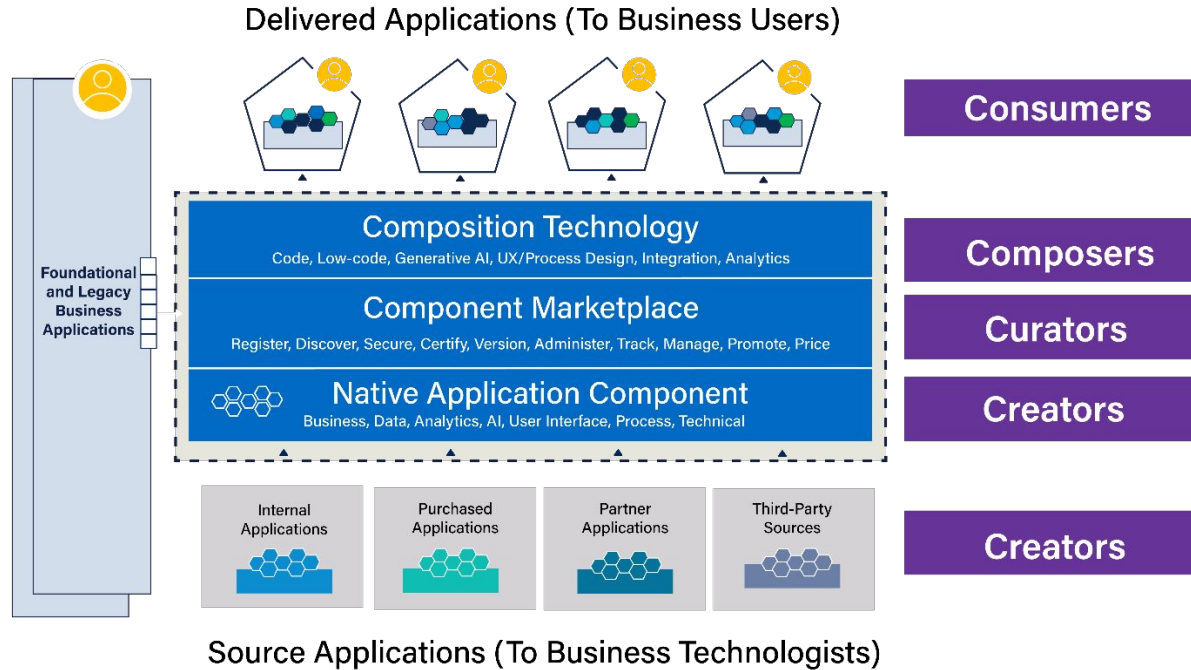
- Best-of-breed capabilities
- E2E processes
- Suite qualities
- Agility and resilience
- Fast path to innovation

# Single Source of Truth for your Business Applications

- ❖ BigLedger envisions an operating system for businesses that is as intuitive and user-friendly as iOS or Android. This business operating system would function as an operating system for businesses, a marketplace for application developers, backend middleware for integration, and a 'Facebook' for businesses.”
- ❖ With this Data Hub approach, integration challenges are addressed as integration remains one of the biggest pain points for businesses due to high costs, time consumption, complexity, and maintenance difficulties.



# Bigledger Composable Enterprise Platform



Composable component    User Interface    API/Event Interfaces

# Serverless Scale

Embrace unprecedented growth with peace of mind

Whether you're facing a sudden surge in traffic or experiencing a seasonal change in demand, our serverless platform automatically adjusts resources to match your exact needs, ensuring your applications never miss a beat.

Scale your applications up or down as needed, catering to changing demands and providing a flexible solution that aligns with your business growth.



# Scalability

Traditional Software



SCALE UP



Upgrading by adding more resources, e.g. expand RAM capacity, or increase disk capacity

BIGLEDGER



SCALE OUT



Serverless infrastructure will scale automatically as the user base grows or usage increases.

The Power of Automation

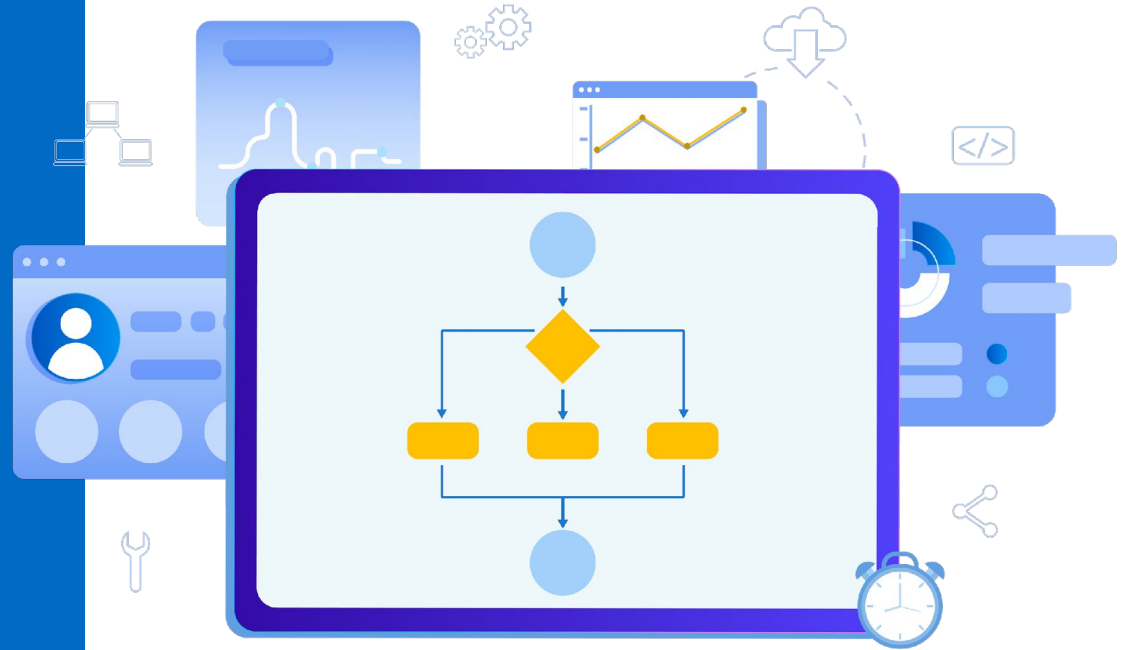
# Workflow Engine



**Unified Workflow Management:** Access task automation and workflow management in a single, integrated tool.



**Improved Cycle Times:** Faster approvals create a more responsive procurement process.

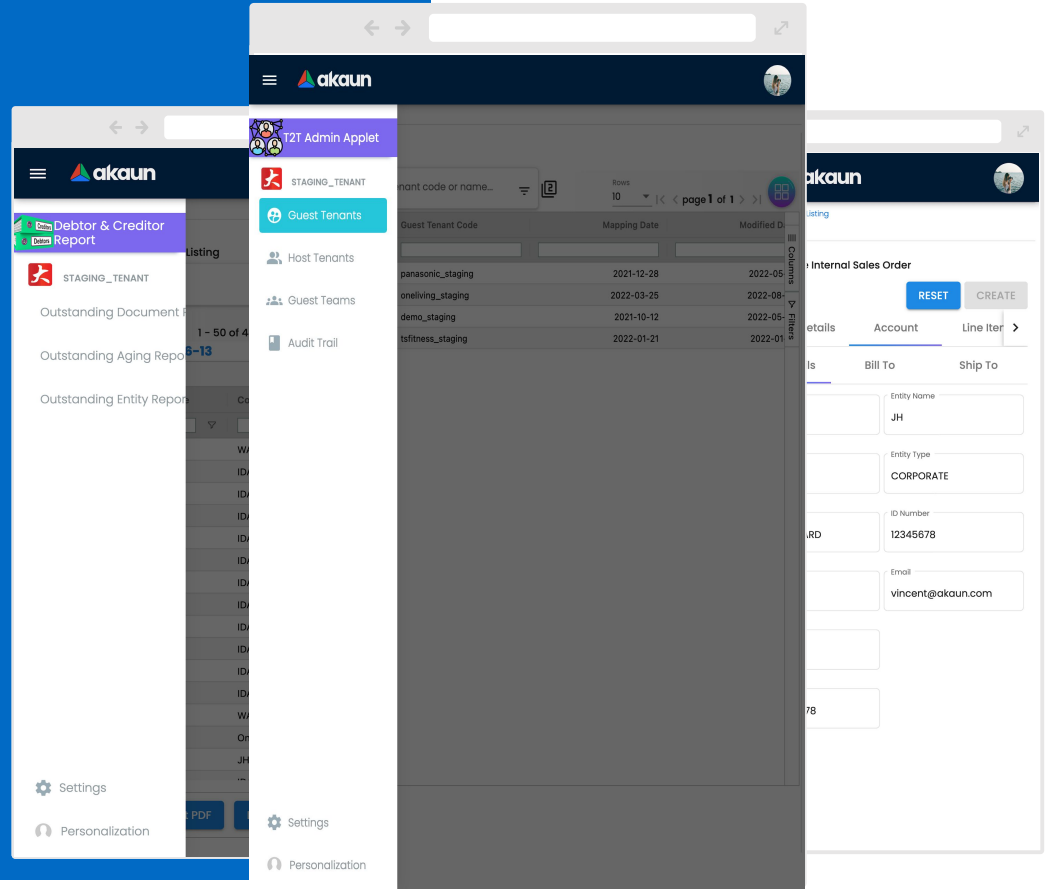


BigLedger automates essential procurement tasks, including order approvals, invoice matching, and supplier purchase order creation. This end-to-end automation reduces manual labor, minimizes human error, and accelerates the procurement cycle. By standardizing these workflows, BigLedger enables teams to shift focus to strategic activities, ensuring fast, accurate, and compliant procurement.

# BigLedge's

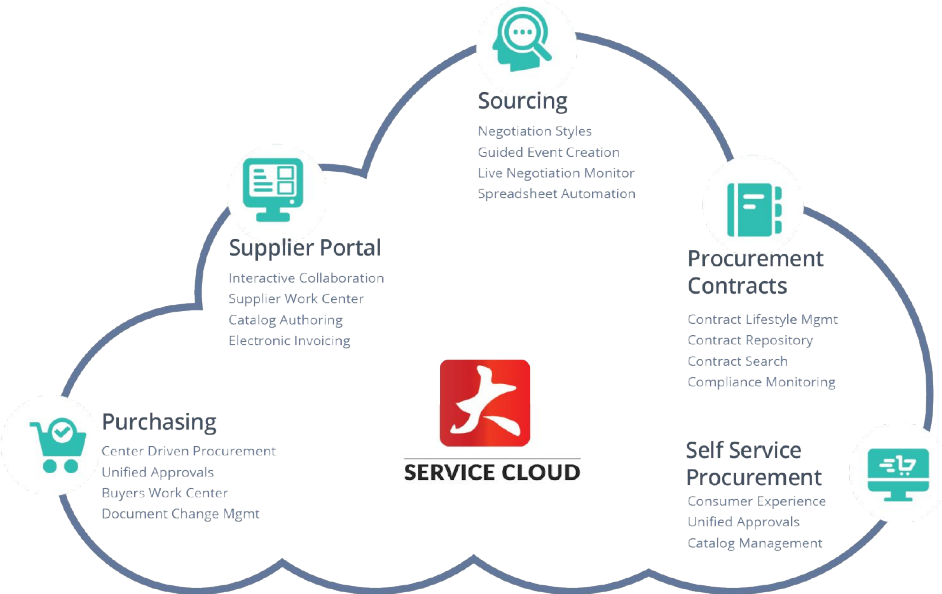
## Procurement Cloud Services

BigLedge's procurement module offers an end-to-end solution that covers the entire procurement process, from sourcing and supplier onboarding to purchase order management, inventory control, and real-time insights. By centralizing procurement, BigLedge helps businesses streamline operations, reduce costs, and improve supplier collaboration.

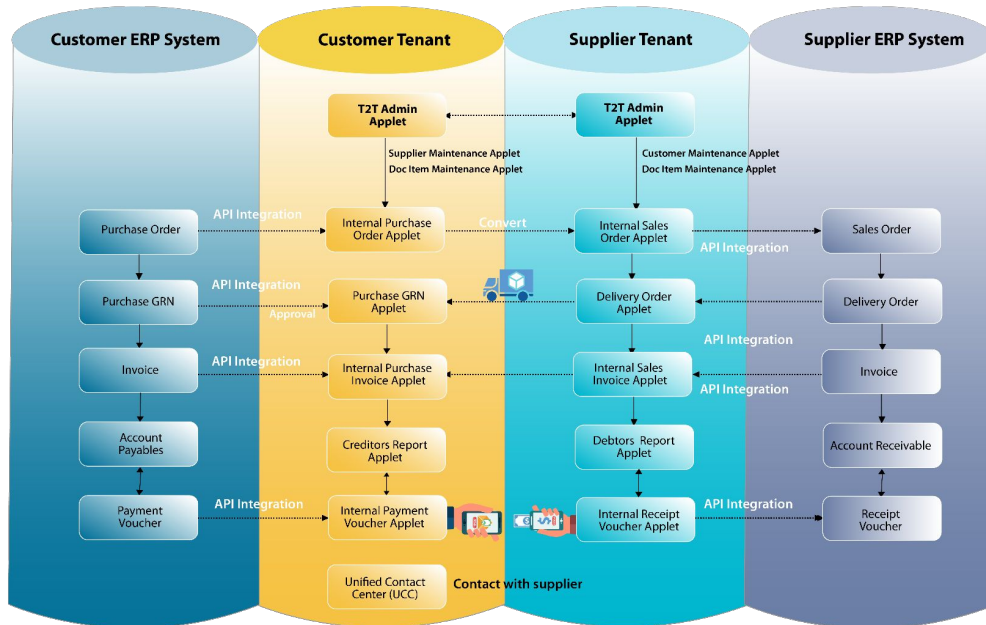


# Key Benefits of BigLedger's Cloud Procurement

- 1. Cost Optimization**  
BigLedger enables standardized procurement practices, allowing businesses to negotiate better contracts, leverage volume discounts, and uncover cost-saving opportunities.
- 2. Process Automation**  
Automating key procurement tasks reduces manual effort, minimizes errors, and accelerates the procurement cycle, from requisition to delivery.
- 3. Real-time Insights**  
BigLedger delivers comprehensive visibility into spend patterns, inventory levels, and supplier performance, empowering businesses with data-driven decision-making.
- 4. Compliance and Risk Management**  
BigLedger ensures compliance with internal policies and external regulations, minimizing risk and ensuring transparent procurement processes.
- 5. Supplier Collaboration**  
The platform enhances supplier communication and collaboration, leading to stronger relationships, smoother supply chain operations, and improved supplier performance.



# Bigledger B2B Process Flow



Think about a blogging website vs Facebook and an E-Commerce software vs Amazon / Lazada / Shopee.

Most business applications are isolated and working independently of each other. With the Akaun Platform, businesses are able to perform the mapping of company / business in one tenant, to the customers / suppliers in other tenants, they are also able to map their item codes among the tenants.

Automation across different tenants on a peer to peer basis is only made possible with the mapping of the master data in place.

# Supplier Management

BigLedger efficient, transparent workflows from supplier management to invoicing and payments.

- ❖ **Supplier Qualification:** Identify and assess suppliers through data collection, questionnaires, and profiles to ensure compliance with business policies.
- ❖ **Risk and Compliance:** Evaluate suppliers based on qualifications, risk factors, and policy adherence.
- ❖ **Proactive Supplier Management:** Cloud-based solutions provide real-time visibility and embedded communication tools for better collaboration and negotiation.
- ❖ **Cost Management:** Enforce compliant spending by directing purchases to approved suppliers, maximizing cost savings through negotiated contracts.
- ❖ **Process Automation:** Automate the source-to-settle process, improving procurement efficiency and reducing risks.



# Streamlining Purchase Requisitions (PR)

\_\_\_\_\_ Simplifies and accelerates the purchase requisition process \_\_\_\_\_

Ensuring all requests follow a standardized workflow from demand to payment. Each step, from requisition creation to approval and final payment, is seamlessly managed within the platform, improving procurement agility and accuracy



- ❖ **Automated Routing:** Requisitions are automatically routed to approvers based on criteria such as cost, urgency, and department.
- ❖ **Guided Templates:** Pre-built, standardized forms ensure compliance and accuracy in requisition submissions.
- ❖ **End-to-End Workflow:** The process covers all stages—from demand, order, and supply to invoicing and payment—ensuring smooth procurement cycles.

# Purchase Order (PO)

Automate ordering processes to increase efficiency and accuracy while reducing costs with pre-packaged content.

Manual ordering processes involve several time-consuming and error-prone processes. By using pre-built content in four key areas, your business can reduce tedious work, increase accuracy, and speed up processing.

- ❖ **Automated Creation:** POs are generated automatically from approved requisitions.
- ❖ **Tracking and Adjustments:** Real-time tracking allows teams to monitor and modify POs.
- ❖ **Increased Efficiency:** Automation frees procurement teams to focus on higher-value tasks.
- ❖ **Reduced Errors:** Pre-built templates streamline processes and reduce manual mistakes.



# Intelligent Enterprise



## Payment Gateway Module

40+ payment gateways  
across 33 countries



## Source-to-pay

Finance and procurement



## Design-to-operate

Manufacturing and supply chain

## Business applications

### Suite qualities

**Consistent** user  
experience



Harmonized look-  
and-feel and  
navigation patterns

**One** workflow  
inbox



Central task  
management

**End-to-end** process  
blueprints



Implementable  
reference  
architectures

**Aligned** domain  
models



Aligned business  
objects across  
applications

**Consistent** security  
and identity management



Central identity  
provisioning and  
authentication

**Coordinated**  
lifecycle  
management



Harmonized  
provisioning setup  
and operations

**Embedded and cross-**  
**product** analytics



Holistic 360-degree  
business and  
customer view

## Business technology platform

# Supplier Collaboration Portal

Empowers suppliers by providing a self-service platform for managing orders, submitting invoices, and tracking payments independently.

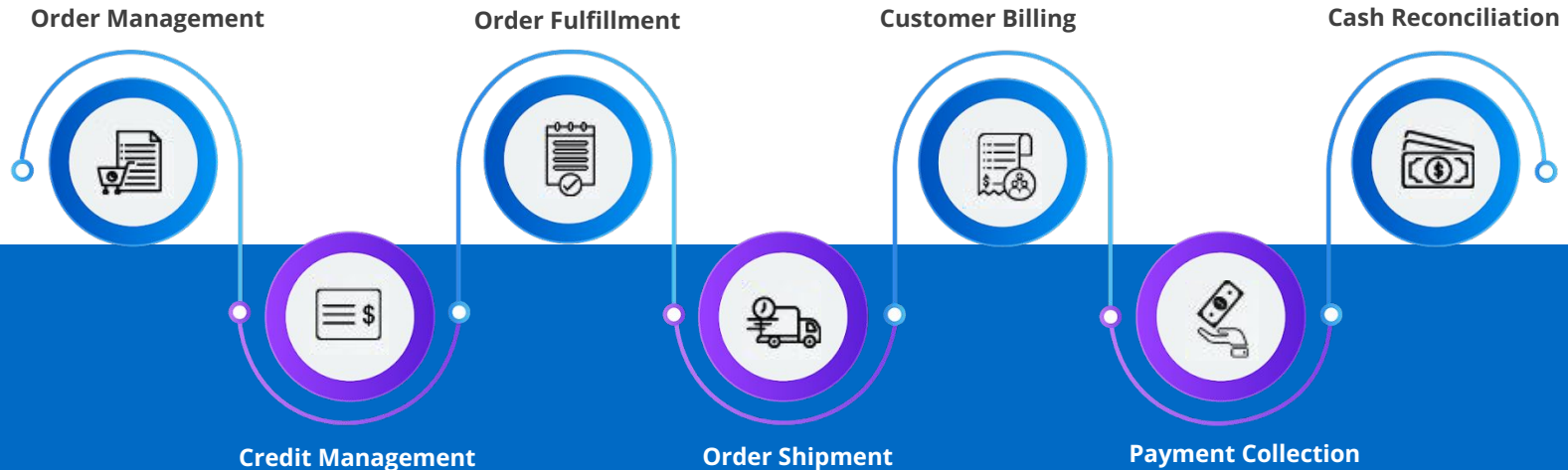
- ❖ **Supplier Self-Service:** Suppliers manage their profiles, orders, and documentation independently, reducing the workload for internal teams.
- ❖ **Real-Time Collaboration:** Instant access to orders, shipments, and invoices enhances communication and improves response times.
- ❖ **Procurement Collaboration:** Extend procurement digitally by sending purchase orders, tracking order confirmation, and monitoring shipments to ensure timely deliveries.

The screenshot displays the 'Internal Purchase Order Applet' interface. The top navigation bar includes a document icon and the text 'Internal Purchase Order Applet'. Below this, a sidebar menu lists various options: STAGING\_TENANT (with a red star icon), Purchase Order (with a document icon), Line Items (with a list icon), Purchase Order Queue (with a play icon), Multi-Purchase Order (with a document icon), File Import (with an upload icon), Intercompany (with a double-headed arrow icon), File Export (with a document icon), Settings (with a gear icon), and Personalization (with a user icon). The main content area shows 'Page 1 of 3' and a table of document numbers. The table has columns for 'Doc No (Tenant)' and 'Columns'. The data rows are: 1000681, 1000689, NaN, 1000693, 1000685, 1000684, 1000680, 1000686, 1000688, and 1000690. A green plus icon is visible in the bottom right corner of the table area. There are also buttons for 'PRINT', 'FINAL', and 'SEND EMAIL'.

Automate & Streamline the Entire Order Fulfillment Process

# Order-To-Cash Process

From order entry to cash collection. It seamlessly integrates various modules, including sales, inventory management, invoicing, and accounts receivable, providing a unified platform for efficient business management.



# Procure-to-pay Journey (P2P)

Our Procure-to-pay (P2P) software automates the procurement process, from requisition to payment

It helps to increase efficiency, improve visibility, reduce risk, and improve supplier relationships for your business.

- Our P2P includes requisition management, approval workflow, vendor management, order management, invoice management, and reporting.



# Managing Supplier Contracts

Streamlines the entire contract lifecycle

From drafting and negotiation to digital signing and renewal alerts. The platform centralizes all contract data, ensuring easy access for audits, compliance checks, and negotiations, while also enabling teams to manage risk effectively.

- ❖ **Accelerate Contract Creation:** Streamline drafting and negotiation with pre-approved templates, legal clauses, and built-in approval flows.
- ❖ **Automated Renewal Alerts:** Notifications for upcoming expirations and renewals to avoid contract lapses.
- ❖ **Ensure Compliance:** Standardize contracts to meet legal and organizational standards, minimizing risk.
- ❖ **Improve Contract Visibility:** Easily access contracts using a secure, centralized repository, with alerts for expiring agreements.
- ❖ **Mitigate Supplier Risk:** Compare contract changes and resolve issues with eSignatures and audit trails.



# e-Signing



## Increased Efficiency

E-signatures help to streamline the document signing process, reducing the time it takes to get documents signed and approved. This can free up employees to focus on other tasks, and can also help to improve customer satisfaction by reducing wait times.



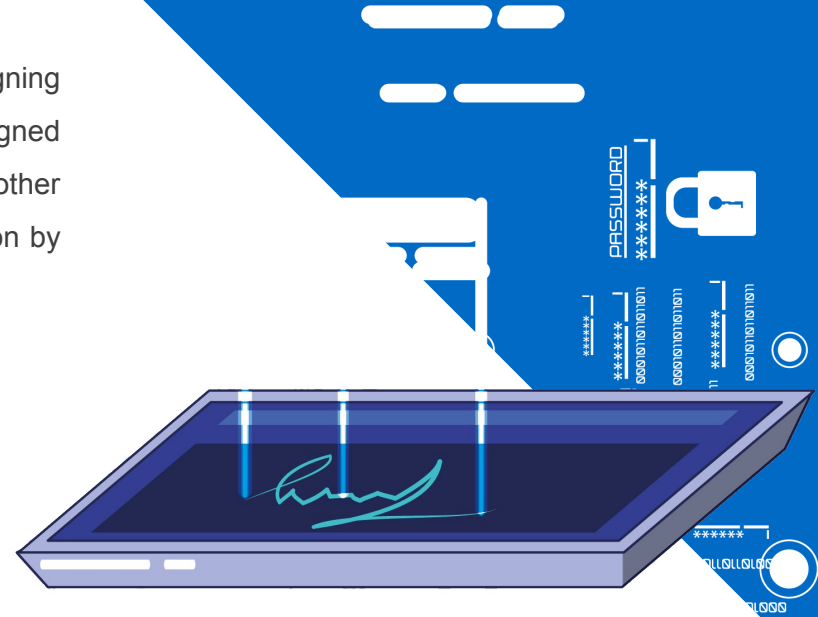
## Reduced Costs

They can also help to reduce the need for travel, as documents can be signed electronically from anywhere with an internet connection.



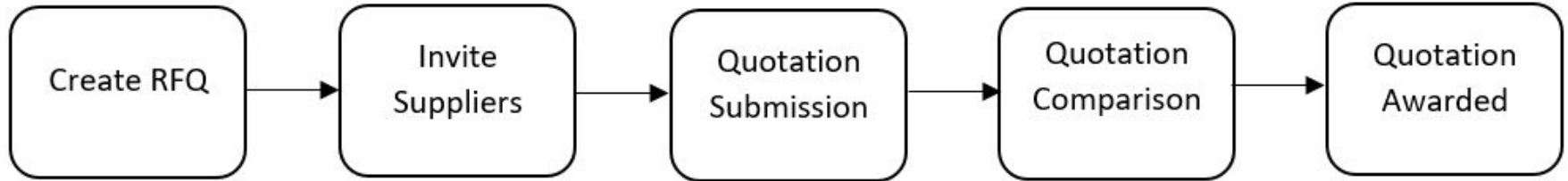
## Seamless Integration

E-signatures help businesses to comply with regulations that require documents to be signed in a secure and verifiable way.



# Request for Quotation (RFQ)

BigLedger streamlines the RFQ process, making it faster and more efficient for procurement teams to source the best suppliers. From simplified RFQ creation to automated bid comparison, the platform ensures that you can quickly identify the most cost-effective and reliable options.



**RFQ Process Flow**

- ❖ **Simplified RFQ Creation:** Quickly generate RFQs from requisitions using pre-populated templates and standardized requirements.
- ❖ **Bid Comparison and Evaluation:** Automated tools compare bids based on price, quality, and delivery terms, ensuring optimal supplier selection.
- ❖ **Efficient Supplier Engagement:** Suppliers receive real-time notifications and can respond directly through the portal, expediting the quotation process.

# Spend Analytics and Insights



## Real-time Insights

Gain instant visibility into financial performance and KPIs for agile decision-making



## Self-Service Analytics

Empower finance teams with easy-to-use tools for custom reports and data exploration



## Cost Efficiency

Scale analytics capabilities according to business needs, ensuring cost-effective operations



## Seamless Integration

Consolidate procurement data from multiple sources for a comprehensive view

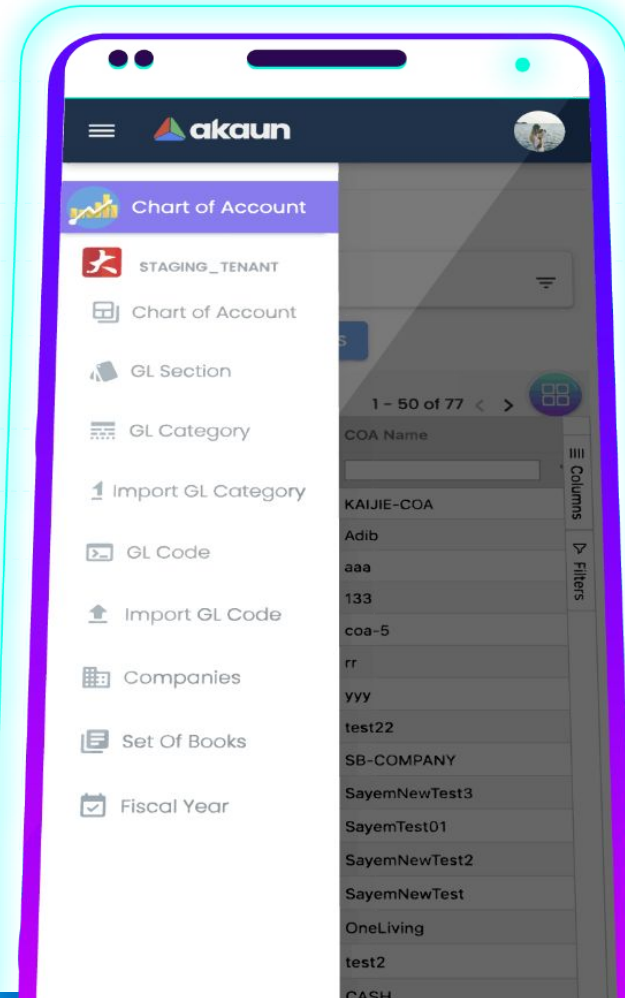


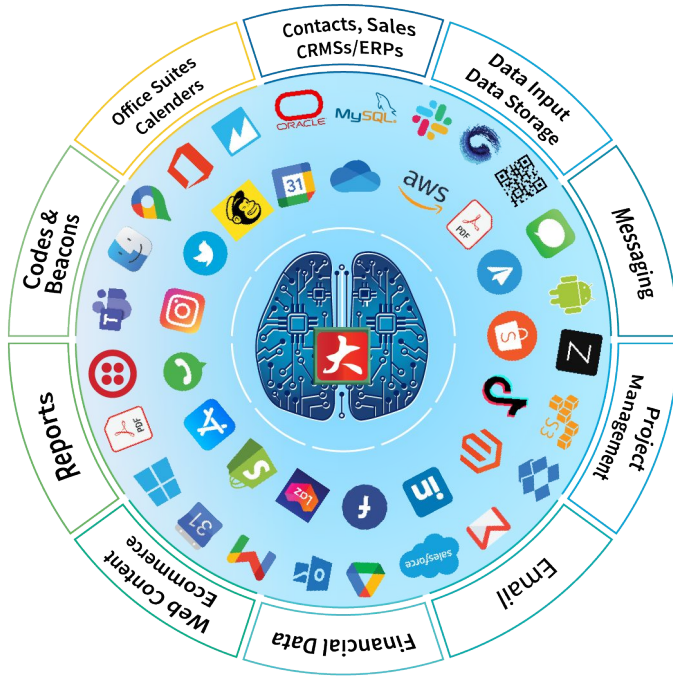
# Integration with ERP and Accounting Systems

BigLedger seamlessly integrates procurement with ERP and accounting systems, ensuring consistent, real-time data flow across departments. This integration reduces manual data entry, improves reconciliation accuracy, and supports consolidated financial reporting.

## Key Features:

- **Unified Data Flow:** Real-time sync of procurement and finance data.
- **Scalable Infrastructure:** Automatically adjusts resources for peak periods.
- **Enhanced Financial Control:** Multi-ledger support for complex organizations.
- **Automated Payments:** Integrated payment gateways for secure transactions.





Cloud-native era for your business

# Bigledger goes beyond ERP system

Businesses are able to consolidate all their data scattered across multiple systems and manage them all in one place.

# Elevating B2B Procurement

MDEC PEPPOL Accreditation \_\_\_\_\_

As an MDEC-accredited PEPPOL Service Provider (SP) and PEPPOL Ready Service Provider (PRSP), BigLedger enables secure and standardized document exchanges such as e-orders, e-catalogues, and invoice responses.

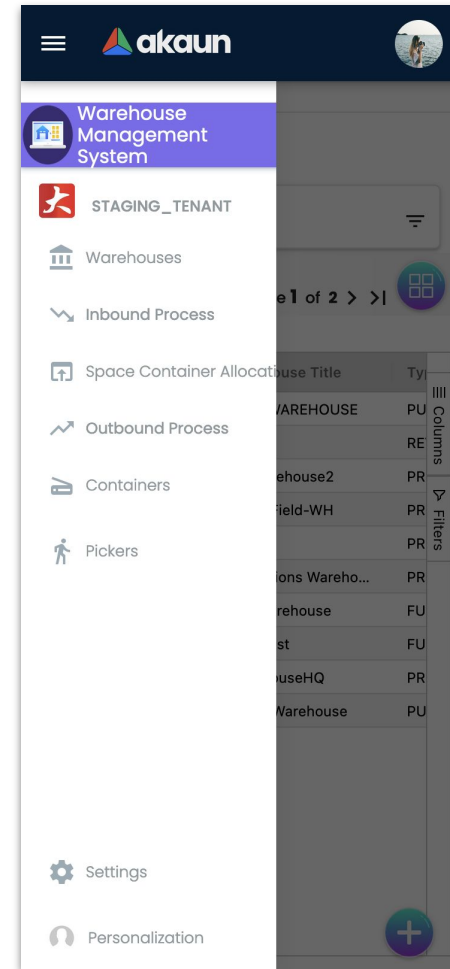
- ❖ **PEPPOL in BigLedger:** Seamlessly embedded in BigLedger's procurement module, PEPPOL supports interoperability for exchanging procurement documents with suppliers and buyers on the PEPPOL network.
- ❖ **Enhanced Efficiency:** PEPPOL automation reduces manual intervention, supporting faster transactions and improving the overall procurement cycle.
- ❖ **Compliance:** PEPPOL ensures that businesses meet international procurement and invoicing standards, reducing compliance risks.

The screenshot displays the 'akaun' mobile application interface. At the top, there is a navigation bar with the 'akaun' logo and a user profile picture. A sidebar menu is open, listing several options: 'My Peppol Admin Applet' (highlighted in purple), 'DEMO\_STAGING', 'Posting Queue', 'Waiting Queue', 'Internal Submission', 'External Reception', 'Peppol Config', and 'Monthly Report'. In the background, a table of document exchanges is visible, with columns for document type and status. A 'Peppol Access Point CERTIFIED PROVIDER' badge is overlaid at the bottom right of the screenshot. The 'profitersonalization' logo is visible at the bottom left of the app interface.

# Inventory Management Integration

Ensuring real-time updates and optimized stock management. This integration helps reduce stockouts, prevents overstock, and supports efficient inventory control.

- ❖ **Automatic Reordering:** Stock level alerts trigger replenishments based on pre-set thresholds.
- ❖ **Efficient Inventory Control:** Optimizes inventory management, reducing warehousing costs.
- ❖ **WMS Integration:** Receives and processes various warehouse management system (WMS) transactions, including adjustments, receipts, and transfers, ensuring accurate material tracking.
- ❖ **Inventory Reconciliation:** Real-time updates resolve inventory discrepancies, enhancing stock balance accuracy.

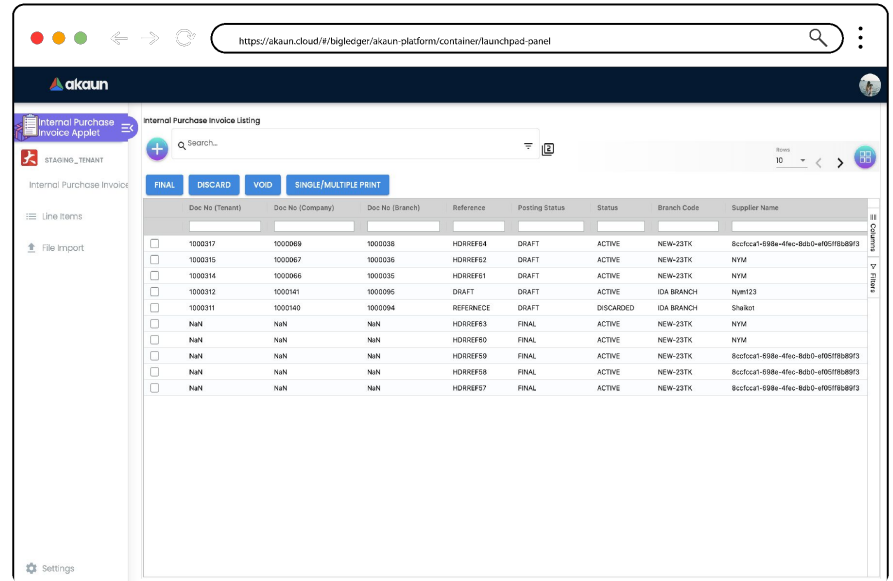


# E-Invoicing Solution

Enhance Cash Flow And Efficiency

. This cloud-based solution offers unmatched scalability with a pay-as-you-use model, adapting seamlessly to business needs.

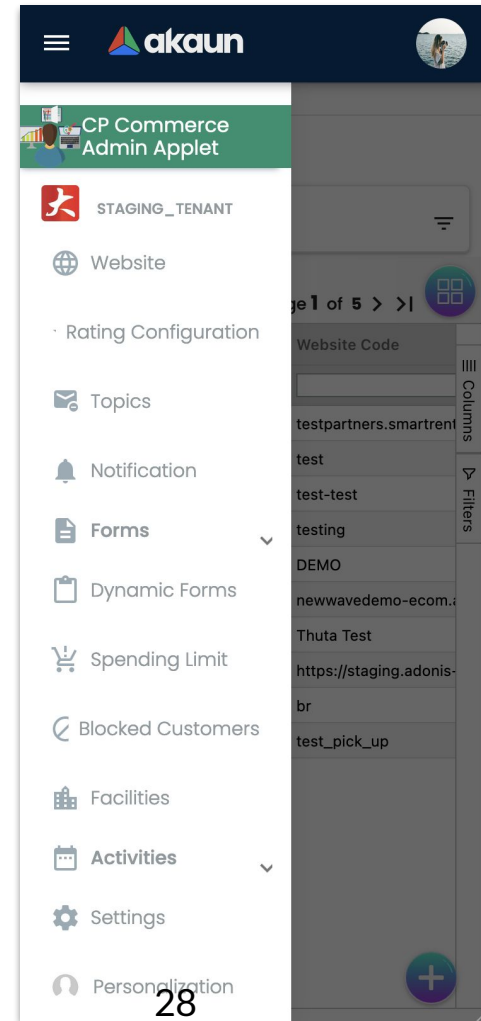
- ❖ **End-to-End Automation:** Automated invoice generation, validation, and storage, catering to B2B, B2C, and B2G transactions. With instant processing, businesses can handle high transaction volumes without delay.
- ❖ **Integrated Payment Gateways:** Streamlines payments by integrating with multiple payment options, enhancing cash flow visibility, and reducing Accounts Receivable (AR) and Accounts Payable (AP) cycle times.



	Doc No (Tenant)	Doc No (Company)	Doc No (Branch)	Reference	Posting Status	Status	Branch Code	Supplier Name
<input type="checkbox"/>	1000317	1000989	1000308	HDRRF64	DRAFT	ACTIVE	NEW-23TK	8c0cfca1-698e-4f6c-8000-a005f8b09f3
<input type="checkbox"/>	1000315	1000987	1000305	HDRRF62	DRAFT	ACTIVE	NEW-23TK	NYM
<input type="checkbox"/>	1000314	1000986	1000305	HDRRF61	DRAFT	ACTIVE	NEW-23TK	NYM
<input type="checkbox"/>	1000312	1000141	1000395	DRAFT	DRAFT	ACTIVE	IDA BRANCH	Nym23
<input type="checkbox"/>	1000311	1000140	1000394	REFRMECE	DRAFT	DISCARDED	IDA BRANCH	Shakti
<input type="checkbox"/>	NAN	NAN	NAN	HDRRF63	FINAL	ACTIVE	NEW-23TK	NYM
<input type="checkbox"/>	NAN	NAN	NAN	HDRRF60	FINAL	ACTIVE	NEW-23TK	NYM
<input type="checkbox"/>	NAN	NAN	NAN	HDRRF59	FINAL	ACTIVE	NEW-23TK	8c0cfca1-698e-4f6c-8000-a005f8b09f3
<input type="checkbox"/>	NAN	NAN	NAN	HDRRF58	FINAL	ACTIVE	NEW-23TK	8c0cfca1-698e-4f6c-8000-a005f8b09f3
<input type="checkbox"/>	NAN	NAN	NAN	HDRRF67	FINAL	ACTIVE	NEW-23TK	8c0cfca1-698e-4f6c-8000-a005f8b09f3

# E-invoice for B2B e-commerce

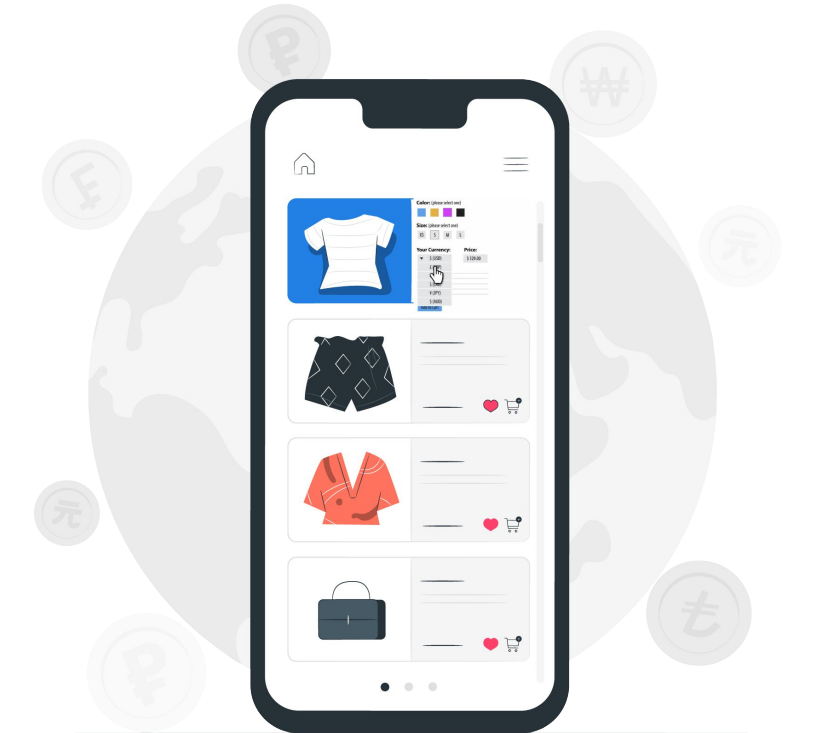
- ❖ B2B (business-to-business) electronic invoicing **is essential to generate revenue**, because businesses require invoices in order to approve payments for goods and/or services.
- ❖ Handling eCommerce with the option of electronic invoicing becomes simpler, **removing the need for paper invoices** which **improves cash flow, reduces errors, and enhances overall efficiency in the B2B procurement process**
- ❖ Instantly start **accessing e-commerce and download professional invoices** for your e-commerce business with our CP-Commerce platform to help customers understand exactly what they've ordered and who to contact for support.



# B2B Payments for e-commerce

Integrating payment gateways with B2B eCommerce platforms enhances the payment process by offering multiple secure payment options to buyers, ensuring timely and accurate transactions after they receive each B2B invoice.

CP-Commerce has integrated **Payment Gateways** across more than **33 countries**. We support **multiple currencies**, and **international buyers** are able to view the price in their own currency before purchasing the products.

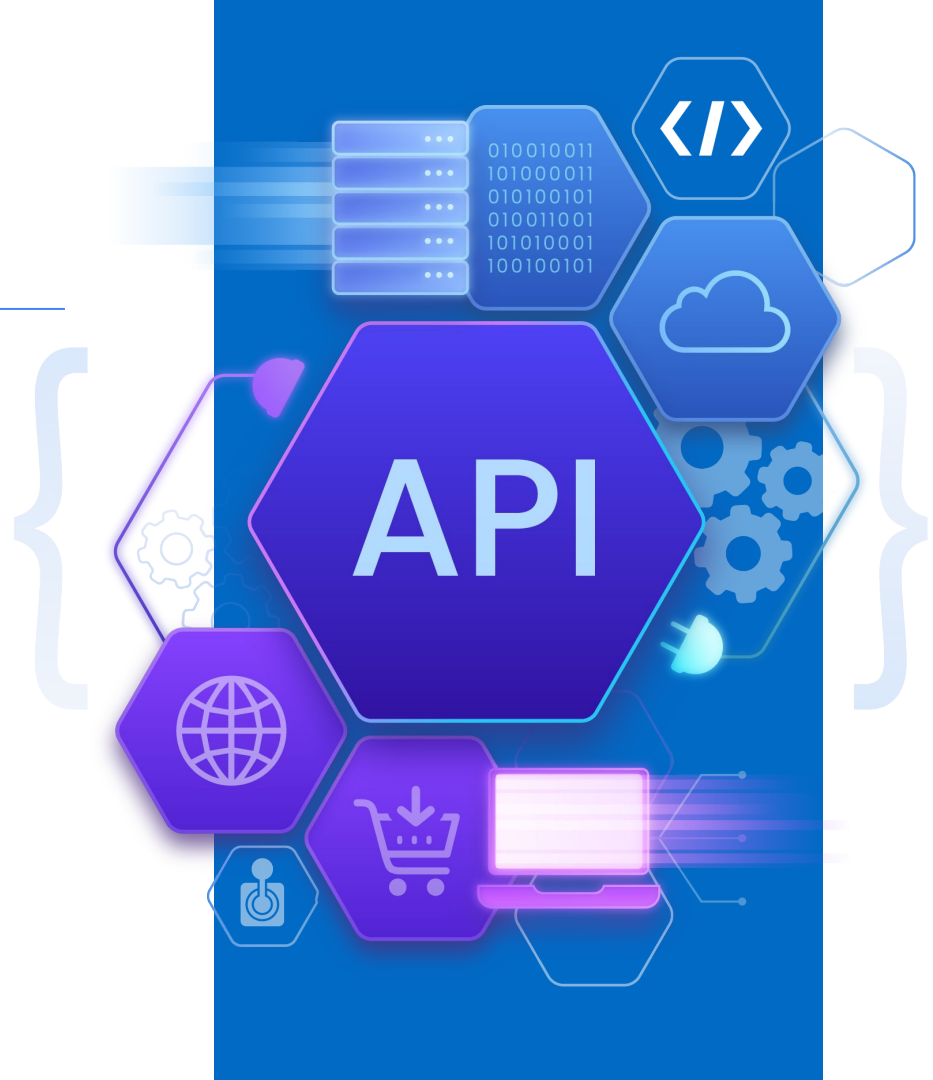


Automate Business Processes end-to-end

# Integration Capability

Our **operational data hub** goes beyond standard data storage. We provide **seamless integration** with your favorite software systems.

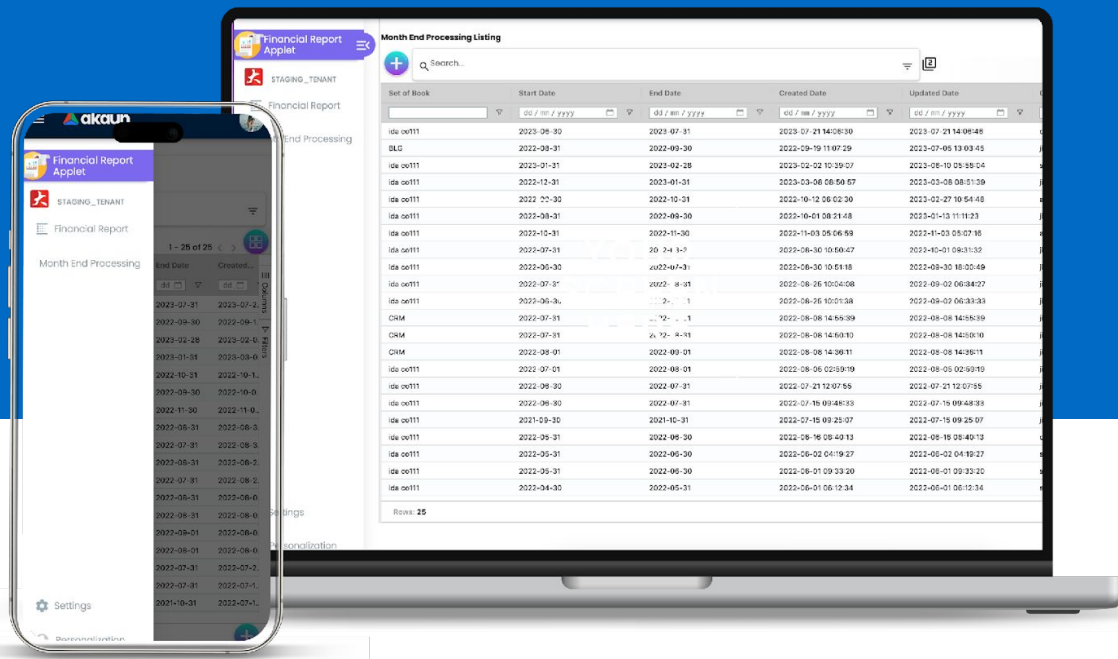
The comprehensive API provides the best user-experience on **all devices** – smartphones, laptops & tablets.



# Mobile and Cloud Access

BigLedger's mobile-friendly, cloud-based infrastructure allows teams to access procurement tools on the go. Users can approve requisitions, monitor orders, and access reports from anywhere, ensuring agile decision-making and business continuity.

- **Remote Access:** Mobile and cloud functionality for efficient approvals and updates.
- **Secure Data Storage:** Ensures data protection and compliance with encrypted access.

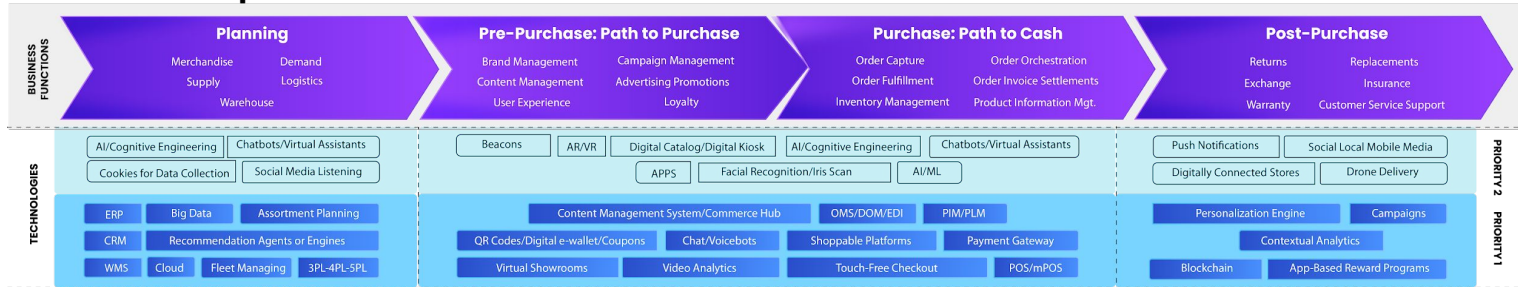


# Explore - The omnichannel Retail Framework

## Consumer Touchpoints



## Critical Components



## Security and Identity Management

## Enterprise Integration

## Key Functions Realized



Omnichannel is an indispensable part of an organization's strategy, enabling businesses to understand the evolving needs of the customer

# More Information



## Office Address

UNIT 3C&4C, Jalan USJ 10/1j, UEP SUBANG JAYA,  
47620 Subang Jaya, Selangor



## Email & Website

[sales@wavelet.net](mailto:sales@wavelet.net)

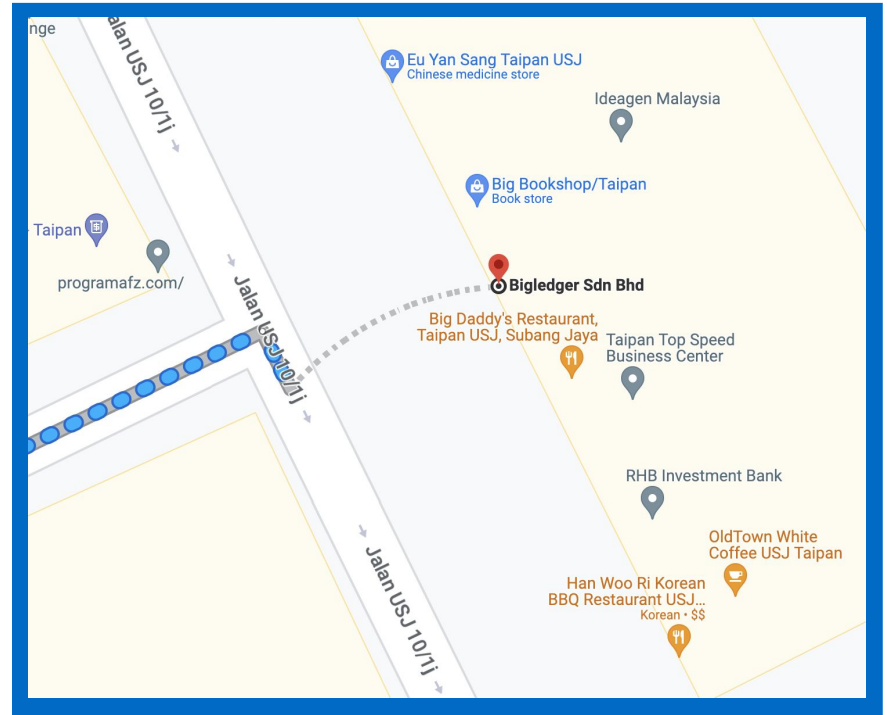
<https://bigledger.com/>

<https://wavelet.net/>



## Our Phone

+60 16 299 1588



 wavelet.net  akaun  bigledger

# Thank You