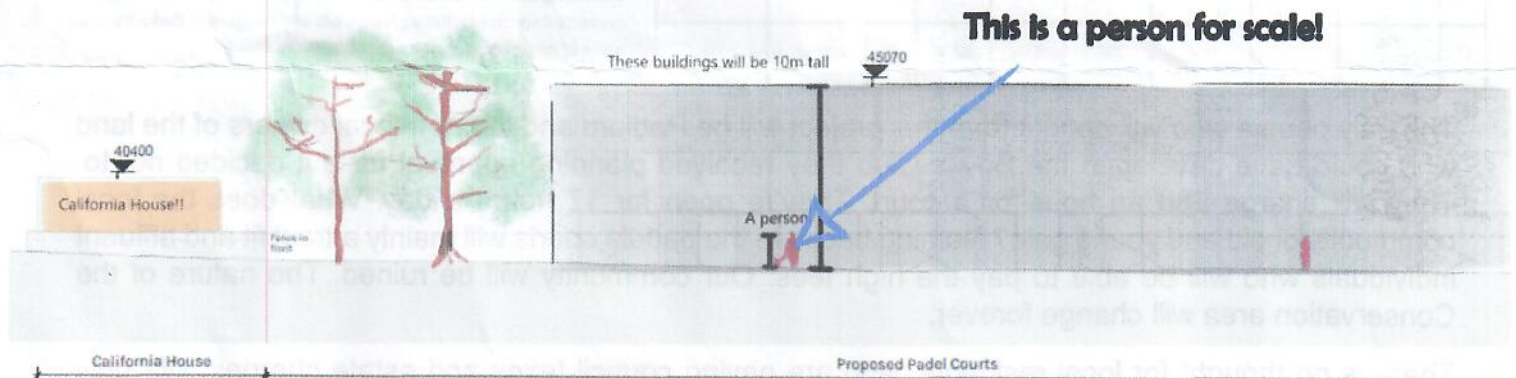


STOP THE BLACKHEATH PARK PADEL COURT COMPLEX



Planning application **25/0793/F** has been submitted on 14th March to build **8 x padel courts** on the site of the old tennis courts on Blackheath Park. They will stand at **10 metres high!** Totally dominating the skyline. You can go to Padium in Canary Wharf to see the scale. It is nearly impossible to grasp until you see it in the flesh. This will totally change the nature of the area. From trees, birds, bats, we will now have the sky blotted out by this monumental structure.



These courts **will be open from 6am to 11pm, every day of the week. That's 17 hours a day! All year round!**

We will have 8 courts and possible 32 players at any given time until 11pm, with others waiting in the wings or in their cars for their turn. They will drive to and from the courts along Blackheath Park and Morden Road. Roads we pay to maintain.

Padel is great sport but it is a noisy sport. If you Google it you will see the protests up and down the country. House prices fall as no one wants to live near the courts.

Not only will you have the noise from the courts themselves, but there will be the hum from the fans and infrastructure. You notice that when you stand in front of them. It feels like an industrial complex.

To add insult to injury the entire complex will be **lit by floodlights**, causing light pollution, spooking wildlife such as bats. The application has considerable flood lighting planned throughout, as well as the removal of 3 mature trees. The planning argues that the courts are outside of the conservation area, ignoring the fact we live around this plot and the only access to it is through the streets that we local residents are paying for.

BLACKHEATH PADEL COURT, BLACKHEATH EXTERNAL LIGHTING ASSESSMENT



BristolLive

NEWS CITY ROVERS WHAT'S ON MORE

BUY A PAPER FUNERAL NOTICES JOBS BOOK AN AD BUY A PHOTO ADVERTISE WITH

5. LUMINAIRE SELECTION AND TYPE

The following luminaires have been selected:

Qty	Range	Mounting Height (m)	Mounting Type	Wattage (W)	Lm/W	LOR %	RA	L2A Compliant	BREEAM Compliant
32	Keno 2	5m	Column	180W	133.86	100%	80	Yes	Yes
19	Finn	3m	Wall	8W	107.38	100%	80	Yes	Yes
9	Periscope	0.50m	Ground	14W	60.36	100%	70	Yes	Yes
8	Hydrofloor Micro 2	0.01m	Ground	3W	33.33	100%	70	Yes	Yes
15	NANO XS	3.8m	Ceiling	2.5W	104	100%	70	Yes	Yes
17	Tag Medium	3m	Wall	8W	93.5	100%	70	Yes	Yes



Padel courts at a different David Lloyd Club (Image: David Lloyd Clubs)

Councillors have delayed a decision on whether to let a David Lloyd gym in Bristol keep two new floodlit padel courts built without planning permission amid fears for wildlife in nearby woods. The city council's development control committee voted by 7-2 to defer an [application by the private premium fitness club in Westbury-on-Trym](#) because of conflicting evidence about the presence of and potential harm to [protected species including bats, owls and badgers at Badock's Wood](#), a site of nature conservation interest (SNCI).

The only people who will benefit from this project will be Padium and the non-local owners of the land who could have developed the Bowls Club they received planning approval for but decided not to. They will charge £80 an hour for a court. They're open for 17 hours a day. What does the local community of old and young gain? Nothing because the paddle courts will mainly attract fit and affluent individuals who will be able to pay the high fees. Our community will be ruined. The nature of the Conservation area will change forever.

There is no thought for local residents, who are paying council taxes and estate charges. We only found out about this application by accident; it was most probably submitted at this time to ensure it is not noticed due to school Easter holidays with many local people away. No one has been by to ask local opinion. Dropped a note through the door. The planning notice outside the courts is still for the bowls club that was originally approved on 5th June 2018! This is shady behaviour.

There's very little time to act. **PLEASE register your complaint on the Royal Greenwich Planning Website ASAP.** If there are no objections, there is a risk that the application will be approved after Easter. **The QR code below links to the planning website.**

We need to act quickly if we're to make any difference. There are 28 documents on the planning site. They're throwing money at this and we need to make our local voices heard. We also suggest writing to Matthew Pennycook, our MP. (matthew.pennycook.mp@parliament.uk)

Thank you.

Scan for planning page

