



THE RATTLE

DESIGNED TO BEND. ENGINEERED TO HOLD.

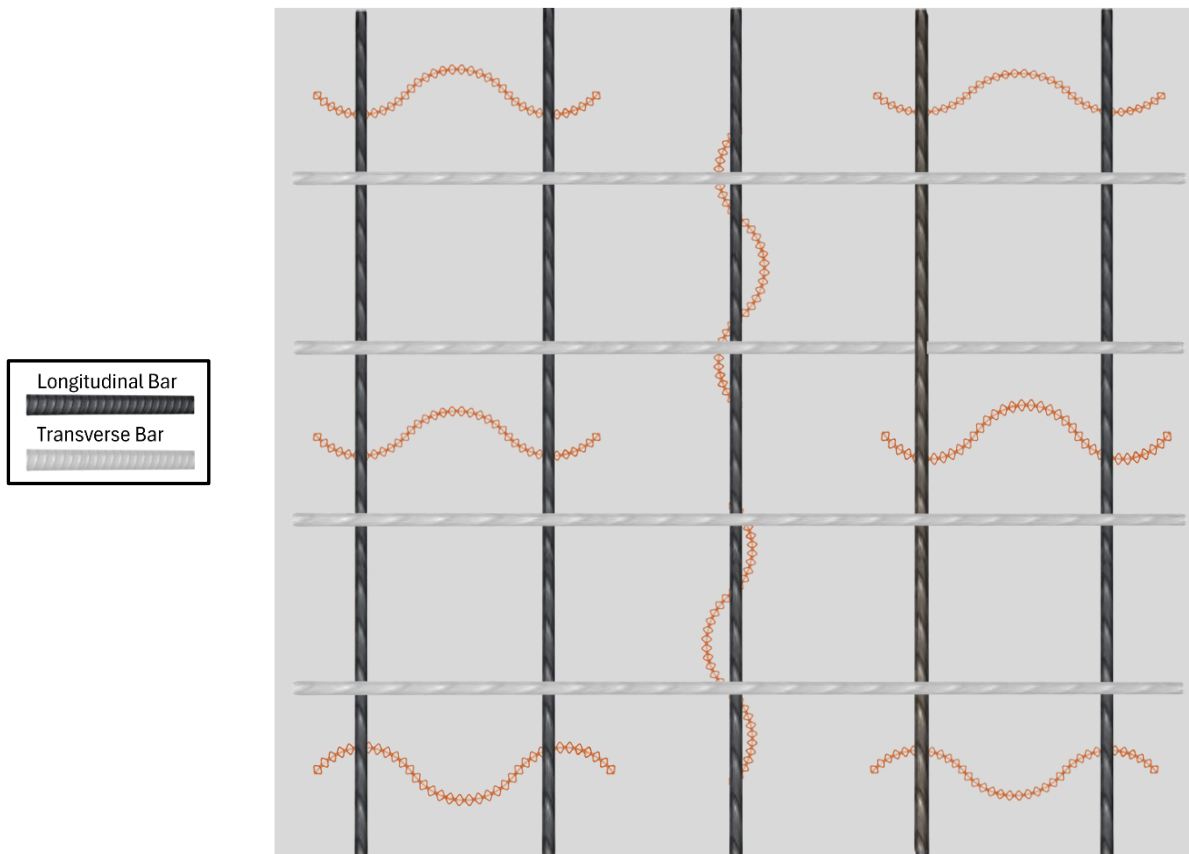
Installation / Placement Guidance:

For our Rattler supports, place each chair **under the longitudinal bars**, spacing them **24"–36"** apart for standard applications and **12"–18"** apart for heavy loads. Just drop The Rattler, set your rebar, and pour—no tying, no fumbling, no wasted time.

The patented S-shape design locks everything in, keeping reinforcement exactly where it needs to be **before, during, and after the pour**—without you having to fix a thing.

No bending over to place it. No bending over to fix it. No bending over at all.

Simply ... **Walk, Drop, and Go.**



Note: For optimal support and stability, The Rattler must be placed under the longitudinal bars and spaced 24"–36" apart (12"–18" for heavy loads); improper placement may compromise reinforcement integrity and mat consistency.

MADE IN



www.therattlerchair.com

