

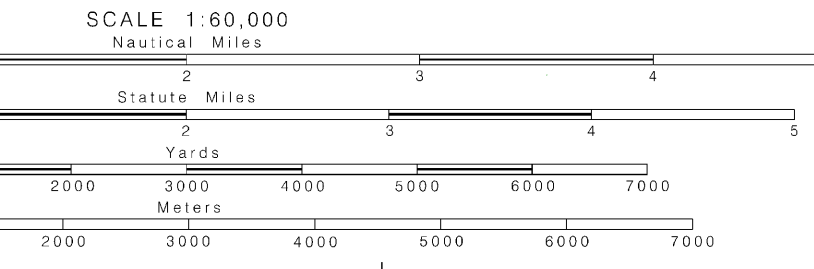
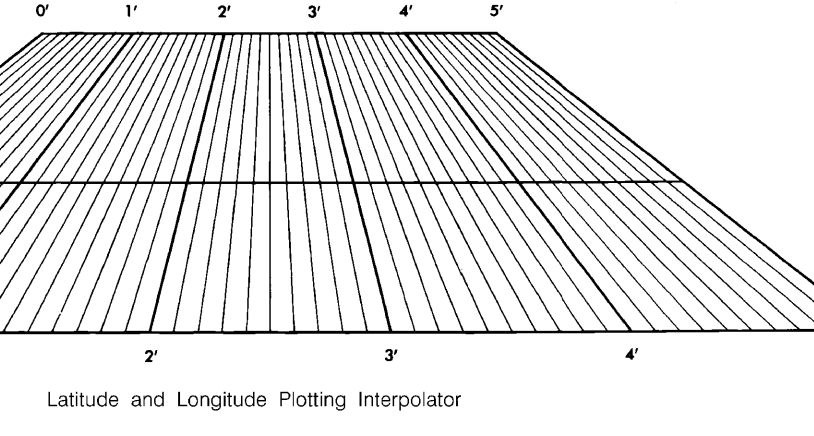
**NOTE D**  
Mariners are warned that numerous uncharted stakes and fishing structures, some submerged, may exist in the area of this chart. Such structures are not charted unless known to be permanent.

**HORIZONTAL DATUM**  
The horizontal reference datum of this chart is North American Datum of 1983 (NAD 83), which for charting purposes is considered equivalent to the World Geodetic System of 1984 (WGS 84). Geographic positions referred to the North American Datum of 1927 do not require conversion to NAD 83 for plotting on this chart.

**NOTE A**  
Navigation regulations are published in Chapter 2, U.S. Coast Pilot 6. Additional regulations to Chapter 2 are published in the Notice to Mariners. Information concerning the regulations may be obtained at the Office of the Commander, 9th Coast Guard District in Cleveland, Ohio or at the Office of the District Engineer, Corps of Engineers in Detroit, Michigan.  
Refer to charted regulation section numbers.

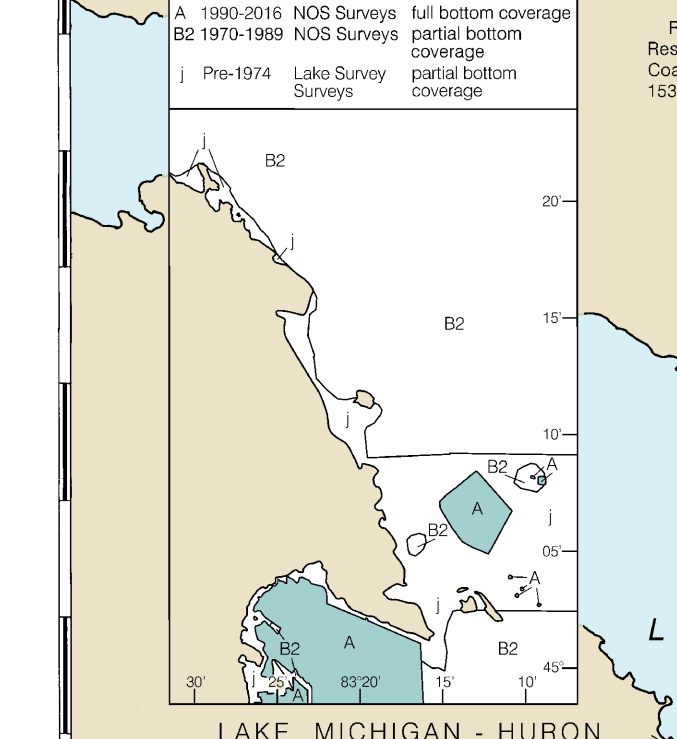
**NOTE Z**  
**NO-DISCHARGE ZONE, 40 CFR 140**  
Michigan waters of Lakes Michigan, Huron, Superior, Erie and St. Clair, all waterways connected thereto, and all inland lakes are designated as a No-Discharge Zone (NDZ). This chart falls entirely within the limits of a No-Discharge Zone (NDZ). Under the Clean Water Act, Section 312, all vessels operating within a No-Discharge Zone (NDZ) are completely prohibited from discharging any sewage, treated or untreated, into the waters. Commercial vessel sewage shall include graywater. All vessels with an installed marine sanitation device (MSD) that are navigating, moored, anchored, or docked within a NDZ must have the MSD disabled to prevent the overboard discharge of sewage (treated or untreated) or install a holding tank. Regulations for the NDZ are contained in the U.S. Coast Pilot. Additional information concerning the regulations and requirements may be obtained from the Environmental Protection Agency (EPA) web site: [http://www.epa.gov/owow/oceans/regulatory/vessel\\_sewage/](http://www.epa.gov/owow/oceans/regulatory/vessel_sewage/).

**NOTES**  
PLANE OF REFERENCE OF THIS CHART (Low Water Datum) is 577.5 ft. Referred to mean water level at Rimouski, Quebec, International Great Lakes Datum (1985).  
SAILING DIRECTIONS: Bearings of sailing courses are true and distances given thereon are in statute miles between points of departure.  
AIDS TO NAVIGATION: Consult U.S. Coast Guard Light List for supplemental information concerning aids to navigation.  
SYMBOLS AND ABBREVIATIONS: For complete list of symbols and abbreviations see Chart No. 1.  
BRIDGE AND OVERHEAD CABLE CLEARANCES: When the water surface is above Low Water Datum, bridge and overhead clearances are reduced correspondingly. For clearances see U.S. Coast Pilot 6.  
AUTHORITIES: Hydrography and Topography by the National Ocean Service, Coast Survey, with additional data from the Corps of Engineers, Geological Survey, and U.S. Coast Guard.

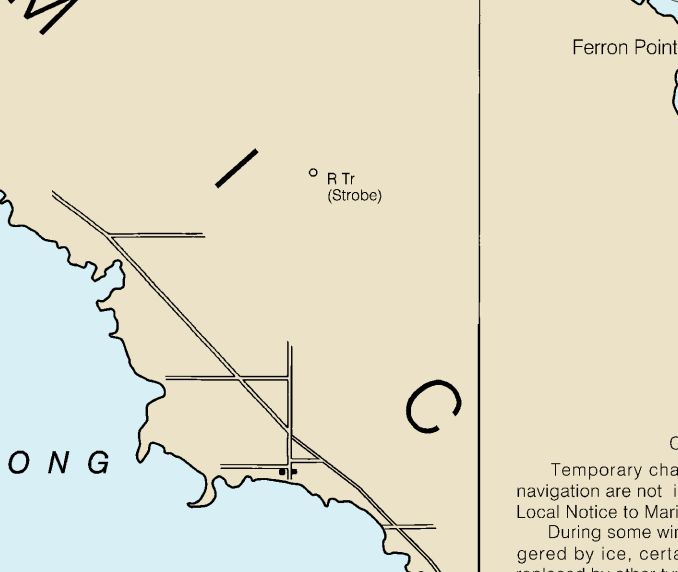


**NOAA WEATHER RADIO BROADCASTS**  
The NOAA Weather Radio station listed below provides continuous weather broadcasts. The reception range is typically 20 to 40 nautical miles from the antenna site, but can be as much as 100 nautical miles for stations at high elevations.  
Alpena, MI KIG-83 162.550 MHz

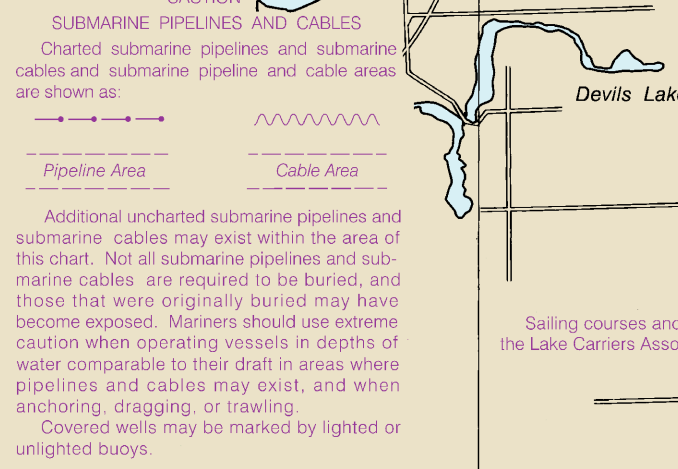
**SOURCE DIAGRAM**  
The outlined areas represent the limits of the most recent hydrographic survey information that has been evaluated for charting. Surveys have been bounded in this diagram by date and type of survey. Channels maintained by the U.S. Army Corps of Engineers are periodically re-surveyed and are not shown on this diagram. Refer to Chapter 1, United States Coast Pilot.



**POLLUTION REPORTS**  
Report all spills of oil and hazardous substances to the National Response Center via 1-800-424-8802 (toll free), or to the nearest U.S. Coast Guard facility if telephone communication is impossible (33 CFR 153).



**CAUTION**  
Submarine pipelines and cables. Submarine pipelines and cables are shown as follows:  
Pipeline Area  
Cable Area  
Additional uncharted submarine pipelines and submarine cables may exist within the area of this chart. Not all submarine pipelines and submarine cables are required to be buried, and those that were originally buried may have become exposed. Mariners should use extreme caution when operating vessels in depths of water comparable to their draft in areas where pipelines and cables may exist, and when anchoring, dragging, or trawling. Covered wells may be marked by lighted or unlighted buoys.



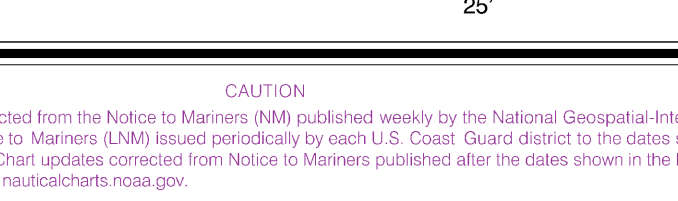
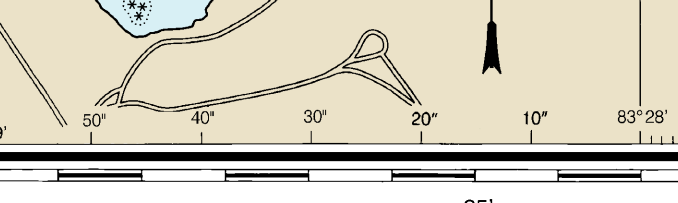
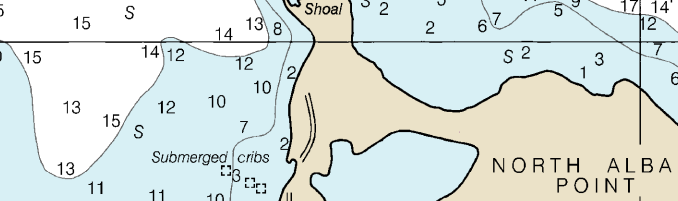
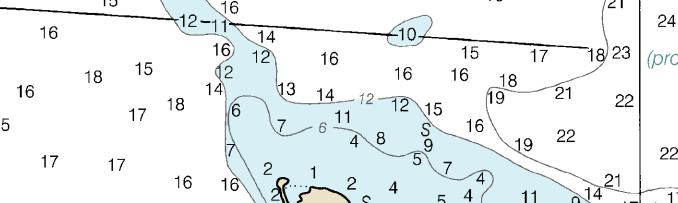
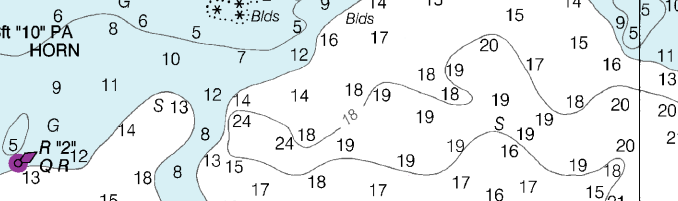
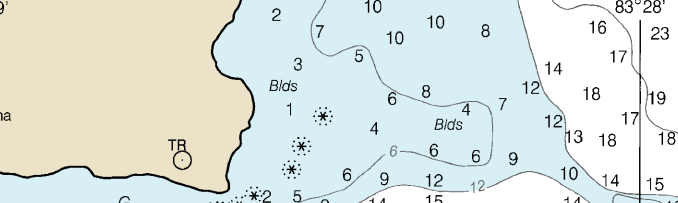
**CAUTION**  
The prudent mariner will not rely solely on any single aid to navigation, particularly on floating aids. See U.S. Coast Guard Light List and U.S. Coast Pilot for details.

**CAUTION**  
RADAR REFLECTORS  
Radar reflectors have been placed on many floating aids to navigation. Individual radar reflector identification on these aids has been omitted from the chart.

**CAUTION**  
POTABLE WATER INTAKE  
Vessels operating in fresh water lakes or rivers shall not discharge sewage, oil, ballast, or bilge water within such areas adjacent to domestic water intakes as are designated by the Commissioner of Food and Drugs (21 CFR 1250.93). Consult U.S. Coast Pilot 6 for important supplemental information.

**CAUTION**  
Due to periodic high water conditions in the Great Lakes, some features charted as visible at Low Water Datum may be submerged, particularly in the near shore areas. Mariners should proceed with caution.

**CAUTION**  
Limitations on the use of radio signals as aids to marine navigation can be found in the U.S. Coast Guard Light Lists and National Geospatial Intelligence Agency Publication 117.  
Radio direction-finder bearings to commercial broadcasting stations are subject to error and should be used with caution.  
Station positions are shown thus:  
(O) Accurate location (e) Approximate location



This chart has been corrected from the Notice to Mariners (NM) published weekly by the National Geospatial Intelligence Agency and the Local Notice to Mariners (LNM) issued periodically by each U.S. Coast Guard District to the dates shown in the lower left hand corner. Chart updates corrected from Notice to Mariners published after the dates shown in the lower left hand corner are available at [nauticalcharts.noaa.gov](http://nauticalcharts.noaa.gov).

Use NOAA electronic navigational charts for the most up-to-date information.  
27th Ed., Nov 2013, Last Correction: 2/21/2020. Cleared through:  
LNM 0721 (2/16/2021), NM 0921 (2/27/2021), CDS 0121 (1/26/2021)

This chart was distributed as a PDF (Portable Document Format). Printing PDFs may alter this chart was distributed as a PDF (Portable Document Format). Printing PDFs may alter charts provided by NOAA certified Print on Demand (POD) providers fulfill a vessel's requirement to carry a navigational chart "published by the National Ocean Service" in accordance with federal regulations, including but not limited to 33 C.F.R. 164.33(a), 33 C.F.R. 164.72(b), and 46 C.F.R. 28.225(a). POD charts meet stringent print standards and can be recognized by an official certification of authenticity printed on the chart. A list of POD providers can be found at: [nauticalcharts.noaa.gov/pod](http://nauticalcharts.noaa.gov/pod)

To ensure that this chart was printed at the proper scale, the bottom should measure on inches (152 millimeters). If the lines do not measure as inches (152 millimeters), this copy is not certified for navigation.