

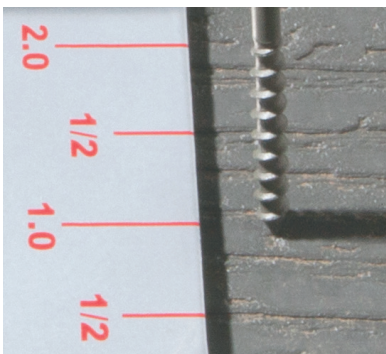
# Space It Right. **First Time - Every Time.**

## DECK SPACER PRO™ 5.5

Patent Pending

### The Right Tool For Your Deck Project

- **Easy to Use:** Saves Time and Money
- **Accurate** 1/8" - 3/16" Spacing every time.
- For 5 1/2" Square Edge Composite Deck Boards
- **All Major Brands** measuring 5 1/2" +/- wide
- Also works on 5 1/2" conventional 2x6"



- **FAST & ACCURATE**  
**Save Time.** Deck Spacer Pro™ gives you Inch and Centimeter rules for pre-drill or fastener placement. **Fast & Easy.**
- **PUSH or PULL | EASY TO USE**  
**1/8" THICK Steel.** No fumbling with 16 penny nails, shims or spacers. **Push** for 1/8" spacing or **Pull** for 3/16" spacing. Deck Spacer Pro™ Slides easily across your planks.
- **PRIVATE LABEL & YOUR BRAND Custom Colors Available**

**Contact us today: 530-261-2229**

DeckSpacerPro@gmail.com

**DeckSpacerPro.Com**  
Patent Pending

