



Certificate of Analysis

Powered by Confident Cannabis

NectarTek, LLC

Las Vegas, NV 89149
 susie@nectartek.com
 (702) 797-5421
 Lic. #32-202115H

Sample: 2102DBL0235.1780

METRC Sample:
 Lot #: RDI021621.L

Strain: N/A
 Ordered: 02/18/2021; Sampled: 02/18/2021; Completed: 02/26/2021

RDI021621.L

Concentrates & Extracts, Crystalline Solid



Pesticides



Microbials



Mycotoxins



Heavy Metals



Foreign Matter



Solvents

Terpenes

Analyzed by 300.13 GC/FID and GC/MS



Compound	LOQ	Mass	Mass	Relative Concentration
	%	%	mg/g	
α-Pinene	0.008	0.826	8.26	
β-Caryophyllene	0.008	0.552	5.52	
δ-Limonene	0.008	0.197	1.97	
β-Myrcene	0.008	0.195	1.95	
Terpinolene	0.008	0.182	1.82	
Linalool	0.008	0.123	1.23	
β-Pinene	0.008	0.018	0.18	
α-Humulene	0.008	0.012	0.12	
Camphene	0.008	0.008	0.08	
α-Bisabolol	0.008	<LOQ	<LOQ	
α-Terpinene	0.008	<LOQ	<LOQ	
Caryophyllene Oxide	0.008	<LOQ	<LOQ	
cis-Nerolidol	0.005	<LOQ	<LOQ	
cis-Ocimene	0.005	<LOQ	<LOQ	
δ-3-Carene	0.008	<LOQ	<LOQ	
Eucalyptol	0.008	<LOQ	<LOQ	
γ-Terpinene	0.008	<LOQ	<LOQ	
Geraniol	0.008	<LOQ	<LOQ	
Guaiol	0.008	<LOQ	<LOQ	
Isopulegol	0.008	<LOQ	<LOQ	
p-Cymene	0.008	<LOQ	<LOQ	
trans-Nerolidol	0.003	<LOQ	<LOQ	
trans-Ocimene	0.003	<LOQ	<LOQ	

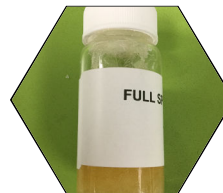
Cannabinoid Relative Concentration

Analyzed by 300.18 UHPLC/PDA



Compound	LOQ	Mass	Mass	Relative Concentration
	%	%	mg/g	
CBC	0.036	0.180	1.80	
CBCa	0.036	<LOQ	<LOQ	
CBD	0.036	94.578	945.78	
CBDa	0.036	<LOQ	<LOQ	
CBDV	0.036	0.205	2.05	
CBDVa	0.036	<LOQ	<LOQ	
CBG	0.036	1.220	12.20	
CBGa	0.036	<LOQ	<LOQ	
CBL	0.036	<LOQ	<LOQ	
CBN	0.036	0.577	5.77	
Δ8-THC	0.036	<LOQ	<LOQ	
Δ9-THC	0.036	0.236	2.36	
THCa	0.036	<LOQ	<LOQ	
THCV	0.036	<LOQ	<LOQ	
THCVa	0.036	<LOQ	<LOQ	

Total THC = 0.877 x THC-A + Δ9-THC + Δ8-THC; Total CBD = CBDa * 0.877 + CBD
 The 0.1% Pass criteria for the THC and Δ9-THC level is set by Nectartek.



Ben Chew

Ben Chew
 Laboratory Director

Glen Marquez

Glen Marquez
 Quality Control



4439 Polaris Ave
 Las Vegas, NV
 (702) 728-5180

www.dblabslv.com

This report is considered highly confidential and the sole property of the customer. DB Labs will not discuss any part of this study with personnel other than those authorized by the client. The results described in this report only apply to the samples analyzed. The reported result is based on a sample weight with the applicable moisture content for that sample. LOQ = Limit of Quantitation. Pesticide LOQ = Instrument Limit of Quantitation, NA = Not Analyzed, ND = Not Detected, NR = Not Reported, NT = Not Tested. PGR = Plant Growth Regulator. Unless otherwise stated all quality control samples performed within specifications established by the Laboratory. This product has been tested by DB Labs, LLC (MME# 61887736101164525768) using valid testing methodologies and a quality system as required by Nevada state law. Edibles are picked up prior to final packaging unless otherwise stated. Values reported relate only to the product tested. The uncertainty of measurement associated with the measurement result reported in this certificate is available from the organization upon request. DB Labs makes no claims as to the efficacy, safety or other risks associated with any detected or non-detected levels of any compounds reported herein. This Certificate shall not be reproduced except in full, without the written approval of DB Labs.



Certificate of Analysis

Powered by Confident Cannabis

NectarTek, LLC

Las Vegas, NV 89149
 susie@nectartek.com
 (702) 797-5421
 Lic. #32-202115H

Sample: 2102DBL0235.1780

METRC Sample:
 Lot #: RDI021621.L

Strain: N/A
 Ordered: 02/18/2021; Sampled: 02/18/2021; Completed: 02/26/2021

RDI021621.L

Concentrates & Extracts, Crystalline Solid



Pesticides

Analyzed by 300.9 LC/MS/MS and GC/MS/MS

Pass

Compound	LOQ	Limit	Mass	Status
	PPB	PPB	PPB	
Abamectin	10	200	<LOQ	Pass
Acequinocyl	10	4000	<LOQ	Pass
Bifenazate	10	400	<LOQ	Pass
Bifenthrin	10	100	<LOQ	Pass
Cyfluthrin	10	2000	<LOQ	Pass
Cypermethrin	10	1000	<LOQ	Pass
Daminozide	10	800	<LOQ	Pass
Dimethomorph	10	2000	<LOQ	Pass
Etoxazole	10	400	<LOQ	Pass
Fenhexamid	10	1000	<LOQ	Pass
Flonicamid	10	1000	<LOQ	Pass
Fludioxonil	10	500	<LOQ	Pass
Imidacloprid	10	500	<LOQ	Pass
Myclobutanil	10	400	<LOQ	Pass
Pacllobutrazol	10	400	<LOQ	Pass
Piperonyl Butoxide	10	3000	<LOQ	Pass
Pyrethrins	10	2000	<LOQ	Pass
Quintozene	10	800	<LOQ	Pass
Spinetoram	10	1000	<LOQ	Pass
Spinosad	10	1000	<LOQ	Pass
Spirotetramat	10	1000	<LOQ	Pass
Thiamethoxam	10	400	<LOQ	Pass
Trifloxystrobin	10	1000	<LOQ	Pass
Plant Growth Regulators	10	50	<LOQ	Pass

Microbials

Analyzed by 300.1 Plating/QPCR

Pass

Quantitative Analysis	LOQ	Limit	Mass	Status
	CFU/g	CFU/g	CFU/g	
Bile-Tolerant Gram-Negative Bacteria	9	100	<LOQ	Pass
Yeast & Mold	90	1000	<LOQ	Pass

Qualitative Analysis	Detected or Not Detected	Status
Aspergillus	Not Detected	Pass
E. Coli	Not Detected	Pass
Salmonella	Not Detected	Pass

Mycotoxins

Analyzed by 300.2 Elisa

Pass

Mycotoxin	LOQ	Limit	Mass	Status
	PPB	PPB	PPB	
Aflatoxins	4.0	20.0	6.1	Pass
Ochratoxin A	2.0	20.0	3.6	Pass

Heavy Metals

Analyzed by 300.8 ICP/MS

Pass

Element	LOQ	Limit	Mass	Status
	PPB	PPB	PPB	
Arsenic	45	2000	<LOQ	Pass
Cadmium	45	820	<LOQ	Pass
Lead	45	1200	<LOQ	Pass
Mercury	45	400	<LOQ	Pass

Residual Solvents

Analyzed by 300.13 GC/FID and GC/MS

Pass

Compound	LOQ	Limit	Mass	Status
	PPM	PPM	PPM	
Butanes	52	500	<LOQ	Pass
Ethanol	52		<LOQ	Tested
Heptanes	52	500	<LOQ	Pass
Propane	52	500	<LOQ	Pass



Ben Chew

Ben Chew
 Laboratory Director

Glen Marquez

Glen Marquez
 Quality Control



4439 Polaris Ave
 Las Vegas, NV
 (702) 728-5180
 www.dblabslv.com

This report is considered highly confidential and the sole property of the customer. DB Labs will not discuss any part of this study with personnel other than those authorized by the client. The results described in this report only apply to the samples analyzed. The reported result is based on a sample weight with the applicable moisture content for that sample. LOQ = Limit of Quantitation. Pesticide LOQ = Instrument Limit of Quantitation. NA = Not Analyzed. ND = Not Detected. NR = Not Reported. NT = Not Tested. PGR = Plant Growth Regulator. Unless otherwise stated all quality control samples performed within specifications established by the Laboratory. This product has been tested by DB Labs, LLC (MME# 61887736101164525768) using valid testing methodologies and a quality system as required by Nevada state law. Edibles are picked up prior to final packaging unless otherwise stated. Values reported relate only to the product tested. The uncertainty of measurement associated with the measurement result reported in this certificate is available from the organization upon request. DB Labs makes no claims as to the efficacy, safety or other risks associated with any detected or non-detected levels of any compounds reported herein. This Certificate shall not be reproduced except in full, without the written approval of DB Labs.