

5-Year
Warranty

Proudly Made in
the U.S.A.



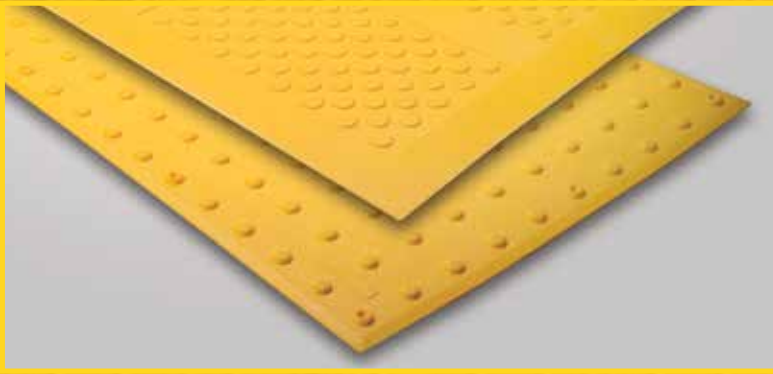
ADA SOLUTIONS, INC.
DETECTABLE WARNING SURFACES
FOR PEDESTRIAN CROSSINGS

SURFACE MOUNT TACTILE



Service, Delivery and Price
Make ADA Solutions, Inc. the Obvious Choice

WWW.ADATILE.COM • 800-372-0519



SURFACE MOUNT TACTILE

**Proudly Made in
the U.S.A.**



In stock colors

White
37875



Brick Red
20109



Yellow
33538



Blue
15187



Safety Red
31350



Seattle Yellow
23594



Black
37038



Dark Gray
36081



Clay Red
22144



ONS INC
.COM

SURFACE MOUNT COMPOSITE TACTILE

Installation Procedure

Be sure to read and understand all of these instructions before you begin.

- A.** The installation area should be cleaned of all debris, oil and grease, making sure the area is completely free of moisture. Tactile Panel may be surface mounted on existing pre-cleaned substrate.
- B.** Lay out the Tactile Panel on the substrate as it will appear when installed.
 - If required, the Tactile Panel may be cut using a table saw and carbide tipped blade. See web site for more details.
- C.** Place a 3/8" bead of adhesive on the frame of the bottom of each Tactile Panel. Adhesive yield: 10SF per 10 ounce cartridge.
- D.** Set the Tactile Panel in the installation area. Make all necessary adjustments prior to fastening.
- E.** Fasteners shall be installed in pre-formed fastener locations. Holes shall be drilled using a hammer drill with 1/4" x 2" min SDS bits. The drilled holes must be a minimum of 2" deep. Place fasteners in hole and hammer into place.
 - If additional fasteners are required, use a 1/2", six point, 82 degree countersink to add a new fastener location. Follow the same drilling method for installing the fastener.
- F.** Caulk around perimeter of entire installation using BASF NP1 or equivalent.
 - All concrete dust present on the Tactile Panel resulting from the drilling process must be cleaned off of the Tactile Panel prior to using any caulking materials.



*Not recommended or warranted for asphalt installation.

*View additional photos, drawings and specifications
on our website: www.adatale.com.
Call (800) 372-0519 with any questions.*

PRODUCT SIZES
2'x3' 2'x4' 2'x5'
3'x4' 3'x5'

APPLICATION
Existing
Concrete Ramps

SURFACE MOUNT COMPOSITE TACTILE

Inline Dome Pattern

DOMES GEOMETRY

In accordance with ADA Regulations for Detectable Warning on Curb Ramps: Raised truncated domes with a diameter of nominal 0.9", a height of nominal 0.2", and a center-to-center spacing of nominal 1.67" minimum and 2.35" maximum.

PANEL DIMENSIONS

Tactile Panels are available in 24"x36", 24"x48", 24"x60", 36"x48" and 36"x60" sizes and measure 3/16" thick. Panels can be custom cut to fit field conditions. All four edges of each panel have a 1/2" beveled edge. Each panel has 12 to 24 pre-formed fastener locations based upon panel size.



MATERIAL

A durable exterior grade homogenous glass, carbon, and fiberglass reinforced composite material which is colorfast and UV stable. The color of the Tactile Unit is uniform throughout and does not rely on any type of paint coating to achieve color stability. Standard colors include: Federal Yellow, Seattle Yellow, White, Brick Red, Clay Red, Safety Red, Blue, Dark Gray and Black. For superior wheelchair, walker and shopping cart mobility, truncated domes have a center-to-center (horizontally and vertically) spacing of 2.35 inches.

PHYSICAL CHARACTERISTICS

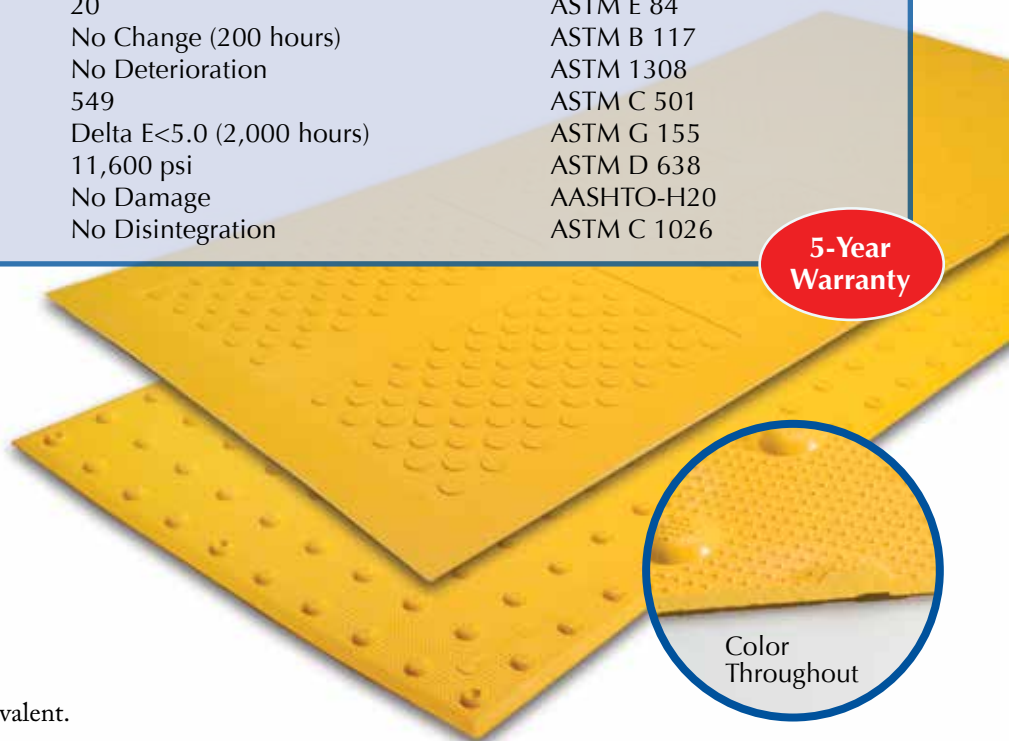
Compressive Strength	28,900 psi	ASTM D 695
Flexural Strength	29,300 psi	ASTM D 790
Water Absorption	.07%	ASTM D 570
Slip Resistance	1.18 Dry, 1.05 Wet	ASTM C 1028
Flame Spread Index	20	ASTM E 84
Salt Spray	No Change (200 hours)	ASTM B 117
Chemical Stain Testing	No Deterioration	ASTM 1308
Abrasion Resistance	549	ASTM C 501
Accelerated Weathering	Delta E<5.0 (2,000 hours)	ASTM G 155
Tensile Strength	11,600 psi	ASTM D 638
Load Bearing at 16,000 lbs.	No Damage	AASHTO-H20
Freeze/Thaw/Heat	No Disintegration	ASTM C 1026

INSTALLATION

ADA Surface Applied TWS Panel (Existing Concrete): TWS panel can be easily installed (adhered, fastened & sealed) in a matter of minutes.

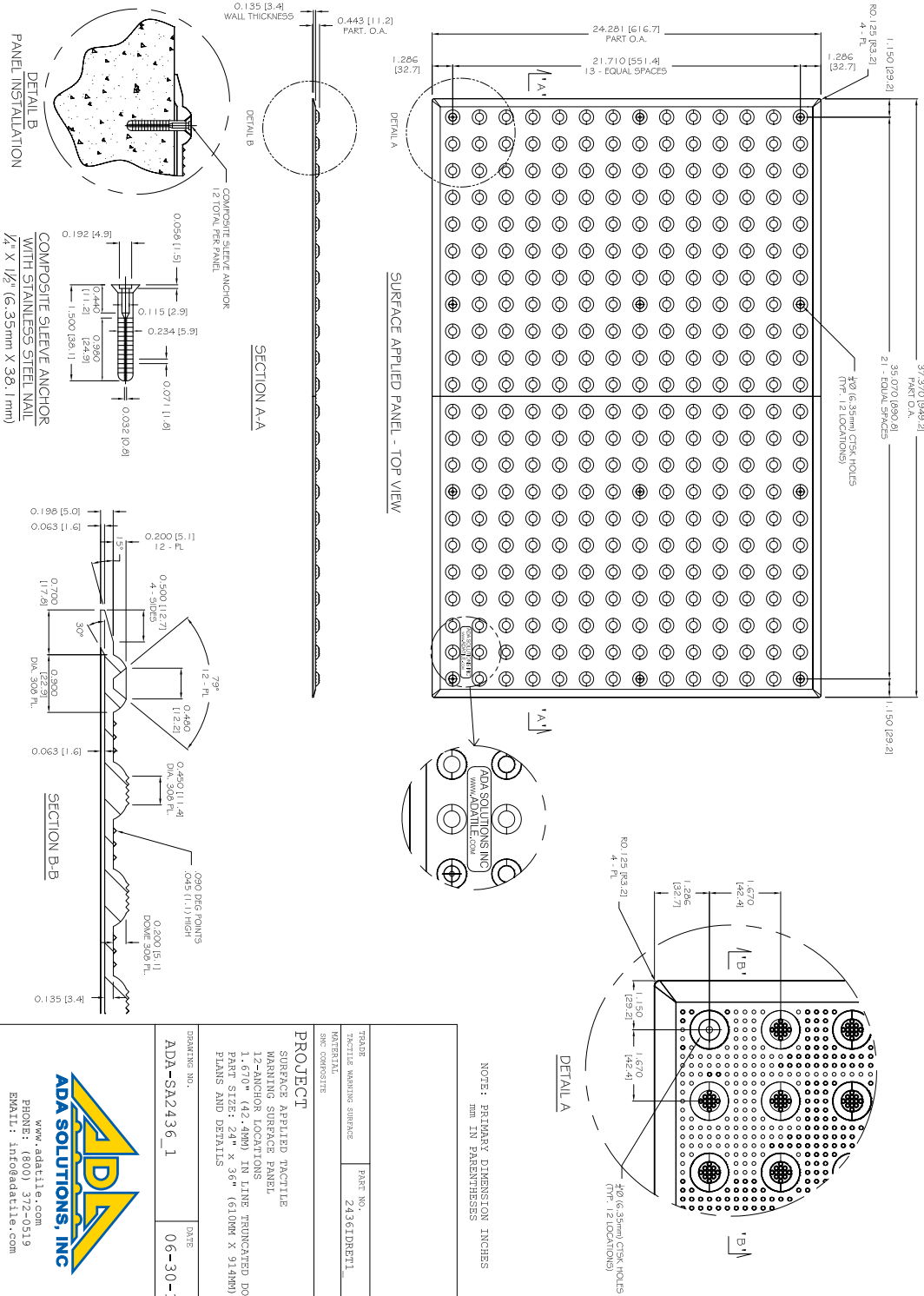
INCIDENTALS

- Fasteners:** 1/4" x 1 5/8", composite sleeve anchor with stainless steel pins.
- Adhesive:** One component structural elastomeric adhesive.
- Sealant:** BASF NP1, Sikaflex 1A, or equivalent.



SURFACE MOUNT COMPOSITE TACTILE

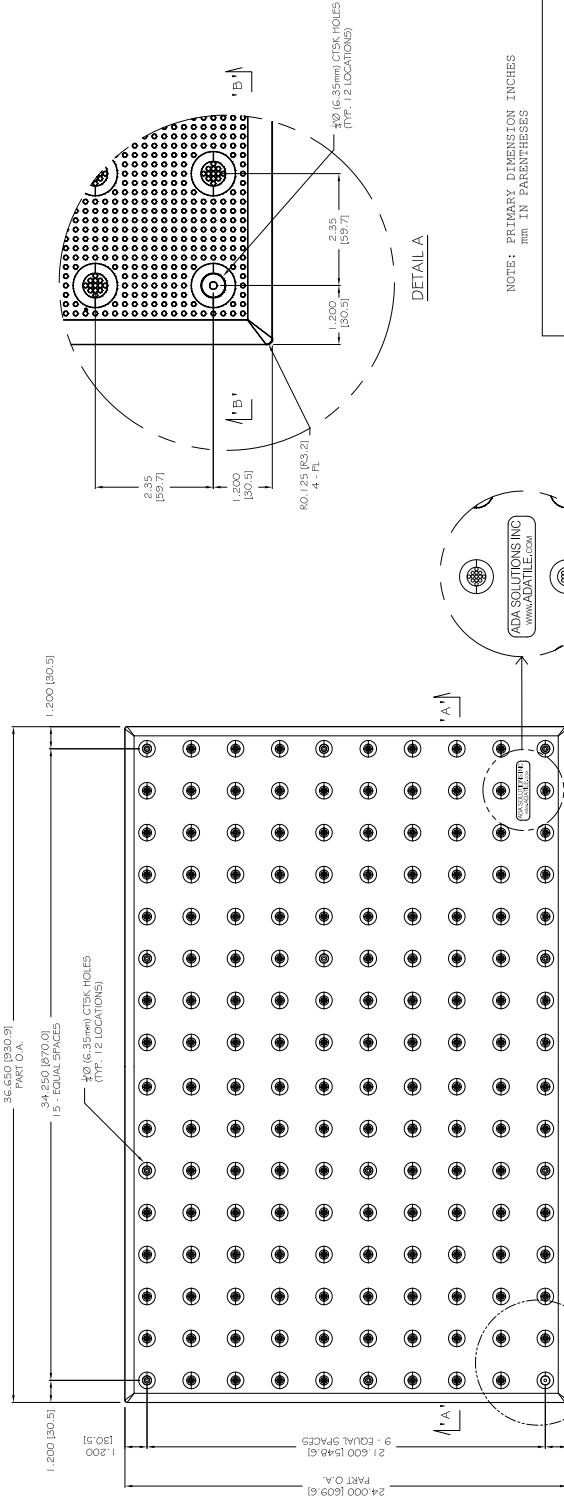
24" x 36" (610 x 914mm) Tile
1.67" (42.4 mm) Dome Spacing



NOTE: PRIMARY DIMENSION INCHES
MM IN PARENTHESES

SURFACE MOUNT COMPOSITE TACTILE

24" x 36" (610 x 914mm) Tile
2.35" (59.7 mm) Dome Spacing



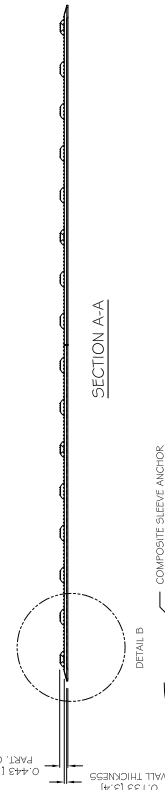
DETAIL A

NOTE: PRIMARY DIMENSION INCHES
mm IN PARENTHESES

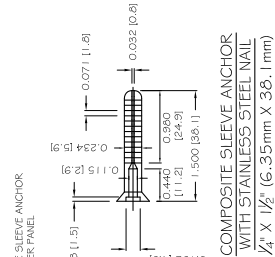
TRADE TACTILE WARNING SURFACE	PART NO. 2436TDRET2
MATERIAL SMC COMPOSITE	
PROJECT SURFACE APPLIED TACTILE WARNING SURFACE PANEL 12-ANCHOR LOCATIONS 2.35" (59.7MM) IN LINE TRUNCATED DOME PART SIZE: 24" x 36" (610MM X 914MM) PLANS AND DETAILS	
DRAWING NO. ADA-SA2436_2	DATE 06-30-13



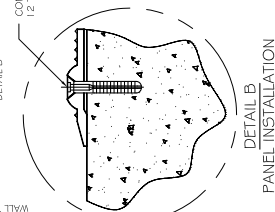
SURFACE APPLIED PANEL - TOP VIEW



SECTION A-A

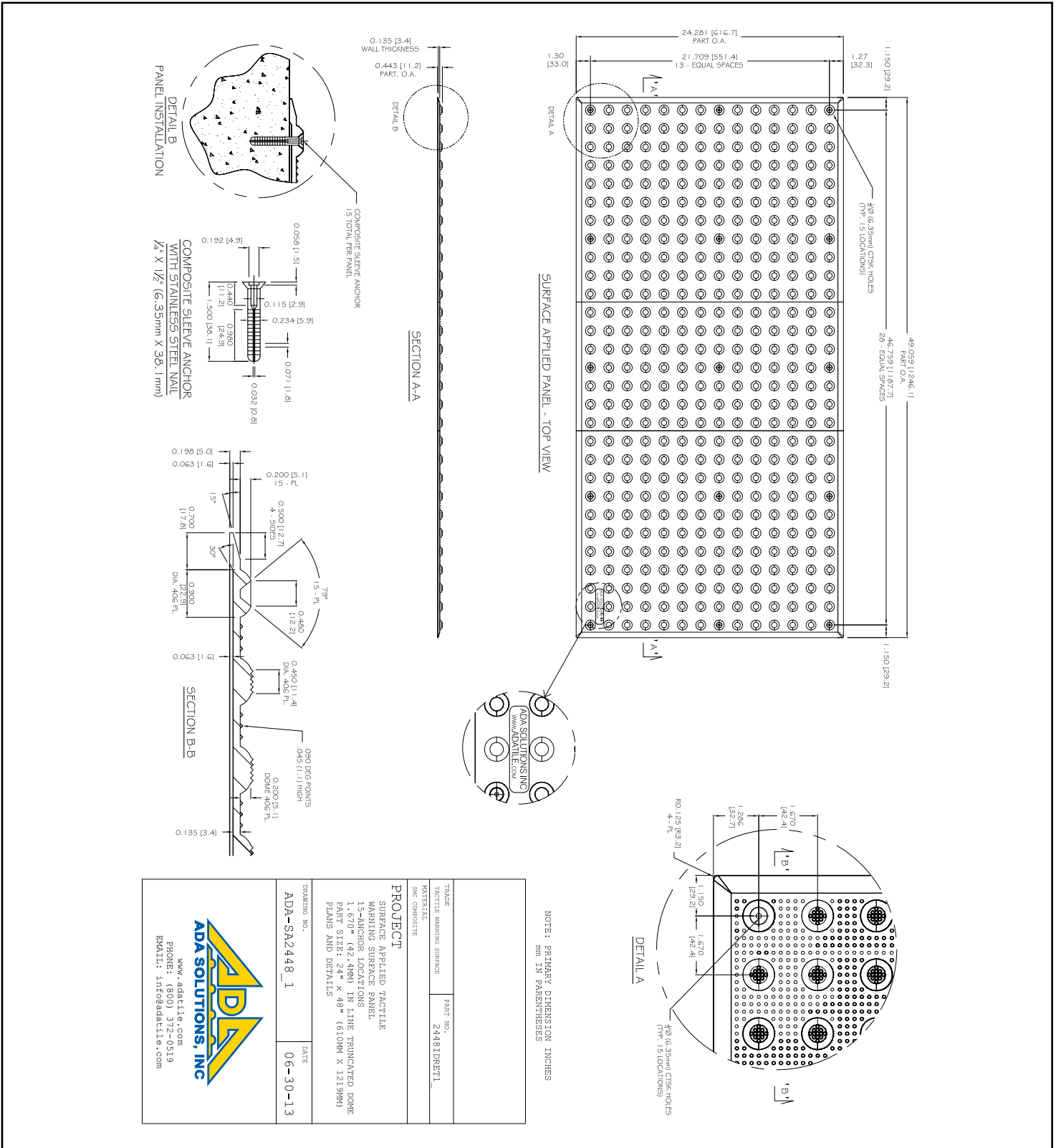


SECTION B-B



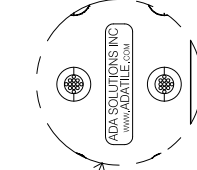
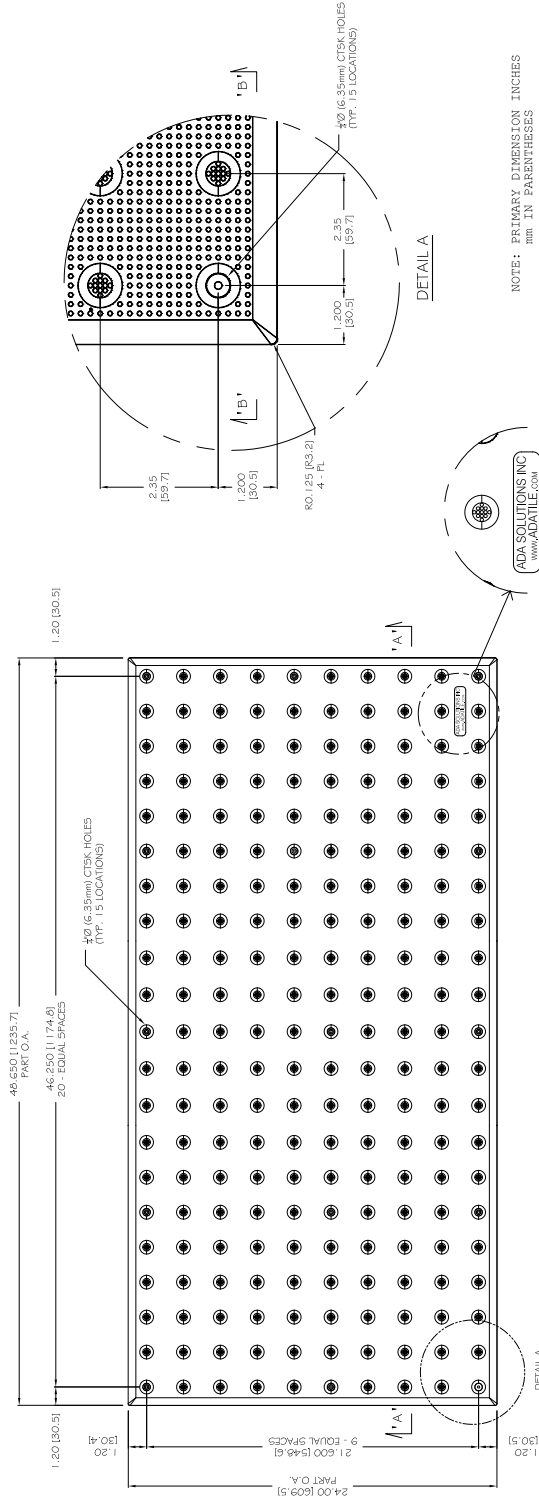
SURFACE MOUNT COMPOSITE TACTILE

24" x 48" (610 x 1219mm) Tile
1.67" (42.4 mm) Dome Spacing



SURFACE MOUNT COMPOSITE TACTILE

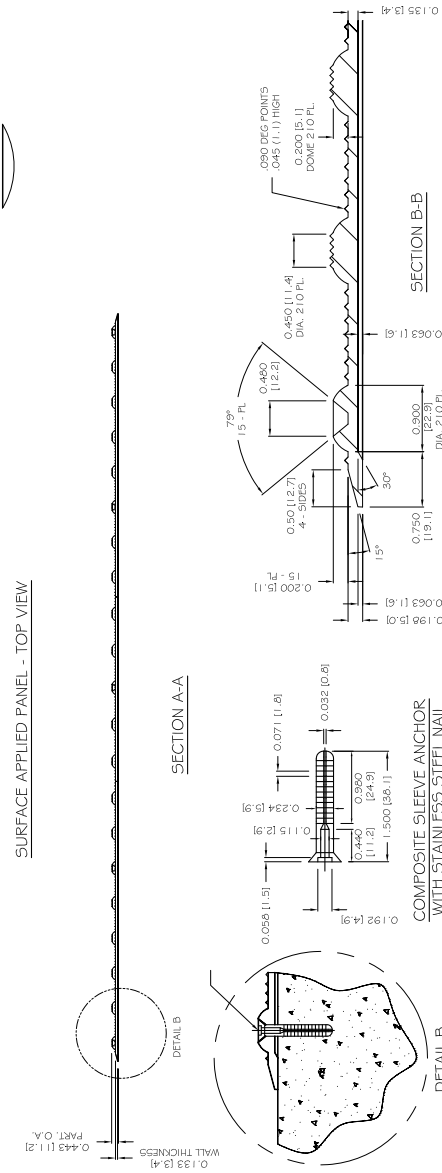
24" x 48" (610 x 1219mm) Tile
2.35" (59.7 mm) Dome Spacing



NOTE: PRIMARY DIMENSION INCHES
 mm IN PARENTHESES

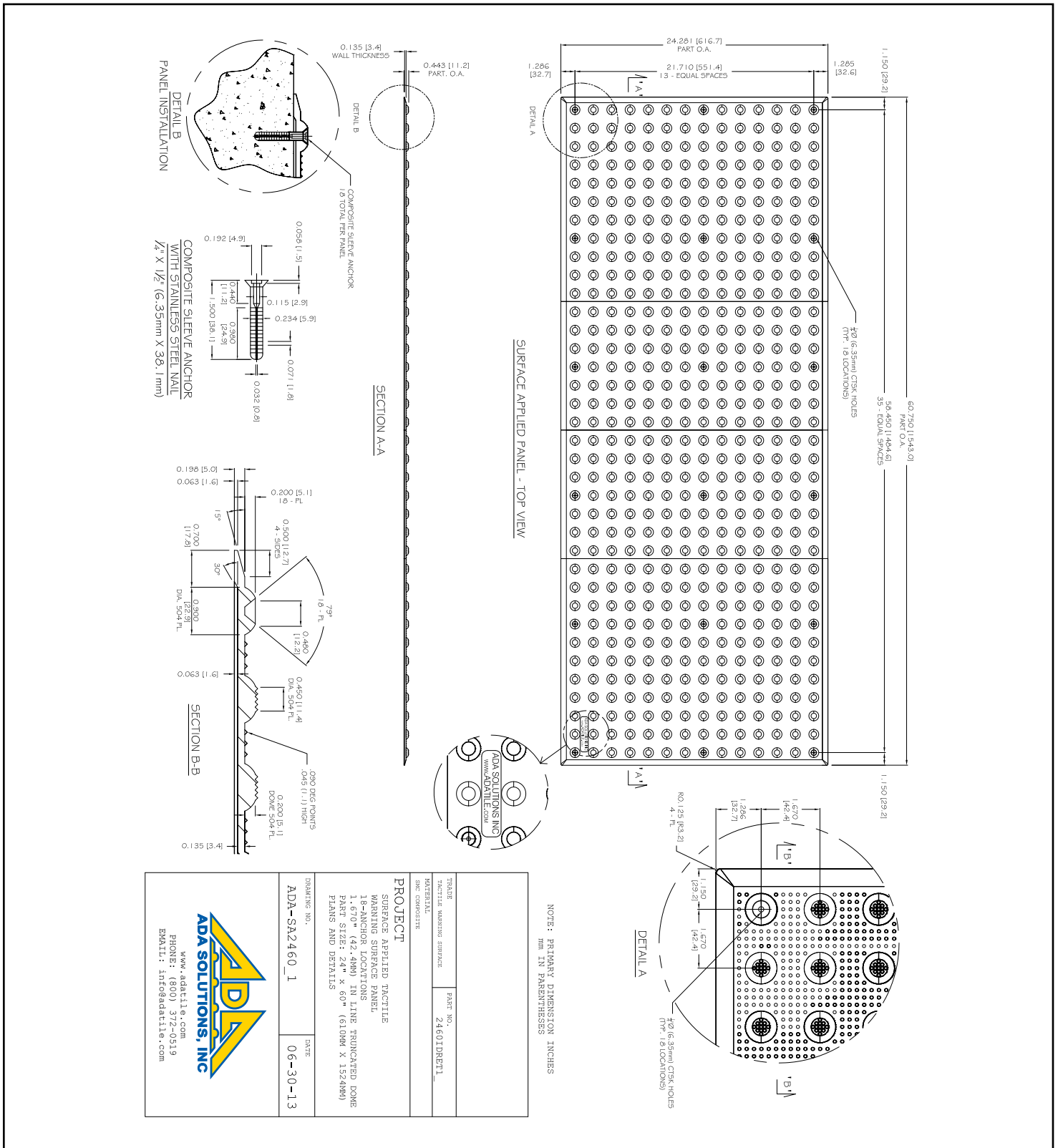
TRADE TACTILE WARNING SURFACE	PART NO. 2448TDRET2
MATERIAL SMC COMPOSITE	
PROJECT SURFACE APPLIED TACTILE WARNING SURFACE PANEL 15-ANCHOR LOCATIONS 2.35" (59.7mm) IN LINE TRUNCATED DOME PART SIZE: 24" x 48" (610mm X 1219mm) FLANS AND DETAILS	
DRAWING NO. ADA-SAZ448_2	DATE 06-30-13
 www.adatile.com PHONE: (800) 372-0519 EMAIL: info@adatile.com	

SURFACE APPLIED PANEL - TOP VIEW




SURFACE MOUNT COMPOSITE TACTILE

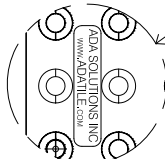
24" x 60" (610 x 1524mm) Tile
 1.67" (42.4 mm) Dome Spacing



NOTE: PRIMARY DIMENSION INCHES
 DIM. IN PARENTHESES

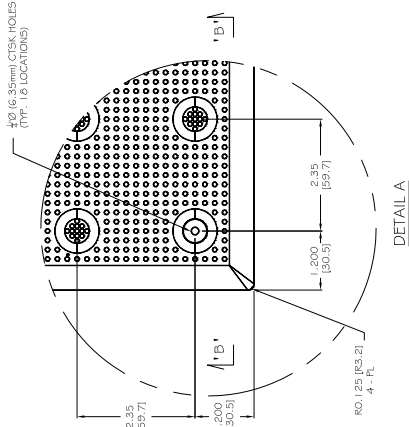
TRADE TACTILE WARNING SURFACE	PART NO. 2460IDRETL
MATERIAL SEC. COMPOSITE	
PROJECT SURFACE APPLIED TACTILE WARNING SURFACE PANEL 18-ANCHOR LOCATIONS 1.670" (42.4MM) IN LINE TRUNCATED DOME PART SIZE: 24" x 60" (610MM X 1524MM) PLANS AND DETAILS	
DRAWING NO. ADA-SA2460_1	DATE 06-30-13


 www.ada-tile.com
 PHONE: (800) 372-0519
 EMAIL: info@adatitle.com



SURFACE MOUNT COMPOSITE TACTILE

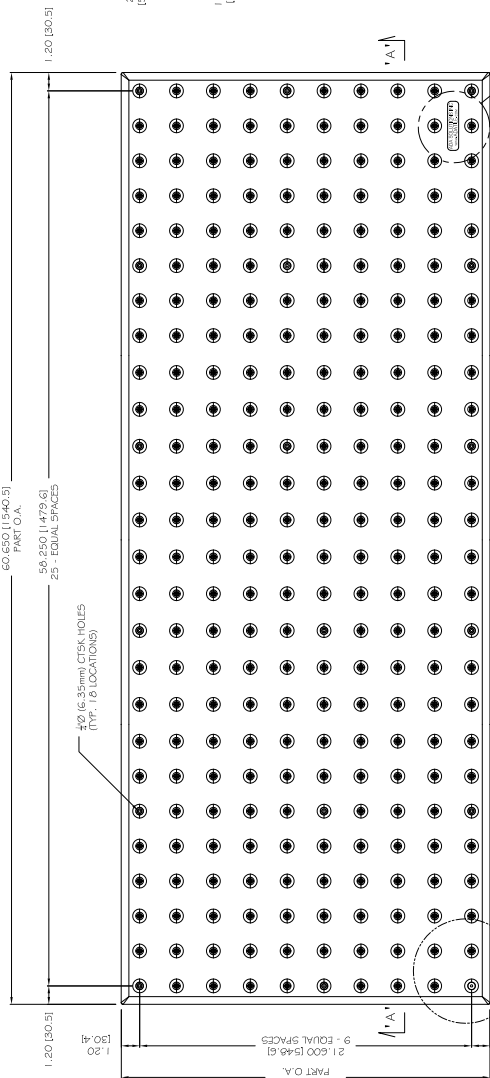
24" x 60" (610 x 1524mm) Tile
2.35" (59.7 mm) Dome Spacing



DETAIL A

NOTE: PRIMARY DIMENSION INCHES
mm IN PARENTHESES

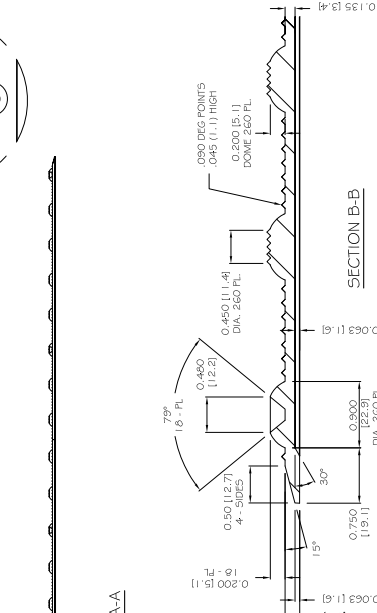
TRAMP TACTILE WARNING SURFACE	PART NO. 2460DRET2	<p>www.adatile.com PHONE: (800) 372-0519 EMAIL: info@adatile.com</p>
MATERIAL SMC COMPOSITE		
PROJECT SURFACE APPLIED TACTILE WARNING SURFACE PANEL 18-ANCHOR LOCATIONS 2.35" (59.7MM) IN LINE TRUNCATED DOME PART SIZE: 24" x 60" (610MM X 1524MM) PLANS AND DETAILS		
DRAWING NO. ADA-SA2460_2	DATE 06-30-13	



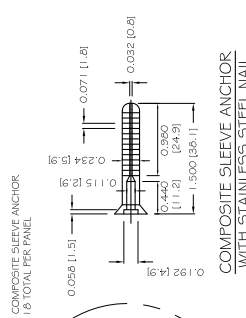
SURFACE APPLIED PANEL - TOP VIEW

DETAIL A

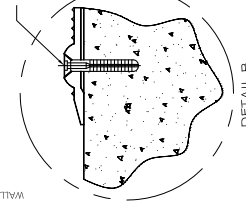
DETAIL B



SECTION A-A



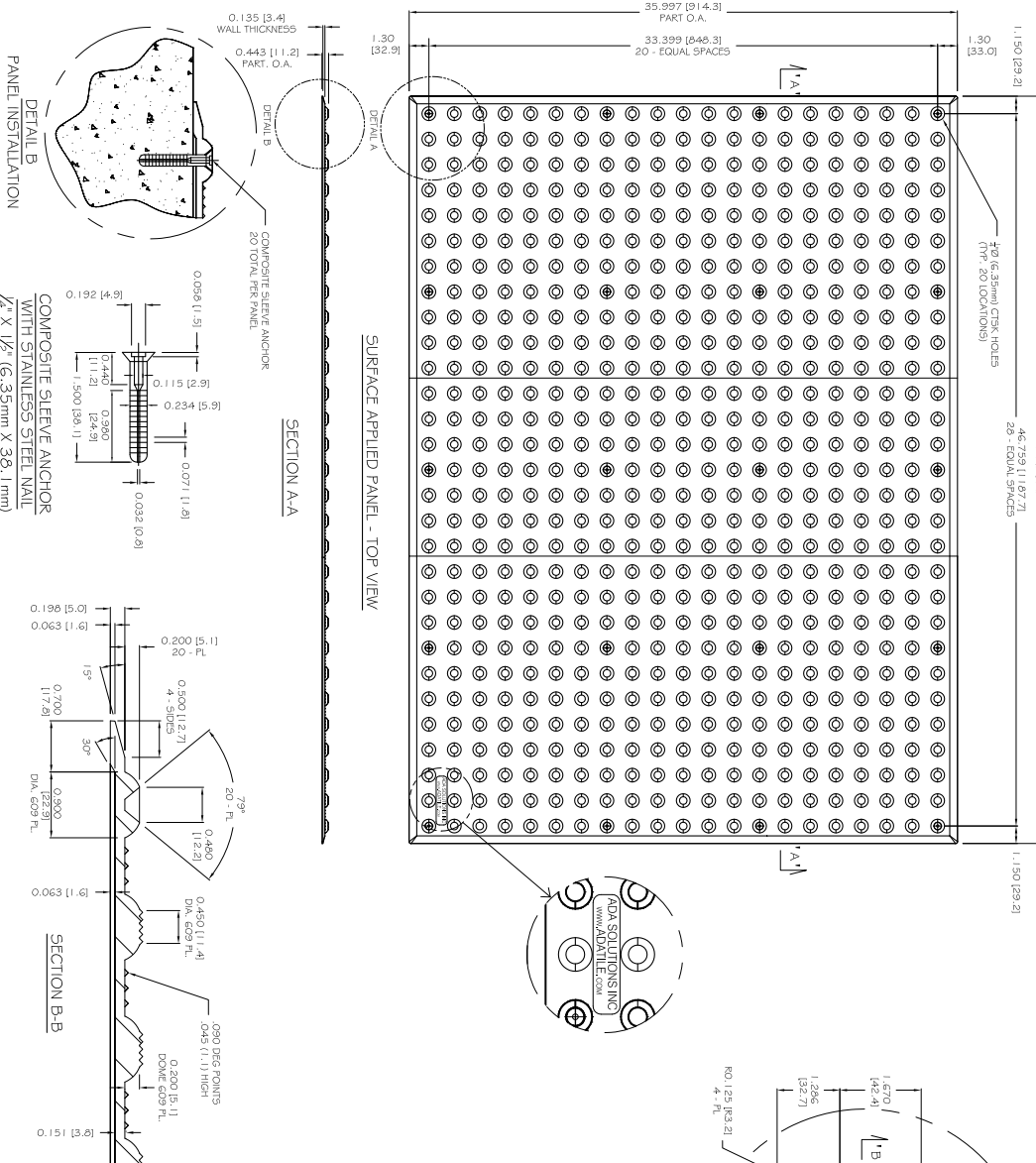
SECTION B-B



DETAIL B
PANEL INSTALLATION


SURFACE MOUNT COMPOSITE TACTILE

36" x 48" (914 x 1219mm) Tile
1.67" (42.4 mm) Dome Spacing



NOTE: PRIMARY DIMENSION INCHES
DIM. IN PARENTHESES

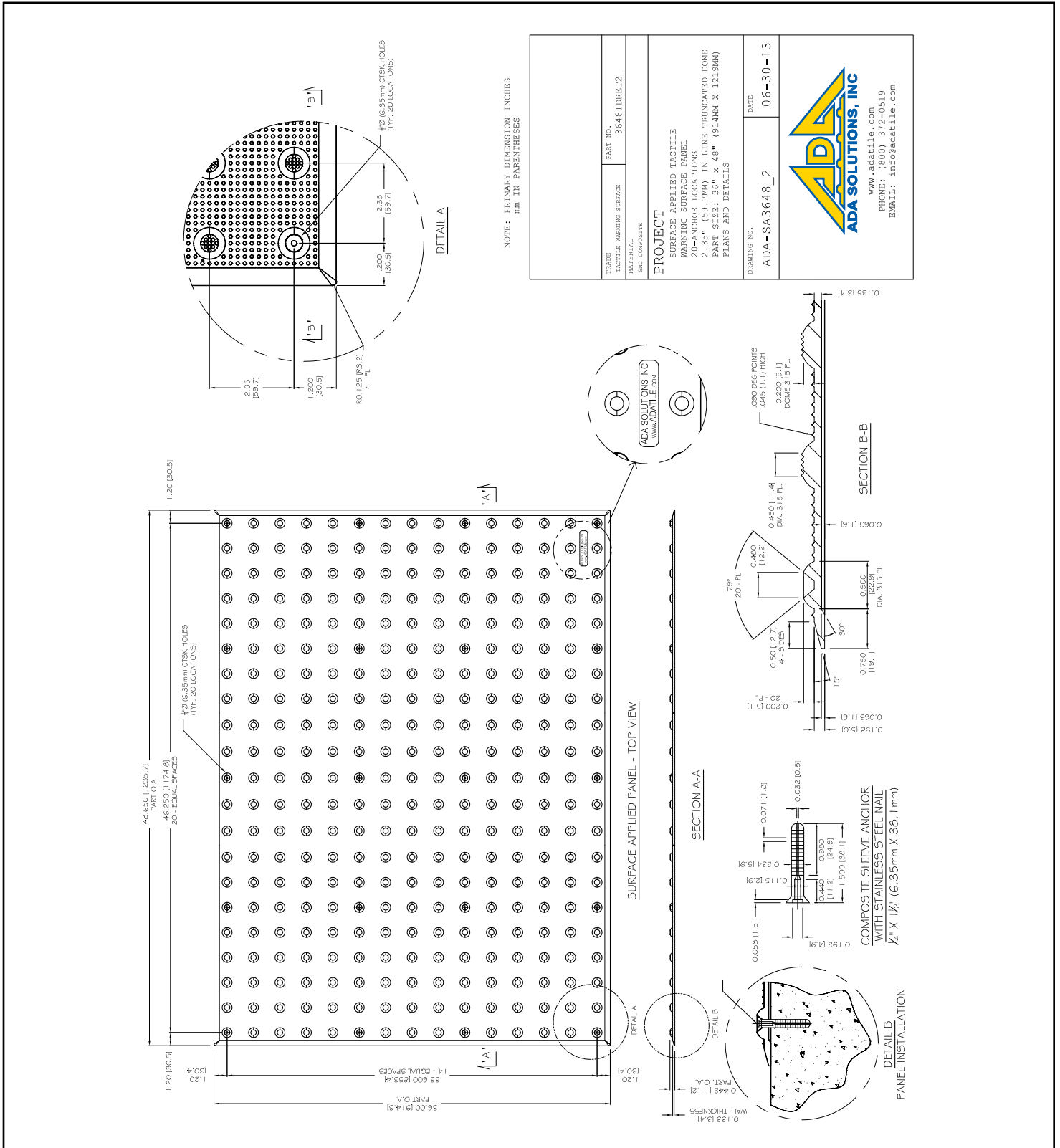
TRADE TACTILE WARNING SURFACE MATERIAL SFC. COMPOSITE	PART NO. 36481DBR1L
PROJECT	
SURFACE APPLIED TACTILE WARNING SURFACE PANEL 20-ANCHOR LOCATIONS 1.670" (42.4mm) IN LINE TRUNCATED DOME PART SIZE: 36" x 48" (914MM X 1219MM) PLANS AND DETAILS	
DRAWING NO. ADA-SA3648_1	DATE 06-30-13



www.ada-tile.com
PHONE: (800) 372-0519
EMAIL: info@adatile.com

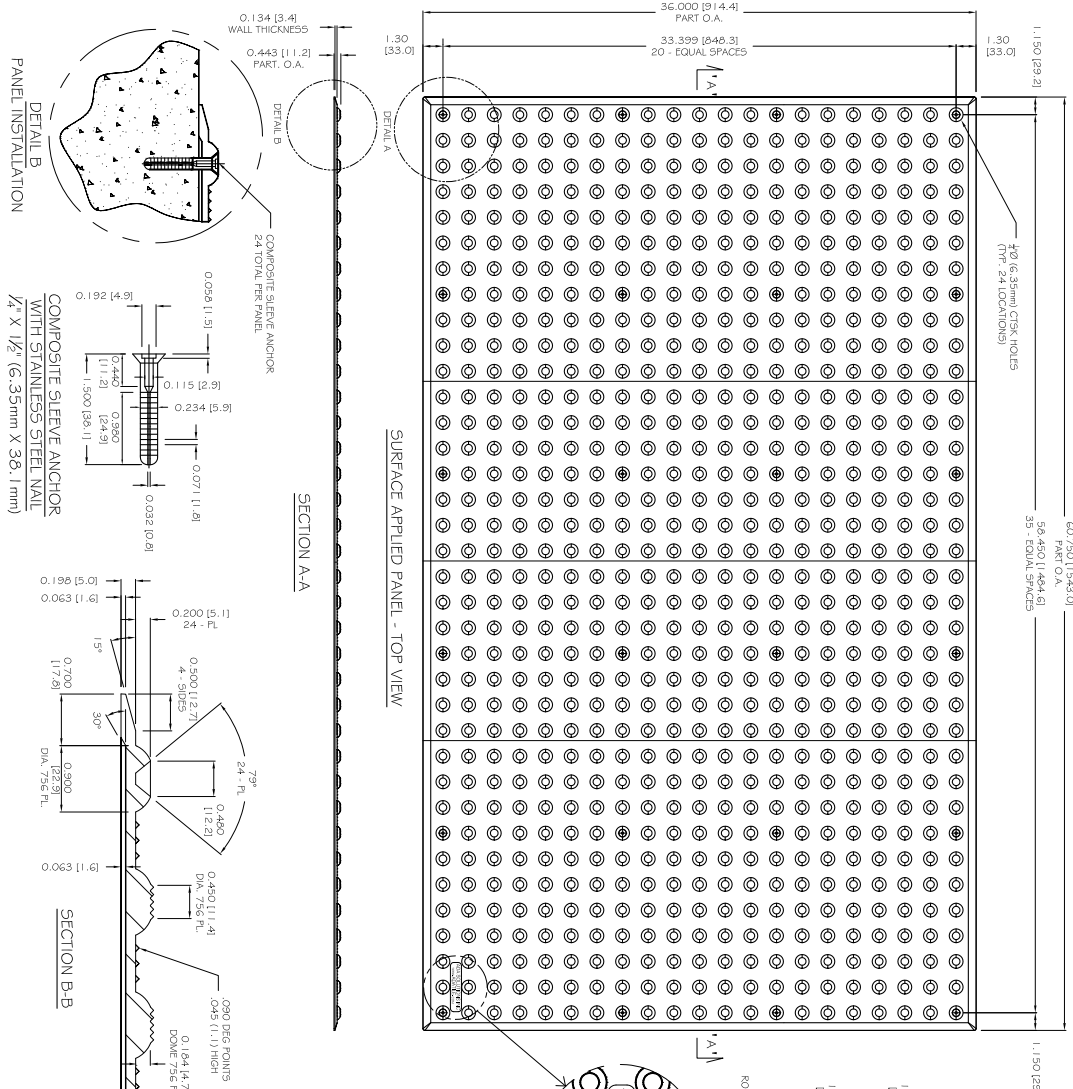
SURFACE MOUNT COMPOSITE TACTILE

36" x 48" (914 x 1219mm) Tile
2.35" (59.7 mm) Dome Spacing



SURFACE MOUNT COMPOSITE TACTILE

36" x 60" (914 x 1524mm) Tile
1.67" (42.4 mm) Dome Spacing



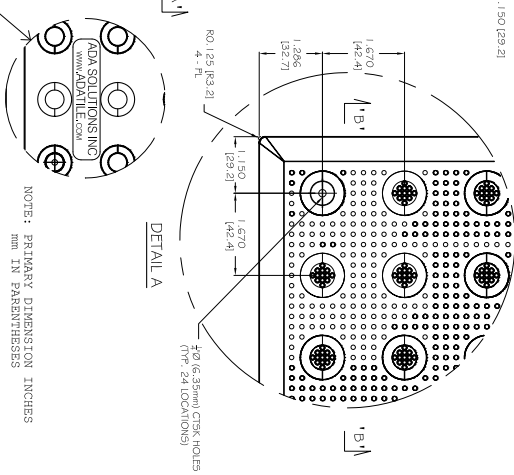
SURFACE APPLIED PANEL - TOP VIEW

SECTION A-A

SECTION B-B

DETAIL B
COMPOSITE SLEEVE ANCHOR WITH STAINLESS STEEL NAIL

COMPOSITE SLEEVE ANCHOR WITH STAINLESS STEEL NAIL
 1/2" x 1/2" (6.35mm x 36.1mm)

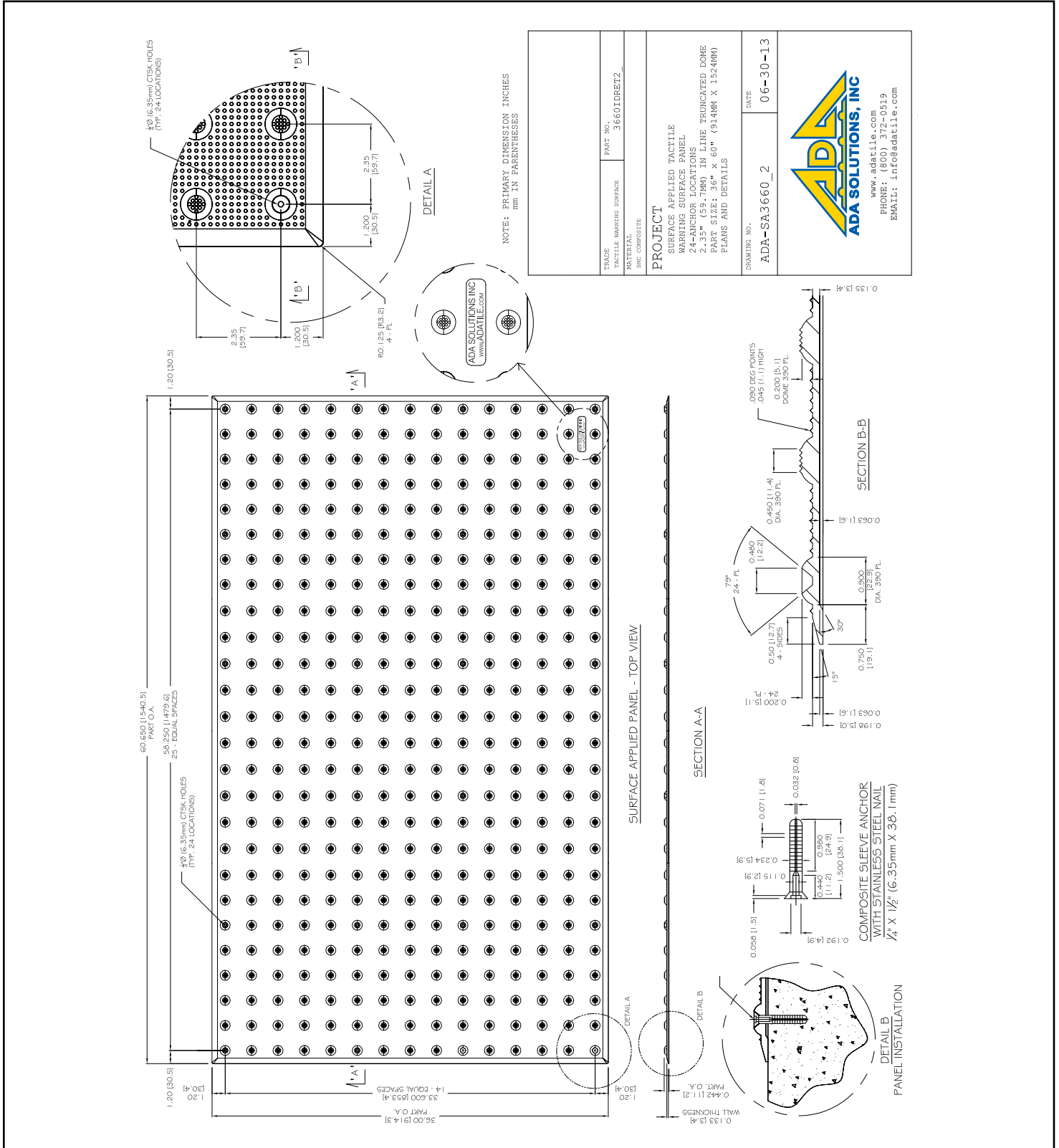


TILE TACTILE WARNING SURFACE		PART NO. 36601DEPT1
MATERIAL SIC COMPOSITE		
PROJECT SURFACE APPLIED TACTILE WARNING SURFACE PANEL 24-ANCHOR LOCATIONS 1.670" (42.4mm) IN LINE TRUNCATED DOME PART SIZE: 36" x 60" (914mm x 1524mm) PLANS AND DETAILS		
DRAWING NO. ADA-SA3660_1	DATE 06-30-13	

www.adatitle.com
 PHONE: (800) 372-0519
 EMAIL: info@adatitle.com

SURFACE MOUNT COMPOSITE TACTILE

36" x 60" (914 x 1524mm) Tile
2.35" (59.7 mm) Dome Spacing





Wherever you go...
There we are™

- INDUSTRY LEADING SERVICE, DELIVERY AND PRICE
- ONE PIECE APPLICATION
- TIME-SAVING INSTALLATION
- CAST-IN-PLACE REPLACEABLE
- RADIUS REPLACEABLE (WET-SET)
- RADIUS SURFACE MOUNT
- SURFACE MOUNT (RETROFIT)
- CAST-IN-PLACE (WET-SET)
- BAR TILE SURFACE MOUNT
- BAR TILE REPLACEABLE (WET-SET)
- GUIDE TILE
- ADAAG COMPLIANT
- UNIFORM COLOR THROUGHOUT

PRODUCT INFORMATION / SUBMITTAL