

An aerial photograph of a speedboat moving across turquoise water, leaving a large, white, foamy wake. The boat is positioned in the upper right quadrant of the frame. The water's color transitions from a deep teal in the center to a lighter, more bubbly turquoise in the wake.

BLUE CAT 16FT

SPECIFICATIONS

Length Overall	-	16'
Beam	-	7'
Draft	-	8"
Dry Weight (Hull)	-	970 lbs
Weight Ready To Fish	-	1,323 lbs
Top Speed	-	42 MPH*
Cruising Speed	-	24 MPH*
Fuel Capacity (STD)	-	25 Gal
Deadrise	-	21°
Recommended Power	-	60 - 115 HP
Range	-	90 Miles

Hull Type	-	Catamaran
Hull Material	-	Carbon Kevlar or Fiberglass
Construction Method	-	Core Infusion Technology
Construction Standard	-	ABS Classification

ENGINE PARTICULARS

Speed numbers provided were as tested
with Mercury 115 Engine



BLUECAT

STANDARD FEATURES

60 HP Mercury Outboard and Rigging

Battery w/ Switch

Power Steering

25 Gal Aluminum Fuel Tank

Hull Color

Rub Rail

Flush Mounted Hatches

Console

Switch Panel

Windshield w/ S.S. Frame

Stainless Steering Wheel

USB Outlet on Console

2 Cup Holders on Console

Helm Seat

Cockpit Lights (Set of 3)

Navigation Lights

Anchor Light

Stern Ladder

D-ring

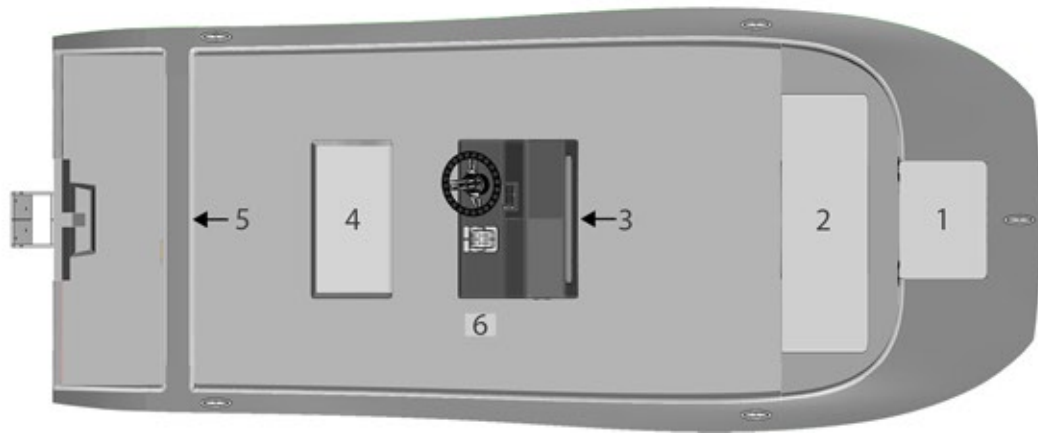
4 Pop-Up Cleats





BOX AND TANK CAPACITY STANDARD

- 1 - Anchor Box
- 2 - Ice Box (Capacity of 20 Gal)
- 3 - Console Access
- 4 - Battery Box Under Leaning Post
- 5 - Utility Access
- 6 - Fuel Tank Inspection Port (Capacity 25 Gal)



BUILDING TECHNOLOGY

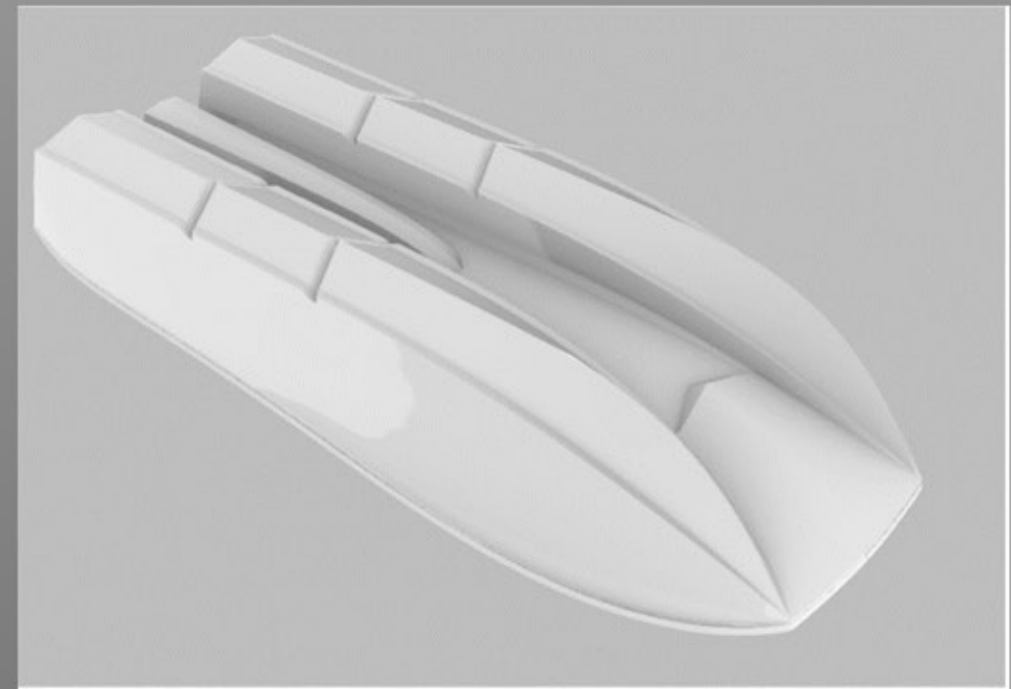
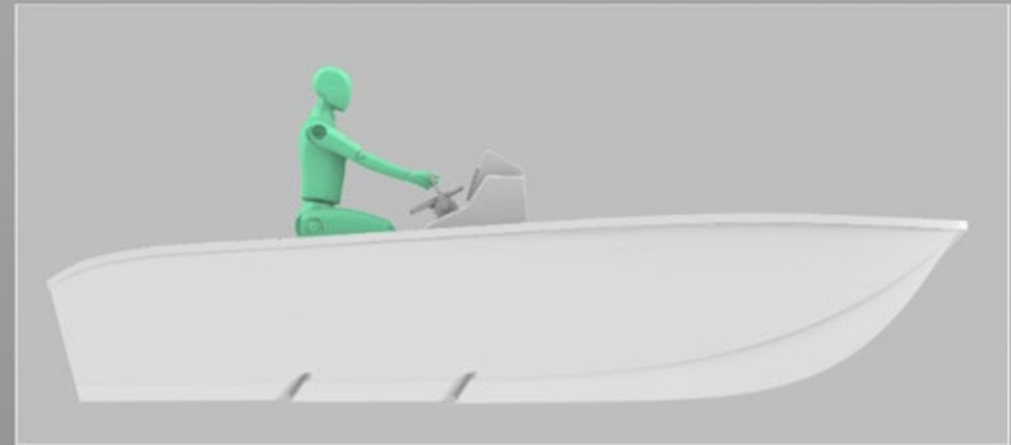
BlueCat utilizes the most advanced materials and technology available on the market for boat building, which makes our boats lighter, stronger, faster and more fuel efficient compared to our competitors. Our process consists of using a special vacuum infusion lamination resulting in higher consistency, increased glass content (higher specific strength and stiffness), a high quality finish, and a faster cycle time.



BLUECAT

STEP HULL DESIGN

Our patented step hull design incorporates two stepped surfaces with a reverse radius chine and spray-rails along the bottom of the hulls. These steps create air pockets that reduce surface tension and improve hydrodynamic lift. As a result, our boat can achieve incredibly high speeds and industry leading fuel efficiency.



Mercury 115 HP Ourboard			
RPM	GPH	MPH	MPG
IDLE	0.304233		
1000	0.555556	7.246377	13.04348
1500	0.899471	10.86957	12.0844
2000	1.375661	14.49275	10.53512
2500	2.195767	18.11594	8.250393
3000	3.280423	21.73913	6.626928
2500	3.730159	18.11594	4.856614
4000	4.68254	28.98551	6.190125
4500	5.952381	32.6087	5.478261
5000	7.248677	36.23188	4.998413
5500	8.730159	39.85507	4.565217
6000	10.60847	43.47826	4.09845

FINAL DESIGN

BLUECAT

BLUECAT

HIGH SPEED PERFORMANCE
COMPACT AND RIGID
SLEEK AND STYLISH

YOUR BOAT

YOUR CHOICE



COLOR CHOICES



OPTIONS


- Carbon Kevlar Hull
- Liner Color
- Stainless Steel Rub Rail
- T-Top
- Fresh Water System
- Minn Kota Trolling Motor
- Power Pole
- Additional 25 Gal. of Fuel
- Jack Plate
- S.S. Hand Bar
- Transom Rod Holders
- Carbon Fiber Cup Holders
- Carbon Fiber Steering Wheel
- SeaDeck Non-Skid
- Flopbox to Bait Cooler
- Boat Cover
- Removeable Cushion Forward
- Underwater Lights
- Electronics
- Sound System
- Trailer



BLUECAT

Disclaimer: This brochure is designed to provide the reader with an introduction to the 30 ft. fishing vessel produced by BlueCat including standard equipment and available options. BlueCat USA LLC reserves the right at any time and without notice, to discontinue or change the features, design, materials, color, specifications and prices of its products.



 SCAN ME

-  **Blue Cat USA**
19100 SW Warfield Blvd.
Indiantown, FL 34956
-  info@bluecatusa.com
-  +1(833) BUY A CAT (289-2228)