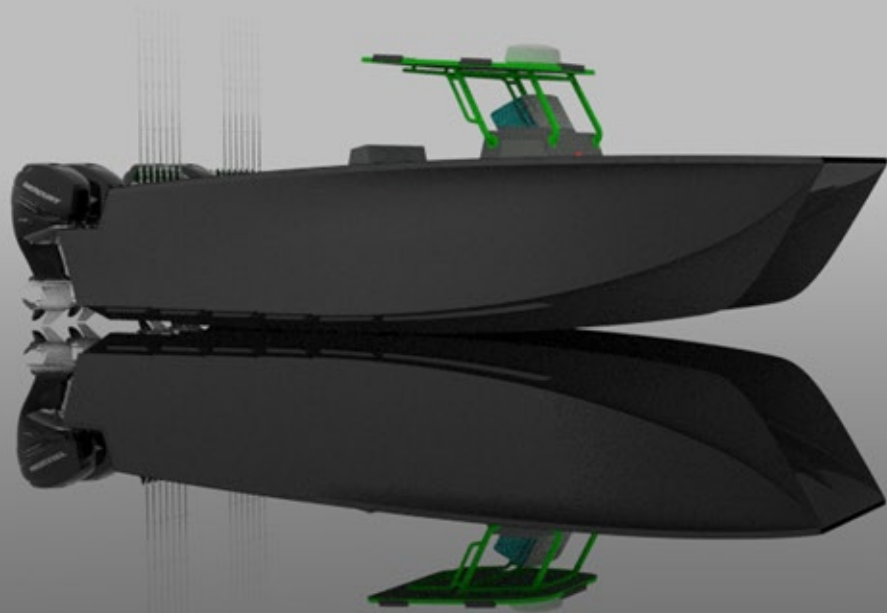
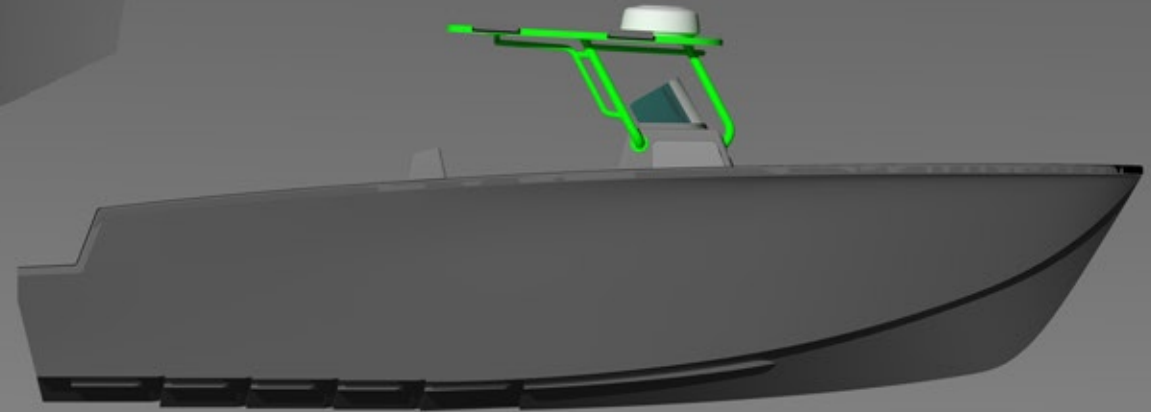


BLUE CAT_{30FT}





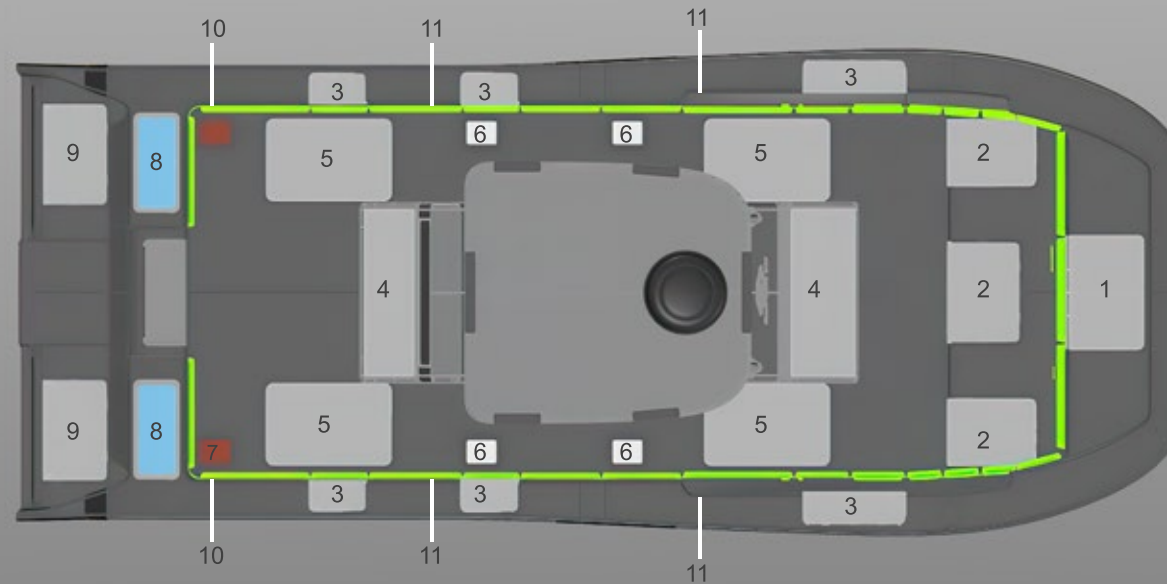
SPECIFICATIONS

Length Overall	-	30'
Beam	-	12' 6"
Draft	-	1' 7"
Dry Weight (Hull)	-	5,500 lbs
Weight Ready To Fish	-	13,220 lbs
Top Speed	-	103 MPH*
Cruising Speed	-	52 MPH*
Fuel Capacity (STD)	-	500 Gal
Fresh Water Capacity	-	100 Gal
Deadrise	-	24°
Recommended Power	-	600 - 1800 HP

Hull Type	-	Catamaran
Hull Material	-	Carbon Kevlar or E- Glass Fabrics PVC Core
Construction Method	-	Core Infusion Technology
Construction Standard	-	ABS Classification

ENGINE PARTICULARS

Speed numbers provided were as tested with Quad Mercury 400R Engines



- 1 - Anchor Box
- 2 - Storage Box
- 3 - Gunwale Box
- 4 - Cooler Box Under Seat
- 5 - Fish Box
- 6 - Fuel Tank Inspection Port
- 7 - Water Inspection Port
- 8 - Live Well
- 9 - Bilge Hatch
- 10 - Utility Box (2* fuel filter ,
Freshwater pump,salt water pump)
- 11 - Side Deck Box

BOX AND TANK CAPACITY STANDARD

Gunwale Box	-	2 x 2 Gal 2 x 6 Gal 2 x 9 Gal
Transom Live Well	-	2 x 50 Gal
Storage Box Forward	-	2 x 42 Gal & 1 x 24 Gal
Fish Box	-	2 x 100 Gal & 2 x 128 Gal
Anchor Box	-	65 Gal
Fuel Tank	-	2 x 235 Gal + 30 Gal Reserve
Fresh Water Tank	-	2 x 50 Gal
Cooler Box Under Seat	-	28 Gal & 40 Gal
Side Deck Box	-	2 x 12 Gal & 2 x 10 Gal

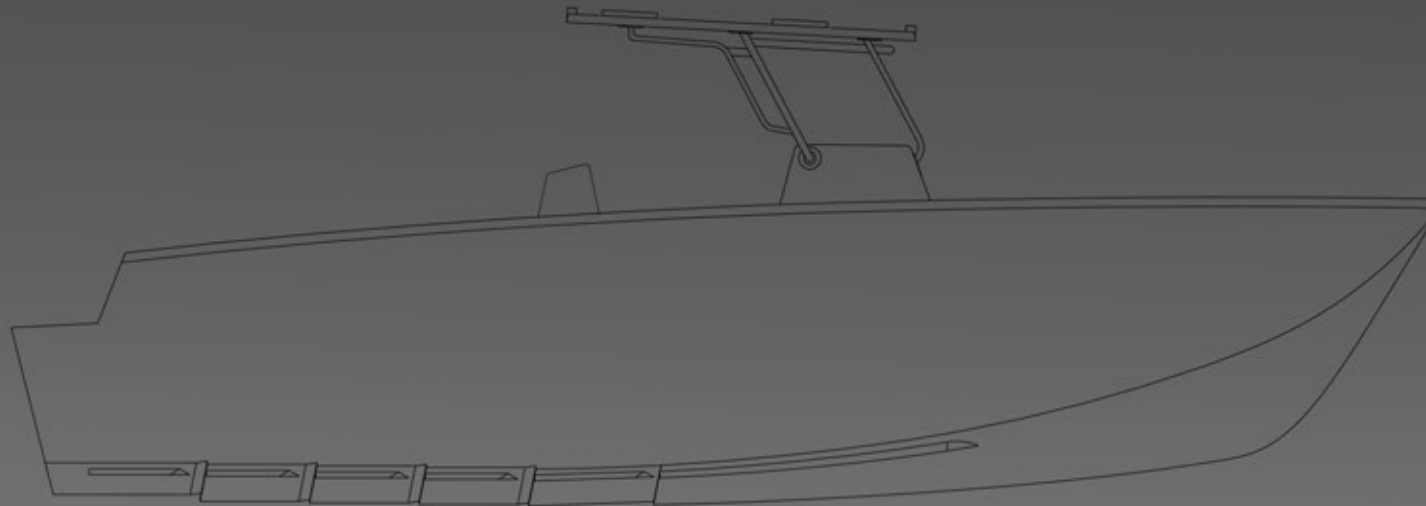
STANDARD FEATURES

- E-Glass (EPOXY) Construction
- Hull Side & Hull Bottom Color
- Center Console With Storage
- Leaning Post With Rear Facing Seat
- 2 x Fuel Fill (PORT & STBD) & 1 Fresh Water Fill
- Fuel And Water Tank Gauges
- Bilge System Plumbing With Transparent PVC Hose
- 2 x Rule Electric Bilge Pumps (2000 GPH)
- Handrail
- Anchor Locker
- 4 x Fishboxes
- 2 x Insulated Cooler Boxes (Under Seat)
- 3 x Storage Boxes
- 6 x Gunwale Boxes
- 2 x 50 Gal Plumbed Livewells
- Livewell System Plumbed With 2 x 1600 GPH Pumps

- Taco Super Flex Rub Rail (Black or White)
- Navigation Lights
- Anchor Light
- High Speed Compass
- 2 x Transom 'D' Ring & 1 x Anchor 'D' Ring
- T-Top (Hardtop)
- 3 x Puck Lghts
- 3 x Spreader Lights
- 4 x Aluminum T-Top Rod Holders
- Windshield
- 2 x Console Glove Boxes
- 7 x Pop-Up Cleats
- Garelick Telescoping Ladder
- 4 x Gunwale Rod Holders
- Power Steering
- Stainless Steel Wheel With Tilt Steering Helm

BUILDING TECHNOLOGY

BlueCat utilizes the most advanced materials and technology available on the market for boat building, which makes our boats lighter, stronger, faster and more fuel efficient compared to our competitors. Our process consists of using a special vacuum infusion lamination resulting in higher consistency, increased glass content (higher specific strength and stiffness), a high quality finish, and a faster cycle time.

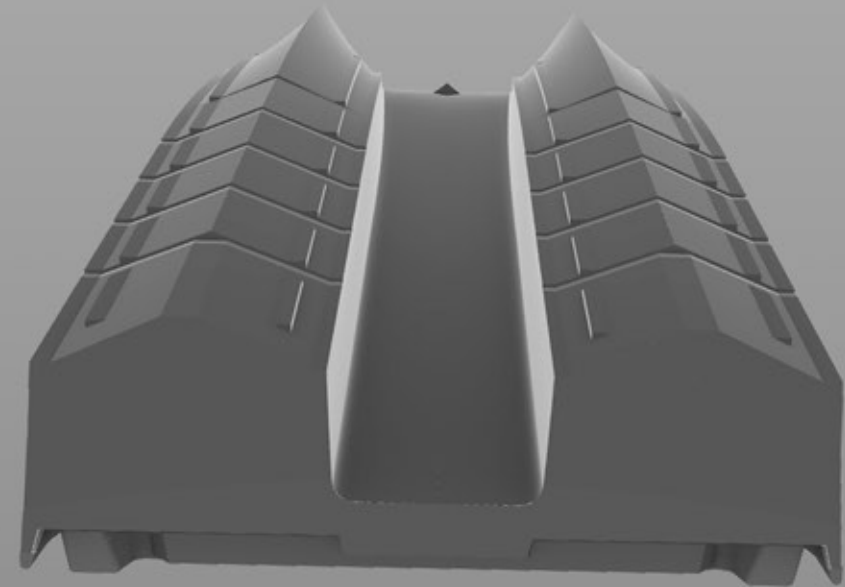


COMPETITIVE COMPARISON

	LENGTH	BEAM	DRAFT	WEIGHT	FUEL	TOP SPEED	CRUISING SPEED	MAX HP	LIVEWELL (STD)
Invincible 33	33'11"	10'3"	1'10"	14,000	400 Gal	65 MPH	41 MPH	900 HP	2 x 65 Gal
BlueCat 30	30'	12'6"	1'7"	13,220	500 Gal	103 MPH	52 MPH	1800 HP	2 x 50 Gal

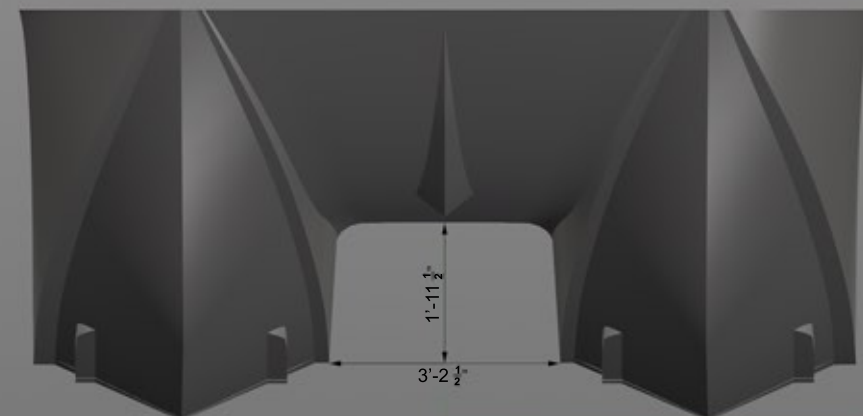
STEP HULL DESIGN

Our patented step hull design incorporates multiple stepped surfaces with a reverse radius chine along with spray-rails along the bottom of the hulls. These steps create air pockets that reduce surface tension and improve hydrodynamic lift. As a result, our boat can achieve incredibly high speeds and industry leading fuel efficiency.



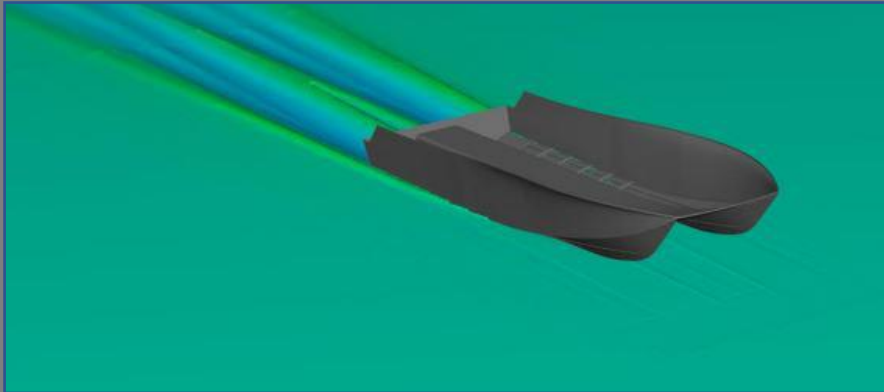
LARGE TUNNEL SPACE

The large tunnel space (1' 11" high and 3' 2" wide) between the sponsons of our 30' Catamaran is specifically designed for offshore operation creating a highly stable platform when running at speed, trolling, and drifting.



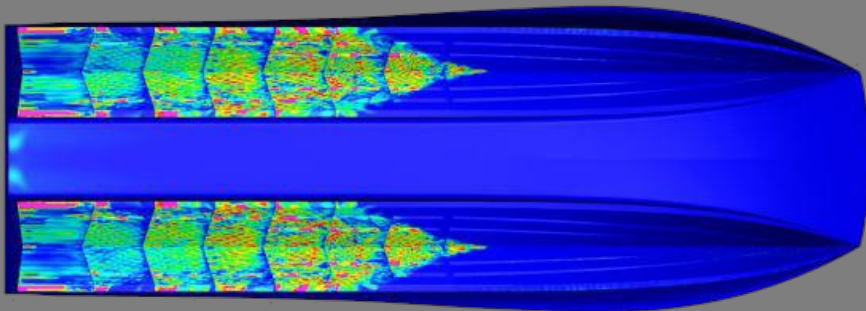
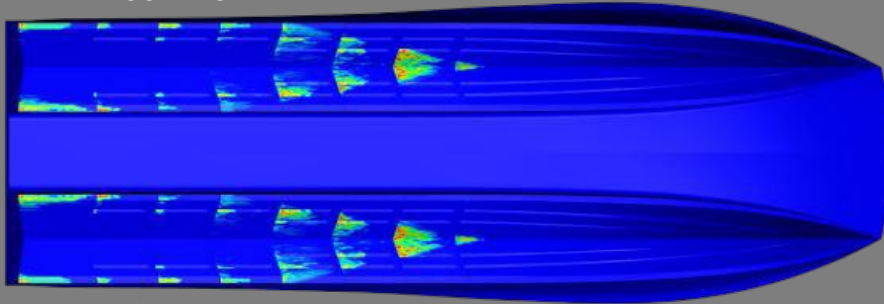
CFD ANALYSIS

Perspective view

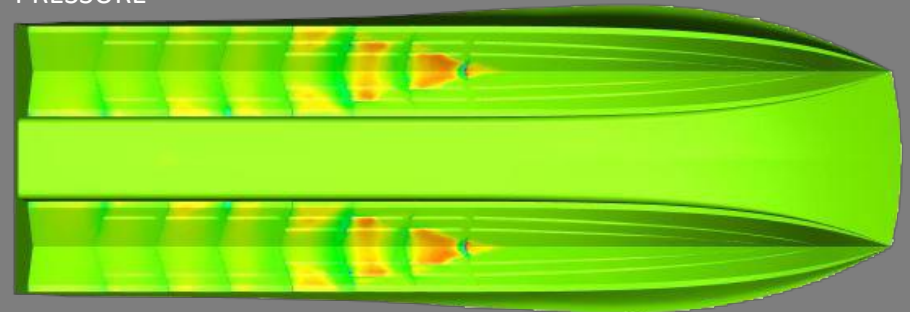


- 1) Our hull exhibits exceptionally stable behavior with respect to dynamic heave and trim at highest speed
- 2) Special characteristics evident from the trim and heave curves and allow our hull to perform in the unrivaled way that it does

WETTED SURFACE AREA



PRESSURE



FINAL DESIGN

LESS SLAMMING

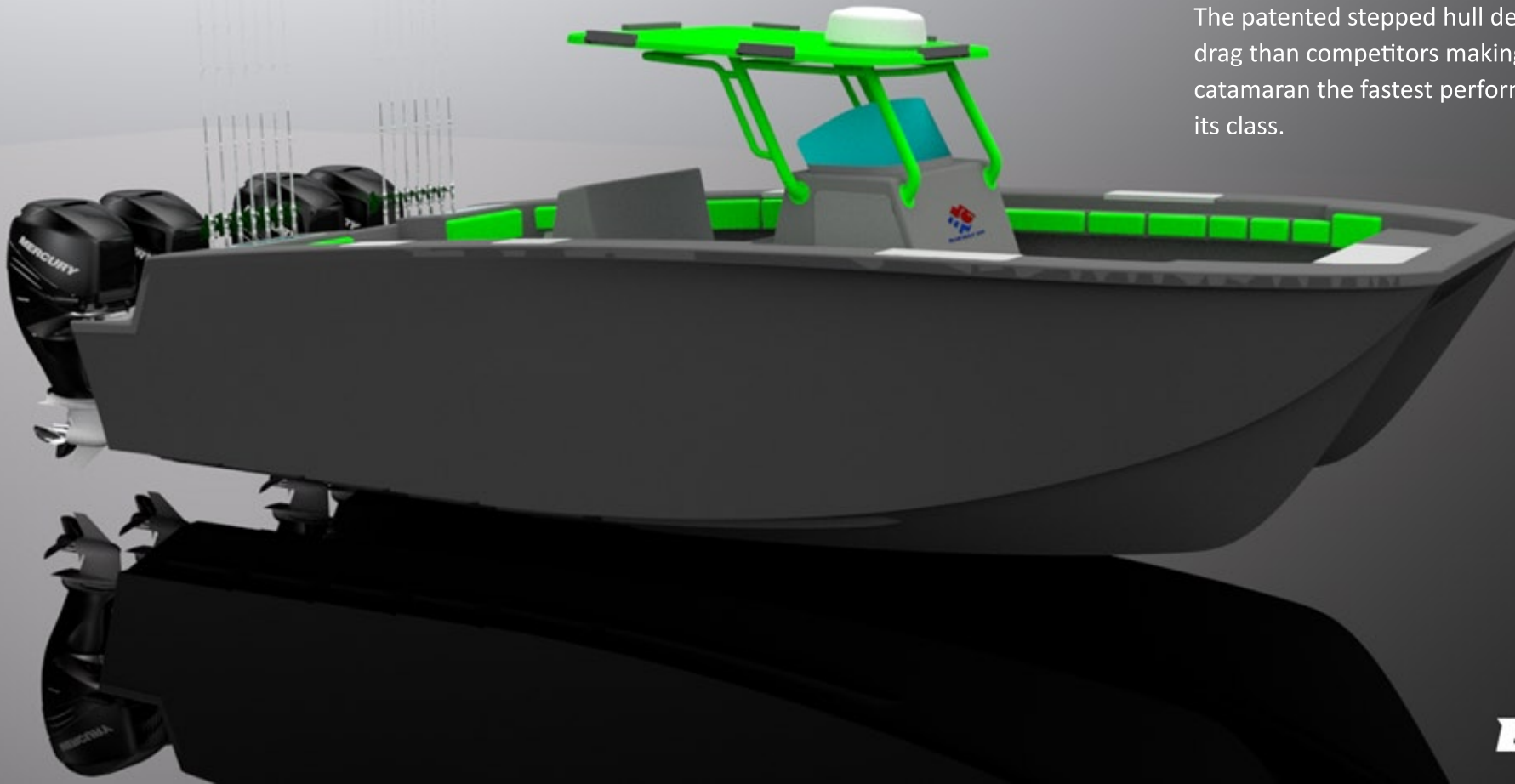
The 30 boasts a dry, smooth and comfortable ride due to the high wave piercing bow angle, 24° deadrise, and reverse radius chines.

STABILITY AND PAYLOAD

The ultra wide beam creates high stability when idle or full throttle and gives the vessel a high payload capacity without compromising speed. The result is a super high performance fishing platform.

LESS DRAG

The patented stepped hull design results in less drag than competitors making the BlueCat 30' catamaran the fastest performance fishing boat in its class.



BLUECAT

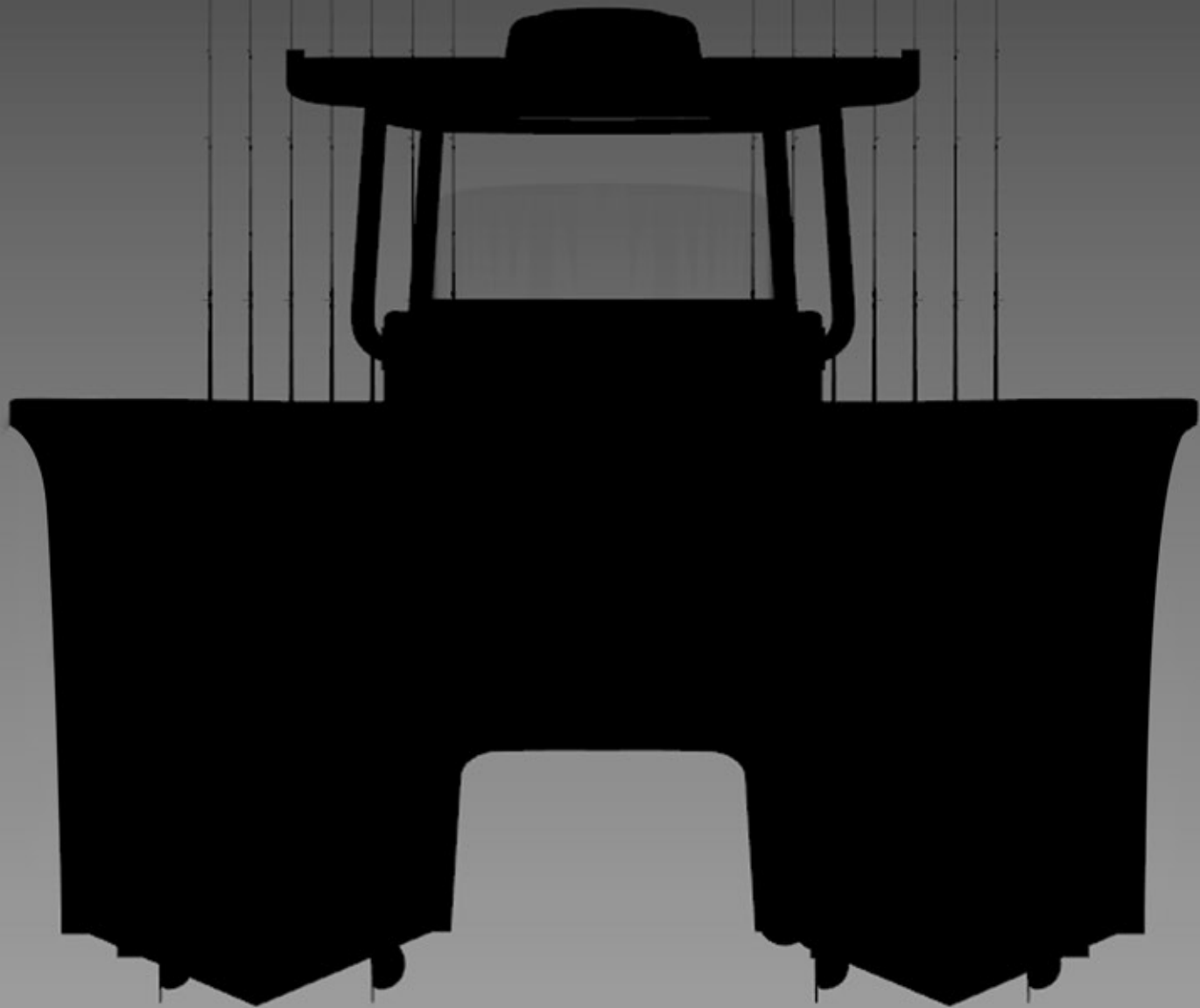
COMBINATION OF CARBON AND KEVLAR

The option to upgrade the hull construction to a combination of Carbon Fiber and Kevlar gives the hull a far superior strength to weight ratio making it capable of even higher top speeds. Also, as an added benefit, it gives the boat a very unique appearance by showing the fiber pattern of your selection.



BLUECAT

BLUE CAT_{30FT}
BUILT DIFFERENT






BLUECAT

Disclaimer: This brochure is designed to provide the reader with an introduction to the 30 ft. fishing vessel produced by BlueCat including standard equipment and available options. BlueCat USA LLC reserves the right at any time and without notice, to discontinue or change the features, design, materials, color, specifications and prices of its products.



 SCAN ME

-  **Blue Cat USA**
19100 SW Warfield Blvd.
Indiantown, FL 34956
-  info@bluecatusa.com
-  +1(833) BUY A CAT (289-2228)