

**BLUECAT**





## THE FUTURE STARTS HERE.

The BLUECAT 43 represents the future of marine industries with sleek lines carving a sharp path through the water, This astonishing boat marks the beginning of a new era: One of unrivalled power, exquisite craftsmanship and cutting-edge hull design.



We at BGC Understand the nation's vision for a product which is indigenously built and internationally combatant to secure the rich coast line of UAE

An unparalleled performing art

A home grown product, in the land of Abu Dhabi paralleled vision enabling forces to conduct and sustain operations throughout the gulf region,





Let's face it, where the weather and the seas can be pretty rough! High winds, heavy rain, waves and swells can be met, no matter where you are at sea. Designed and made in Abu Dhabi, we have put our boats to the test time and again in the rough waters. We are proud to say that our craft conquers it



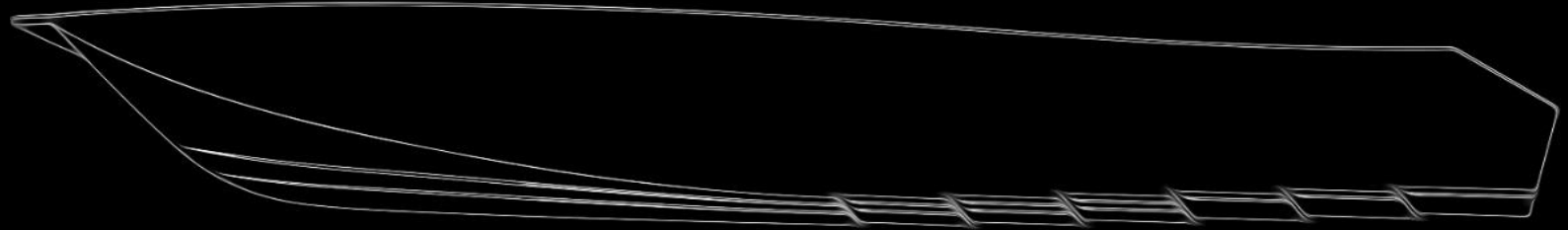
UN PARALLELED PERFORMANCE TO PROTECT THE COAST LINE

Water is more important than Oil"

Sheikh Mohammed bin Zayed



# LINES GENERATION



Emphasis was to create a light and stable form that is simple and dynamic



We have given special care to create a hull which is having minimum resistance to the length to breadth ratio.

A pursuit for creating products that redefine the marine sector. Simplistic and innovative products that reaches in and touches the core of every user



## MAIN PARTICULARS

Length overall	13.13 Meter
Length of Waterline	11.57 Meter
Breadth	4.3 Meter
Depth	2 Meter
Draft	0.55 Meter
Displacement	9 Tons.
Top speed	58 knots
Cruising Speed	35 Knots
Complement	4 crew, 4 people 2-3 Bunk bed space & Toilet

## ENGINE PARTICULARS

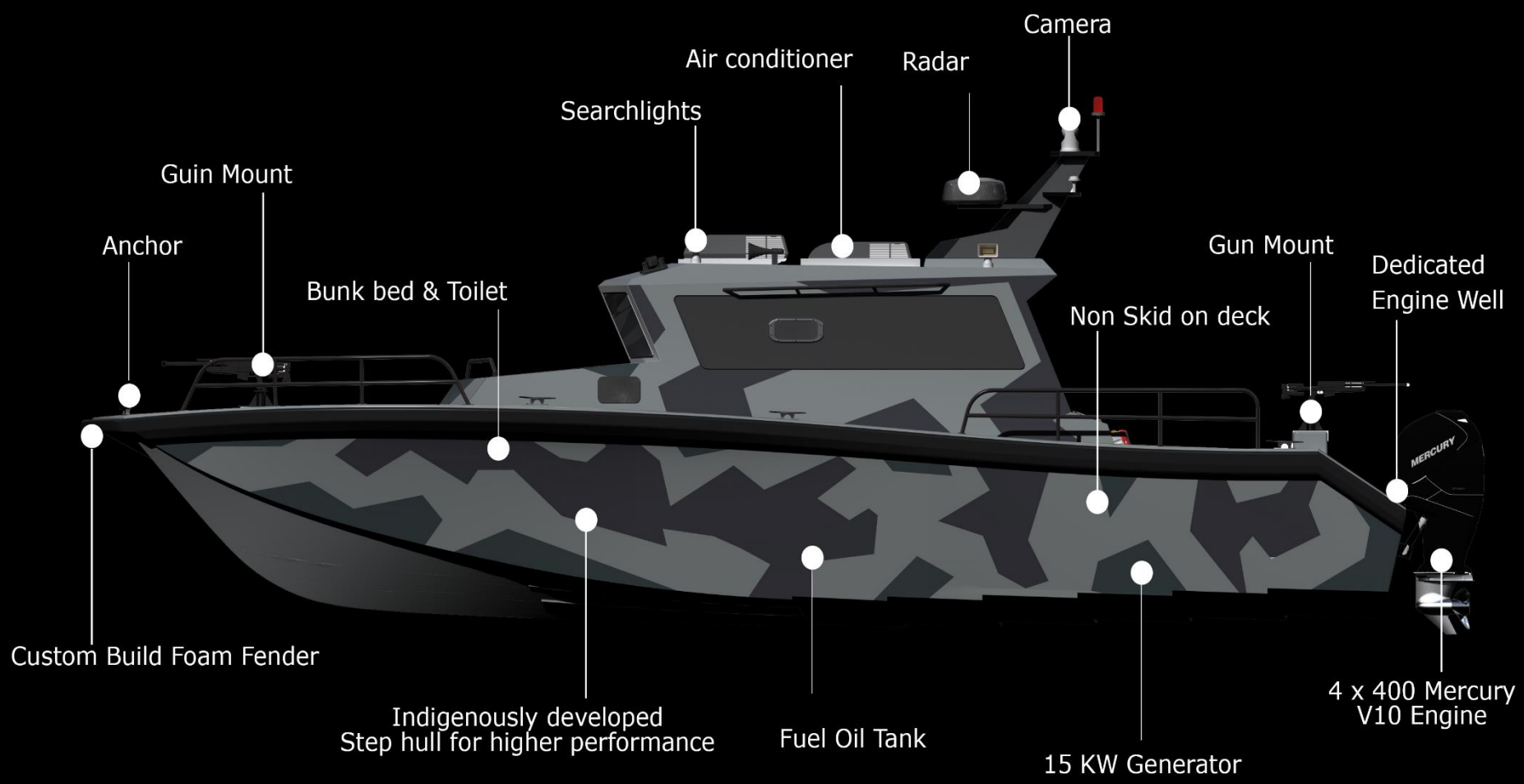
Engine	4 x 400 HP V10 Mercury
Generator	2x15 KW Fischer Panda
Fuel Capacity	580 Gallon
Diesel Oil Capacity	80 Gallon
Fresh Water Capacity	80 Gallon
Bilge Pump	6 Bilge Pump
Endurance	300 Nm

## HULL SPECIFICATION

Hull Material	FRP
Construction Method	Vacuum Infusion
Under BV classification	

## FIRE FIGHTING & LSE

Fire Extinguisher:	3 X 5B Extinguisher
Life Jackets	7 Life Jackets
Life Buoy	2 x Life buoy
Stretcher 1	

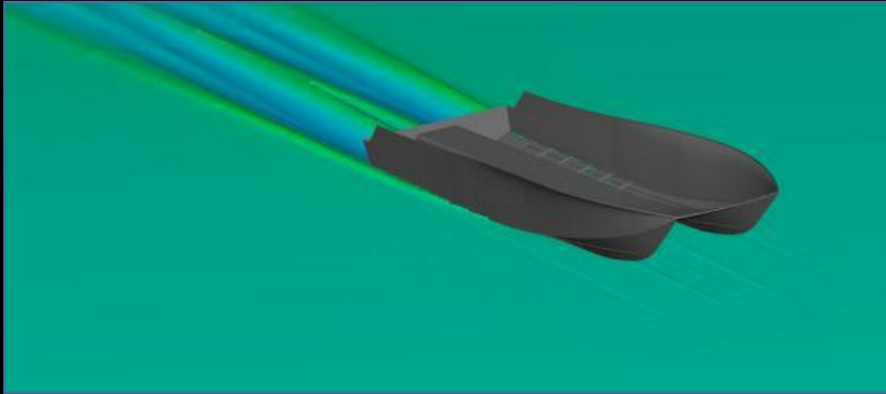


A PATROL BOAT WITH  
NO RATIONAL ARGUMENTS



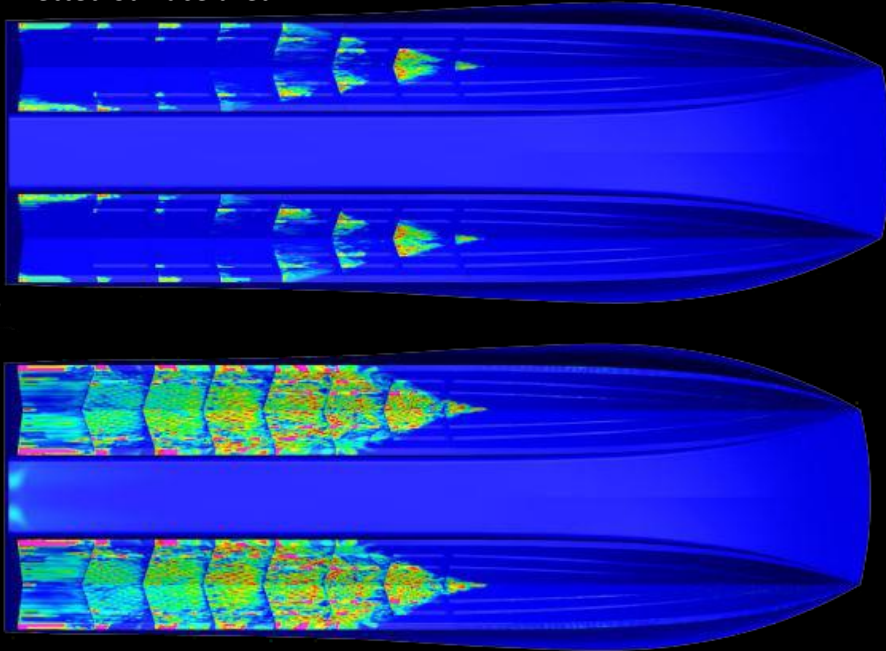
# CFD ANALYSIS

Perspective view

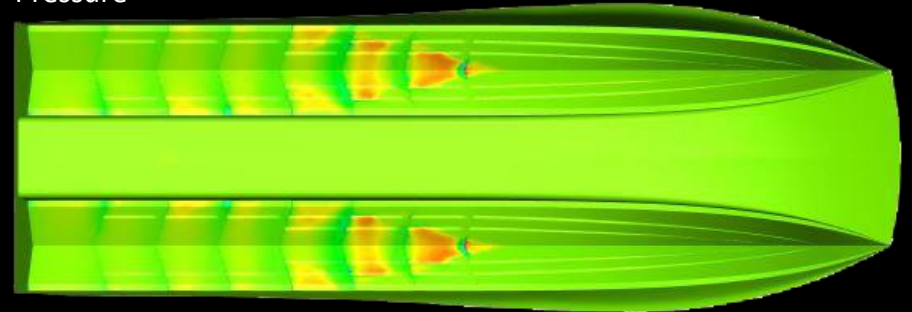


- 1) Our hull exhibits exceptionally stable behavior with respect to dynamic heave and trim at highest speed
- 2) Special characteristics evident from the trim and heave curves and allow our hull to perform in the unrivaled way that it does

Wetted Surface area



Pressure





## FINAL DESIGN

We have always curated the best and unique designs for our products. Specialized design ideas technology and expertise all integrated together to achieve the desired output that suits our innovative product line up, our 43 ft with hard chine, stepped hull and twin V hull form, build with advanced composite equipped with quad engine. It is designed to operate in both salt and fresh water, and to operate in Sea State 2 and survive in Sea State 4. The craft is capable of operating in all regions with assured top performance. It has a low profile suitable for ready concealment along seas and riverbanks. It is designed to be inserted or extracted using Marine External Air Transport (MEAT). This process allows the craft to be plucked out of water and repositioned if so required for safety or for tactical advantage. With a speed of up to 58 knots, extreme maneuverability, and high survivability, the 43 ft is an ideal platform for command and control, armed escort, direct fire support, troop transport, pursuit, interception, scouting, and patrol maneuvers in all environment, in harbors, and around offshore installations.

### LESS SLAMMING

Smooth and comfortable ride due to high wave piercing bow angle,

Reduced risk of injury, lower passenger and crew fatigue and related medical

### STABILITY AND PAYLOAD

High Stability and Balance When Idle or full throttle and

High Payload Capacity without compromising speed

### LESS DRAG

Stepped Hull less Drag than non-stepped  
Deep v hull

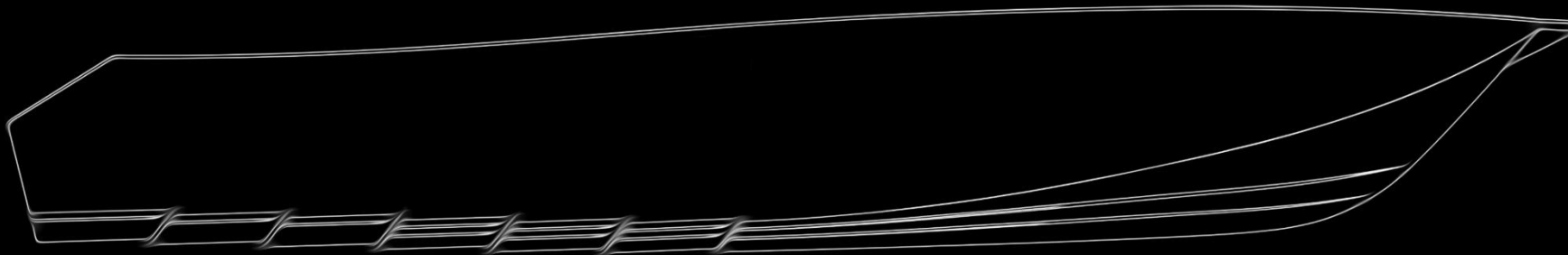


# BUILDING TECHNOLOGY

BGC utilize the most advanced composite materials and technology in boat building, which makes our boat lighter, stronger, faster and more efficient leading to superior quality and performance

We at BGC follow Vacuum Infusion Process for manufacturing which is an advance process for making high quality composite boats with higher quality, better consistency, higher glass content (higher specific strength and stiffness), good interior finish and faster cycle time.

PVC cores provide excellent mechanical properties to low weight. The unique combination of PVC and fiber sandwich composites, yields impressive mechanical performance to a low weight. PVC core and fiber sandwich composite method has been used and has a proven track record in our all model



## *Why BGC..?*

### Quality

High Quality Manufacturing ISO  
9001: 2015 certified

### Cost-Effective

Cost Effective Solutions Using  
Fiberglass and Composite Materials

### Reliable

Reliable On-Time Delivery  
of Boats

### Service

Superior Customer Service

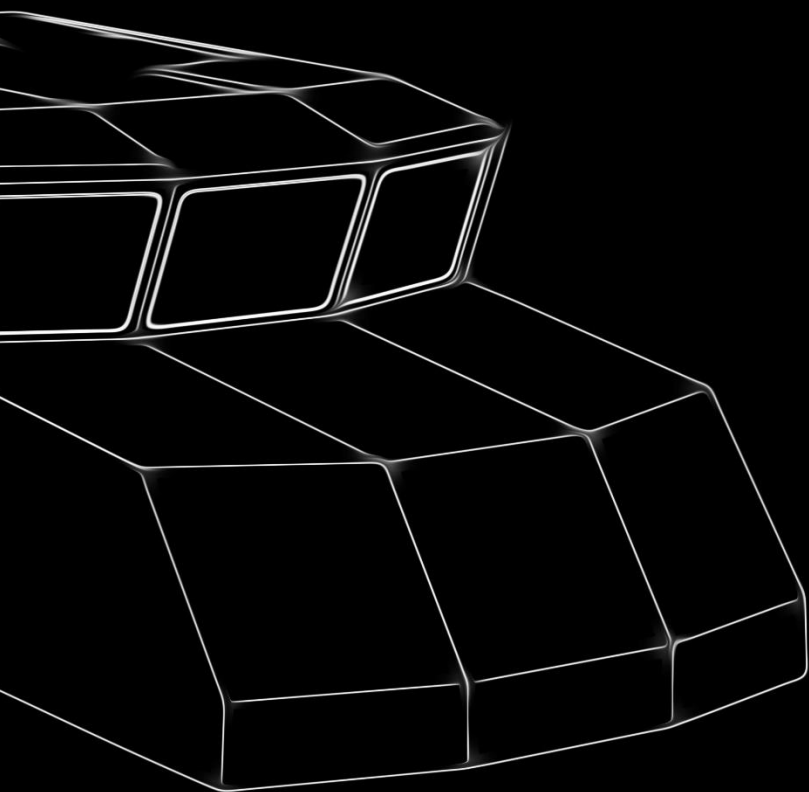


# BLUE GULF CAT IS THE FIRST TO PRODUCE THE FULLY EXPOSED CARBON FIBER BOAT IN GCC

The materials of choice for the world's finest super cars and aerospace is carbon fiber we have applied the advanced technology, process and materials to our boats.

Efficiency with an unmatched power to weight ratio, carbon boats is top in its class with up to 50% faster cursing speeds at the same or better gas mileage with combination of world's most powerful and efficient engine our boat creates the unmatched efficiency in their class

Production on the highest technical level combined with masterful craftsmanship and most advanced material this is the quality standard of the BGC



## CARBON FIBER

- High Strength to Weight.
- Highest Tensile.
- Compressive Strength.
- Most Rigid.
- Low Coefficient of Thermal.



## KEVLAR FIBER

- Light Weight / Density.
- High Toughness.
- High Energy Absorption.
- High Impact Resistance.
- High Crack Resistant.



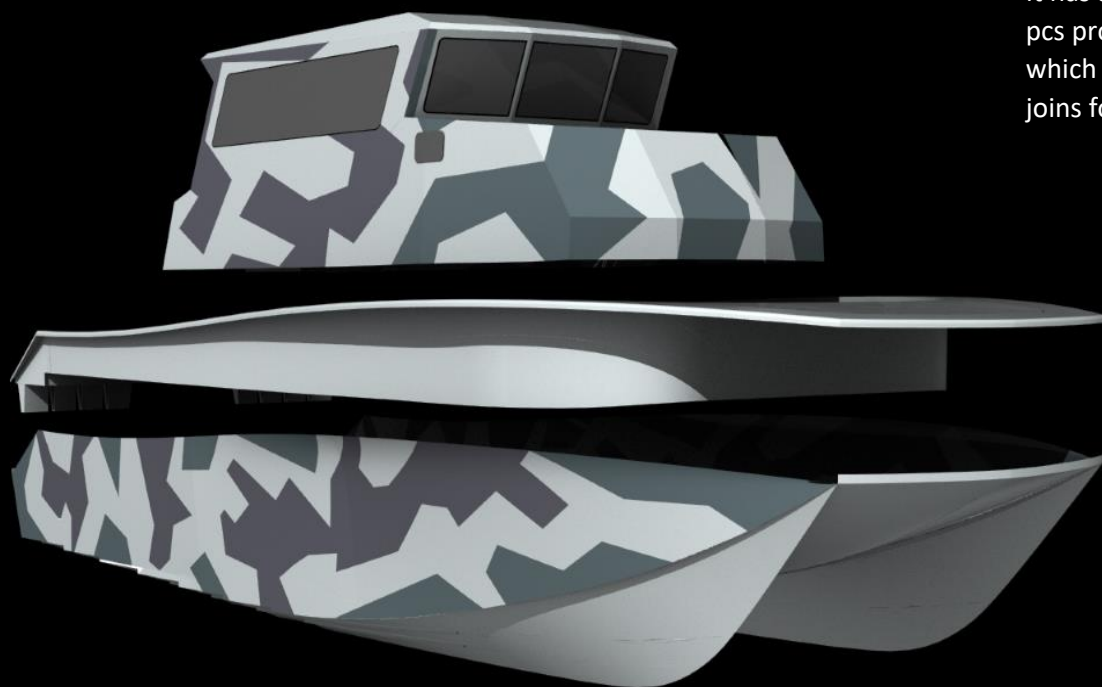
The BLUECAT 29 FT was introduced with fully exposed camouflage carbon with max speed 100 mph

BGC utilize the most advanced composite materials and technology in boat building, which makes our boat lighter, stronger, faster and more efficient leading to superior quality and performance.

On the highest technical level combined with masterful craftsmanship and most advanced material this is the BGC quality standard

It has also enabled the design team to take 3 pcs product i.e. hull deck and superstructure which minimizes the unwanted tapping for joins for an even sleeker appearance.

Its sculptural and sharply defined form is made possible by super forming technology, a precision technique that involves infusion technology.



**UNPRECEDENTED  
STRENGTH AND  
UNRIVALLED STYLE**

Feature special surfaces on hand rail that aids grip.



Air cooled air conditioner



Bed lights



Custom build gun mount & matt black finish



Non Skid



A beautifully integrated fixed glass for the side and front which gives the clear 360 view from the cabin.



Every exterior detail has been carefully crafted Bow roller, anchor and cleats are set into polished stainless steel.

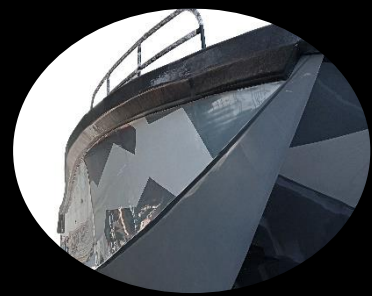
Dedicated engine well



Custom build mast



Custom build foam fender





## AN INTUITIVE IN-BOAT EXPERIENCE

Apart from the front glass 43 IPV is installed with long glasses on both side which enables crew to have unrestricted vision during day and night operations.

Handrails are provided for higher safety of the crew.

Port holes are provided on both side.



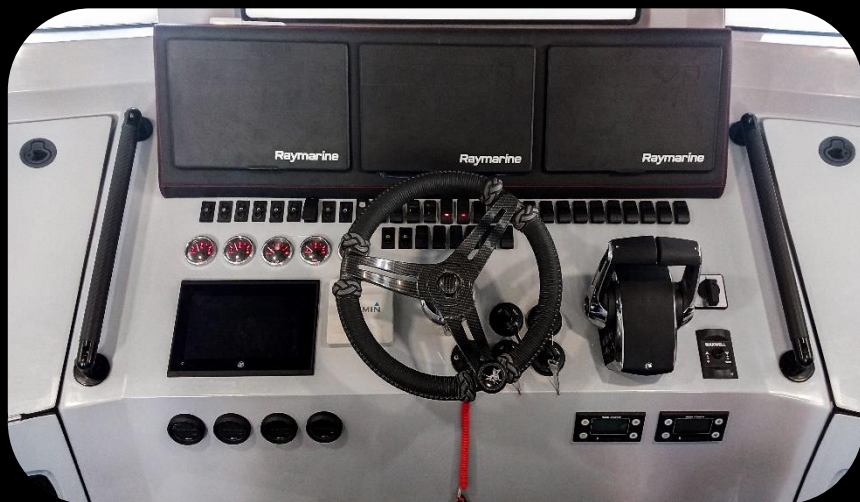
The 43 IPV is equipped with state-of-the-art technology, inside and out.

A high resolution screen sits in the center of the fascia, providing driver with unobstructed view with easy access to the various system in the cockpit cutting.

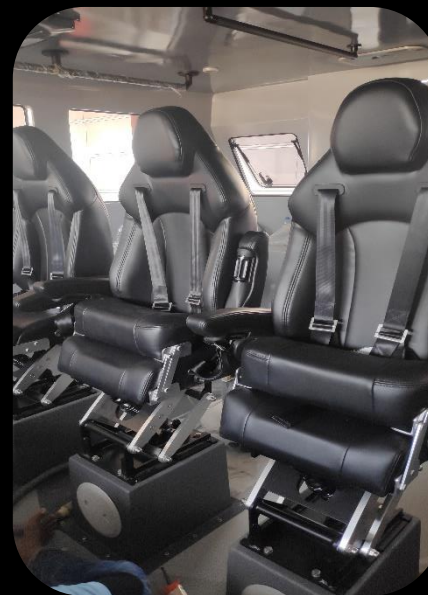
The wide screen can be split into two or three independent windows – providing key interface and navigation for the driver,

## A PLACE FOR EVERYTHING.

Every control in the 43 IPV has been positioned with great thought, so everything can be operated intuitively.



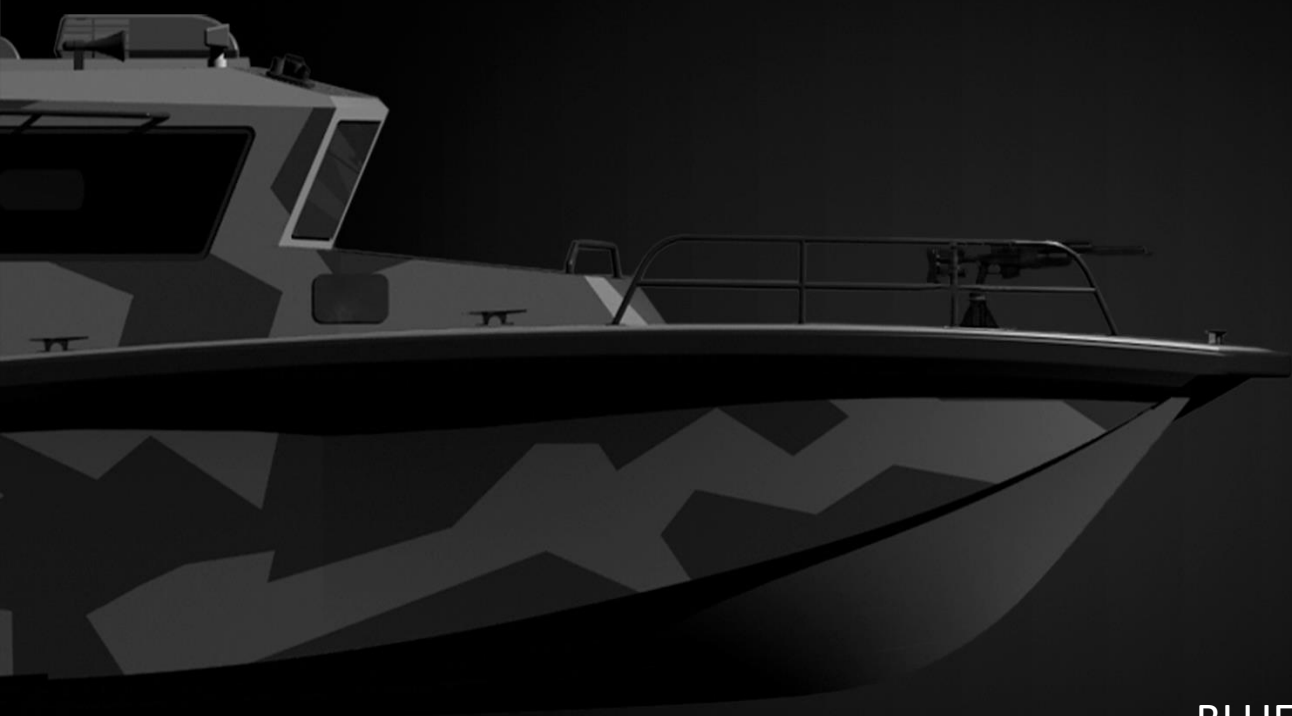
A high-resolution easy to read gauge for fuel, diesel and water. Bilge area alarms



For higher comfort 43 IPV is equipped with Shock mitigating seats.

For prolonged stays at sea the wellbeing of the crew is vital. Bunk beds, toilet and provision for galley make the stay on board as pleasant as possible





BLUECAT 43 IPV IS EQUIPED WITH VARIOUS  
ARMAMENTS (Machine Guns, Automatic guns)



When we founded our shipyard to design and built fast boats in advanced composites our dream was to become world leader in our field. The indication were not favorable that such an ambitious undertaking would succeed. But the few boats that we created with such pride and pleasure left us free to build boats just the way we wanted them. Today we happy to see that we have customers who share our ideals

Today blue cat is an industrial scale enterprise with a modern ship yard capable of serial production of state of the art pleasure, commercial and naval craft. We are proud that with a highly dedicated workforce capable of creating our own concepts developing our own new technology and building to perfection. Now blue cat is a technology leader, standard setter just as our dream

Our initiatives continues in research and development of new technologies in order to hold the leading position won by imaginative application of our skills and technological resources. This will ensure that now and in the future we will continue to fill our customer's requirement and keep our commitments

## A journey that never ends

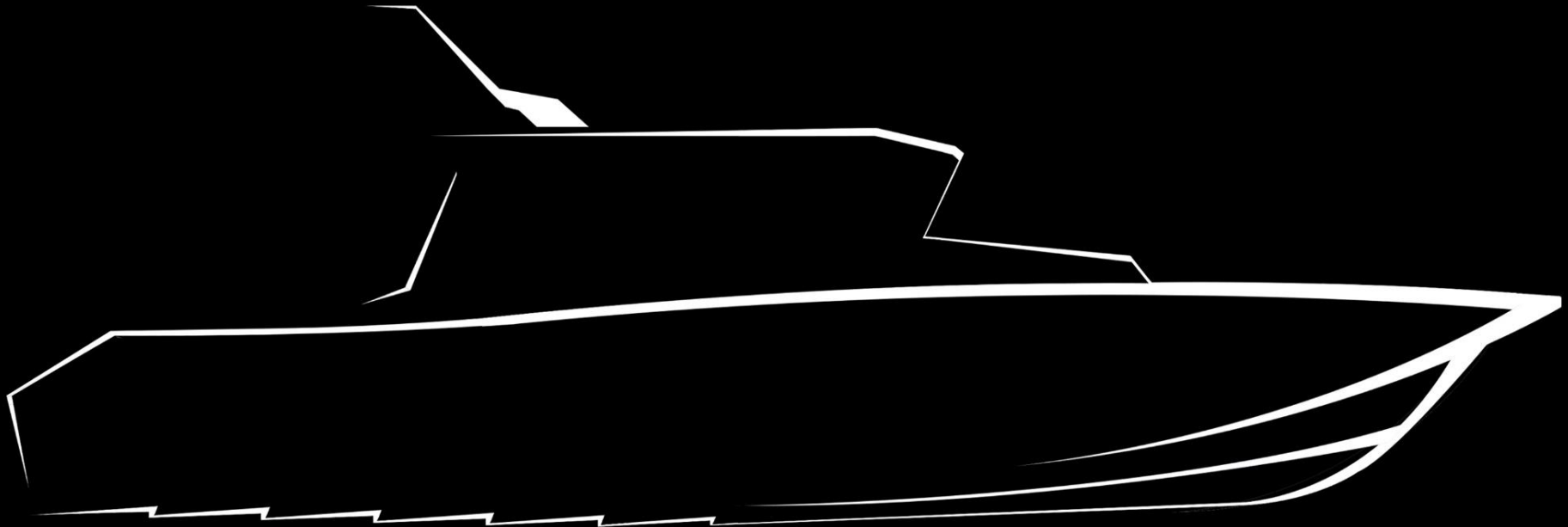
BGC is always looking to the future, seeking new innovations that push the limit of what is achievable, in order to make tomorrow's experience even more exciting than today's.



43 ft PATROL VESSEL  
THE ART OF PERFORMANCE

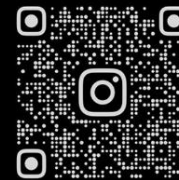


**BLUECAT**



**43 FT PATROL VESSEL**

Disclaimer: This brochure is designed to provide reader with an interdiction to 43 ft. patrol boat including available optional extras. Because of changes in condition and circumstances, BGC reserves the right at any time and without notice, to discontinue or changes the features, design, materials, color, specifications and prices of it products and to either permanently or temporarily withdraw any such products from the market without incurring any liability to any prospective purchaser.



bluegulfcats

-  Blue Gulf Shipyard  
Abu Dhabi Industrial city-ICAD II-  
Abu Dhabi –United Arab Emirates
-  [info@bluegulfcats.ae](mailto:info@bluegulfcats.ae)
-  +971506628222 ,+971508007938