

DuraFloors

Laminate Flooring Installation Instructions

(12mm)

SUBFLOOR EVALUATION & PREPARATION

- The subfloor should be evaluated for moisture and properly prepared prior to installation. The subfloor should be level and clear of any dirt or debris
- Installation is NOT allowed over any type of carpet.
- DuraFloors can be installed over most existing hard surface floors, provided that the existing floor surface is clean, flat, dry, and structurally sound. For tile, grout lines need to be filled and levelled.
- Existing sheet vinyl floors should not be heavily cushioned. Soft underlayment and soft substrates will diminish the product's click system.

PRE-INSTALLATION

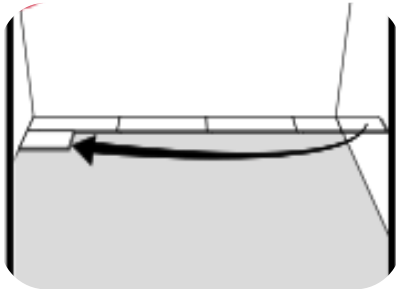
- We suggest allowing the product to acclimate in the area where it is going to be installed where temperatures are kept between 55°F and 85°F (13°C and 30°C). Failure to comply with these installation parameters may disallow warranty coverage. 48-72 hours is required for proper acclimation
- To ensure the best results we suggest you square your room prior to installation, Exterior walls are commonly known to be more square than interior walls.

INSTALLATION

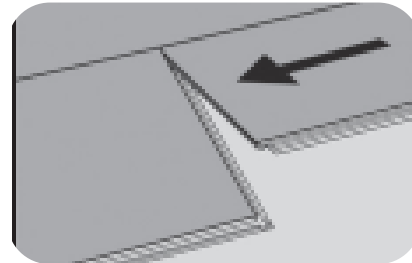
- A ¼" expansion gap left between the planks & the walls are required to allow for minor expansion & contraction during temperature changes
- A 6" stagger between rows is required to ensure warranty. By no means should the joints of planks line up unless separated by multiple rows. (2+)
- When fitting under door casings, a flat bar may be used to assist in locking the planks. If needed, tap the long joint while applying pressure from the flat bar to assist in clicking the joint together.
- **Please refer to the visual guide below.**

DuraFloors

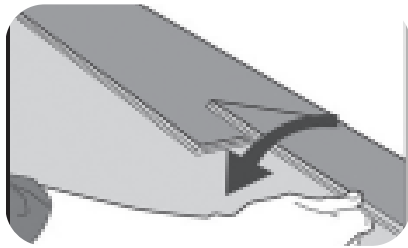
- Please refer to the visual guide below.



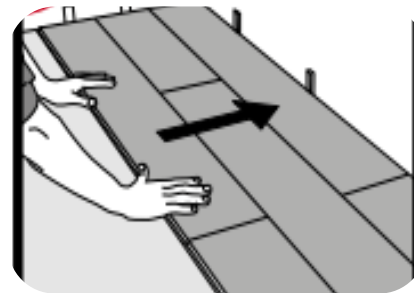
we recommend to install the entire length of the first row



After installing the first piece of the second row, click the long joint of the plank into the previous row and slide it into place



Lower the plank down flat, using a mallet to tap the small joint down into place
(A tapping block may be required to lock plank into long edge)



Continue this step, ensuring you stagger each row appropriately

We value your business and aim to provide the best service possible. Thank you for choosing DuraFloors for your flooring needs. Your satisfaction is important to us, and we are here to assist you throughout the return or exchange process.

**DuraFloors Distributors - #110 – 2955 Acland Rd - Kelowna, BC - Info@durafloors.ca - 236-258-3872
www.Durafloors.ca**