

## KRX 1000 DOOR HINGE BUSHINGS



Start by removing all the screws/push pins in the door frame and the two bolts that hold the latch to the door

They are a #3 Philips. Using a #2 may cause damage

You do not need to remove the torque head bolt circled in red

Remove the factory pin and bushings from the hinges

There is a c clip on the bottom side of the pin that holds it together

Install the new bushings as shown

**DO NOT OVERTIGHTEN THE SMALLER HINGE BOLT**

**ALL IT NEEDS IS TO BE SNUGGED DOWN**

The larger bolt will go on the frame side of the machine at top location of the upper hinge and at the very bottom location of the bottom hinge



The smaller bolts will bolt onto the door frame itself



Insert the new pins and be careful not to lose the small c clips that hold the pin in place.

Pin c clip groove will face down like the factory did





with this bushing design you are not using all four “pivot” locations  
just the very top and the very bottom

Two bushings sets and two pins are used for one door

Now is a good time to check door alignment to the striker

Make any adjustments if needed to the bolted bushings as there is a little wiggle room

Before re assembly of the plastics you will need to clearance the lower door plastic for it to fit correctly.

You can either drill a hole where the bushings protrude or follow the next steps

There is a flap on the lower inner plastics of the door.

Cut it like shown in the picture

This will allow clearance for the new bushings



Re assemble the door plastics

Now is a great time to clean and lube the door latch cable for smooth operation

Check alignment of the door latch to the striker

Adjust striker if necessary

The door should close like it was a brand-new machine again.

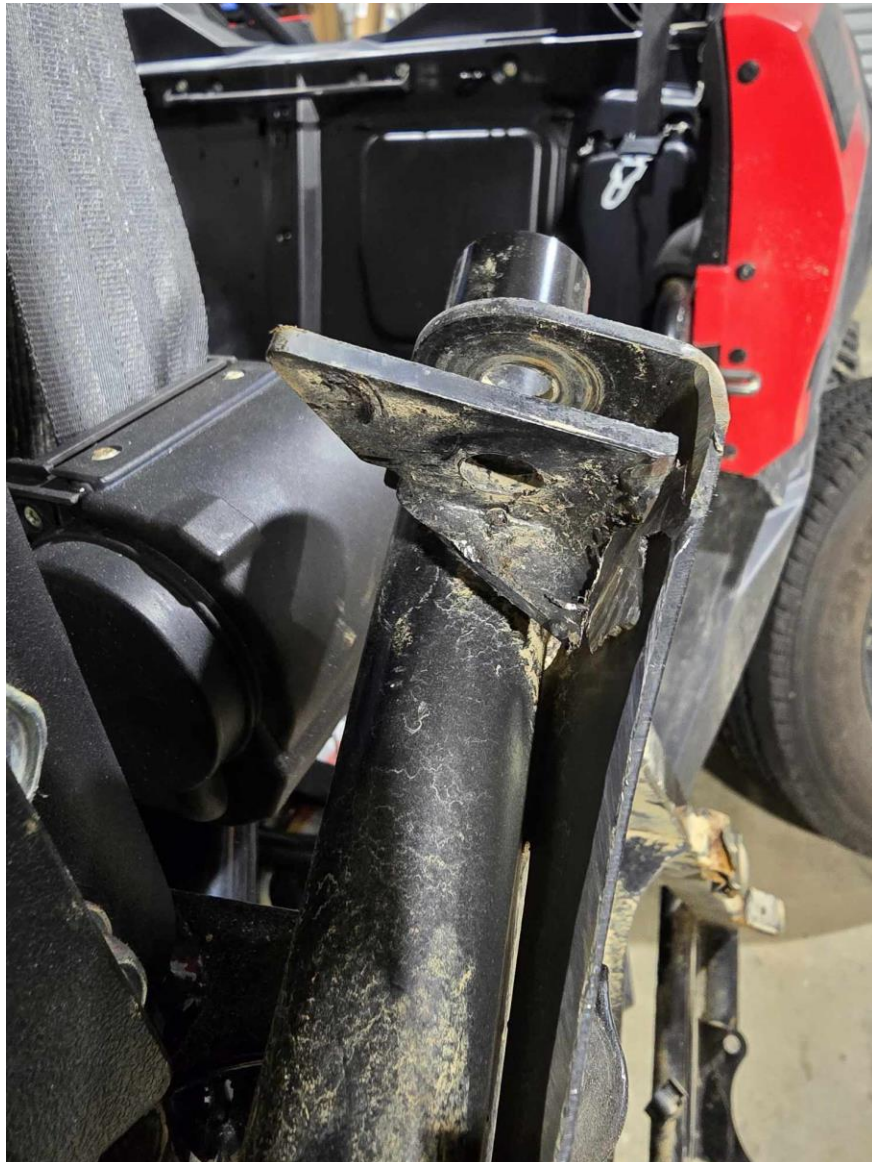
## KRX 4 SEAT REAR DOORS

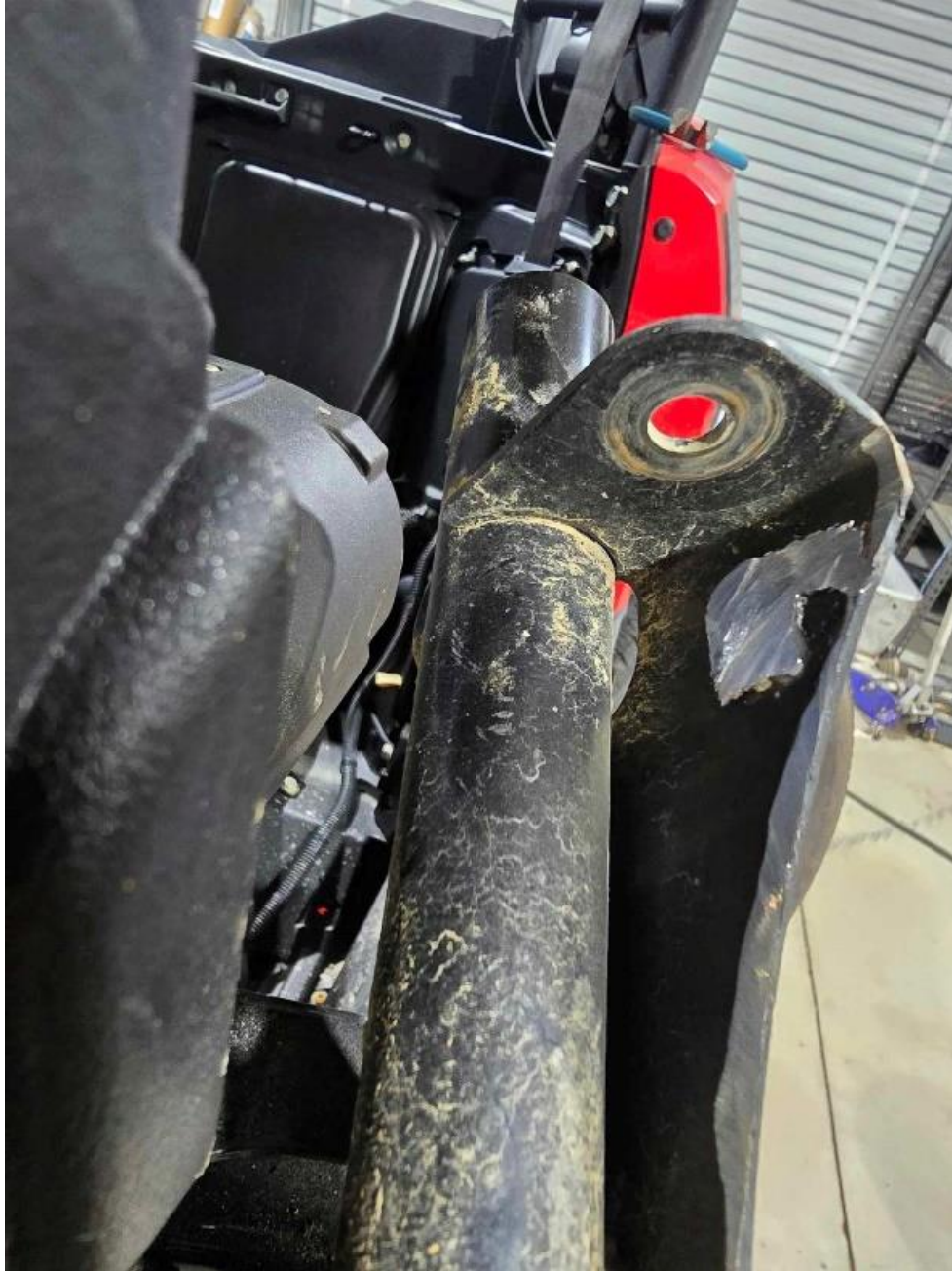
REAR DOORS ARE SIMILAR TO THE FRONT DOORS WITH A FEW DIFFERENCES

Take the door skins off in the same manner as the front doors.

On the upper portion of the door frame next to the pivot point you will find a door stop tab  
This tab will need to be cut off with a cutoff wheel, hack saw or any other means of removal.

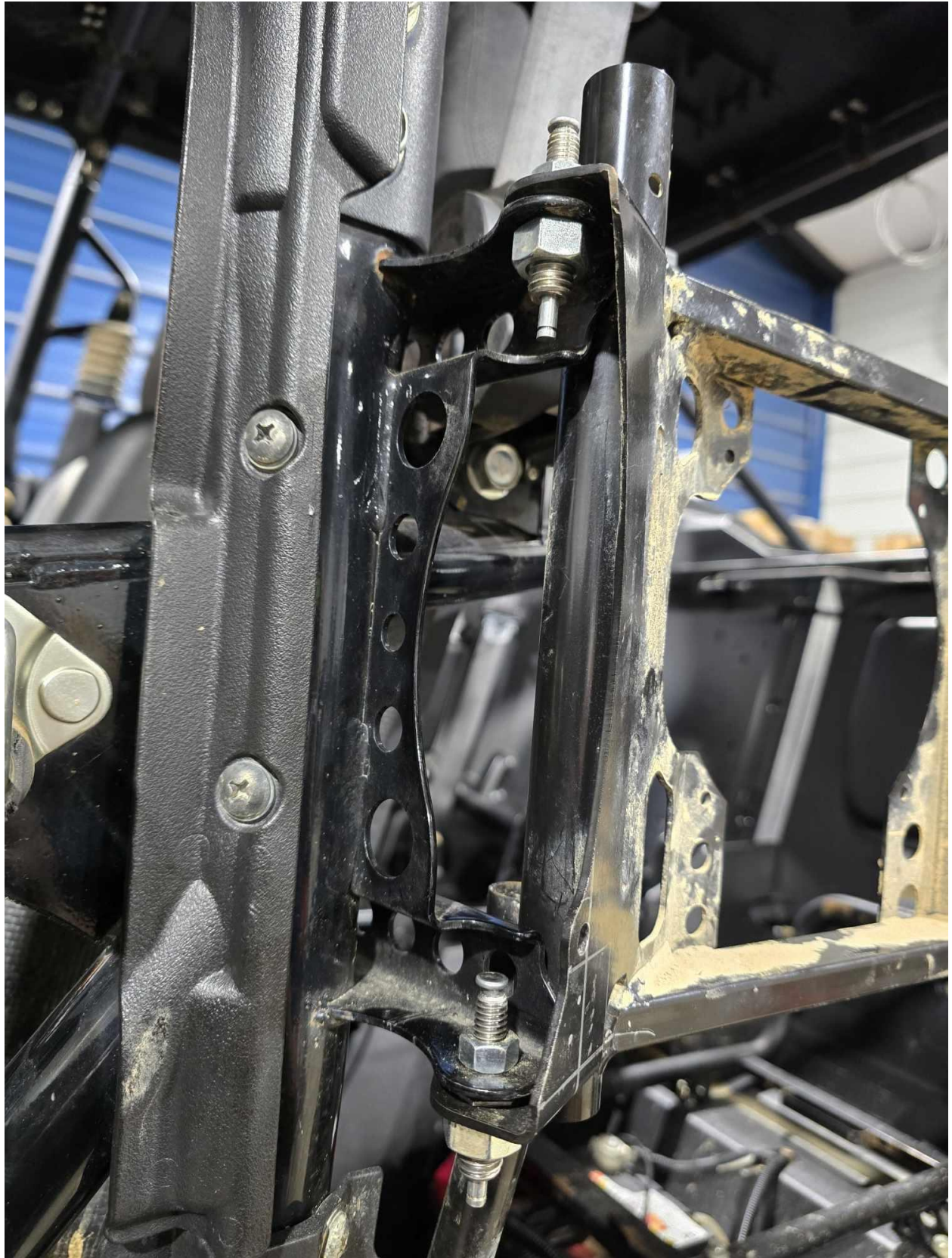
We will put a door stop back in a different location





Once the tab is removed you can install the door bushings in the same manner as the front doors referenced in the beginning pages of this document







## DOOR STOP

On the bottom of the door frame there is a factory hole location that you will bolt the provided door stop bracket to.

After one bolt is installed and the bracket is adjusted to clear the frame side door channel you will need to drill the second hole in the door frame and attach the hardware provided

