

The Meadows At World Golf Village - Saint Augustine, Florida 32092

The information below was sent to me today, August 10, 2023, in a weekly news update, and I am sharing it with everyone because I consider it to be extremely important for every resident.

Mike Krugman

The Meadows at World Golf Village

Mobile: 904-347-9898

IMPORTANT INFORMATION FOR RESIDENTS IN THE WORLD GOLF VILLAGE AREA

Over the last several weeks, I have been meeting with several **FDOT**, county, and state officials. There are a lot of changes that will be happening around the **World Golf Village (WGV)** area. Many of these changes need to be brought to the residents for their input. And that time is now!

FIRST COAST EXPRESSWAY

First Coast Expressway (FCE) should be complete by 2031. This is the expressway that is an outer beltway to I-295 and runs from the Cecil area – over the Shands bridge and will connect to **I-95** between **CR210** and **International Golf Parkway (IGP)** exits.

FDOT must widen I-95 to 8 lanes before the FCE connects to I-95. **FDOT** will begin the I-95 widening process starting in 2025. **FDOT** says they will widen to 8 lanes from International Golf Parkway (IGP) northward to Duval County.

(Diagram below of FCE in green/yellow/red)



WORLD COMMERCE PARKWAY LOOP

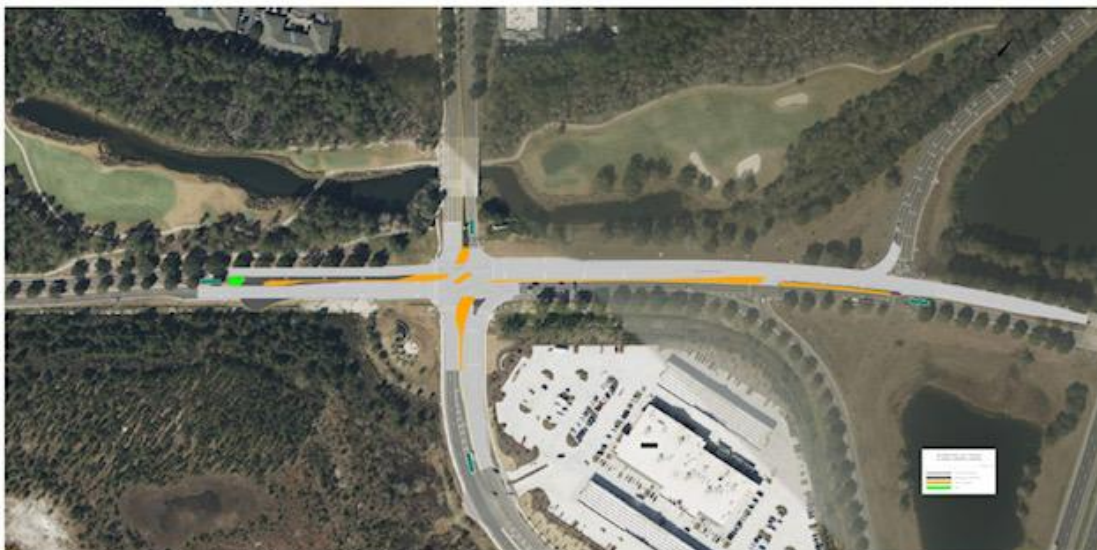
World Commerce Parkway loop currently includes: **Buc-ee's**, **Costco**, and **Gate** gas station. Other confirmed businesses coming to the loop are: **Bass Pro Shops**, **Home Depot**, a high-end car dealership, and a lifestyle center.

FDOT'S PROPOSED IGP U-TURNS DESIGN

FDOT is currently working on a traffic design to help with the **IGP** congestion. They are proposing to rework the traffic flow at the **Buc-ee's** stoplight on IGP.

This proposed traffic solution is estimated at \$20 million.

This is the diagram of their **IGP U-turns** design.



Key:

Light gray: milling & resurfacing

Dark gray: new construction

Gold: traffic separators

Light green: grass

Potential issues with this proposed **FDOT** traffic solution at the **Buc-ee's** stoplight:

- Northbound and southbound lanes can only make right turns:
 - Example: vehicles coming from the north (Cascades, Caddyshack, etc.) cannot turn left to go to the interstate; instead they must first turn right, drive west, do a U-turn, then proceed east towards the interstate
 - Example: vehicles coming from the south (Buc-ee's, Costco, etc.) cannot turn left onto IGP; instead they must first turn right, drive east, do a U-turn, then proceed west on IGP

The Meadows At World Golf Village - Saint Augustine, Florida 32092

- Or vehicles have to find alternate routing to avoid the Buc-ee's stoplight intersection
- Vehicles pulling large boats, large RVs, and 18-wheeler supply trucks have difficulty doing U-turns
- Not enough help for the serious congestion on IGP (which is increasing every day)
- Does not take fully into account the long-distance customers coming via I-95 to Buc-ee's and Bass Pro Shops

HERE'S A DIFFERENT OPTION! EXIT RAMP TRAFFIC DESIGN



After working with several engineers on this, I personally feel this option is the best:

- The yellow line represents an exit ramp that would go from I-95 south directly to World Commerce Parkway loop. It includes a bridge that goes over the southbound ramp entering I-95
- This new southbound exit ramp would eliminate 50% of the World Commerce Parkway traffic from exiting on to IGP from I-95
- Would eliminate traffic from backing up on the I-95 before the exit (which is already happening)
- The cost for this I-95 exit ramp is also estimated around \$20 million (the same as FDOT's proposed IGP U-turns design.)

OTHER DESIGNS

That being said, someone might have an additional solution that would help with the movement of traffic that is not cost-prohibitive. Feel free to submit those designs as well.

FUNDING

Funding sources can come from the developer, county, state, TPO and/or FDOT.

This year the FDOT budget was nearly **\$12 Billion** and **St. Johns County is the fastest growing county in the state.**

Also, important to note is that interstate work is a top priority for the FDOT.

ACTION ITEM! EMAIL NOW!

Since the FDOT has brought forth their proposed option, **we must quickly email our elected officials if we want to see any other options considered.** Once they go to bid and spend \$2 million on the design process it will be too late to consider any other proposed solutions.

No matter what option you prefer, this is your time to be heard.

Please email the following elected officials:

- Speaker Paul Renner
- Representative Cyndi Stevenson
- Senator Travis Hutson
- Commissioners:
 - Whitehurst
 - Arnold
 - Alaimo
 - Joseph
 - Dean
- Interim County Administrator Joy Andrews

(You can copy & paste this group of emails below)

EMAIL ADDRESSES:

Paul.Renner@myfloridahouse.gov, Hutson.travis@flsenate.gov, Cyndi.Stevenson@myfloridahouse.gov, bcc1cwhitehurst@sjcfl.us, bcc2sarnold@sjcfl.us, bcc3ralaimo@sjcfl.us, bcc4kjoseph@sjcfl.us, bcc5hdean@sjcfl.us, jqandrews@sjcfl.us

SAMPLE BODY OF EMAIL:

I am for the Exit Ramp Option at International Golf Parkway. A ramp that goes directly from I-95 Southbound to the World Commerce Parkway loop would eliminate 50% of the traffic from exiting on to IGP from I-95. And it is estimated at the same cost as the FDOT's proposed IGP U-turns design.

(your name & address)

SAMPLE SUBJECT LINE:

WANT EXIT RAMP OPTION AT IGP & I-95

The above message is from "**Kim Kendall's Weekly Update, August 10, 2023**"

Link: <https://us17.campaign-archive.com/?e=5aefd0a05a&u=918596c33553bdbb034af1a4e&id=95ea181ac7>