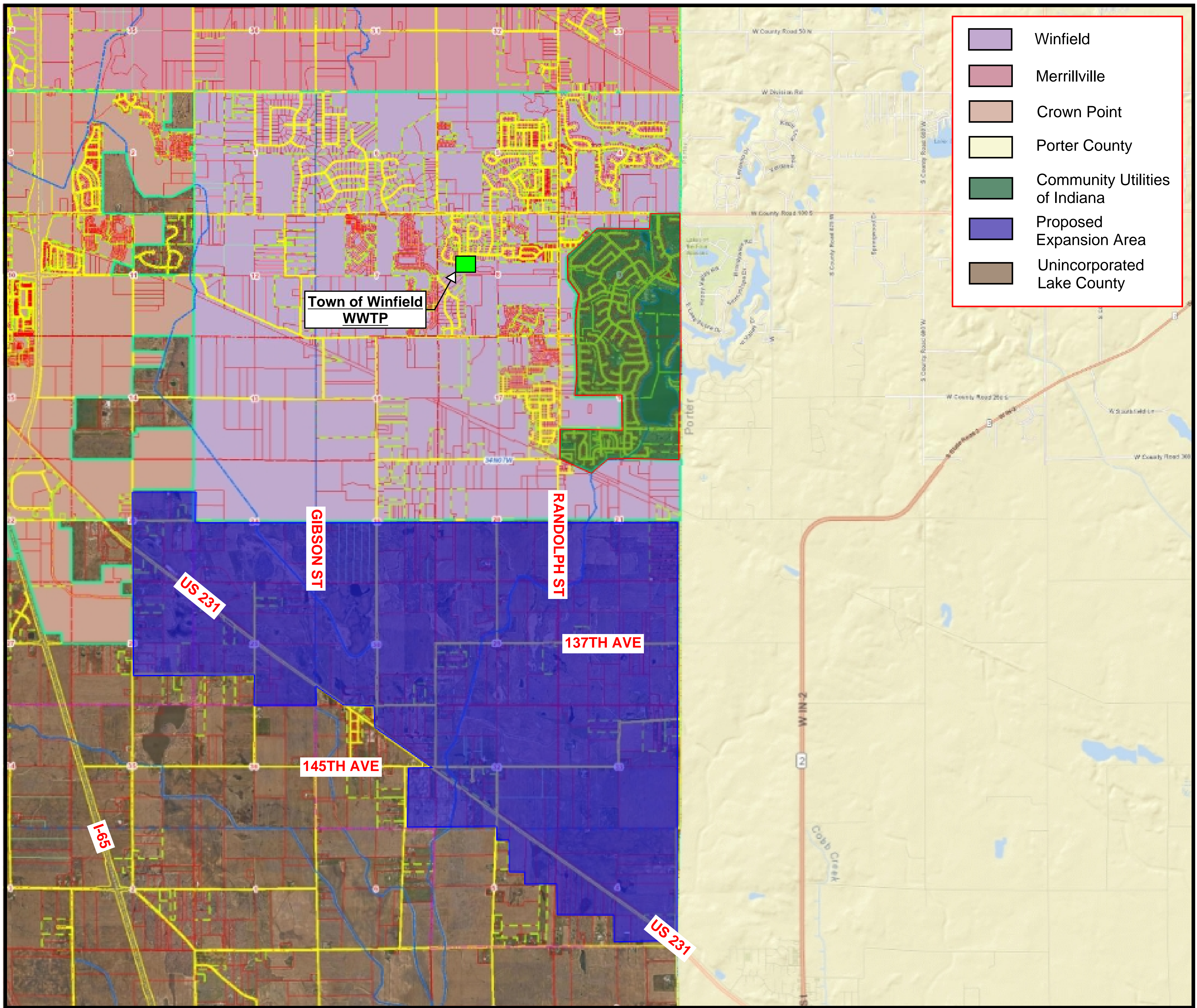


Petitioner's Exhibit 3



- Winfield
- Merrillville
- Crown Point
- Porter County
- Community Utilities of Indiana
- Proposed Expansion Area
- Unincorporated Lake County

Town of Winfield
WWTP

GIBSON ST

RANDOLPH ST

137TH AVE

145TH AVE

US 231

US 231

165