

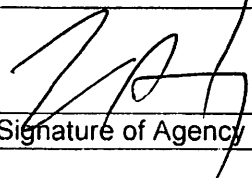
Attestation of Certified Day Program Operations in Accordance with OPWDD Interim Reopening of Day Services Guidance

Agency Legal Name	Battenkill Community Services, Inc.		
Agency Address	2549 State Route 40, Greenwich NY 12834		
Day Program Type	<input type="checkbox"/> Certified Site <input checked="" type="checkbox"/> Community, without Walls	<input checked="" type="checkbox"/> Day Habilitation <input type="checkbox"/> Day Treatment <input type="checkbox"/> Sheltered Workshop	<input type="checkbox"/> Prevocational <input type="checkbox"/> Respite
Operating Certificate Number	92380DH1		
Site Address (certified sites only)			
Certified Capacity (certified sites only)			
Primary Contact Name	Mark Flory		
Primary Contact Email and phone	maflory@battenkill.org; 518-692-2819		

The submission of this signed attestation and safety plan for the above program to quality@opwdd.ny.gov advises OPWDD of the agency's plan to resume operations at the day program in accordance with requirements as outlined in the guidance document *Interim Guidance Regarding the Reopening of Day Services Certified by the Office for People With Developmental Disabilities*.

The agency must attest to its ability to adhere to all requirements in the guidance as appropriate to the program, and to ensure ongoing compliance with the requirements upon opening.

Any attestation is a filing of a written document with a government agency and is enforceable against the signatory.

	8/28/2020
Signature of Agency CEO	Date
Mark A. Flory, Executive Director	
Printed Name of Agency CEO	

COVID-19 Safety Plan for Certified Day Program Reopening

Agency Legal Name		
Agency Address		
Day Program Type	<input type="checkbox"/> Certified Site <input type="checkbox"/> Community, without Walls	<input type="checkbox"/> Day Habilitation <input type="checkbox"/> Prevocational <input type="checkbox"/> Day Treatment <input type="checkbox"/> Respite <input type="checkbox"/> Sheltered Workshop
Anticipated Reopening Date		
Operating Certificate Number		
Site Address (certified sites only)		
Certified Capacity (certified sites only)		
Primary Contact Name		
Primary Contact Email and phone #		

The program's Safety Plan must describe procedures to operate the certified day program site or deliver day program service in accordance with the guidance document, Interim Guidance Regarding the Reopening of Day Services Certified by the Office for People With Developmental Disabilities. This document provides the outline to utilize for development of the Safety Plan (or future revision).

Some requirements may not be applicable to community-based services.

Please submit the written safety plan for each program to OPWDD prior to the reopening at quality@opwdd.ny.gov. In addition, for each safety plan, a completed Day Program Site Attestation must also be submitted. OPWDD will maintain copies of the plans for our records. OPWDD will not be providing approvals of agency plans.

Certified Sites must also maintain a copy of the program's Safety Plan on premises available to facility staff, OPWDD and local health authorities upon request. Community day program services (non-site based, without walls) must also make a copy of the Safety Plan available upon request.

SAFETY PLAN COMPONENTS

NOTE: Guidance bullets below are not a substitute for provider review and adherence to content of *Interim Guidance Regarding the Reopening of Day Services Certified by the Office for People With Developmental Disabilities*

Signage – applies to certified sites and other locations controlled by the provider

- Ensure program building entrances have signs that alert that non-essential visitors are not allowed.
- Ensure signs are posted throughout the program building to provide instruction on the critical COVID-19 transmission prevention and containment activities identified in the companion document *Interim Guidance Regarding the Reopening of Day Services Certified by the Office for People With Developmental Disabilities*.

Identify how you will ensure the above and any related strategies:

A. Entrance to Site Based Programs

Pre-Entry/Pre-Participation Screening:

- Screen all individuals, staff, and essential visitors prior to entry into the day program site and/or participation in services/service delivery:
 - per infection control standards for protection of screener and screened person,
 - to include temperature check and required questions on exposure and COVID-19 Symptoms, per NYS DOH and OPWDD guidance documents.
- Maintain daily documentation of all screening of individuals, staff and visitors in compliance with OPWDD and NYS guidance and policy.

Response to Signs and Symptoms and Departure:

- Safe management of any individual, staff or visitor who fails initial/pre-program screening or is exhibiting signs or symptoms during service delivery, to include:
 - Facilitating departure as soon as possible, and
 - Safely manage separation from people not exhibiting symptoms, until they depart.
- Ensure instruction is provided to any individual or staff sent home due to symptoms to contact their health care provider and written information on healthcare and testing resources.
- Ensure the day program immediately notifies the local health department and OPWDD about the suspected case.

Participation and Return to Program/Service:

- Ensure staff members know to report and how to report positive COVID-19 test results, exposure/possible exposure, and signs and symptoms to their supervisor.
- Ensure individuals do not participate in day services while they or a member of their household or certified residence is being quarantined or isolated.
- Maintain medical documentation allowing an individual or staff member who was COVID-19 positive to return to program site/services.
- Ensure any return of an individual or staff to programs/services occurs only in adherence to OPWDD and NYS DOH guidance regarding quarantine periods and fever free durations.

Identify how you will ensure the above and any related strategies:

B. Social Distancing Requirements:

Ensure effective practices to facilitate social distancing when distancing is not possible, including the following:

- Reduction of total number of individuals served at one time, in order to reduce congestion and facilitate easier social distancing;
- Plans to maintain no more than 50% occupancy in small/confined spaces within a program, such as a staff break room;
- Potential use of physical barriers within site-based spaces;
- Planned use, capacity and arrangement of furniture and/or work equipment in program rooms, workspaces and meal and seating areas to allow for social distancing of at least six feet apart in all directions (i.e. 36 square feet) and limit density. (Note an individual's needs may require individual to staff distance to be less than six feet);
- Use of signage and floor markers/distance markers denoting spaces of six feet throughout program area spaces, common spaces, waiting areas, entry, exits and other areas of travel;
- Facilitate one directional foot traffic where necessary in narrow spaces, using tape or signs with arrows;
- Install physical barriers, as appropriate, especially when physical distancing is not feasible between program/workspaces;
- Support and education of individuals to learn physical distancing/use of markers, patterns of movement, and other program strategies;
- Maintain a staffing plan to prevent employees who should need to "float" between different rooms or different groups of individuals, unless such rotation is necessary to safely support individuals due to unforeseen circumstances (e.g. staff absence).

- Provide adequate space and operational practices (e.g. staggered break times) for staff to adhere to social distancing while completing independent tasks (i.e. paperwork) and when taking breaks (i.e. eating or smoking).

Identify how you will ensure the above and any related strategies:

C. Gatherings in Enclosed Spaces

- Modifications to day program/service hours as needed, to allow blocks of service provision while maintaining reduced capacity and group size.
- Planned group size, which will be limited to no more than fifteen (15) individuals who receive services. The restriction on group size does not include employees/staff.
- Ensure the group (≤ 15) of individuals receiving services and staff working with them are as static as possible.
- Ensure that different stable groups individuals and staff, have no or minimal contact with one another and do not utilize common spaces at the same time, to the greatest extent possible.
- Stagger staff and/or individual meal and break times to maintain social distancing.
- Adhere to social/physical distancing practices identified in the safety plan.
- Prohibit shared food and beverages and buffet style dining.
- Require that food brought from home must require limited preparation (i.e. heating in microwave) during day services and be packed appropriately.
- Ensure reusable food utensils and storage containers are washed in the dishwasher on the hottest wash and dry setting.

Identify how you will ensure the above and any related strategies:

D. Day Program Schedules and Activities

- Modifications to day program/service hours as needed, to allow blocks of service provision while maintaining reduced capacity and group size.

- Focus on activities with little or no physical contact and which do not rely on shared equipment, to the extent possible.
- Schedule individual's activities to reduce density and allow for social distancing.

Identify how you will ensure the above and any related strategies:

E. Personal Protective Equipment:

- Ensure all staff wear an appropriate cloth or disposable face mask/covering that covers both the mouth and nose, at all times while providing services, consistent with all current Executive Orders and OPWDD guidelines (unless medically contraindicated / not tolerated).
- Ensure all essential visitors wear a face mask or covering, providing a facemask onsite at no cost, if visitors do not have their own which meets requirements.
- Support individuals receiving services to wear face coverings, as tolerated, whenever social distancing cannot be achieved.
- Maintain an adequate supply of required PPE on site (and available to staff for when needed for community-based services) to minimally include masks and gloves, and with gowns and face shields as needed.
- Train all staff on proper use of PPE including when necessary to use, donning, doffing, disposing and/or reusing and sanitizing when appropriate.
- Retain documentation of trainings in the employees' personnel files and per agency procedures.

Identify how you will ensure the above and any related strategies:

F. Hygiene and Cleaning

Personal Hygiene to Reduce Transmission:

- Ensure strict adherence to hygiene requirements to reduce transmission as advised by NYS DOH and the CDC.
- Provide and maintain hand hygiene stations at each location to include:
 - Handwashing: soap, running warm water, and disposable paper towels.
 - Hand sanitizing: alcohol-based hand sanitizer containing at least 60% alcohol for areas where handwashing facilities may not be available or practical, and where the need for frequent hand sanitizing is expected;
- Train staff to wash their hands frequently with soap and water for at least 20 seconds using techniques per NYS DOH and CDC guidance, including the conditions that require handwashing.
- Support individuals to wash their hands frequently/when needed, with soap and water, for at least 20 seconds using appropriate techniques as tolerated.
- Encourage and facilitate use of hand sanitizers by staff and individuals upon arrival to and departure from program and through the day, providing supervision/support of use by individuals as needed.
- Address any individualized needs affecting the unsupervised availability of hand sanitizer.

Cleaning and Disinfection of Environment, Equipment and Supplies:

- Strictly adhere to sanitation requirements as advised by NYS DOH guidance documents.
- Implement the following minimum standards regarding cleaning and sanitizing:
 - Frequent cleaning and rigorous disinfection of high-risk areas/high touch surfaces;
 - Use of only EPA registered products for disinfecting non-porous surfaces;
 - Adhere to proper dwell times for all cleaners, sanitizers and disinfectants per manufacturer recommendations as indicated on the product label; and
 - Ensure adequate ventilation to prevent inhaling toxic fumes.
 - Maintain site cleaning logs indicating the date, time, and scope of cleaning.
 - Keep cleaning products, sanitizers and disinfectants secure and out of reach of individuals who may misuse;
 - Safely and immediately discard used gloves, paper towels or other disposable items after sanitizing or disinfecting, tied in a trash bag and removed from the environment.
 - Clean and disinfect all areas and equipment used by a person exhibiting symptoms upon their departure from the area and prior to use of the area or equipment by other individuals or staff.
 - PPE use and hand hygiene when cleaning and disinfecting causes safety hazards.
 - Provide ventilation with outside air safely and when possible.
- Limit use of shared objects/equipment. Ensure shared items are cleaned and/or sanitized after each use. Require hand hygiene before/after contact and glove use when feasible.
- Prohibit use of items/objects that cannot be cleaned and sanitized (i.e. soft object, cloth placemats, etc.) unless clinically required.
- Prohibit bringing personal items from home, except when clinically necessary, then have a plan for regular cleaning and disinfection including immediately prior to departure.

Identify how you will ensure the above and any related strategies:

G. Transportation

Ensure that the following measures are implemented for the transport of individuals to/from day services to reduce COVID-19 transmission risk, when providing or contracting for transportation:

- **Ensure only individuals and staff traveling to and from the same day program be transported together; individuals or staff from other day programs should not be intermingled for purposes of transportation at this time; individuals transported together are encouraged to be cohorted for purposes for day programming also, in order to reduce further intermingling;**
- **Reduce capacity on buses, vans, and other vehicles transporting individuals from multiple residences to 50% of total capacity;**
- **Individuals and staff who reside/work together in the same home may be transported together to day program(s) in the same vehicle without a vehicle capacity reduction;**
- As possible, stagger arrival and departure times to reduce entry and exit density.
- **To the extent possible, restrict close contact of individuals and staff from different households by not sitting near each other or the driver.**
- If there are multiple doors in a bus or van, utilize one-way entering and exiting. Provide instruction for individuals to exit the vehicle one at a time and wait for driver or staff instruction before doing so.;
- **Ensure staff and the driver always wear face coverings in the vehicle. Social distancing must be maintained for individuals who cannot tolerate wearing a mask and, when possible, such individuals should be transported alone or with members of the same household. Ensure staff who cannot medically tolerate the use of a face covering are not assigned to transport individuals.**
- After each trip is completed, clean and disinfect the interior of the vehicle before additional individuals are transported; and
- Where appropriate and safe, roll windows down to permit air flow.

Identify how you will ensure the above and any related strategies:

H. Tracing and Tracking

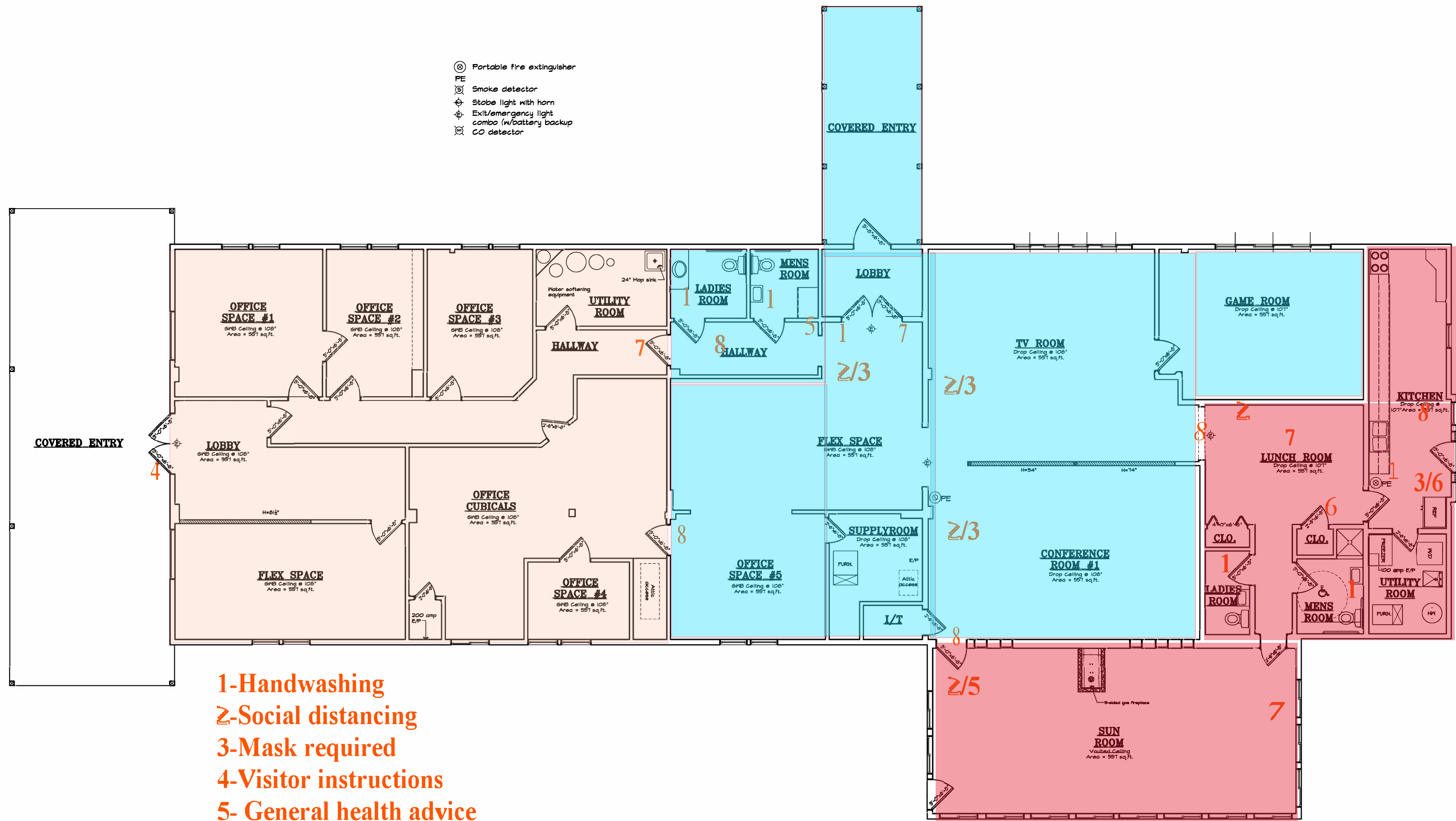
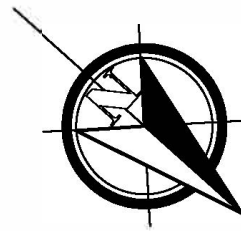
- Notify the local health department and OPWDD immediately upon being informed of any positive COVID-19 test result by an individual or staff at their site.
- If a staff or visitor test positive, procedures for day service cooperation with the local health department to trace all contacts in the workplace and notify the health department of all staff, individuals and visitors who entered the facility dating back to 48 hours before the positive person began experiencing COVID-19 symptoms or tested positive, maintaining confidentiality as required by federal and state law and regulations.

Identify how you will ensure the above and any related strategies:

ADDITIONAL SAFETY PLAN MEASURES:

Please use this space to provide additional details about your program's Safety Plan, if appropriate.

C:\AutoCad Drawings\Mark Flory\Battenkill Community Services\391-20 Cexstflrpln.dwg Feb 10, 2020 - 6:47am



- 1-Handwashing
- 2-Social distancing
- 3-Mask required
- 4-Visitor instructions
- 5- General health advice
- 6- Germs info
- 7- Stand here
- 8-Do not enter

EXISTING FLOOR PLAN: BATTENKILL COMMUNITY SERVICES, INC.
SCALE: $\frac{3}{8}" = 1'-0"$

NOTES:

- DO NOT SCALE DRAWING.
- VERIFY ALL DIMENSIONS PRIOR TO CONSTRUCTION. NOTIFY OWNER OF ANY DISCREPANCIES.
- OWNER & CONTRACTOR SHALL CONSULT APPLICABLE BUILDING CODES TO ENSURE THE INFORMATION ON THIS DRAWING COMPLIES TO ALL REQUIREMENTS. THESE PLANS AND SPECIFICATIONS ARE IN COMPLIANCE WITH CHAPTER 11 (ENERGY EFFICIENCY) OF THE 2015 INTERNATIONAL BUILDING CODE.
- ALL PLUMBING FIXTURES, DRAINS, APPURTENANCES AND APPLIANCES USED TO SERVICE OR DISCHARGE LIQUID WASTES OR SPICES SHALL BE DIRECTLY CONNECTED TO THE DRAINAGE SYSTEM OF THE BUILDING OR PREMISES, IN ACCORDANCE WITH THE REQUIREMENTS OF THE 2015 INTERNATIONAL BUILDING CODE.
- EVERY PLUMBING FIXTURE, DEVICE OR APPLIANCE REQUIRING OR USING WATER FOR ITS PROPER OPERATION SHALL BE DIRECTLY OR INDIRECTLY CONNECTED TO THE WATER SUPPLY SYSTEM IN ACCORDANCE WITH THE 2015 INTERNATIONAL BUILDING CODE.
- THE PLUMBING SYSTEM SHALL BE PROVIDED WITH A SYSTEM OF VENT PIPING THAT WILL ALLOW THE ADMISION OR EMISSION OF AIR SO THAT THE LIQUID SEAL OF ANY FIXTURE TRAP SHALL NOT BE SUBJECTED TO PRESSURE DIFFERENTIAL OF MORE THAN 1 INCH OF WATER COLUMN. IN ACCORDANCE WITH THE 2015 INTERNATIONAL BUILDING CODE.
- ALL ELECTRICAL SYSTEMS SHALL BE INSTALLED IN ACCORDANCE WITH THE 2015 INTERNATIONAL BUILDING CODE.
- DESIGN LOADS:
 - 1st FLOOR: 100 PSF LIVE
 - PLATFORMS: 100 PSF LIVE
 - SNOW LOADS: 15 PSF DEAD
 - ROOF LOAD: 60 PSF LIVE (GROUND SNOW LOADING)
 - WIND SPEED: 115 MPH, 3 SECOND GUST
 - SEISMIC DESIGN CATEGORY: B
 - PRESUMPTIVE SOIL LOAD BEARING: 2,000 PSF
 - SOIL GROUP: GROUP 1
- HANDRAILS SHALL BE PROVIDED ON AT LEAST ONE SIDE OF EACH STAIRWAY WITH TWO OR MORE RISERS. HANDRAIL HEIGHT SHALL BE 34" MINIMUM AND 38" MAXIMUM AS MEASURED ABOVE STAIRTREAD NOSING.
- ALL SMOKE DETECTORS SHALL BE INSTALLED PER LOCAL CODES AND NATIONAL ELECTRICAL CODE STANDARDS. THIS SHALL INSURE THAT ALL DETECTORS BE HARDWIRED SUCH THAT IF ONE DETECTOR ALARMS, THEY ALL ALARM.
- FIRE DOORS SHALL CONFORM TO NFPA 80 - 2016
- INTERIOR WALLS, FLOORS & CEILING FINISHES SHALL CONFORM TO ASTM F84 OR UL 723. SUCH INTERIOR FINISHES SHALL HAVE A CLASS B FLAME SPREAD RATING OR HAVE A FLAME SPREAD INDEX OF 26-75, & SMOKE DEVELOPED INDEX OF 0-450.
- PORTABLE FIRE EXTINGUISHERS SHALL BE INSTALL ON EXTERIOR FRONT & BACK WALLS AS SHOWN. FIRE EXTINGUISHERS SHALL BE LOCATED NO MORE THAN 75 FEET APART. TYPE 2A: 10-B-C DRY CHEMICAL, 5 LB WITH WALL BRACKET.
- SMOKE ALARMS SHALL BE INSTALLED IN EACH UNIT AS SHOWN ON DRAWINGS.
- ACCESSIBLE BATHROOM CEILING HORN-STROBE LIGHTS SHALL MEET OR EXCEED UL-C-5541, YEAR 2004 UL REQUIREMENTS FOR STANDARDS UL1480 AND UL1971, AND COMPLY WITH UL1480. ALL HORN-STROBES SHALL COMPLY WITH ADA CODE OF FEDERAL REGULATION CHAPTER 38 PART 36 FINAL RULE, CSFM, MSA, FM APPROVED.

Saratoga Engineering & Design

Residential/Commercial Design Plans

Douglas W. Adams
Professional Engineer & Designer
Call (518) 653-6899

74 Rolling Hills Drive
Greenwood, New York 12831
email: saratogadesign@coxnet.net

BATTENKILL COMMUNITY SERVICES, INC.
2549 ROUTE 40
GREENWICH, NEW YORK 12834
(518)692-2819

OFFICE REMODEL

DRAWN BY: DWA SCALE: AS NOTED DATE:
DWG. FILE:

EXISTING FLOOR PLAN

SHEET 2 OF 5

WHEN THIS ITEM IS STAMPED BY A LICENSED PROFESSIONAL ENGINEER, IT IS A VIOLATION OF THE NEW YORK STATE EDUCATION LAW TITLE VII ARTICLE 145 SECTION 7208 FOR ANY PERSON UNLESS HE IS UNDER THE DIRECTION OF A LICENSED ENGINEER TO ALTER AN ITEM IN ANY WAY. IF AN ITEM BEARING THE SEAL OF AN ENGINEER IS ALTERED, THE ALTERING ENGINEER SHALL COMPLY WITH NEW YORK STATE EDUCATION LAW.