



# Clearwater's Conservation Chronicles



Photo by: Brielle Prokosch

## IN THIS ISSUE:

- |                            |        |
|----------------------------|--------|
| 1. Free Pollinator Seed    | Page 2 |
| 2. 2022 Tree Sale          |        |
| <hr/>                      |        |
| 1. Water Planning          | Page 3 |
| <hr/>                      |        |
| 1. Custom Services Flyer   | Page 4 |
| <hr/>                      |        |
| 1. Thank you Flyer         | Page 5 |
| 2. Volunteers Needed Flyer |        |
| <hr/>                      |        |
| 1. Equipment Rental Flyer  | Page 6 |
| <hr/>                      |        |
| 1. Rain Gauge              | Page 7 |
| <hr/>                      |        |
| 1. Puzzle Page             | Page 8 |

## District Staff

Lori Buell  
District Manager  
Lori.Buell@mn.nacdnet.net

Chester Powell  
Water Plan Coordinator/  
Program Technician  
Chester.Powell@mn.nacdnet.net

Brielle Prokosch  
Program Technician  
Brielle.Prokosch@mn.nacdnet.net

Kaleb Buesing  
Seasonal District Technician  
ClearwaterSWCD1954@gmail.com



## Free Pollinator Seed!

### Be a Friend to Pollinators

The US Fish and Wildlife Service has made a generous donation to the Clearwater SWCD this past autumn. Clearwater SWCD has received enough pollinator seed to restore a native prairie landscape on 11 acres of land. There will be 22 half-acre allotments made available to residents of Clearwater county starting in the spring of 2022.

It is a rich seed mix containing 20 forb (flowering) species and 6 grass species. Stunning purple forbs such as Dotted, Rough and Tall Blazing Star, along with Sky-blue Aster, Purple Prairie Clover, and Anise Hyssop are the stars of this mix. Grasses such as Little Bluestem, Indian Grass, and Side-oats Grama are an extra bonus in creating a landscape that is not only visually appealing, but also attractive for wildlife too.

To successfully establish your new prairie landscape, you need to prepare a clean seed bed. An ideal seed bed consists of a uniform surface, has optimal soil moisture and is free from competing vegetation. After a seed bed is prepped, the planting can begin. Seeding can be accomplished by hand or with a mechanical broadcast seeder. In large plantings a no-till drill is an effective, low labor alternative to broadcast seeding (check out our broadcast seeding services and no-till drill rentals!). Preparation activities will vary based on planting size and location. Contact Kaleb Buesing at the office for any inquiries about the free seed that will be available this spring, and tips to prepare a quality seed bed!

# 2022 Tree Sale!

## And Flowers and Grasses!

Once again, it's time to think about ordering trees! Each year we sell a variety of native conifers, shrubs, fruiting and deciduous trees. We also offer Orchard, Bird & Grouse and Jam & Jelly packs for a larger variety. Our bare root trees are typically 1-2 feet in height and are locally grown in Minnesota and North Dakota. Most of our species come in bundles of 25 and range from \$15 to \$33 per bundle. We cannot sell bundles of less than 25 trees, unless already noted on the form. The deadline to turn in your tree order form is any time before the first day of tree pick-up.

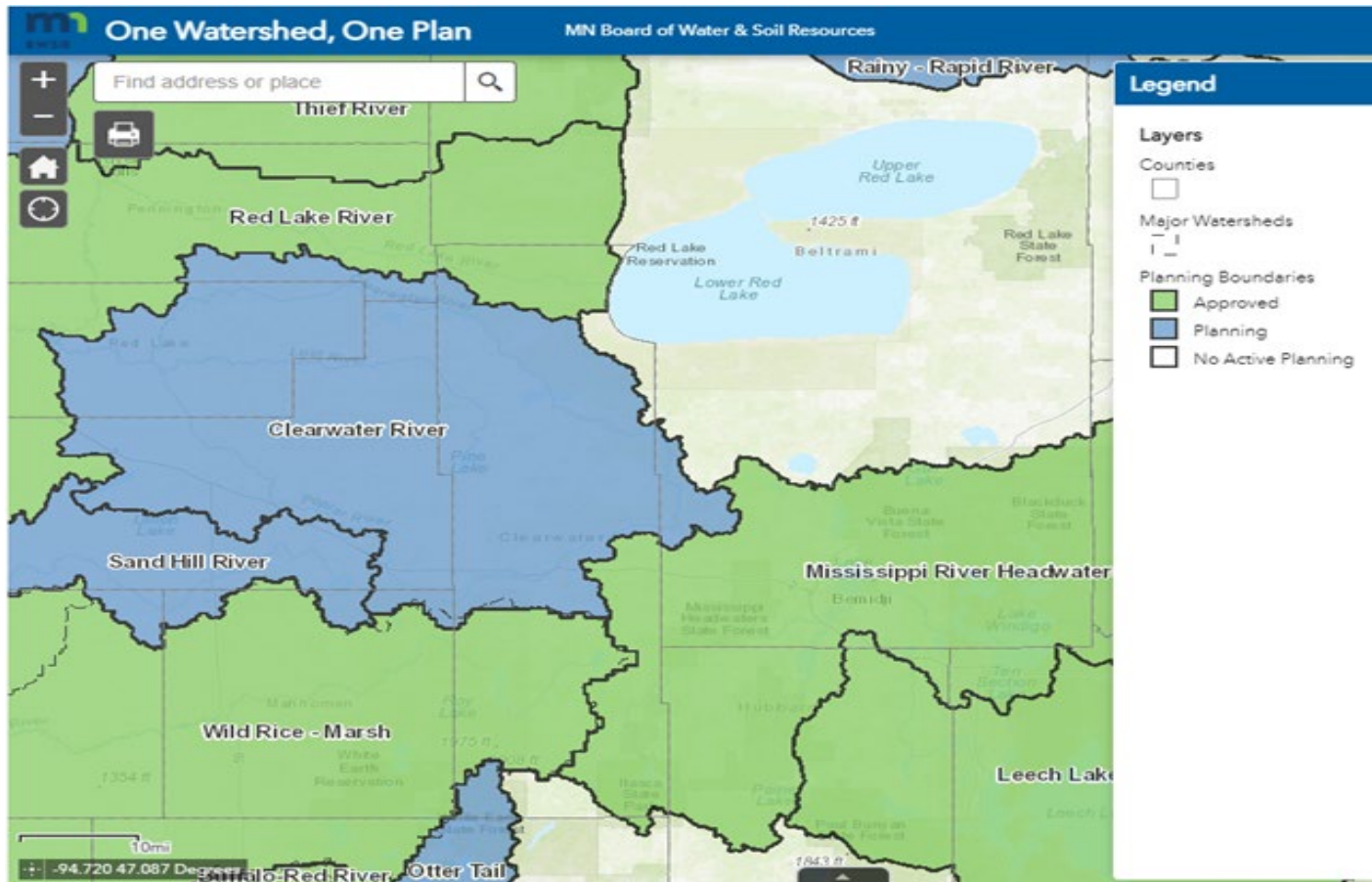


This year we are also selling flowers and grasses! We are offering a variety of Minnesota native flowers and grasses. We will be selling by packs of 6 plugs or by single 4-inch pots. The 6-packs will be \$8 and the pots will be \$3.25. Please be aware that the deadline to turn in your flower and grass form is April 1<sup>st</sup> (and that's no joke!).

We will start accepting order forms January 2022. Please mail in or visit the office to drop off your order form. A check (preferred method) or cash value of your total amount is expected with your order form. Clearwater SWCD does not accept credit cards. Be sure to provide your email *and* phone number so that we may inform you of any changes. Notifications that tree pick-up dates are nearing are exclusively sent by email.

Please remember that all our trees, flowers and grasses are first come, first serve. If you think we will sell out of a specific species, and we do sell out frequently, turn in your order form and payment ASAP. You can always check our website at [www.clearwaterswcd.com/annual-tree-sale](http://www.clearwaterswcd.com/annual-tree-sale) for updates. We typically announce that certain species are sold out on the PDF order form daily. If you have a large order or are purchasing trees or flowers to use in a program, it may be easier to give us a call at (218) 694-6845 ext. 4 to make sure all your needed plants are available.

We've enjoyed the smoothness of our pick-ups by car so much that we will continue to do so! Staying in your vehicle during tree pick-up time lets you quickly grab your plants and continue with your day. Stay tuned to our Facebook page for updates regarding our sale season. As always please feel free to give our office a call for any questions, concerns or planting tips!



# Water Planning in Clearwater County

## One Watershed, One Plan

Beginning in 2018 Clearwater County and SWCD entered the new water planning process aptly named One Watershed One Plan. For the past three years Clearwater SWCD has led as the planning partner in the three major watersheds that make up Clearwater County. The Wild Rice, Mississippi Headwaters, and the Clearwater River Watersheds make up the vast majority of Clearwater County and are the three plans that will subsequently replace Clearwater Counties county waterplan state requirement. By the end on calendar year 2021, two the of the three plans will have been completed and in or onto the implementation stages with the final Clearwater River plan is

projected to be completed mid to late summer 2022. The Wild Rice plan was approved for implementation at the end of 2020 and the Mississippi Headwaters approved earlier this fall.

The completion of these plans is the result of a cooperative effort by all involved SWCD, County, and Watershed Districts working together for the common goal of water quality improvement. Once a plan is completed and approved by the Board of Soil and Water Resources (BWSR). A predetermined set of funding in allocated to that planning region on a biennial basis. These funds are used to implement water quality projects and practices in that watershed that were identified in the plans. The One Watershed One Plan process is allowing your local SWCD, County and Watershed Districts to better assist landowners in the implementation of clean water projects throughout our counties and watersheds.

For more information regarding the One Watershed One Plan process please refer to the BWSR One Watershed One Plan website at <https://bwsr.state.mn.us/one-watershed-one-plan>.

# Annual Flyers: Pages 4, 5 & 6

## We now offer Custom Services!

### Tree Planting:

Staff will plant by hand or by machine. Landowner must provide tractor for machine.



### 48" Brush

**Mowing:** Staff will mow tall brush with provided ATV and mower.



### Broadcast

**Seeding:** Staff will broadcast seed with provided seeder and ATV.



Give us a call to learn more!



# Thank You

*To all our wonderful volunteers and local partners:  
we are sincerely grateful for your support!  
Thank you for another fantastic year!*

## Volunteers Wanted!

Help keep our lakes healthy by  
volunteering!

Clearwater SWCD is looking for reliable citizens to help us evaluate the health of our county's lakes that we all enjoy! Volunteers would take a water sample of given lake 5 times a year during the months of June through September. If you or someone you know lives on or near the following lakes and are interested in helping us gather vital data, please contact Brielle Prokosch at the office for more information! We'd love your help next summer!

- 💧 Bagley      💧 Big LaSalle      💧 Falk
- 💧 Johnson      💧 Lone      💧 Minerva
- 💧 Moose      💧 Minnow

**We've got the tools and expertise you need for your property management activities!**

**Tree planters for windbreaks or large wildlife plantings!**



**No-till Drill to interseed pastures or plant cover crops, pollinator seeds and much more!**

**Aerator for breaking up sod layers & increasing infiltration!**



**Ag Spray Sprayer to spray herbicide on unwanted plants or to prep the fields!**

**Call us today to learn about our 2022 cost share incentives or rental equipment!**

# Clearwater County Rain Gauge

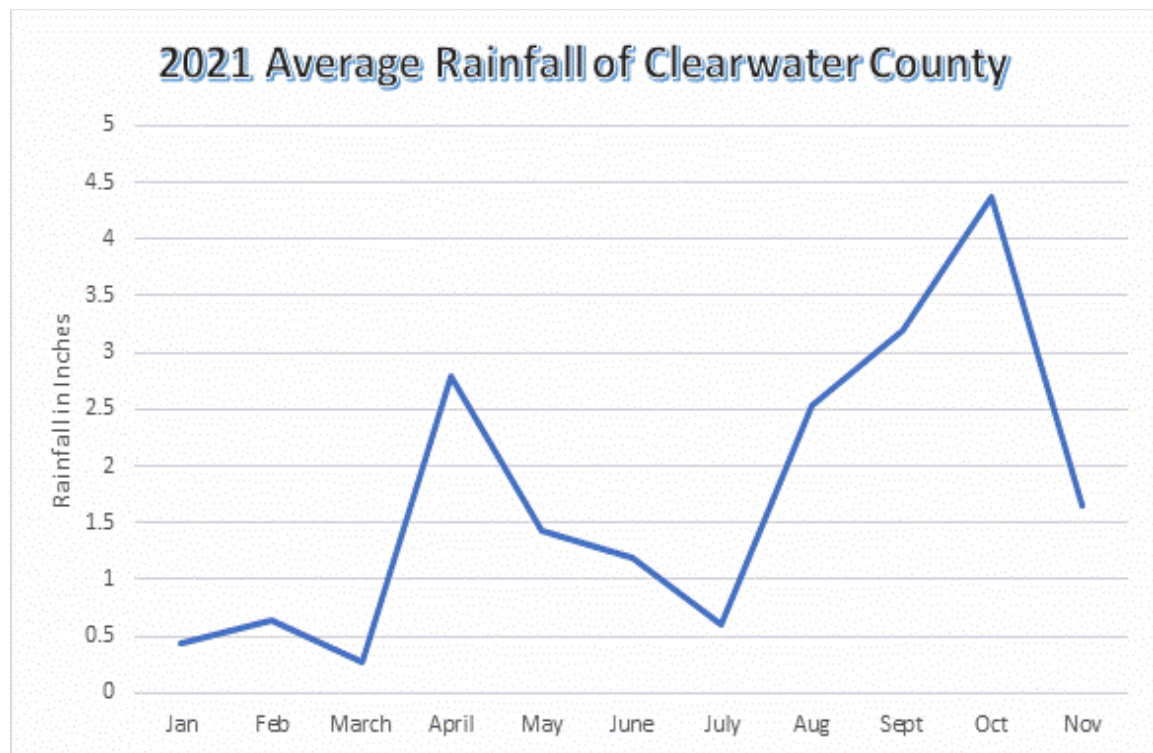
## A look at the 2021 drought

While 2019 has been noted as one of the the wettest years on record, 2021 had parts of Minnesota experiencing the worst drought in almost 40 years.

Though April had average rainfall, between the low amount of rain and above normal temperatures, dry conditions continued throughout the summer. June in particular brought abnormally high temperatures. By August the Northern half of Clearwater County was in a severe D4 drought (with the Southern half in a D3). It was the first time in the 21 years of drought monitoring a drought had become so severe. Luckily, a two-week rain period in late August helped slow down the intensity of the drought and October even finished the month wetter than normal. December 5<sup>th</sup> held the first major snowstorm of the season with snow falling in double digits in some parts of the county, yet the county is still considered dry as of December 20<sup>th</sup>.

Clearwater SWCD, along with local volunteers, have been working with the Minnesota Climatology Network to gather rainfall data since 1978. We currently have volunteers collecting rainfall data in Copley, Eddy, Falk, Greenwood, Itasca, Minerva, Moose Creek, Pine Lake, Popple, and Rice townships.

## Clearwater County Rain fall from Jan to Nov 2021:



# ✱ Clearwater's Puzzle Page! ✱

This newsletter's event: **Word Ladders!**

In word ladders you attempt to reach the ending word by changing one letter at a time. Each step must be a word found in the dictionary. The starting and ending words are based on our programs!

A word ladder with five rungs. The top rung contains the word "r y e". The bottom rung contains the word "o a t". The three middle rungs are empty boxes for letters. To the right of the ladder are five text boxes, each connected to a rung by a horizontal line.

Ending word, you did it!

Edible egg masses of fish and marine animals

To decay or decompose due to bacteria or fungus

A long-tailed rodent

Start here to climb the ladder!

A word ladder with five rungs. The top rung contains the word "r a i n". The bottom rung contains the word "w e l l". The three middle rungs are empty boxes for letters. To the right of the ladder are three text boxes, each connected to a rung by a horizontal line.

A wagon, usually pulled by horses

A high-pitched cry of grief or anger

A vertical structure forms that side of a room

A word ladder with five rungs. The top rung contains the word "s o i l". The bottom rung contains the word "f a i r". The three middle rungs are empty boxes for letters.

**Challenge:**  
Can you solve these two without any clues?  
↔

A word ladder with five rungs. The top rung contains the word "s e e d". The bottom rung contains the word "t r e e". The three middle rungs are empty boxes for letters.



POSTAGE



# CLEARWATER

Soil & Water Conservation District

312 Main Ave N, Suite 3  
Bagley, MN 56621

 Find us on  
Facebook



# CLEARWATER

Soil & Water Conservation District

Visit Our Website



## Mission:

Our mission is simple - to promote the wise use and improvement of our county resources, in order that future generations will inherit an economically viable county that has made wise choices in resource management.

**312 Main Ave North Suite 3, Bagley, MN 56621**  
**218-694-6845 ext 4 | [www.ClearwaterSWCD.com](http://www.ClearwaterSWCD.com)**