

Santa Fe

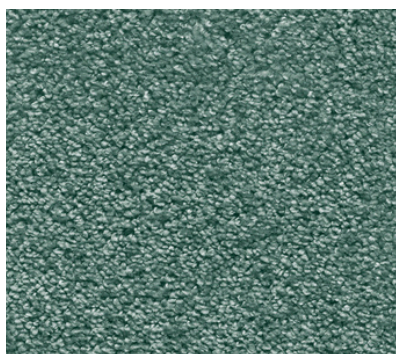
Broadloom Carpet Collection



SANTA FE



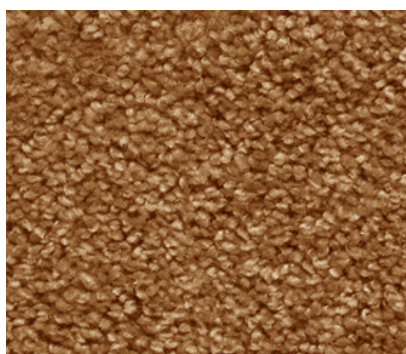
03 - NOUGAT



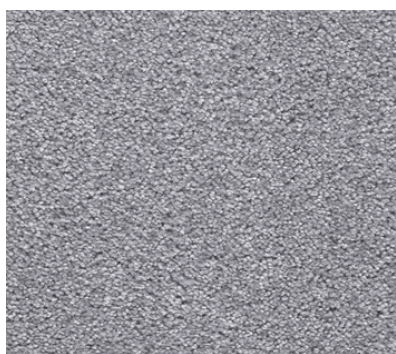
24 - AQUARIUS



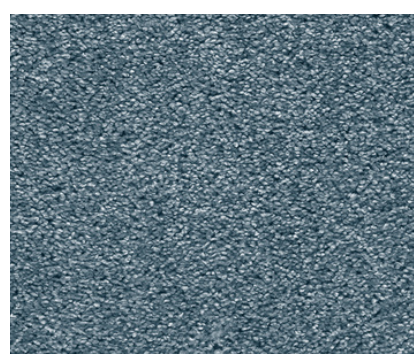
60 - CORAL



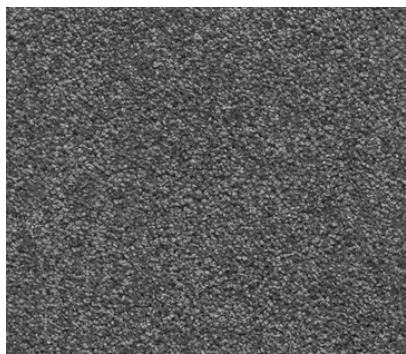
80 - ARGAN



92 - GRANITE



74 - CASPIAN



97 - BASALT



98 - EBONY



33 - SAND



42 - SIENNA



MY FLOOR Carpets - The Ultimate Comfort and Style Choice

Our carpet combines comfort, style, and practicality, making it an excellent choice for any space. Its ability to enhance aesthetic appeal, provide insulation, reduce noise, and offer a safe and durable surface makes it a valuable investment. Whether you're renovating a single room or an entire home, wall-to-wall carpet can transform your space into a cozy, stylish, and functional area that everyone will enjoy.

Unmatched Comfort - Aesthetic Versatility - Noise Reduction - Insulation and Energy Efficiency - Safety and Durability - Easy Maintenance

SPECIFICATIONS	
Pile Composition	100% Solution Dyed Olefin
Backing	Comfortex Plus Feltbac
Weight	4.00 mtr
Pile Weight	800 gm ²
Total Weight	1670 g/m ²
Pile Height	9 mm
Standard Roll Size	25.00mtr x 4.00mtr

APPLICATION

Domestic Use - Intensive
Commercial Use - Light

BACKING

Comfortex Plus Feltbac is a dense fabric made of entangled textile fibres. When used as a carpet backing it improves heat and noise insulation and wear-resistance of carpet. It is comfortable to walk on and requires no underlay.

SUITABILITY

- Bedroom
- Guest Room
- Living, Dining
- Hobby Room
- Study
- Entrance
- Hallway & Stairs

The subfloor should be dry, smooth, flat, dust-free and resistant to compression and load-bearing. The seams may remain visible to the eye and this should be accepted as an inherent characteristic of carpet. Due to dye lot variations, actual colour may vary slightly from the samples. Chair pads are recommended to prevent premature wear of carpet.



Anti Slip



Fire Resistant



Wear Resistant



Fade Resistant



Sound Absorption



Anti Static



COMFORTEX PLUS

