



WIMBERLEY

Montessori

SCHOOL

Parent Handbook

2023 – 2024

Revised September 2023

45 La Buena Vista Drive
Wimberley, TX 78676

(512) 847-6055

Table of Contents

Welcome!	4
History	4
Our Goal	4
What is Montessori?	4
Organization	4
Major Elements of the Montessori Method	5
Curriculum	5
Caterpillar Program (ages 20 months through 36 months)	6
Primary Program (ages 3 through 6)	6
Early Elementary Program (ages 6 through 9)	6
Upper Elementary/Middle School Program (ages 9 through 12)	6
Work options include:	6
School Months of Operation: End of August thru End of May	7
School Hours:	7
Arrival	7
Drop Off Times:	7
Late Arrival Procedures Primary & Lower & Upper Elementary:	7
Late Arrival for Appointments:	7
Late Arrival for Support Services:	7
Pick-up	7
Procedures for Drop-Off and Pick-Up	8
Afternoon Enrichment Fee after 2:45 for Caterpillar, 3:00 for Primary, and 3:15 for Elementary classes	8
Late Pick-Up after 4:30 for Caterpillar and 5:00 for other classes	9
Release of Children	9
Tuition	9
Changes in Policies or Procedures:	9
State Minimum Standards	9
Grievances:	9

The enrollment contract included in this handbook states: 10

Two Week Trial Period for New Students..... 10

Students Requiring Extra Supervision 10

Inclement Weather 10

Emergency Preparedness Plan..... 10

Emergency Evacuation 10

Gang –Free Zone 11

Health Policy 11

Immunizations: 11

Vision and Hearing:..... 12

Medication Policy: 12

Medical Emergencies..... 12

Lice..... 12

Hand Foot and Mouth Disease 13

Child Abuse 13

Guided Tours/Observations 14

Guidelines for Observation..... 14

Conferences 14

Parental Participation 14

Field Trip Drivers 15

Discipline 15

Expulsion 16

Lunches..... 16

Clothing..... 16

Bringing Items to School 17

Birthdays..... 17

Toy Days 17

Pets 17

Holidays and Staff Development Days 18

Welcome!

We are delighted that you and your child are a part of the Wimberley Montessori family. This handbook has been developed to help you understand our policies and procedures, to facilitate good communication, and to help you feel more at home at Wimberley Montessori. We are dedicated to making your child's education a happy and positive experience.

History

Wimberley Montessori School has served the Wimberley community since 2004.

Our Goal

At Wimberley Montessori School, our goal is for each child to become an independent, self-reliant person with the skills necessary to achieve their own goals, with the ability to make a positive contribution to society, and with an awareness of the interrelated nature of all life. To achieve this goal, we base our educational approach on the developmental philosophy and educational methods of Dr. Maria Montessori.

What is Montessori?

Maria Montessori was a philosopher and educator. She was also Italy's first female physician. In her research, Dr. Montessori noted specific characteristics associated with a child's interests and abilities at each level of development. She believed that a school carefully designed to meet the needs and interests of the child would be effective if it were consistent with the basic principles of psychology. Rather than fight the laws of nature, Montessori suggested that we "follow the child," allowing her to show us how best to foster the development of her human potential.

Dr. Montessori observed children's remarkable, almost effortless ability to absorb knowledge from their surroundings and essentially teach themselves. This simple and profound truth inspired her pursuit of educational reform, curriculum development, methodology, psychology, teaching, and teacher training.

The Montessori method is based on observed tendencies in children:

- to explore and manipulate objects in the environment
- to repeat an activity until movement is perfected
- to develop an inner sense of order from the existing environment
- to choose their own activities
- to adapt to their native culture by imitating activities observed in their household
- to learn, almost effortlessly, when they choose an activity in which they are truly interested

The Montessori classroom is commonly referred to as a "prepared environment." This term reflects the importance of creating a learning environment which reinforces the child's natural curiosity, independence, and intellectual development. An important element in this prepared environment is the use of special Montessori materials. Based on her studies of children's learning, Dr. Montessori noted that most children do not learn from memorizing what they hear from their teachers or read in a book, but from concrete experience and direct interaction with their environment. Montessori materials are designed to facilitate concrete learning in every area of the curriculum.

Organization

Montessori classrooms are designed to encompass a three-year age span, allowing younger students to learn from older role models and older students to test and reinforce their knowledge by helping their younger classmates. Working in one class for three years, children are able to develop a strong sense of community with classmates and teachers.

Major Elements of the Montessori Method

Adapted and quoted from: The Montessori Method: A Revolution in Education, E.M. Standing, The Academy Library Guild, 1962.

- It can be applied universally. Children benefit from this method regardless of their racial, cultural, or economic backgrounds.
- It is based on a child's need to learn by doing. The teachers provide activities that correspond to each child's stage of development. The child successfully masters the skills of each stage before he moves on to the next.
- It does not try to create discipline within a child by means of rewards and punishments. Rather, it encourages the child to develop their own sense of internal discipline through their work. This discipline originates from within the child and is therefore more effective than discipline imposed from without.
- It offers children the freedom to choose spontaneously their physical and mental tasks for the day. Nevertheless, they reach the same or even higher levels of scholastic achievement as children in more traditional systems.
- It is based on a deep respect for a child's unique personality and limits the undue influence of adults. As a result, the child has the "room to grow in biological independence." She "is allowed a large measure of liberty (not license) which forms the basis of real discipline."
- "It enables the teacher to deal with each child individually in each subject, and thus guide them according to their individual requirements."
- It allows each child to work at their own pace. The children who work at a quicker pace are not held back; the children who work at a slower pace are not pressured.
- It does away with competition as a motivation for learning; and, "at every turn it presents endless opportunities among the children for mutual help – which is joyfully given and gratefully received."
- "...the Montessori method develops the whole personality of the child, not merely their intellectual faculties but also their powers of deliberation, initiative and independent choice, with their emotional complements. By living as a free member of a real social community, the child is trained in those fundamental social qualities which form the basis of good citizenship."

Curriculum

The Montessori curriculum is organized into a mosaic of integrated studies, in contrast with the traditional model in which the curriculum is compartmentalized into separate subjects which are treated discreetly. Our course of study implements a thematic approach that ties the various disciplines of the curriculum together into studies of the physical universe, the natural world, and the human experience.

Caterpillar Program (ages 20 months through 36 months)

Our youngest children are developing motor coordination, independence, and language in our peaceful Caterpillar room. This special setting is designed to be an extension of home with soft lighting, natural materials, and loving Guides. The children spend their days working on developmentally appropriate and stimulating activities at their own pace. “The education of even a small child, therefore, does not aim at preparing them for school, but for Life” – Maria Montessori

Primary Program (ages 3 through 6)

Maria Montessori used the term “absorbent mind” to characterize the miraculous learning that occurs during the primary years. Never again will the human mind so effortlessly take in what surrounds it.

The environment in the classroom is set up to captivate the child’s interest during their “sensitive periods” for touch, order, movement, language, and math. Most of the work is individual and self-correcting, inviting repetition. Three focal points are: care of self, care of environment, and care of others. The children enjoy freedom within well-defined limits. In short, the primary curriculum is designed to respond to the universal cry of the young child: “Help me to help myself.”

Early Elementary Program (ages 6 through 9)

Elementary children are eager to explore and understand the world around them, both visible and invisible. To meet their needs, we strive to “give them the universe” through Montessori’s “cosmic curriculum.” This curriculum first focuses on giving a vision of the universe as a whole. Then, it develops a perspective of its components and their relationships to each other. We use lessons, stories, and experiments to spark the children’s imaginations about the creation of the universe, the evolution of life on earth, and the basic needs of people.

Upper Elementary/Middle School Program (ages 9 through 12)

Our Upper Elementary program provides a classroom environment containing a wide variety of activities and work options in the arts, botany, geometry, history, language arts, mathematics, and zoology.

Work options include:

Research and presentation of findings	Community outreach and support
Hands-on experiments	Drawing and painting
Group problem solving activities	Music
Creative writing	Spanish
Manipulation of concrete skill-building materials	Educational computer usage

Students develop responsibility for their learning through a weekly goal setting and assessment process. The classroom environment is maintained by the children through shared job responsibilities. Students are encouraged to share their expertise with others both in the classroom and throughout their community. By creating a classroom environment offering a wide variety of self-selected work options and entrusting the children with responsibility for their learning, we truly “follow the child” in their quest for knowledge.

School Months of Operation: End of August thru End of May

School Hours:

Caterpillar 8:30am to 2:30pm (1/2 days end at 11:30am)

Primary 8:00am to 2:45pm (1/2 days end at 11:30am)

Elementary 8:00 am to 3:00 pm

Afternoon Enrichment – Caterpillar 2:45-4:30 pm, Primary 3:00-5:00 pm, Elementary 3:15-5:00 pm

Arrival

When any child is brought to school, they must be left in the presence of a staff member.

Drop Off Times:

- Caterpillar: 8:30am – 9:00 am – Caterpillar students ***may not*** be dropped off before 8:30 am
- Primary, Lower & Upper Elementary: 8:00am-8:30am

Late Arrival Procedures Primary & Lower & Upper Elementary:

We have found that children who arrive late typically have a hard time transitioning into the flow of the classroom and engaging with materials. Arriving late is also disruptive to the other children in the classroom community. It pulls teachers away from lessons with other children. Children thrive with a consistent on-time schedule in which they are able to start their day with the rest of their classmates. This allows us to honor the child by giving them the uninterrupted work cycle so important in a Montessori classroom.

If you need to drop your child off after 8:30am, please wait until 11:30am or the following day. If dropping off at 11:30am, please notify your child's teacher or call the school on (512)847-6055 as soon as possible,

Late Arrival for Appointments:

If your child requires an appointment, please contact your child's teacher well in advance to coordinate a schedule that best supports your child and the rest of the classroom community.

Late Arrival for Support Services:

If your child has regular appointments for support services (such as occupational therapy or speech), please contact your child's teacher to coordinate a schedule that best supports your child and the rest of the classroom community.

Pick-up

Your child needs to be picked up no later than 2:45 pm for Caterpillar, 3:00 pm for Primary, and 3:15 for Elementary classes. Any children not picked up by these timeframes will automatically be moved to the Afternoon Enrichment Program with a \$15 daily fee.

Procedures for Drop-Off and Pick-Up

The following procedures are designed to provide a safe and efficient drop-off and pick-up experience for our families. School car lines are notoriously slow. Please take a deep breath and use that time to connect with your child before saying goodbye for the day.

Please be mindful of the following guidelines and make sure that anyone else that picks up your child is aware of these procedures.

- Please pull into the driveway SLOWLY – we prefer safety over promptness.
- NEVER EVER pull around the car in front of you. There is only one lane of traffic. We feel that children and staff safety is in jeopardy when people try to pass - no matter how slowly. We load and unload from both sides of the vehicles.
- Our driveway is one-way only – ENTER at the bottom where staff parking is located and EXIT at the top by Anne's office.
- When you enter the driveway proceed all the way to the large orange cone and put your car in Park.
- We will unload your child. Parents must remain in the car.
- Please ensure that your child's belongings are in the floorboard and that their shoes are on prior to entering the parking lot. They will get out of the vehicle and turn around to gather their belongings.
- The children will then walk down to the outdoor sink to wash their hands. Primary children will be escorted to the sink until they are ready to go on their own.
- If your child is really struggling, we may ask you to pull over and park in order to keep the carline moving.
- At pick-up please consider NOT being on your phone in order to be fully present when you see your child after a long school day. They miss you all day and are eager to see your eyes and smiles.
- Please make sure that you are aware of the late arrival procedures for Primary and Elementary students on the previous page – if you arrive later than 8:30 am your next drop-off opportunity is 11:30 am.

Afternoon Enrichment Fee after 2:45 for Caterpillar, 3:00 for Primary, and 3:15 for Elementary classes

Your child will automatically move into our aftercare program if not picked up by the timeframes above, with a \$15.00 daily fee due. Afternoon enrichment fees are due on the first of the month following the child's attendance and is payable to Wimberley Montessori School.

Late Pick-Up after 4:30 for Caterpillar and 5:00 for other classes

You will be assessed a \$1.00 per minute fee for habitual late pickup. The late pickup fee must be paid to the aftercare attendant on that day.

Release of Children

Children will be released only to parents or authorized representatives. You are asked to provide names and Texas driver's license numbers and/or phone numbers for those people who are authorized to pick up your child or children. We will ask to see a photo ID if we are unfamiliar with the person picking up your child or if your child does not recognize the person.

Tuition

Tuition is payable in one annual payment or 10 equal installment payments due on the first day of each month. Upon enrollment in the spring, the annual enrollment fee is required. Please note that if you elect to pay tuition using the installment plan the annual tuition due is divided into 10 equal installment payments due in each of the months of August through May. It is important to note that installment payments are due in both August and September each year even though school starts late in the month of August.

The Parent is contractually liable for paying the annual tuition **in its entirety** for the term of the contract. Should the student withdraw from the class, the Parent will continue paying installments until a qualified replacement is enrolled in the class and has assumed payment of the remaining tuition. If a replacement is not found, the Parent is responsible for paying the tuition in full. ***If a student is withdrawn in the last 3 months of the school year, the school will not be able to find a replacement and any remaining tuition shall be due.*** The Parent must provide 30 days written notice to the School when withdrawing the Student. Due to the financial obligations of Wimberley Montessori School, no tuition payments or parts thereof will be refunded because of a Student's prolonged absences or withdrawals (except as stated above).

Important Note:

Please make your payments on time. If you are having difficulty at any time getting your payment to us, please call and speak with administration. You have a twenty-day grace period after the due date to pay your tuition. Payments received after the grace period are considered late and are subject to a late charge of \$20. If payment of tuition or fees is delinquent in excess of 20 days, the School reserves the right to refuse to admit the Student to class and to take legal action to collect the unpaid balance.

Changes in Policies or Procedures:

You will be notified of any changes to policies or procedures in writing via group email or on our website – www.wimberleymontessori.com

State Minimum Standards

State Minimum Standards can be viewed online at www.dfps.state.tx.us and the latest licensing report is on the bulletin board in the hall opposite the office.

Grievances:

If you have any questions or concerns regarding any school policies or procedures or issues regarding your child/ren's experience at Wimberley Montessori School you may discuss them with the director, Vera Dyson.

The enrollment contract included in this handbook states:

“The parent agrees that if payment of tuition or fees is delinquent in excess of 30 days, the school shall have the right to refuse to admit the student to class and to take legal action to collect the unpaid balance.”

Two Week Trial Period for New Students

Newly enrolled students will be subject to a two-week trial period. During this time, teachers and the director will determine if our environment is a good fit for the student and if the child will flourish in our environment. If the fit does not seem to be a good one, the child will be asked to discontinue attending our school.

Students Requiring Extra Supervision

On the rare occasion when an inordinate amount of time is needed to meet the needs of a student, causing an imbalance in teacher student ratio, on an ongoing basis, the following steps will be taken. 1. A meeting with the student's parents. 2. A plan to attempt to rebalance the attention needed by the student. 3. If this plan is unsuccessful, the child will be asked to leave the program.

Inclement Weather

Generally, Wimberley Montessori will follow WISD procedures. Check local TV and radio announcements for school closing information. If WISD says it will start 2 hours late Wimberley Montessori will start 2 hours later than our normal start time.

In some cases (If the weather seems very severe) Wimberley Montessori may opt to NOT follow the WISD procedures and will call in our own preference to the television stations.

Note: Wimberley Montessori is very flexible in our rules, when it comes to the safety of the children, so please use good common sense when choosing to drive on icy or potentially flooded streets or in other inclement weather.

Emergency Preparedness Plan

In extreme cases, the school, if in session, may consider closing the school in favor of seeking the safety of our homes. *If in doubt, please call the school at 512-847-6055.* Emergency numbers are posted on the school bulletin board in the main hallway. We will call 911 in case of emergency.

- If the school finds it necessary to close, efforts will be made to contact parents first and then their emergency contacts, to pick up their children.
- If the conditions are severe, all the students and staff members will be congregated in the hallway with no windows at the front of the school until all children have been picked up.
- Please keep yourselves aware of what is happening during emergency conditions so you can take appropriate action to pick up your children if you (or the school) feel it is necessary.

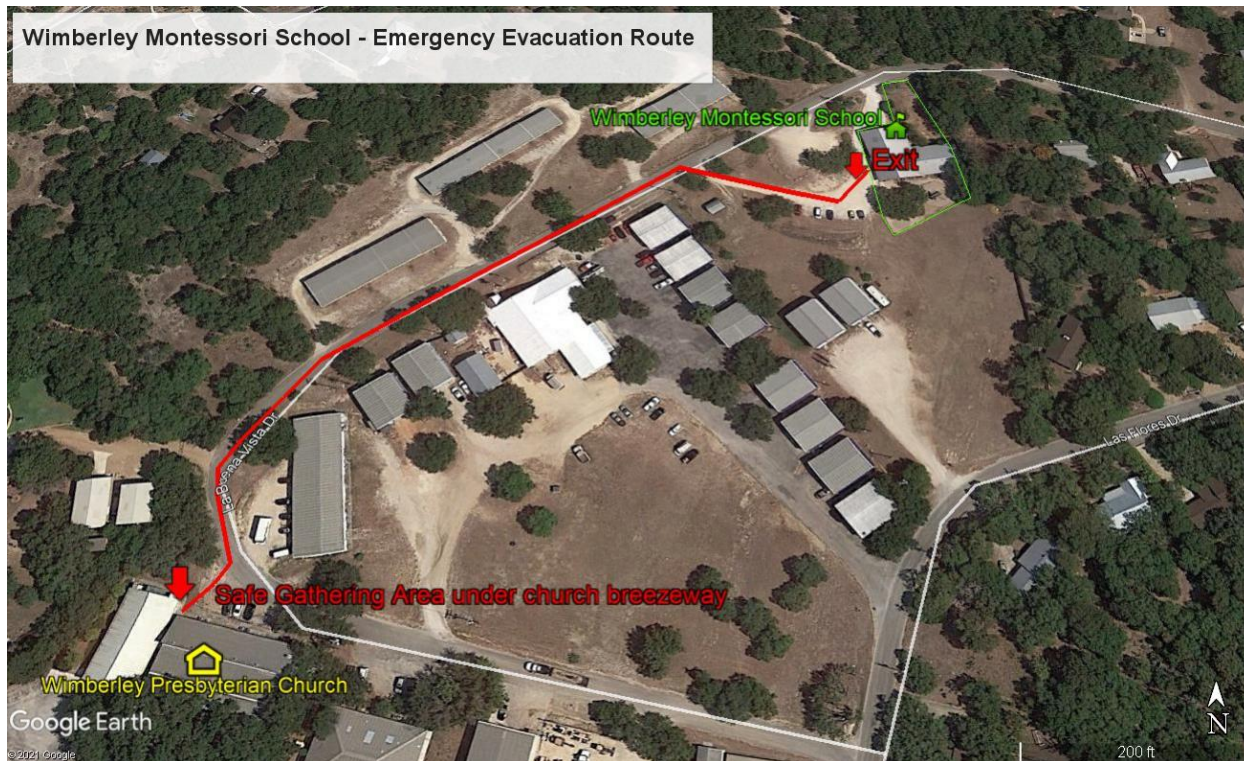
Emergency Evacuation

In the event of an emergency situation that requires the immediate evacuation of the school campus, Vera Dyson (in her absence Michelle Adams) will oversee this action. Children will be walked with the supervision of their teachers, to the Wimberley Presbyterian Church at, 956 FM2325, Wimberley.

Teachers will account for children in care by cross referencing the daily attendance log. We will call 911 to inform them of the emergency. A school directory containing emergency numbers and

authorization for care forms will be in the teacher's possession. An evacuation/relocation diagram is posted in each classroom.

Moving the children to the Wimberley Presbyterian Church would be necessary only in the most extreme emergency which would prohibit us from taking the time to call each parent before leaving the school. If such an emergency were to arise, we would continue to attempt to reach parents as well as ask the local media to broadcast information about the nature of the emergency and the exact location of the children. Children would be released to their parents or pre-approved adults only.



Gang –Free Zone

As stated in the Texas Penal Code, any area within 1000 feet of our school is a gang-free zone, where criminal offenses related to organized criminal activity are subject to harsher penalty.

Health Policy

Please do not send your child to school when any of the following symptoms are present: fever (temperature above 100.0 degrees F), rash, uncontrollable cough, excessive mucus, diarrhea, vomiting, or severe sore throat. A child exhibiting any of these symptoms during the school day will be sent home for the day. In addition, we ask that your child remain fever and vomit free for 24 hours before returning to school. If there is an outbreak of a contagious disease at school, parents will be informed by email, a note sent home, or by your child's guide.

If your child is unable to attend school, please notify the school office at 512-847-6055.

Immunizations:

Your child must be current on all required immunizations or have an Affidavit for Exemption from Immunizations for Reasons of Conscience. Go to the Texas Department of State Health Services (DSHS) website <https://dshs.texas.gov/immunize/school/default.shtm> to find a schedule of required immunizations. A request for exemption from Immunizations for Reasons of Conscience can be

obtained at the DSHS web link <https://www.dshs.texas.gov/immunize/school/pdf/EF11-13140.pdf>. Class attendance will not be allowed without either documentation of the required immunizations or an affidavit of exemption.

We currently do not require our staff to have any vaccinations. We will contact the Hays County Health Department on a regular basis to see if local conditions warrant any required vaccinations.

Vision and Hearing:

As noted on the Child's Health Record sheet included in your enrollment pack. All children must follow state requirements regarding vision and hearing testing.

Medication Policy:

We do not administer prescription medications at school.

Medical Emergencies

Staff members are trained in CPR and standard First-Aid procedures. You will be notified immediately should an emergency situation arise. **PLEASE BE SURE WE HAVE YOUR DAYTIME PHONE NUMBERS AND EMERGENCY CONTACTS** so we may contact you or someone you designate in the event of an emergency.

Lice

Head lice are a common problem in any school, and the Health Department has classified the carrying of lice as one of the conditions warranting exclusion from class until treatment has been administered. If we find it necessary to do a class or school-wide check and your child is found to have head lice, you will be notified immediately, and your child will need to be picked up and treated before returning to school. A staff member will check your child's head before re-admitting them to the classroom.

General Information Regarding Lice:

- Head lice are most commonly spread by the use of shared combs, brushes, hats, or clothing. Bed lines and furniture are also a possible source. It is best to discourage sharing of combs, brushes, hats, etc.
- The best way to eliminate lice is to treat the affected person with a shampoo specially developed to eradicate lice. Such shampoos are available both over the counter and in prescription strength. Consult your doctor or pharmacist as to the product they recommend for your child.
- Lice eggs are called nits. Most medicated shampoos include a nit comb, the use of which is very important. Nits left in the hair could hatch and cause a re-infestation.
- Your child's bed linens should be treated along with combs, brushes, caps, hats, upholstered furniture, and car interiors.
- If you have been notified that your child has lice, please be sure that he has been treated and is free of nits before returning to class.
- If you know that your child has lice, even if you have recently treated them, please contact your child's guide immediately so the other children in the class may be checked right away to prevent a major outbreak.

- Be aware that the incubation period is 7 to 10 days, and the unhatched eggs are not always killed by the treatment. Treatment must be repeated in 7 to 10 days to eliminate any newly hatched lice.
- PLEASE DO NOT TREAT YOUR CHILD UNLESS YOU ARE SURE HE HAS LICE. We will be glad to help you learn how to detect lice if you are unfamiliar with the signs and symptoms. do not want to offend anyone or dictate to parents how to resolve this problem in their homes. We are all free to choose the method of eradication we prefer. However, the problem can quickly become out of control: and, to regain control, we will, if necessary, impose a short-term ban on hats, caps, cloth headbands, hair ties, bandanas, etc.

Hand Foot and Mouth Disease

Hand, Foot, and Mouth Disease (HFMD) is common in children under 5 years old, but anyone can get it. The illness is usually not serious, but it is very contagious. It can spread quickly at schools and day care centers.

HFMD is caused by viruses. A person infected with one of these viruses is contagious, which means that they can pass the virus to other people. Symptoms usually include fever, mouth sores, and skin rash. The rash is commonly found on the hands and feet. One strain of the virus does not produce skin rash so sometimes it is difficult to diagnose.

If someone is sick with HFMD, the virus can be found in their:

- Nose and throat secretions, such as saliva, drool, or nasal mucus
- Fluid from blisters
- Feces (poop)

People with HFMD are usually most contagious during the first week that they are sick. However, people can still sometimes spread the virus to others for days or weeks after symptoms go away, or even if they have no symptoms at all.

In order to protect our students, families, and staff from the spread of this contagious disease the following procedures must be followed.

Before returning to school the child:

- Must be fever free for at least 24 hours
- Must have not formed any new blisters for 24 hours
- Must have only blisters that have scabbed over
- Must have a doctor's note stating that it is safe for the child to return to school

Wimberley Montessori School reserves the right to send home a symptomatic child despite a doctor's note if the child has a runny nose, new spots, unhealed spots and/or seems generally unwell.

Child Abuse

Child abuse and neglect can happen anywhere. Please understand that failure to report the abuse or neglect of children is a crime in the state of Texas. If you know of, or even suspect, child abuse or neglect, report it to the Department of Family and Protective Services immediately. The toll free number is 1-800-252-5400 – www.dfps.state.tx.us

Guided Tours/Observations

Guided tours/observations are scheduled after the first six weeks of school in order to give teachers and students a chance to settle into a rhythm and become comfortable in their classroom environments. Observing your child in the classroom will help you to understand their work and the education system we use. Observations are arranged by leaving a note for your child's guide requesting an appointment.

Guidelines for Observation

We have listed the following suggestions to make your visit more enjoyable and so the classroom will not be disturbed. Naturally, the children are excited by and interested in visitors. By following these guidelines, you will be able to see the classroom in as-close-to-normal conditions as possible. Come into the classroom as unobtrusively as possible.

1. When you go into the classroom, there may be children doing work on the floor. Be careful not to step on any rugs; the children use them as work areas.
2. The children may talk to you, or they may not notice that you are there.
3. If the children talk to you, respond briefly and quietly so you will not disturb the classroom.
4. Do not start a conversation or prolong one started by a child.
5. Do not expect to see all the children working all the time. Each one is different and works at their own pace.
6. Montessori classrooms are orderly, but not necessarily quiet, classrooms.
7. Some things to look for:
 - Do the children look relaxed and happy?
 - Do you see children who are interested in their work?
 - How do the children handle challenges? Are they helpful to others?
8. The guides' top priority is working with the children; please do not feel that they are being rude if they do not stop to talk with you.

Conferences

Conferences are a vital part of your child's education. They provide opportunities to meet one-on-one with your child's guide to discuss their progress and to gain a better understanding of the Montessori materials and process.

We schedule conferences twice a year, in the late fall and in the spring. It is very important that you schedule a conference and then attend that conference on time. The teachers have set that time aside especially for you and are looking forward to sharing ideas and information with you. Please call the teacher in advance if you are unable to attend your conference. If at any time during the year you would like to confer with a guide or the director, please call the office to schedule an appointment.

Parental Participation

The success of any school is dependent on parents, staff, and students working together. We depend on parents to help with field trips, school beautification days, event planning and more.

These are ways to become involved in your child's education and to demonstrate that their school experience is important to you. Studies show that parental involvement in school activities has a notably positive effect on the academic and social progress of students.

In addition to our organized collaborative efforts, we invite you to regard Wimberley Montessori as your school. When you see a sidewalk you think needs sweeping, ask for a broom. Feel free to do a little gardening while you wait for your child. Ask your child's guide if you can help dust shelves or help on the playground during playtime. Eat lunch with your child, come to their plays and performances, and attend cultural challenge for your child's classroom. Don't miss the opportunity to share in your child's school experience.

Field Trip Drivers

If you volunteer to be a driver for a field trip, please bring your proof of liability insurance and driver's license to the office to be photocopied before you pick up the children.

Discipline

The positive model of discipline within a Montessori setting is self-discipline, where concentration, focus, and independent learning happen without contention or interruption. Children are respected, and misbehavior is handled with positive approaches. Our teachers are trained to respond to misbehavior in the following ways:

The child's behavior is specifically addressed with respect and firm boundaries. Their character is never evaluated.

Opportunities are provided for the child to express and define their feelings. Active listening is an essential tool used by all teachers to validate children's feelings while clear boundaries are communicated.

The guide sets the tone for bringing the child into harmony by focusing on logical consequences rather than using harsh words or sudden reprimands.

The development of inner discipline in a child is always the goal at Wimberley Montessori, and this self-possession is fostered in various ways. The classroom environment is organized in an orderly, logical manner. Studies have shown that exterior order and peace help bring interior order and peace. One of the classroom rules is that children choose work which they are capable of doing and are free to use it as long as they wish without interference from others. This helps avoid or alleviate some discipline problems which might be present in other environments.

Within reason, behavior problems will be worked out in the classroom. If teachers are concerned about behavior in a classroom, they will notify parents immediately and schedule a conference. Parents, teachers, and child will work vigilantly together to support the child to change their behavior. There may be times when other professional resources will be requested in order to serve the child's best interests.

Suspension from school will be a last resort measure to impress upon a student the need for self-discipline and cooperative behavior. Actions that will result in the immediate suspension of a student include:

- physical violence against another student or a staff member
- willful destruction of the classroom environment or any school property

- inappropriate language or other aggressive behavior that disrupts the classroom activities

Parents are expected to respond promptly to the guide's request for a meeting when there is a problem with inappropriate behavior.

Dismissal from the school will be considered when all other attempts to work with a student have failed. In the event a student is dismissed at the school's discretion, no tuition payment or parts thereof will be refunded.

Expulsion

Wimberley Montessori School reserves the right to expel students if (but not limited to) the following situations occur:

1. Non-factual information is included in any of the paperwork submitted for admission to the school
2. The child exhibits aggressive behavior towards other students or their teachers or staff of the school.
3. A parent exhibits aggressive behavior towards any child or staff member.

Lunches

In order for our children to gain the most benefit from their school experience, we must consider their nutritional needs. Starting the day with a wholesome breakfast can help your child concentrate with clarity and purpose. Parents are ultimately responsible for appropriate nutrition of their child.

Foods that contain high quantities of sugar and chemicals can inhibit children's ability to function with accuracy and endurance. For example, children who begin their day with a sugary breakfast tend to be inattentive, aggressive, or impulsive during the morning lesson. This serves neither the child nor the classroom environment.

We encourage parents to send lunches consisting of wholesome foods such as wholegrain breads, nuts, fresh fruits and vegetables, milk, or other unprocessed foods. Candy, cookies, chocolate chip granola bars, etc. should be saved for the child to enjoy at home.

We also encourage parents to send lunches in re-usable containers such as sandwich boxes and thermos bottles. Wimberley Montessori School supports recycling and conservation of resources and strives to teach the children the importance of environmental stewardship.

Please note: Please send food that does not require heating or refrigeration or use lunch coolers or insulated lunch boxes. Please make sure lunch boxes are clearly labeled with your child's name.

Clothing

Please dress your children in clothing they can easily take off to go to the bathroom and put on again by themselves. The more things that children can do for themselves, the better they feel about themselves.

Provide comfortable clothing for the school day and be guided by the weather. In cool weather, send an outer wrap and cap. Caps are very important in cold weather, as 50% of your body heat is lost through the top of your head.

Always label all sweaters, jackets, shoes, socks, and personal belongings. Please check each day that your child leaves school with their belongings and lunch box. If your child is 20 months to 5 years old, please send an extra set of clean clothing to be kept at school for emergency situations such as illness or a bathroom accident. These clothes should be sent in a wet/dry bag and labeled with your child's name. It can happen to anyone, so please be sure and bring a clean set on the first day of school. Your child's wet clothes are sent home in the wet/dry bag.

Please send in the new set of clean clothes the very next day! If by any chance your child comes home in emergency clothes that belong to the school, return those clothes immediately, as the school needs them for other "emergencies."

Consider also the appropriateness of your child's clothing and its safety. Tennis or rubber-soled shoes are appropriate for school because they are comfortable, easy to run and play in, and do not come off easily. Flip flops are inappropriate, only sandals with straps are allowed. Please do not send your child in boots; they are awkward, and the heels hurt others easily.

Bringing Items to School

Please explain to your child that he may not bring toys to school. Frequently, such items are lost or can cause problems with the other children. Teachers will remove such items from the classroom, and they will need to be collected after school.

If your child finds an animal (or has a pet) that they would like to bring to school, talk with the teacher or have your child bring home written permission from the teacher.

Children often like to bring things from home for Show-and-Tell. Encourage items found in nature, such as a flower, plant, or seashell.

Birthdays

The celebration of your child's birthday is very important, and we want the day to be special. We request you help your child choose mementos of their life that can be shared with the class during a circle time celebration. Photos are an excellent way to represent special moments and loved ones as well as your child's development over time. Please do not send presents for your child to open at school. Please do not distribute birthday party invitations at school unless you include every child in the class. Invitations to parties that do not involve all the children must be mailed. Also, please remember that your child may not go home with other children, even for a birthday party, unless there is a note to the teacher.

Toy Days

On occasion a guide may choose to allow children to bring toys to the classroom. This is a matter of choice for each guide. Please do not allow your child to bring toys to school unless you have been notified in advance that it is a "toy day."

Pets

When there is a resident pet in the classroom, we are required to have a veterinarian's statement of good health on file. If you want to offer a pet to your child's classroom, please consider the amount of care and attention the pet may need and discuss your ideas with the guide. The decision for or against a pet in the classroom is the Guide's. If your child wants to bring a favorite pet to class for a day or two, you will need to speak directly with the guide. No dogs, cats, puppies, or kittens, please.

Holidays and Staff Development Days

Wimberley Montessori School observes the major holidays included in the calendars of most schools. In addition, we recognize less widely-known ones. While we have no religious affiliation, we encourage the children to become aware of the various cultural and religious beliefs and customs celebrated throughout the world.