

# Aaron Sappenfield, Ph.D., P.G.



**Aaron Sappenfield, Ph.D., P.G.**  
Geologist

**Ph.D. Geological Sciences**  
University of California,  
Riverside, 2015

**M.S. Geological Sciences**  
University of California,  
Riverside, 2009

**B.S. Business Administration**  
University of California,  
Riverside, 2003

## Focused Experience

- Surface and subsurface geologic investigations
- Hydrogeologic testing and characterization
- Human and ecological risk assessment
- Field- and lab-based soil, soil vapor, and groundwater testing and analysis
- Health and safety planning and implementation
- Implementation of financial control processes, including earned value analysis
- Regulatory negotiation
- Groundwater remediation

## Skills

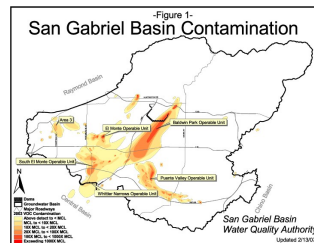
- Field- and lab-based geological and hydrological assessments supporting site characterization, risk assessment, compliance monitoring and remedial design
- Health and Safety planning and coordination
- Project management and strategic advisement for multi-party sites
- Project advocacy to agencies and public
- Resource selection, team building and management
- Project scheduling, logistics and critical path analysis
- Capital program management
- Procurement support
- Litigation support
- Geotechnical/Construction Management support

## Example Project Experience



### **BKK Landfill, West Covina, California**

Project Manager for the 540-acre Class I/Class III Landfill Facility's Engineering Evaluation/Cost Analysis (EE/CA) and Groundwater Remedial Investigation/Feasibility Study (Groundwater RI/FS) programs.



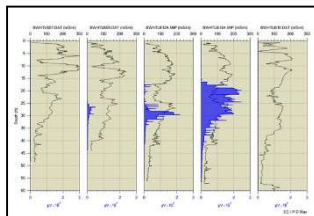
### **El Monte Operable Unit, Los Angeles County, California.**

Field Supervisor for subsurface investigation and remedy implementation. Efforts included drilling and sampling of multiple groundwater monitoring, extraction, and injection wells in commercial and residential settings.



### **La Pata Road Gap Closure, Orange County, California.**

Lead Geologist supporting construction of a 1.2-mile road section partially constructed over refuse and landslide debris. Project named among 2016's top 10 best roads by Roads & Bridges magazine and was awarded Project of the Year by ASCE (Orange County Branch).



### **Confidential Client, Southern California**

Project Manager for Site Characterization and Remediation at former chemical manufacturing facility. Project components include groundwater/soil/soil vapor sampling, screening-level human health risk assessment, plume modeling using Environmental Visualization System (EVS) software, and regulatory negotiations.



### **Santiago Canyon, Coyote Canyon, Prima Deshecha, Olinda Alpha, Frank R. Bowerman Landfills, Orange County, California.**

Project Manager for Title 27 groundwater monitoring reports. Efforts included database development and maintenance of environmental laboratory testing data, groundwater elevation measurements and contour maps, groundwater quality, statistical evaluation of landfill groundwater data.

# Aaron Sappenfield, Ph.D., P.G. (continued)



Aaron Sappenfield, Ph.D., P.G.  
Geologist



## Plant Vogtle, Augusta, Georgia.

Lead Geologist in support of installation of a river water intake structure for the Plant Vogtle Nuclear Generating Station. Project included surficial geologic mapping, trench logging, and surveying of water levels from trenches and nearby groundwater monitoring wells.



## OC Parks, Orange County, California.

Project Manager for storm susceptibility and geologic hazard evaluation and stormwater management assessment at ~20 county-operated facilities.



## Confidential Client, Southern California.

Project Manager for soil and bedrock sampling program at a southern California mining facility. Work included stormwater management planning, human health risk assessment, and developing operational recommendations in support of product liability evaluations.

## Employment History

### 2019 to 2020 (Current)

**PathForward Consulting, Associate**

Providing professional geological and environmental consulting services.

### 2018 to 2020 (Current)

**Allied Geoscience, Inc., President;**

Providing professional geological and environmental consulting services.

**Riverside City College, Assistant Professor;**

Instructor for lecture, lab, and field-based courses in Geology and Oceanography.

### 2011 to 2018

**Geosyntec Consultants, Inc., Senior Geologist;**

Surface and subsurface investigations, groundwater remediation, geological mapping and drilling, geophysical logging, well development, drilling and abandonment, soil sampling, settlement analysis and general project oversight.

## Other

California Professional Geologist No. 9458

- Sappenfield, A.D., Tarhan, L.G., Droser, M.L., 2016, Earth's oldest jellyfish strandings: A unique taphonomic window or just another day at the beach? *Geological Magazine*.
- Sappenfield, A.D., Droser, M.L., Kennedy, M.J., McKenzie, R.N., 2012, The oldest *Zoophycos* specimen to date and implications for Early Cambrian deposit feeding. *Geological Magazine*. 149, p. 1118-1123.
- Garson, D.E., Gaines, R.R., Droser, M.L., Liddel, W.D, and Sappenfield, A.D., 2012. Dynamic Palaeoredox and Exceptional Preservation in the Spence Shale (Utah, U.S.A.). *Lethaia*. 45 (2), p. 164-177.
- Sappenfield, A.D., Droser, M.L., and Gehling, J.G., 2011, Problematica , trace fossils, and tubes within the Ediacara Member (South Australia): Redefining the Ediacaran trace fossil record one tube at a time. *Journal of Paleontology*. 85 (2), p. 256-265. - **Honorable Mention: Journal Article of the Year.**