

01322 660055

OFFICE@ARCHERSTRAVEL.CO.UK



Archers

TRAVEL

— COACHES & MINIBUSES —



Day Trip Brochure

**Dartford
based
booking
office!**



May – August 2025

Southend – Windsor – Eastbourne – Oxford
Clacton – Sandwich – Margate – Cotswolds
Bournemouth & many more!



01322 660055



www.archerstravel.co.uk

Welcome to Archers Travel!

And welcome to our new day trip programme, we hope we have included day tours to suit everyone.



As you will see, this day trip programme runs until the end of August. We hope to release September onwards in the not too distant future that will include theatres, Christmas markets and shows.

We are also always open to suggestions, so please get in contact or come into the booking office to discuss where you might like to see us go in future!

We have been operating since 1985 and mainly operate private hire vehicles, but we have been operating individual day tours and holidays from the Surrey area over the last few years.

However, with our move to a new office in Dartford, we hope to build a fantastic relationship with the local community in and around the area.

Our fleet of modern, clean and stylish vehicles allow us to provide a service we are proud of and hope you will be too.

Our drivers are experienced, punctual, polite and friendly. All are enhanced DBS checked as well.

All our coaches have a toilet onboard for added comfort.

You are more than welcome to pop into our shop to view our trips mentioned in the brochure, have a chat with our friendly office staff and book your seats.

Our office on Market Place, Dartford is open:
Monday to Friday 9am–5pm
Saturday 9am–12pm

You can also call, email or submit an enquiry on our website.



Please find our day trips from 24th May to 30th August below and overleaf.

Trips can be booked by calling the office on 01322 660055, visiting our shop or via email.

We hope to have the pleasure of your custom in 2025 and beyond!

*****INTRODUCTORY TRIP OFFER*****

Saturday 24th May

Southend-on-Sea

£15 per person

Whether you've been on one of our trips before or indeed this is your first time, come to Southend on our first day trip of 2025 at a special introductory fare! See our vehicles, meet our drivers and enjoy a day out in (hopefully) sunny Southend!



Monday 26th May

Hastings or Bexhill

£25 per person

Enjoy the delights of either Hastings or Bexhill. We drop off at Hastings first with its local fish market, amusements, seaside cafes and restaurants and aquarium. We then take the remainder of our party onto Bexhill to spend the day. You can visit the De-La-Warr Pavillion, museum, vintage shops and also a range of independent cafes and restaurants.

Friday 30th May

Colchester Zoo

£25 per person (Under 14's £20 per person)

+ entrance fee payable on the day

Where the adventure begins! Colchester Zoo has won many awards for its work, with over 150 species to see, set in 60 acres of beautiful parkland and lakes.



Sunday 8th June

Windsor

£25 per person

A stunning town on the River Thames, dominated by its Castle. The town is rich in things to do and see from interesting walks, boat trips, gardens, shops and cafes which all make for a glorious day out.

Sunday 22nd June

Cotswolds Tour inc. Stratford-upon-Avon

£35 per person

After an early morning start we head to Burford, on the River Windrush, popular for both its history and beauty. We then travel onto Stratford upon Avon, the birthplace of Shakespeare, a medieval town on the banks of the River Avon. We then take a scenic tour home including the quaint villages of the Cotswolds.

Friday 27th June

Bognor or Littlehampton

£25 per person

Spend the day at either destination.

First, we drop off passengers wishing to spend the day in Bognor, with its large expanse of sandy beach, pier and long promenade. We then continue onto Littlehampton, home to a sandy and shingle beach, a bustling marina and harbour.

Sunday 29th June

Eastbourne

£25 per person



A popular seaside resort with a 19th century pier and 1930's bandstand, splendid Victorian architecture, seafront gardens and plenty of cafés, tea rooms, ice cream parlours and restaurants to choose from.

Wednesday 2nd July

Macknade Food Hall & Canterbury Market

£25 per person

Set on the outskirts of Faversham, the food court and café is a food lovers paradise, featuring a range of incredible produce sourced from local Kentish doorstep and further afield. After a couple of hours here we travel into Canterbury, a cathedral city offering a blend of history and culture. The market is on every Wednesday with traders offering a range of clothing, food and gifts.

Sunday 6th July

Hampton Court Flower Show

£25 per person + entrance fee payable on the day

A pinnacle of horticultural excellence with something for everyone. This features the world's largest flower exhibition, amazing garden displays and exclusive shopping.

The entrance fee of £30.85 is payable on the day or you can pre book through RHS Hampton court.

Saturday 12th July

Suffolk Coastal Tour inc. Dunwich & Thorness

£25 per person

A chance to explore the stunning heritage coastline which runs from Felixstowe to Lowestoft, stopping off at Dunwich and Thorness a seaside village nestled between the Suffolk coast and heaths.

Friday 18th July

Kennet Horse Drawn Canal Cruise inc. Tea & Cake

£55 per person

We travel to Hungerford where you will have time to stretch your legs and get some lunch before we head to the Kennet and Avon Canal, where you will board a horse drawn barge for a relaxing cruise enjoying the scenery whilst having a cup of tea and cake.



Wednesday 23rd July
Oxford on Market Day
 £25 per person

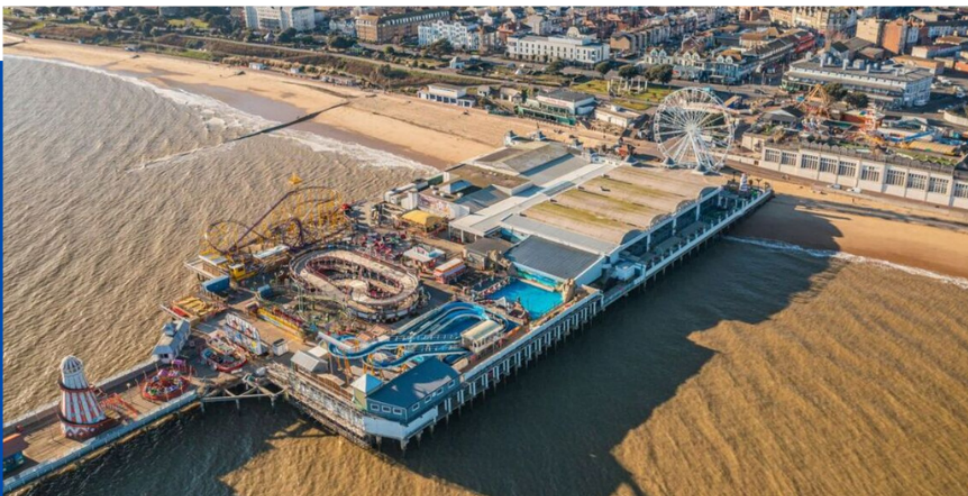
A city that revolves around its prestigious University offering a rich blend of history and stunning buildings. The market is a mix of artisan produce, cafes, gifts and fashion.

Wednesday 30th July

Whitstable

£25 per person

A unique combination of coastal charm rich in history, a vibrant food scene (particularly sea food) including its worlds renowned oysters. It boasts a castle and gardens, a museum and gallery, harbour market as well as a stunning beach.



Friday 1st August
Clacton-on-Sea
 £25 per person

A seaside resort in the county of Essex, a classic British seaside town including its Victorian pier, seafront gardens and sandy beach.

Monday 4th August

Dymchurch

£25 per person



A popular seaside town for all ages, with a miniature railway, amusements and mostly sandy beach.

Thursday 7th August

Sandwich & Walmer Castle

£25 per person + entrance fee payable on the day

We visit Walmer Castle first, an artillery fort originally constructed by Henry VIII set in over 8 acres of award-winning gardens. Explore the private rooms where the Queen Mother used to visit and the atmospheric Wellington Rooms where the Duke of Wellington lived for over 23 years and still looks like it did when he lived there. We then travel into Sandwich near Dover for the rest of our day.

Sunday 10th August

Brighton

£25 per person



A vibrant and trendy coast with a diverse cultural scene, a Royal Pavilion and Pier. Brighton offers a relaxed blend of beach charm and urban amenities.

Wednesday 13th August
Margate/Broadstairs/Ramsgate
£25 per person

Spend the day at either one of these coastal resorts. All offering a great day out. Margate with its Dreamland Funfair, Broadstairs for a more relaxed atmosphere and Ramsgate with its bustling harbour.

Saturday 16th August
Eastbourne Air Show
£25 per person



An amazing International Airshow with a variety of flying displays, helicopters and freefall parachutists, a Military exhibition area and an events arena.

Thursday 21st August
Sudbury Market and Lavenham
£35 per person

The market in the centre of Sudbury has lots of quaint stalls that have been thriving for centuries. We then take a scenic drive to Lavenham with well preserved medieval architecture, including over 300 listed buildings. A great place to soak up the history of this town whilst enjoying independent shops and cafes.

Sunday 24th August

Bournemouth

£30 per person

Boasting ten miles of award winning golden sandy beaches. Bournemouth is an ideal location to enjoy a variety of activities including amusement arcades, beach to shore zip wire, mini golf play parks, beach huts and The Bournemouth Oceanarium.

Friday 29th August

Drusillas Farm Park, Alfriston

£25 per person + entrance fee payable on the day

Widely regarded as the best small zoo in the country. It is on a small ten-acre site and is ideal for younger children with both domesticated and wild animals, hands on activities, indoor soft play area and a safari express train.



Saturday 30th August

Chessington World of Adventures

£25 per person + entrance fee payable on the day

Britain's wildest adventure!

The ultimate destination for a zoo day out with amusements and theme park, an aquarium and plenty of food outlets.

ROUTE A

Nuxley Village – Welling – Bexleyheath – Crayford
Dartford Home Gardens – Temple Hill

ROUTE B

Eltham – New Eltham – Sidcup – Swanley
Orpington Cotmandene – Orpington Spur Road
Green Street Green The Crescent

(Pickups typically start at first stop at 9.00am although subject to change)

Pickup Points

Terms & Conditions

- On return journeys 15 minutes only will be allowed for passengers arriving late at the departure point.
- We reserve the right to cancel any tour with 15 or less passengers
- The company will not be responsible for any delays in journeys which is beyond our control and no guarantee is given to arrive at any point at a given time, but every effort will be made to do so.
- The company cannot be held responsible for loss or damage to any article.
- If you wish to cancel a booking a full refund will be given if the cancellation is made at least 2 days prior to the tour date. Cancellations after this time – no refund will be given.



01322 660055



3 Market Place, Dartford, DA1 1EX