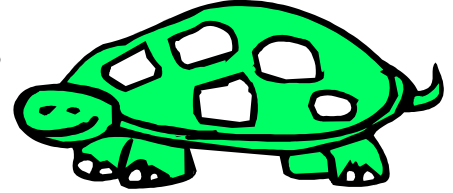


# Summarizing

Name \_\_\_\_\_

Read the attached article from National Geographic. What is the main idea?

Review the story and list 3 or 4 main details.



★	
★	
★	
★	

Now write a summary of the story (on a separate piece of paper). Look at the scoring rubric for ideas.

## Scoring Rubric

	<b>Advanced (4)</b>	<b>Proficient (3)</b>	<b>Partially Proficient (2)</b>	<b>Unsatisfactory (1)</b>
Organization	Includes a topic sentence and a closing sentence that suggests the main idea of the story.	Includes a relevant topic sentence.	There is no topic sentence.	
Detail	Describes <b>3 or more</b> important details from the article.	Describes <b>2 important</b> details.	<b>Too few, too many</b> and/or <b>irrelevant details</b>	<b>Very few</b> details
Sentence Structure	<b>Sentences flow</b> with a nice rhythm - easy to read. Transitional words are used effectively.	<b>Sentence structure is adequate</b> - does not interfere with meaning.	Sentence structure interferes with meaning.	Sentences have <b>no rhythm</b> .
Conventions	There are <b>no</b> mistakes with <b>capitalization</b> or <b>end punctuation</b> (periods, etc.) Common words spelled correctly.	There are <b>few</b> mistakes with <b>capitalization</b> and <b>end punctuation</b> . Most common words spelled correctly.	There are <b>many</b> mistakes with <b>capitalization</b> and <b>end punctuation</b> and they interfere with meaning. Many common words are spelled wrong.	<b>Capitalization</b> and <b>end punctuation</b> are <b>not used</b> .

# Board Game



Game Designer's Name: \_\_\_\_\_

	<b>Advanced (4)</b>	<b>Proficient (3)</b>	<b>Partially Proficient (2)</b>	<b>Unsatisfactory (1)</b>
<b>Instructions</b>	Instructions are clear and grammar is correct.	Instructions are clear.	Instructions are confusing.	No instructions
<b>Appearance</b>	Words are very neat or typed. Pictures look great - lots of color.	Most words look nice. Pictures are detailed and include more than one color.	Most words and pictures are sloppy.	Can not read words. No pictures.
<b>Design</b>	Includes 15 or more spaces and something always happens when you land on one.	Includes at least 12 spaces and something usually happens when you land on one.	Includes at least 12 spaces.	Fewer than 12 spaces.
<b>Educational Value</b>	Includes 15 or more game cards with questions that reference important details and vocabulary from the book(s).	Includes 10 or more game cards with questions that reference important details from the book(s).	Includes 10 or more game cards with questions.	Does not include game cards.
<b>Entertainment Value</b>	Lots of fun - would like to play again.	It was fun, but I don't really want to play again.	Not very much fun.	

My Name: \_\_\_\_\_

Topic: \_\_\_\_\_

## My Assessment:

	<b>Advanced (4)</b>	<b>Proficient (3)</b>	<b>Partially Proficient (2)</b>	<b>Unsatisfactory (1)</b>
Organization	Includes an <b>opening paragraph</b> that clearly expresses an opinion, a <b>paragraph for each key point</b> , and a <b>concluding paragraph</b> .	Includes <b>three paragraphs</b> ; an introduction that expresses an opinion, a paragraph that explains the key points, and a concluding paragraph.	Includes an <b>opening sentence</b> that expresses an opinion. Opinion is supported with <b>1 or 2 key points</b> .	
Detail	Clearly explains <b>3 or more key points</b> that support the opinion. The explanations include facts and effective elaboration.	Clearly explains <b>3 or more key points</b> that support the opinion.	<b>Too few, too many, unclear, and/or irrelevant details</b>	<b>Very few details</b>
Sentence Structure	<b>Sentences flow</b> with a nice rhythm - easy to read. Transitional words are used effectively.	<b>Sentence structure is adequate</b> - does not interfere with meaning.	Sentence structure interferes with meaning.	Sentences have <b>no rhythm</b> .
Conventions	There are <b>no</b> mistakes with <b>capitalization</b> or <b>end punctuation</b> (periods, etc.) Common words spelled correctly.	There are <b>few</b> mistakes with <b>capitalization</b> and <b>end punctuation</b> . Most common words spelled correctly.	There are <b>many</b> mistakes with <b>capitalization</b> and <b>end punctuation</b> and they interfere with meaning. Many common words are spelled wrong.	<b>Capitalization</b> and <b>end punctuation</b> are not used.

## Ms. Hebert's Assessment:

	<b>Advanced (4)</b>	<b>Proficient (3)</b>	<b>Partially Proficient (2)</b>	<b>Unsatisfactory (1)</b>
Organization	Includes an <b>opening paragraph</b> that clearly expresses an opinion, a <b>paragraph for each key point</b> , and a <b>concluding paragraph</b> .	Includes <b>three paragraphs</b> ; an introduction that expresses an opinion, a paragraph that explains the key points, and a concluding paragraph.	Includes an <b>opening sentence</b> that expresses an opinion. Opinion is supported with <b>1 or 2 key points</b> .	
Detail	Clearly explains <b>3 or more key points</b> that support the opinion. The explanations include facts and effective elaboration.	Clearly explains <b>3 or more key points</b> that support the opinion.	<b>Too few, too many, unclear, and/or irrelevant details</b>	<b>Very few details</b>
Sentence Structure	<b>Sentences flow</b> with a nice rhythm - easy to read. Transitional words are used effectively.	<b>Sentence structure is adequate</b> - does not interfere with meaning.	Sentence structure interferes with meaning.	Sentences have <b>no rhythm</b> .
Conventions	There are <b>no</b> mistakes with <b>capitalization</b> or <b>end punctuation</b> (periods, etc.) Common words spelled correctly.	There are <b>few</b> mistakes with <b>capitalization</b> and <b>end punctuation</b> . Most common words spelled correctly.	There are <b>many</b> mistakes with <b>capitalization</b> and <b>end punctuation</b> and they interfere with meaning. Many common words are spelled wrong.	<b>Capitalization</b> and <b>end punctuation</b> are not used.

## Rubric for Math Constructed Response

### Advanced

- Correct answer contained in topic sentence
- Clear explanation of answer; including accurate references to the graph and key
- Logical organization
- Correct grammar and punctuation

### Proficient

- Correct answer contained in paragraph
- Explanation of answer references the graph and key, but may be unclear or partially incorrect.
- Generally well organized.
- Grammar and punctuation are mostly correct.

### Partially Proficient

- Incorrect answer, but includes explanation with some correct information from the graph and/or key **OR** correct answer with no explanation
- Some organization is evident
- Grammar and punctuation frequently incorrect

### Unsatisfactory

- Incorrect answer with no explanation or inaccurate explanation
- Organization not evident
- Grammar and punctuation incorrect or not used

## Rubric for Math Constructed Response

### Advanced

- Correct answer contained in topic sentence
- Clear explanation of answer; including accurate references to the graph and key
- Logical organization
- Correct grammar and punctuation

### Proficient

- Correct answer contained in paragraph
- Explanation of answer references the graph and key, but may be unclear or partially incorrect.
- Generally well organized.
- Grammar and punctuation are mostly correct.

### Partially Proficient

- Incorrect answer, but includes explanation with some correct information from the graph and/or key **OR** correct answer with no explanation
- Some organization is evident
- Grammar and punctuation frequently incorrect

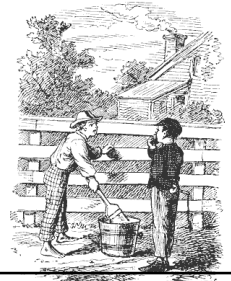
### Unsatisfactory

- Incorrect answer with no explanation or inaccurate explanation
- Organization not evident
- Grammar and punctuation incorrect or not used

# SUMMARIZING FICTION

Name \_\_\_\_\_

Title of Story \_\_\_\_\_



	<b>Advanced (4)</b>	<b>Proficient (3)</b>	<b>Partially Proficient (2)</b>	<b>Unsatisfactory (1)</b>
Organization	<b>Engages</b> the reader with an inviting topic sentence. Includes the name of the story and describes the main problem.	Includes a topic sentence. Describes the main problem.	There is no topic sentence.	
Detail	Clearly describes at least <b>3 main events</b> . Effectively uses <b>transitional words and phrases</b> .	Describes <b>2 or 3 main events</b> .	<b>Too few, too many and/or irrelevant details</b>	No details
Sentence Structure	<b>Sentences flow</b> with a nice rhythm - easy to read.	<b>Sentence structure is adequate</b> - does not interfere with meaning.	Sentence structure is weak - interferes with meaning.	Sentences have <b>no rhythm</b> .
Conventions	There are <b>no</b> mistakes with <b>capitalization</b> or <b>end punctuation</b> (periods, etc.) Common words spelled correctly.	There are <b>few</b> mistakes with <b>capitalization</b> and <b>end punctuation</b> . Most common words spelled correctly.	There are <b>many</b> mistakes with <b>capitalization</b> and <b>end punctuation</b> and they interfere with meaning. Many common words are spelled wrong.	<b>Capitalization</b> and <b>end punctuation</b> are <b>not used</b> .