

CERTIFICATE OF ANALYSIS

PRODUCT INFORMATION

Product Name: Whole Plant Normalized Concentrate
Description: Whole Plant Derived Concentrate in MCT
Mfg Process: Cold Ethanol Extraction
Mfg Date: 15-Feb-19
Retest Date: 1-Feb-20

Product Batch ID: NC01G1218C1-50B01
Product Code: NC02
Biomass Source: Goat Ridge Hemp
Biomass Lot ID: BL01G1218C1
Cultivar(s): Ceiba

PRODUCT COMPOSITION

	Material	Supplier	SKU	Lot
1	All Natural Fractured Coconut Oil	Bulk Apothecary	67859	6709003
2	Whole Finished Concentrate	Northeast Processing	FC	FC01G1218C1

MFG MATERIALS

	Material	Supplier	SKU	Lot
1	Ethanol	Ricca	RS0E0010	6709003
2	Ethanol (Denatured)	Chemisphere	B1792DR55	244401

PRODUCT DATA

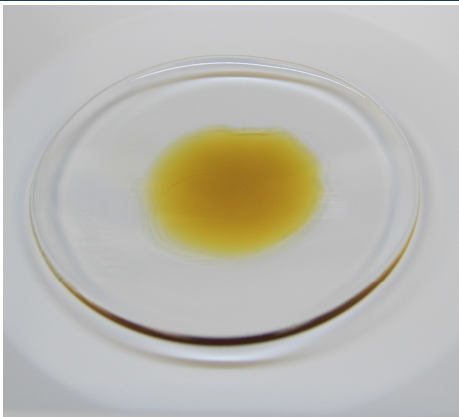
Quality	Procedure	Acceptance Criteria	Result	Report ID
Appearance (20 - 25°C)	ASTM E1627 - 11	Dark Amber, viscous liquid	PASS	n/a
Odor (20 - 25°C)	ASTM E1627 - 11	Floral, earthy	PASS	n/a
Water Activity (25°C)	D8196-18	< 0.2 Aw	0.153	n/a
Total Cannabidiol (CBD)	CERF-5210 (Internal)	46.5 - 53.5 mg/mL	50.91	NEP-R0319-002
Cannabidiolic Acid (CBDA)	CERF-5210 (Internal)	< 0.05 % w/w	Not Detected	NEP-R0319-002
Δ9-Tetrahydrocannabinol (THC)	CERF-5210 (Internal)	≤ 0.3% W/W	0.3	NEP-R0319-002
Δ9-Tetrahydrocannabinolic Acid A (THCAA)	CERF-5210 (Internal)	< 0.05 % w/w	Not Detected	NEP-R0319-002

PRODUCT STABILITY

Recommended Storage: 20-25 ° C (68-77° F), refrigerate for long term storage (> 3 months).
 Avoid exposure to extreme hot or cold and protect from exposure to light.

Shelf life of this product is influenced by many conditions of which temperature, exposure to light / air and general good storage practices are the major factors. Commercial expiration date is subjective and should be controlled by QC/QA developed for the products target application. Our suggested "Re-test" date shown on this certificate reflects a minimum period in which we would expect product to remain in good usable conditions if stored as recommended. Thereafter its continued shelf life may be very much longer and we advise re-test at the indicated date and then every 3-6 months up to a suggested commercial expiration date. Typical indicators of re-test failure would be changes in organoleptic properties (colour / sediment/off odour, etc) and >10% decrease in CBD concentration. Such changes may be gradual and slight and the commercial expiry date is intended to reflect a viable maximum proposal subject to earlier re-test approvals. NOTE: This material is derived from a botanical source that underwent minimal processing to preserve whole plant characteristics. It is recommended to mixed material thoroughly prior to performing transfers and although

PRODUCT IMAGE



Approved by:

Keith Griswold M.S.
Name: Keith Griswold, M.S.

Date: March 1, 2019
Title: Director of Analytics & Formulations