



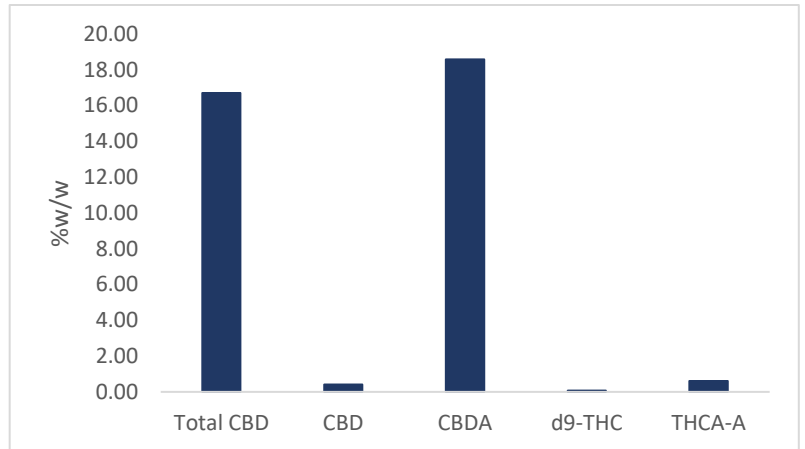
# Certificate of Analysis

<b>Client</b>	Goat Ridge Hemp	
<b>Contact</b>	Andy Dodge	
<b>Email:</b>	<a href="mailto:andydodge87@yahoo.com">andydodge87@yahoo.com</a>	
<b>Sample Name</b>	Elektra	
<b>Sample Type</b>	Dried Biomass	
<b>Intake Date</b>	30-Oct-19	
<b>Sample ID</b>	ES-191034DB	

<b>Approved By:</b>	Keith Griswold, M.S.	<b>Signature:</b>	<b>Date:</b>
<b>Title:</b>	Analytics & Formulations Dir.		10-Dec-2019

<b>Method:</b>	Cannabinoids-Limited Screen by HPLC-UV	<b>Analyst:</b>	<b>Analysis Date:</b>
<b>Method ID:</b>	NEP-CERF-5210 (internal)	KT	1-Nov-2019

	%W/W
<b>Total CBD</b>	16.71
<b>CBD</b>	0.41
<b>CBDA</b>	18.59
<b>d9-THC</b>	0.07
<b>THCA-A</b>	0.60



\*Total CBD/THC calculated using the molar ratio constant 0.877; results reported on a "dry basis."

<b>Method:</b>	Water Activity/Moisture Content	<b>Analyst:</b>	<b>Analysis Date:</b>
<b>Method ID:</b>	ASTM D8196-18	KT	1-Nov-2019

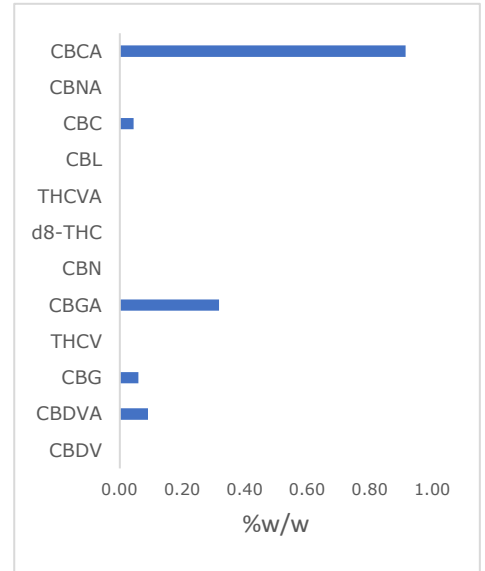
<b>Water Activity</b>	<b>0.524</b>	<b>Aw</b>
<b>Moisture Content</b>	<b>10.8</b>	<b>%</b>

<b>Comments:</b>	N/A
------------------	-----

<b>Testing Info:</b>	All testing is performed by either industry accepted methodology or internal methodology developed, validated and controlled under AOAC and ICH guidelines. Northeast Analytics is a participant in second party sponsored proficiency testing and is currently in the processing of receiving ISO/IEC 17025/2017 accreditation. Please direct any inquiries regarding results in this report for additional testing capabilities to <a href="mailto:analytics@northeastprocessing.com">analytics@northeastprocessing.com</a> .
----------------------	---

# Certificate of Analysis

Method:	Cannabinoids-Full Screen by LCMS	Analyst:	KG	Analysis Date:	2-Oct-2019
Method ID:	NEP-CERF-7414 (internal)				
Cannabinoid	%W/W	MG/G			
CBDV	<0.01	< 0.1			
CBDVA	0.09	0.91			
CBG	0.06	0.60			
THCV	<0.01	< 0.1			
CBGA	0.32	3.18			
CBN	<0.01	< 0.1			
d8-THC	<0.01	< 0.1			
THCVA	<0.01	< 0.1			
CBL	<0.01	< 0.1			
CBC	0.05	0.45			
CBNA	<0.01	< 0.1			
CBCA	0.92	9.15			
<b>Total Minor Cannbinoids</b>	<b>1.43</b>	<b>%w/w</b>			



Method:	Heavy Metals by ICP-MS	Analyst:		Analysis Date:	Pending
Report ID:	TBD				
Heavy Metal	Symbol	Units	Action Limit	Result	
Arsenic	As	ppb	200		Pending
Cadmium	Cd	ppb	200		Pending
Mercury	Hg	ppb	100		Pending
Lead	Pb	ppb	500		Pending

Reporting limit is 0.1 ppb; results reported on a dry basis; MRL - maximum residual limit allowed by Oregon State Regulations

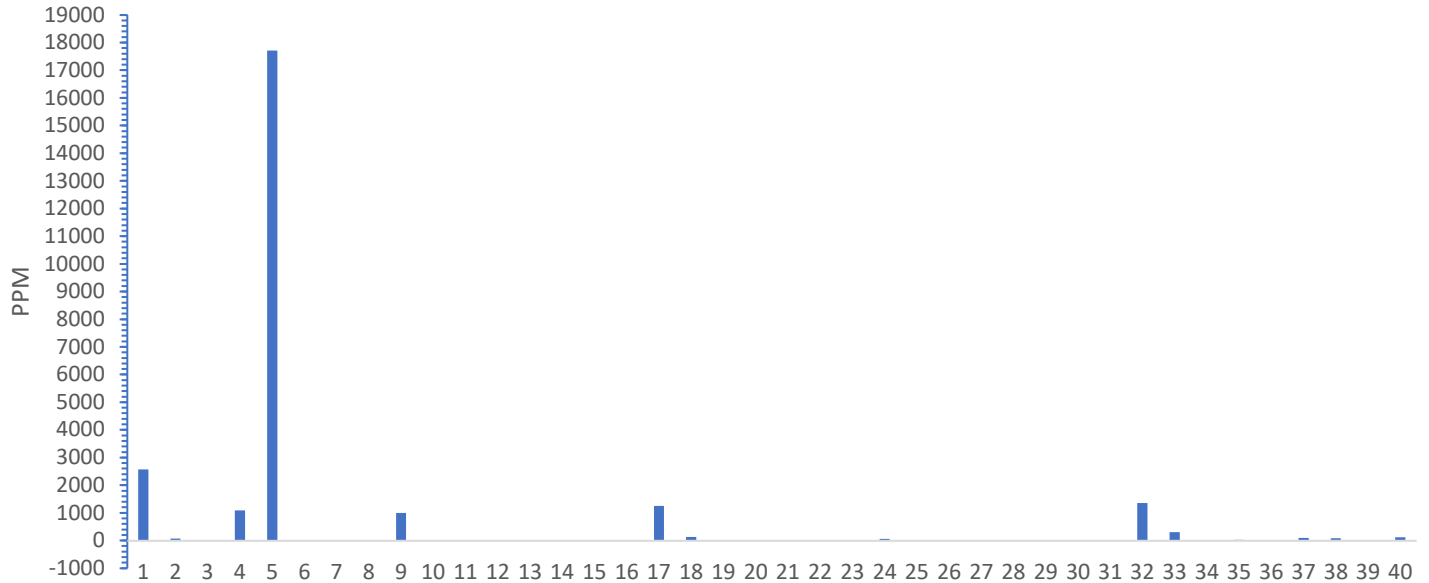
Method:	Pesticides by LCMSMS	Analyst:	KG	Analysis Date:	15-Nov-2019
Method ID:	AOAC 2007.01				
Pesticide	Units	Reporting Limit	MRL	Results	Status
Bifenazate	ppm	0.1	0.2	Non Detect	PASS
Bifenthrin	ppm	0.05	0.05	Non Detect	PASS
Baythroid (Cyfluthrin)	ppm	0.05	1	Non Detect	PASS
Etoxale	ppm	0.05	0.2	Non Detect	PASS
Imazalil	ppm	0.05	0.2	Non Detect	PASS
Imidacloprid	ppm	0.05	0.4	Non Detect	PASS
Systhane (Myclobutanil)	ppm	0.05	0.2	Non Detect	PASS
Spiromesifen	ppm	0.05	0.2	Non Detect	PASS
Trifloxystrobin	ppm	0.05	0.2	Non Detect	PASS

Reporting limit for all mycotoxins screened is 2 parts per billion (ppb); MRL - maximum residual limit allowed by EPA/Orgeon Regulations

# Certificate of Analysis

<b>Method:</b>	Terpen Profile by HS-GCMS	<b>Analyst:</b>	<b>Analysis Date:</b>
<b>Method ID:</b>	NEP-CERF-5933 (internal)	ML	4-Oct-2019

## Terpene Profile



Analyte	PPM	Analyte	PPM		
1	a-Pinene	2570	21	Isoborneol	< 2
2	Camphene	69	22	Menthol	< 2
3	Sabinene-	< 2	23	endo-Borneol	19
4	b-Pinene	1095	24	a-Terpineol	56
5	b-Myrcene	17706	25	g Terpineol	< 2
6	.a-Phellandrene	10	26	Nerol	< 2
7	Carene	< 2	27	Pulegone	< 2
8	a-Terpinene	7	28	Geraniol	< 2
9	D-Limonene	1000	29	Geranyl acetate	< 2
10	o-Cymene	-9	30	a-Cedrene	< 2
11	Eucalyptol	2	31	(E)-b-Famesene	< 2
12	b-Ocimene	< 2	32	Caryophyllene	1352
13	gTerpinene	< 2	33	a-Humulene	308
14	Terpinolene	17	34	trans-Neradiol	< 2
15	Sabinene Hydrate	< 2	35	cis-Neradiol	25
16	Fenchone	< 2	36	Valencene	< 2
17	Linalool	1253	37	Guaiol	92
18	Fenchol	129	38	Caryophyllene Oxide	83
19	Isopulegol	< 2	39	Cedrol	< 2
20	Camphor	< 2	40	a-Bisabolol	121

\*Reporting limit is 2 parts per million; results reported on a dry basis.

Total 25905  
Total in %W/W 2.59